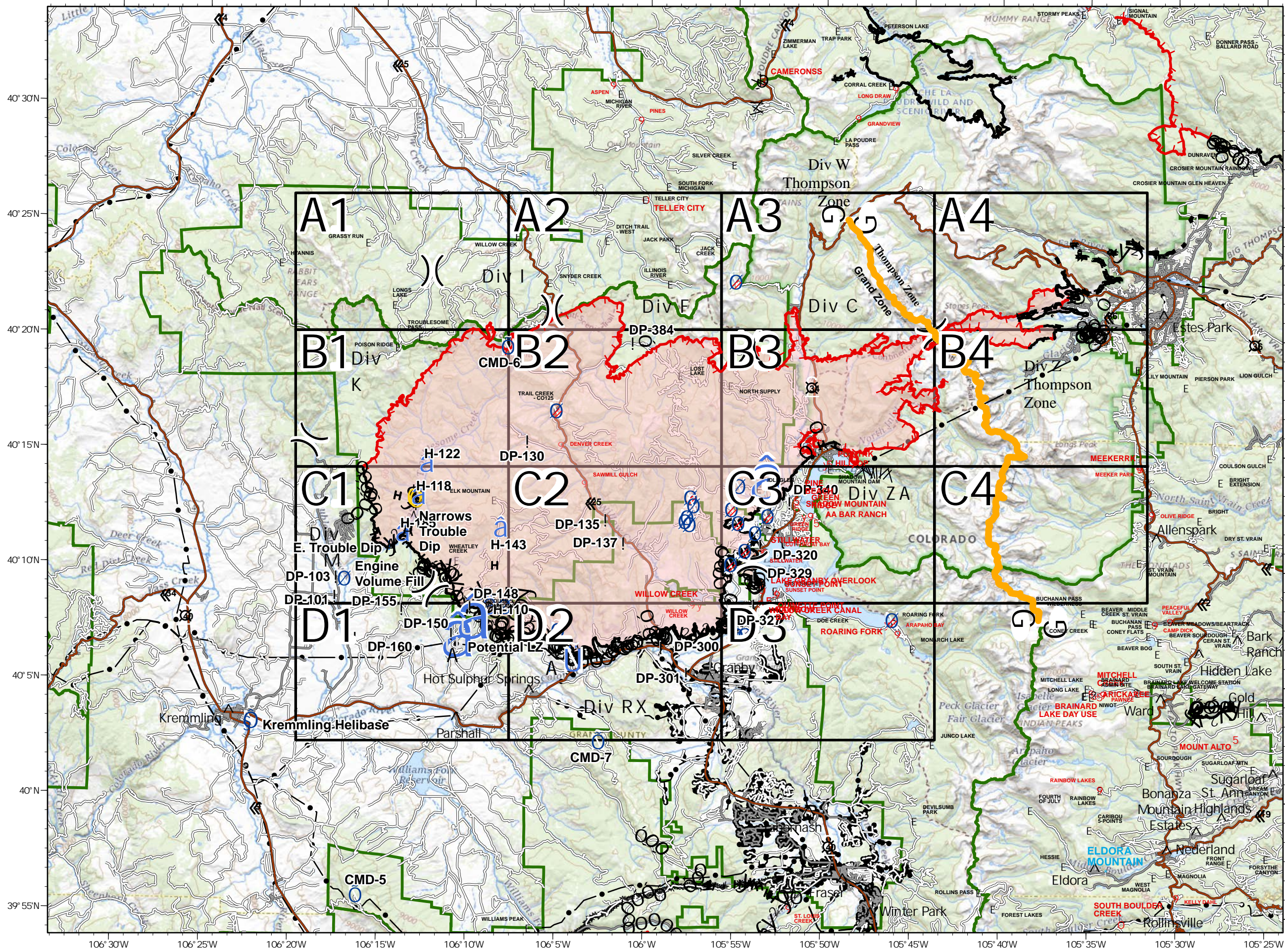
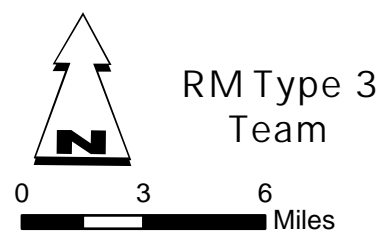


EAST TROUBLESOME - GRAND ZONE WY-MRF-000408

Fire Perimeter as of 10/31/20 2145 hrs
193,804 Total Acres
188,915 Grand Zone
4,889 Thompson Zone

- A Dip Site
 - ! Drop Point
 - ⊕ Helibase
 - ⊕ Unimproved Landing Area
 - ⊕ Helispot
 - ⊕ Repeater
 - ⊕ Safety Zone
 - ⊕ Staging Area
 - ⊕ Water Source
 - ⊕ Restricted Water Source
 - ⊕ Zone Break
 - G () Division Break
 - Uncontrolled Fire Edge
 - Contained Line
 - Completed Dozer Line
 - Completed Hand Line
 - Road as Completed Line
 - Line Break Completed
 - Fire Break Planned or Incomplete
 - Planned Fire Line
 - Fire Perimeter
- SITE_TYPE
- ? INFO SITE/FEE STATION
 - 9 CAMPGROUND
 - : GROUP CAMPGROUND
 - E TRAILHEAD
 - 5 PICNIC SITE
 - 5 GROUP PICNIC SITE
 - y BOATING SITE
 - o INTERPRETIVE SITE: INTERPRETIVE SITE (ADMN)
 - * SKI AREA ALPINE
- Forest Powerline Data
- PubServCo_CLC411113
 - MtnPrksElectricInc
- Utilities
- Power Lines
 - Gas Line
 - Zone Break



106° 30'W 106° 25'W 106° 20'W 106° 15'W 106° 10'W 106° 5'W 106° W 105° 55'W 105° 50'W 105° 45'W 105° 40'W 105° 35'W 105° 30'W 105° 25'W

40° 30'N 40° 25'N 40° 20'N 40° 15'N 40° 10'N 40° 5'N 40° N 39° 55'N

- ! Drop Point
- Repeater
- ⊗ Restricted Water Source
-) (Division Break
- Uncontrolled Fire Edge
- Completed Dozer Line
- Fire Perimeter

- Forest Powerline Data
- PubServCo_CLC411113
 - MtnPrksElectricInc

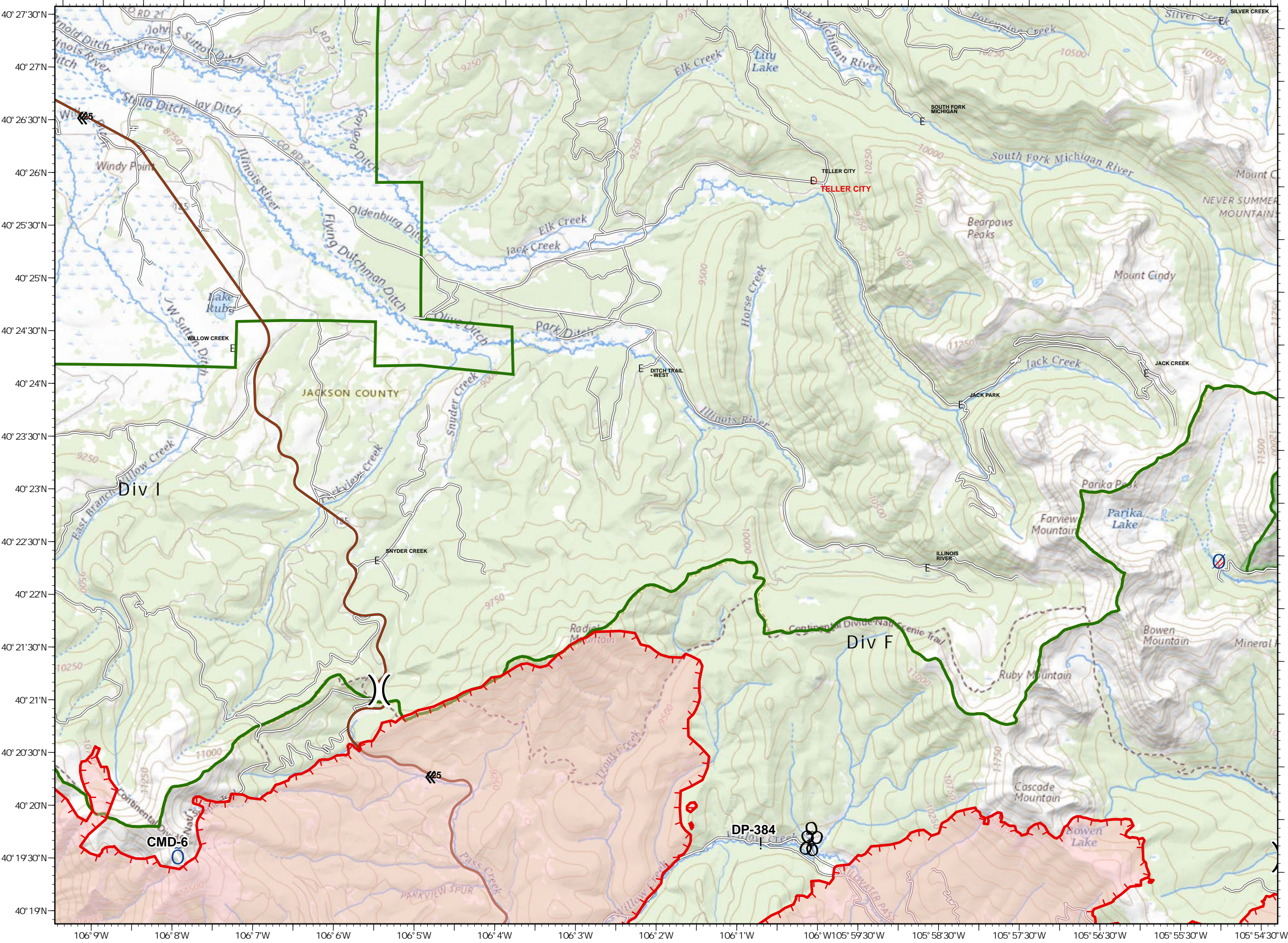
- Utilities
- Power Lines
 - × Gas Line
 - Res. Structures
 - Structures Centroids
 - Structure Footprints
 - Zone Break

Fire Perimeter as of 10/31/20 2145 hrs
 193,804 Total Acres
 188,915 Grand Zone
 4,889 Thompson Zone

Q RM Type 3 Team



A1	A2	A3	A4
B1	B2	B3	B4
C1	C2	C3	C4
D1	D2	D3	



40° 27' 30" N
 40° 27' N
 40° 26' 30" N
 40° 26' N
 40° 25' 30" N
 40° 25' N
 40° 24' 30" N
 40° 24' N
 40° 23' 30" N
 40° 23' N
 40° 22' 30" N
 40° 22' N
 40° 21' 30" N
 40° 21' N
 40° 20' 30" N
 40° 20' N
 40° 19' 30" N
 40° 19' N

106° 9' W
 106° 8' W
 106° 7' W
 106° 6' W
 106° 5' W
 106° 4' W
 106° 3' W
 106° 2' W
 106° 1' W
 105° 59' 30" W
 105° 58' 30" W
 105° 57' 30" W
 105° 56' 30" W
 105° 55' 30" W
 105° 54' 30" W

EAST TROUBLESOME - GRAND ZONE

WY-MRF-000408

11/04/2020

- Restricted Water Source
- Zone Break
- Division Break

- Uncontrolled Fire Edge
- Fire Perimeter

Forest Powerline Data

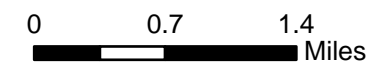
- PubServCo_CLC411113
- MtnPrksElectricInc

Utilities

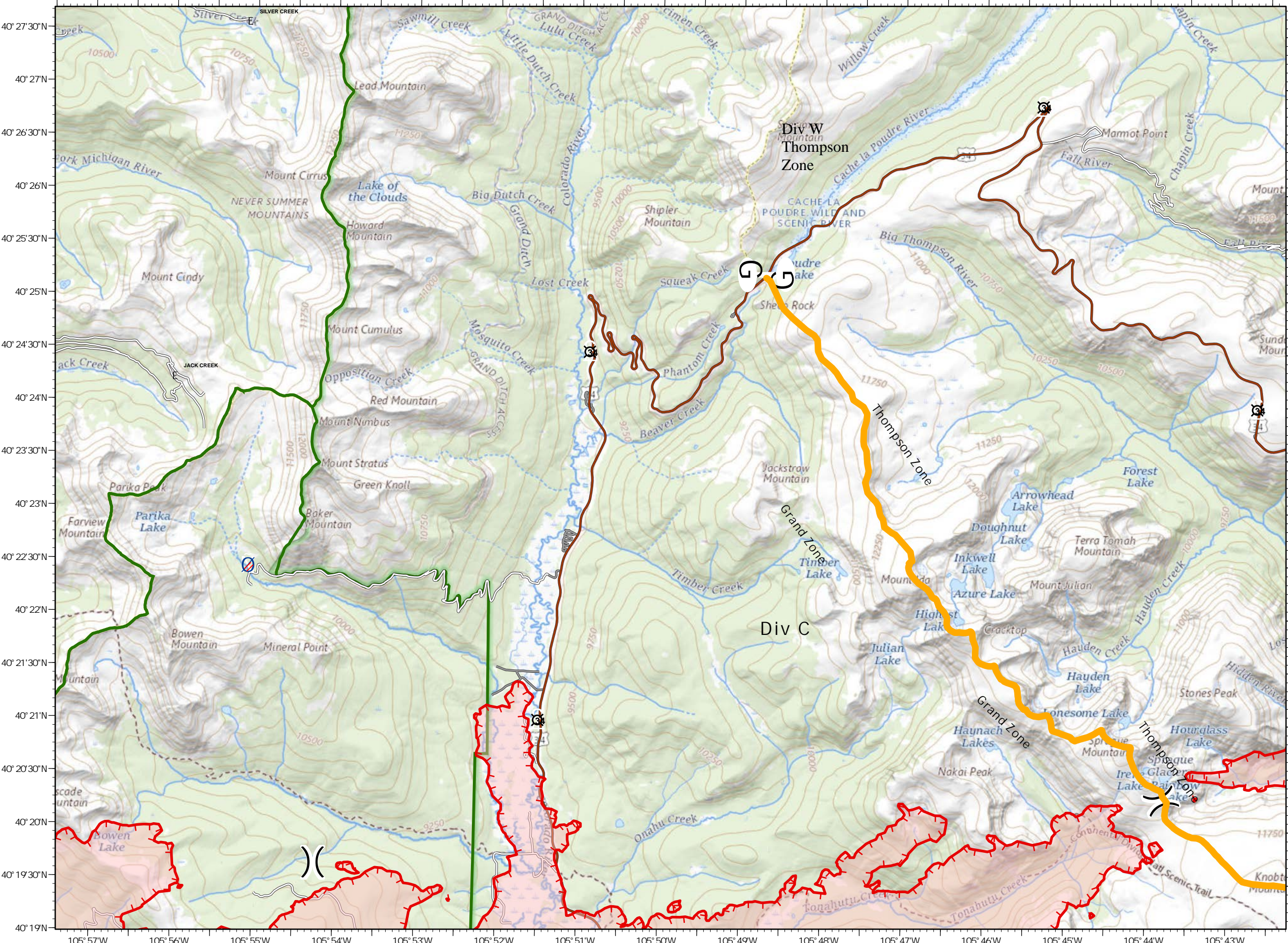
- Power Lines
- Gas Line
- Res. Structures
- Structures Centroids
- Structure Footprints
- Zone Break

Fire Perimeter as of 10/31/20 2145 hrs
 193,804 Total Acres
 188,915 Grand Zone
 4,889 Thompson Zone

RM Type 3 Team



Div I	A1	A2	A3	A4
Div J	B1	B2	B3	B4
Div K	C1	C2	C3	C4
Div L	D1	D2	D3	



EAST TROUBLESOME - GRAND ZONE

WY-MRF-000408

11/04/2020

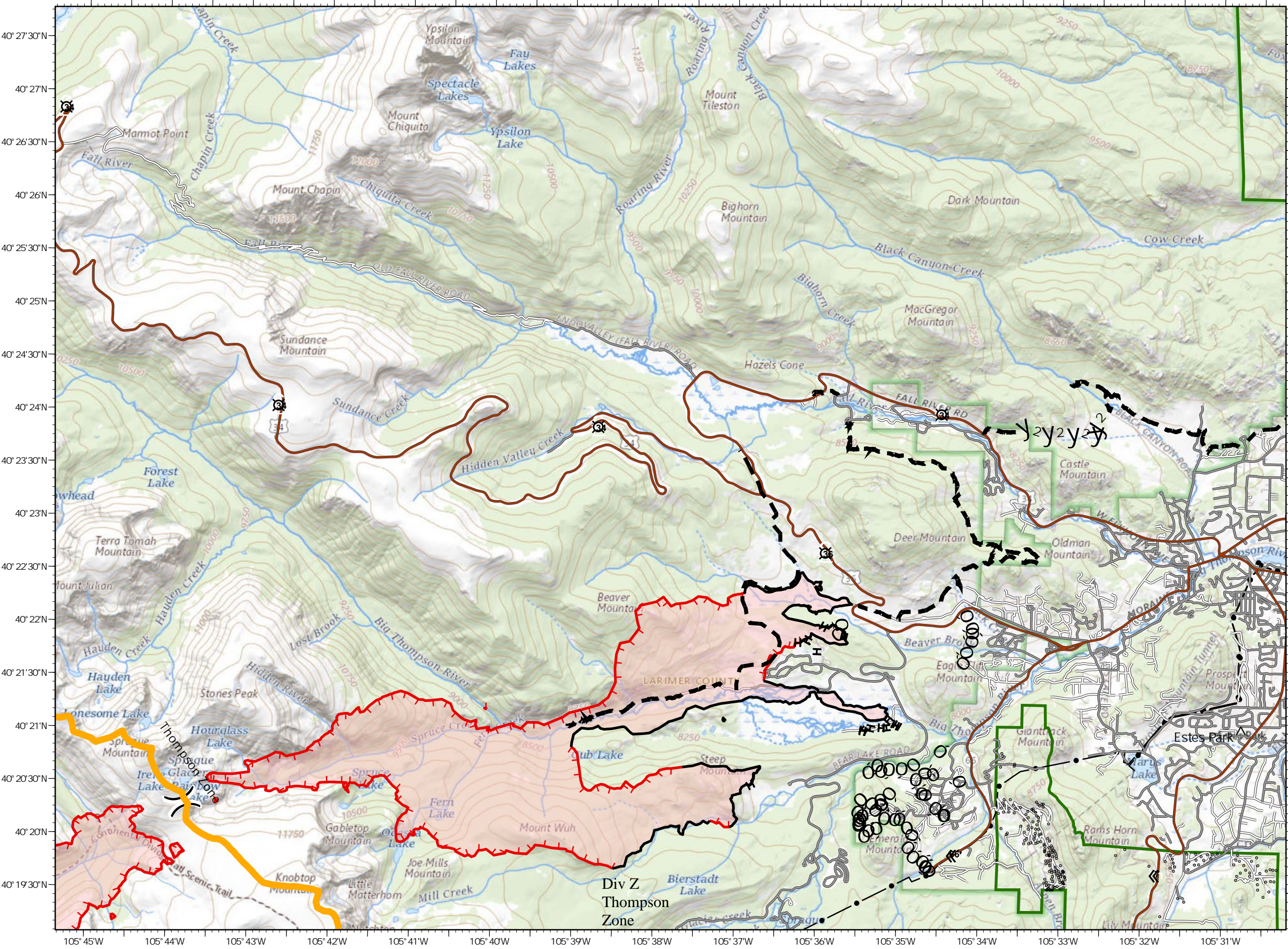
-) (Division Break
 - Uncontrolled Fire Edge
 - Contained Line
 - Ó Completed Dozer Line
 - H Completed Hand Line
 - y Road as Completed Line
 - Planned Fire Line
 - Fire Perimeter
- Forest Powerline Data**
- PubServCo_CLC411113
 - MtnPrksElectricInc
- Utilities**
- Power Lines
 - × Gas Line
 - Res. Structures
 - Structures Centroids
 - Structure Footprints
 - Zone Break

Fire Perimeter as of 10/31/20 2145 hrs
 193,804 Total Acres
 188,915 Grand Zone
 4,889 Thompson Zone

Q RM Type 3 Team

0 0.7 1.4 Miles

A1	Div I A2	A3	A4
Div K) (Div F	Div C	
B1	B2	B3	B4
Div M		Div ZA	
C1	C2	C3	C4
D1	Div RX	D3	



105° 45' W 105° 44' W 105° 43' W 105° 42' W 105° 41' W 105° 40' W 105° 39' W 105° 38' W 105° 37' W 105° 36' W 105° 35' W 105° 34' W 105° 33' W 105° 32' W 105° 31' W

EAST TROUBLESOME - GRAND ZONE

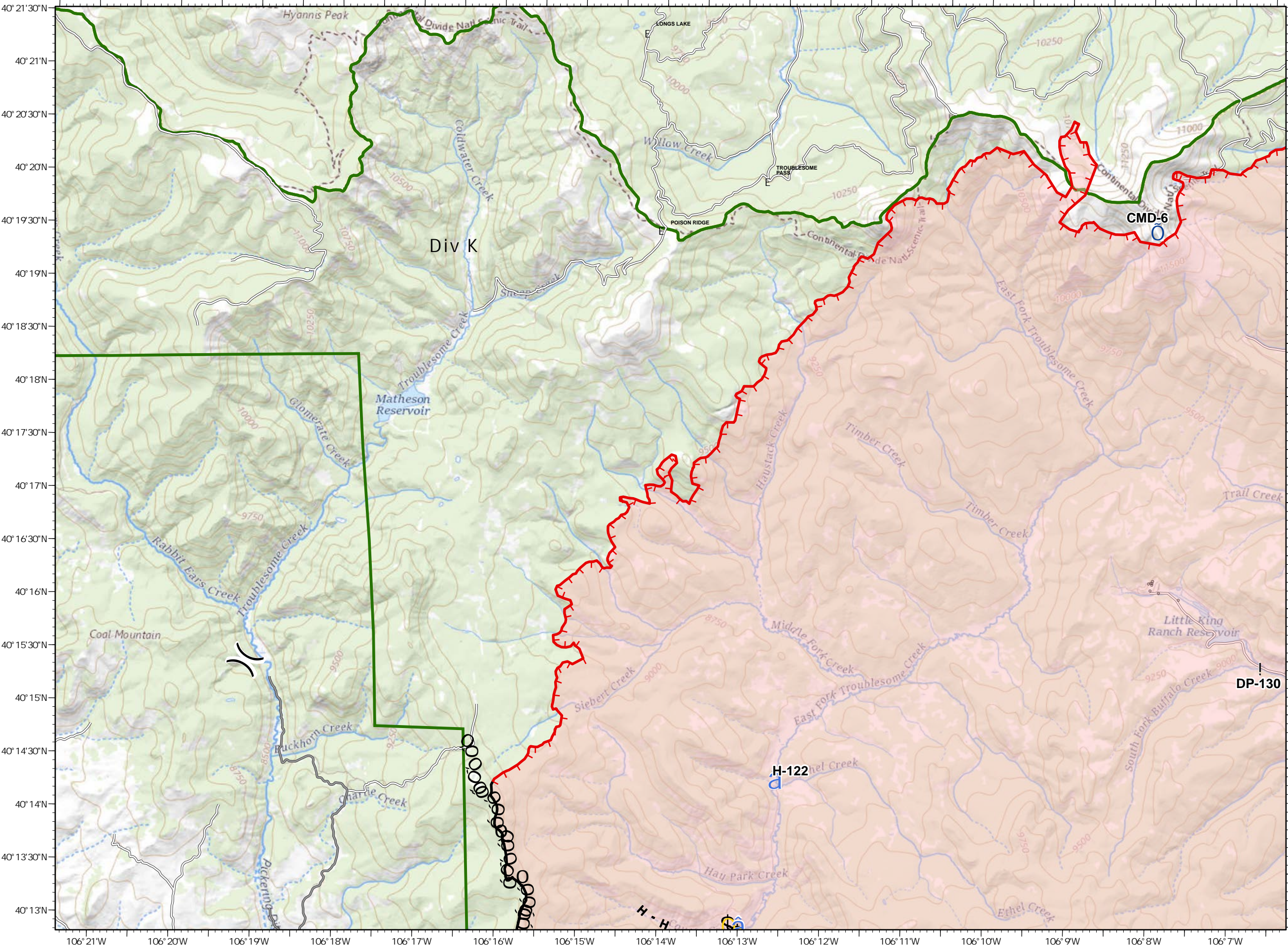
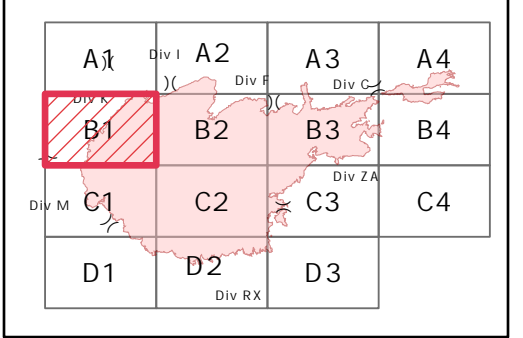
WY-MRF-000408

11/04/2020

- ! Drop Point
- Ⓐ Helispot
- Ⓞ Repeater
- Ⓢ Safety Zone
-) (Division Break
- Uncontrolled Fire Edge
- Contained Line
- Ⓞ Completed Dozer Line
- H Completed Hand Line
- y Road as Completed Line
- Fire Perimeter
- Forest Powerline Data
 - PubServCo_CLC411113
 - MtnPrksElectricInc
- Utilities
 - Power Lines
 - × Gas Line
 - Res. Structures
 - Structures Centroids
 - Structure Footprints
 - Zone Break

Fire Perimeter as of 10/31/20 2145 hrs
 193,804 Total Acres
 188,915 Grand Zone
 4,889 Thompson Zone

Q RM Type 3 Team



40° 21' 30" N
 40° 21' N
 40° 20' 30" N
 40° 20' N
 40° 19' 30" N
 40° 19' N
 40° 18' 30" N
 40° 18' N
 40° 17' 30" N
 40° 17' N
 40° 16' 30" N
 40° 16' N
 40° 15' 30" N
 40° 15' N
 40° 14' 30" N
 40° 14' N
 40° 13' 30" N
 40° 13' N

106° 21' W
 106° 20' W
 106° 19' W
 106° 18' W
 106° 17' W
 106° 16' W
 106° 15' W
 106° 14' W
 106° 13' W
 106° 12' W
 106° 11' W
 106° 10' W
 106° 9' W
 106° 8' W
 106° 7' W

EAST TROUBLESOME - GRAND ZONE

WY-MRF-000408

11/04/2020

- ! Drop Point
- Repeater
- ⊕ Water Source
- ⊗ Restricted Water Source
-) (Division Break
- Uncontrolled Fire Edge
- Completed Dozer Line
- Fire Perimeter

Forest Powerline Data

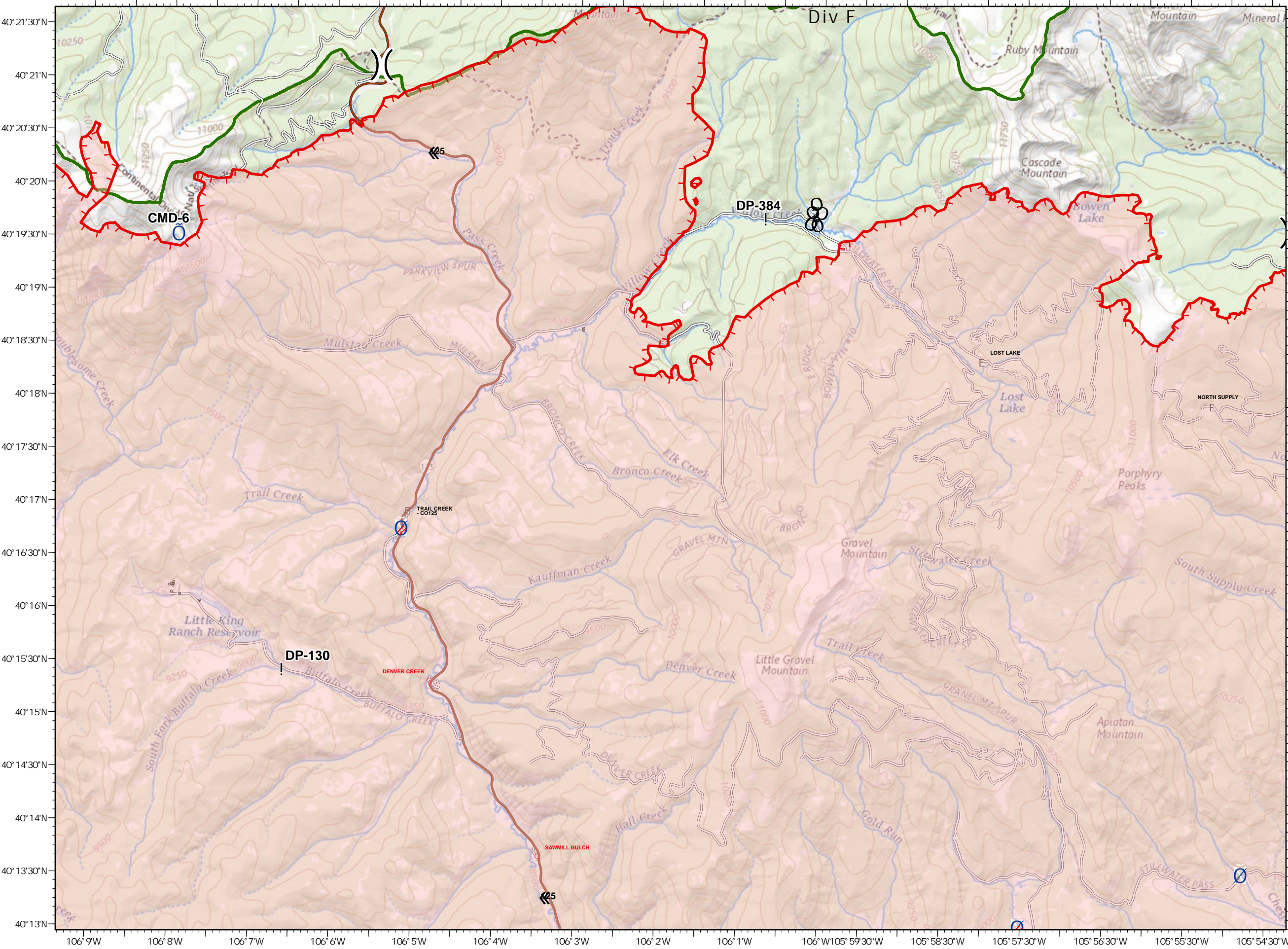
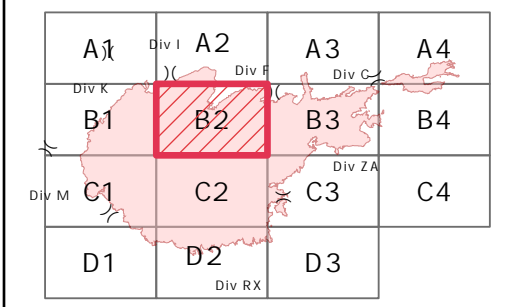
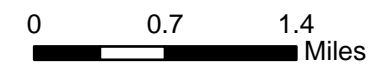
- PubServCo_CLC411113
- MtnPrksElectricInc

Utilities

- Power Lines
- × Gas Line
- Res. Structures
- Structures Centroids
- Structure Footprints
- Zone Break

Fire Perimeter as of 10/31/20 2145 hrs
 193,804 Total Acres
 188,915 Grand Zone
 4,889 Thompson Zone

Q RM Type 3 Team



EAST TROUBLESOME - GRAND ZONE

WY-MRF-000408

11/04/2020

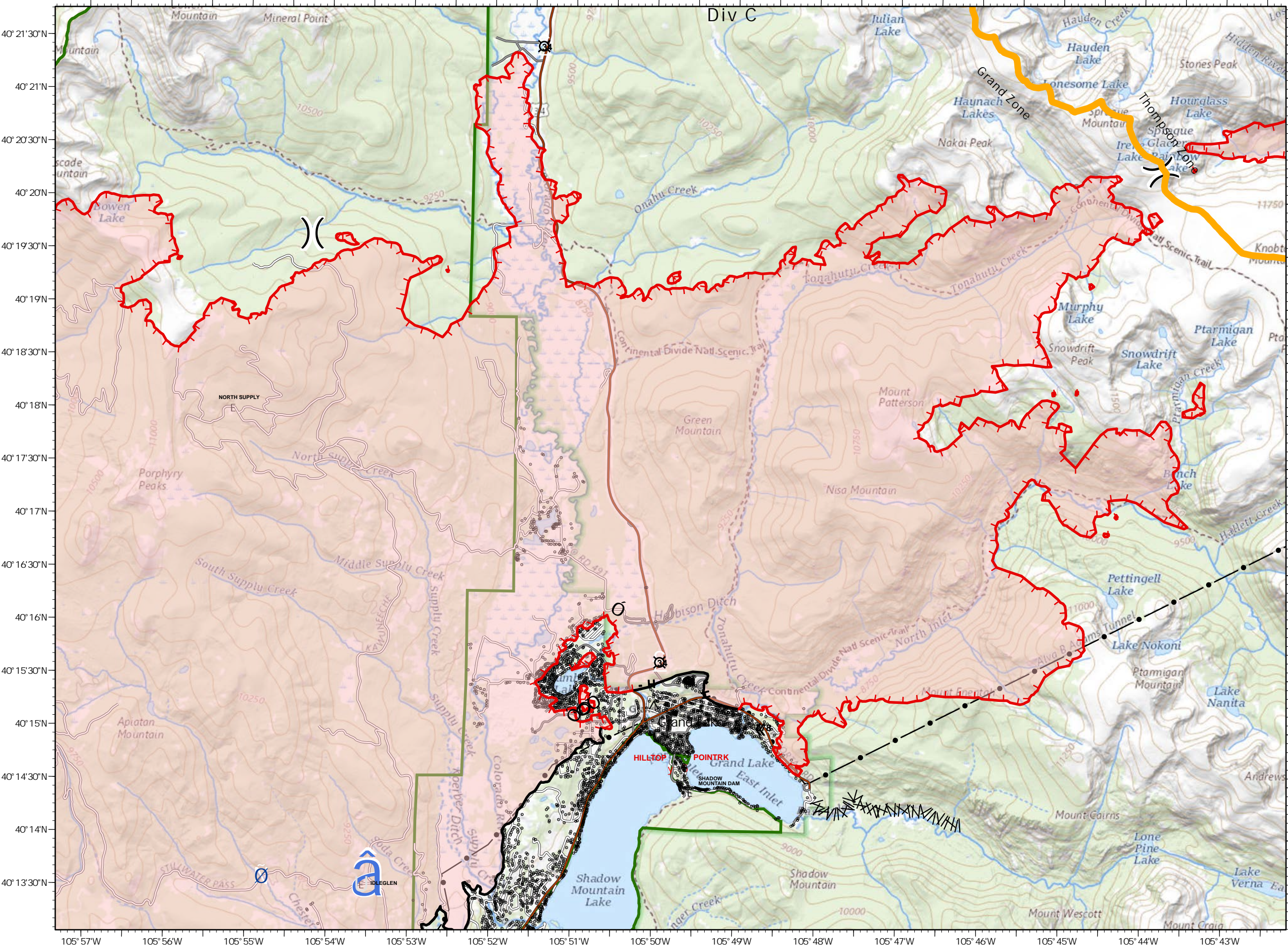
- Unimproved Landing Area
 - Water Source
 - Restricted Water Source
 - Division Break
 - Uncontrolled Fire Edge
 - Contained Line
 - Completed Dozer Line
 - Completed Hand Line
 - Line Break Completed
 - Fire Perimeter
- Forest Powerline Data**
- PubServCo_CLC411113
 - MtnPrksElectricInc
- Utilities**
- Power Lines
 - Gas Line
 - Res. Structures
 - Structures Centroids
 - Structure Footprints
 - Zone Break

Fire Perimeter as of 10/31/20 2145 hrs
 193,804 Total Acres
 188,915 Grand Zone
 4,889 Thompson Zone

RM Type 3 Team

0 0.7 1.4 Miles

A1	Div I A2	A3	A4
Div K B1	B2	Div F B3	B4
Div M C1	C2	Div Z A C3	C4
D1	Div R X D2	D3	



EAST TROUBLESOME - GRAND ZONE

WY-MRF-000408

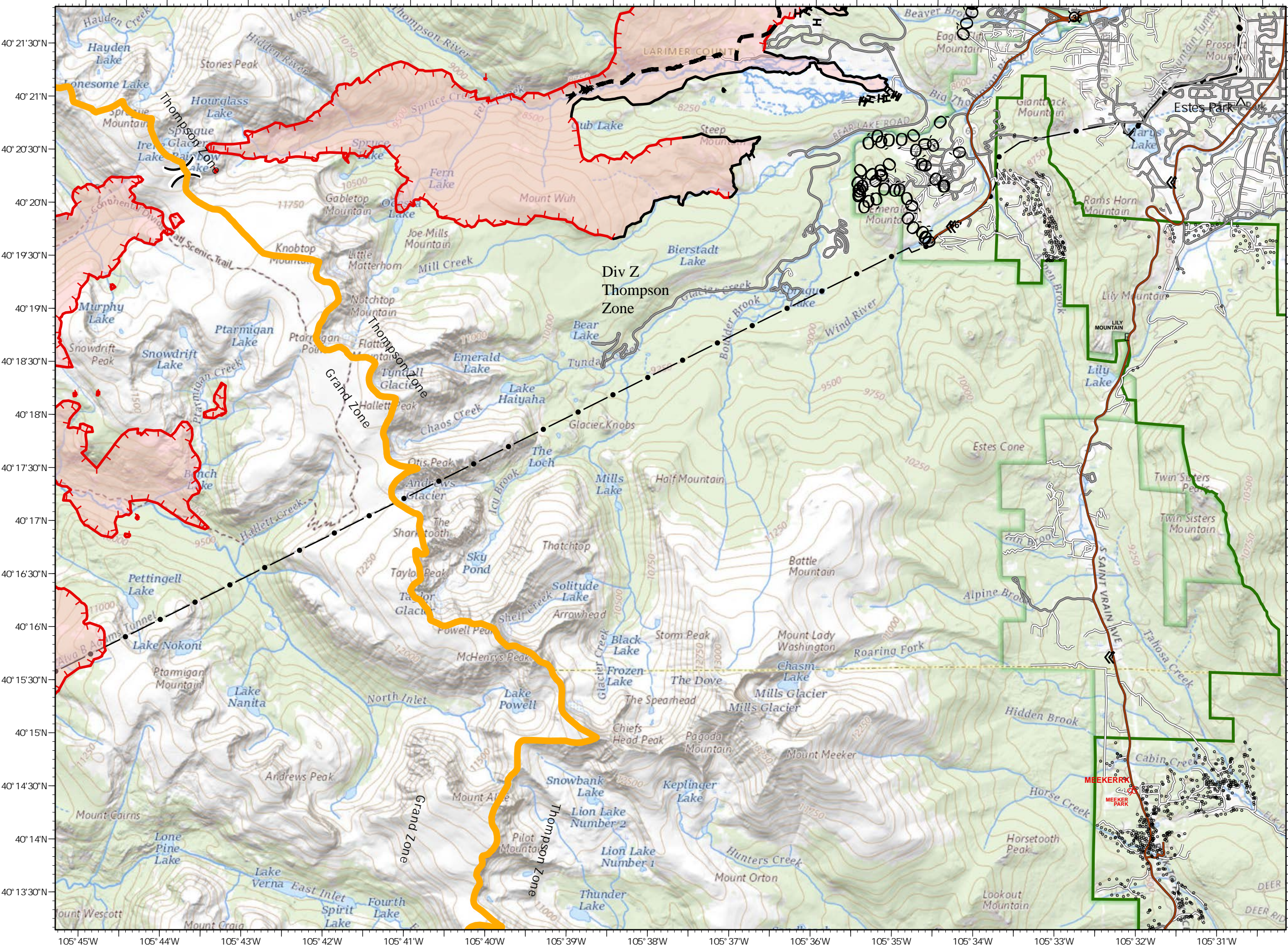
11/04/2020

-) (Division Break
 - Uncontrolled Fire Edge
 - Contained Line
 - OO Completed Dozer Line
 - H Completed Hand Line
 - Planned Fire Line
 - Fire Perimeter
- Forest Powerline Data
- PubServCo_CLC411113
 - MtnPrksElectricInc
- Utilities
- Power Lines
 - × Gas Line
 - Res. Structures
 - Structures Centroids
 - Structure Footprints
 - Zone Break

Fire Perimeter as of 10/31/20 2145 hrs
 193,804 Total Acres
 188,915 Grand Zone
 4,889 Thompson Zone

Q RM Type 3 Team

	Div I	A2	A3	A4
Div K) (Div F	Div C	
	B1	B2	B3	B4
Div M	C1	C2	Div Z	C4
	D1	Div RX	D3	



EAST TROUBLESOME - GRAND ZONE

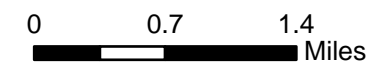
WY-MRF-000408

11/04/2020

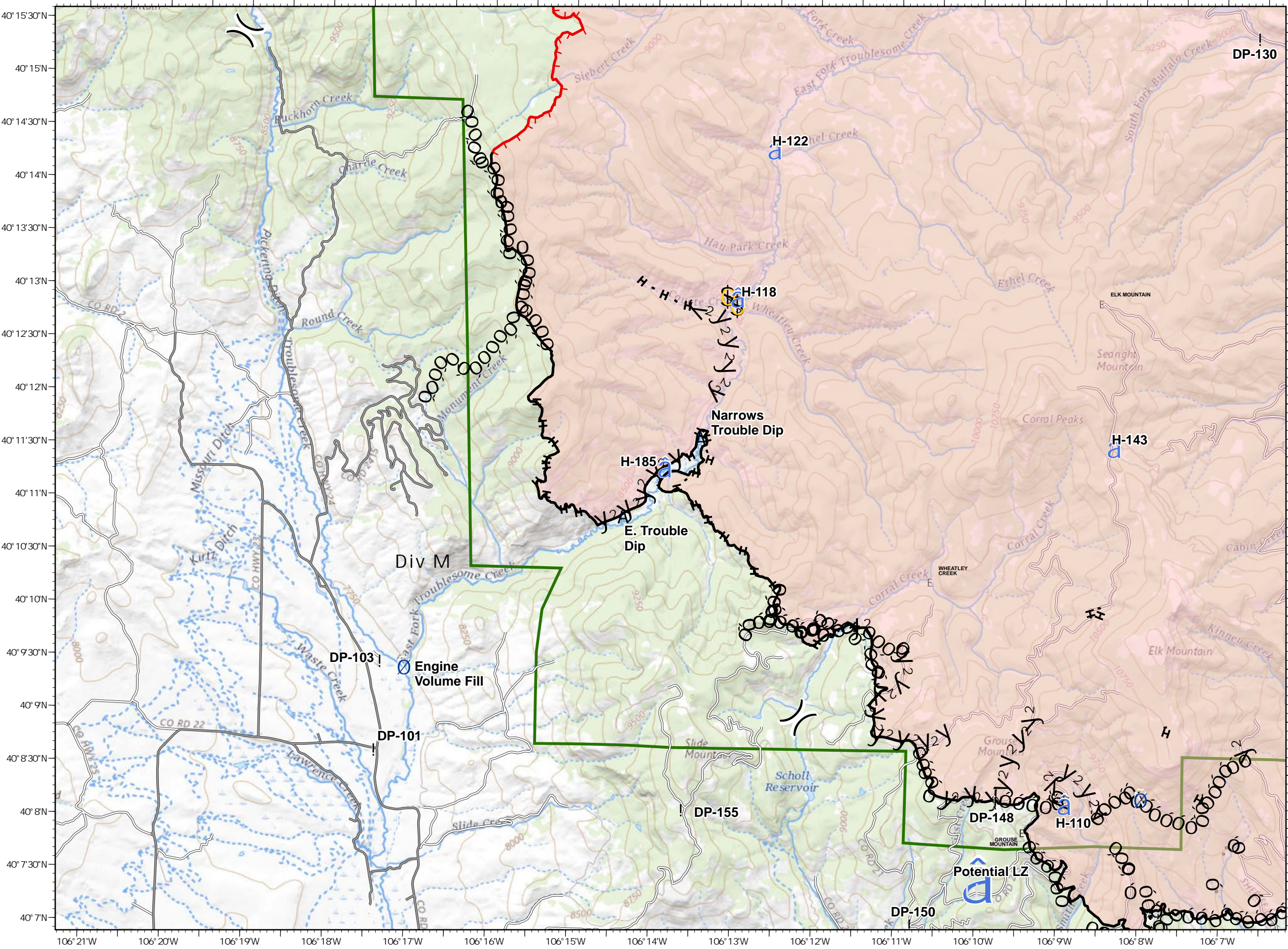
- A** Dip Site
- !** Drop Point
- â** Unimproved Landing Area
- â** Helispot
- \$** Safety Zone
- Ø** Water Source
-) (** Division Break
- Uncontrolled Fire Edge
- Contained Line
- Ó** Completed Dozer Line
- H** Completed Hand Line
- y** Road as Completed Line
- Fire Perimeter
- Forest Powerline Data**
- PubServCo_CLC411113
- MtnPrksElectricInc
- Utilities**
- Power Lines
- ×** Gas Line
- Res. Structures
- Structures Centroids
- Structure Footprints
- Zone Break

Fire Perimeter as of 10/31/20 2145 hrs
 193,804 Total Acres
 188,915 Grand Zone
 4,889 Thompson Zone

Q RM Type 3 Team



A1	Div I A2	A3	A4
Div K	(Div P	Div C
B1	B2	B3	B4
Div M C1	C2	Div ZA C3	C4
D1	D2	Div RX D3	



**EAST TROUBLESOME -
GRAND ZONE
WY-MRF-000408
11/04/2020**

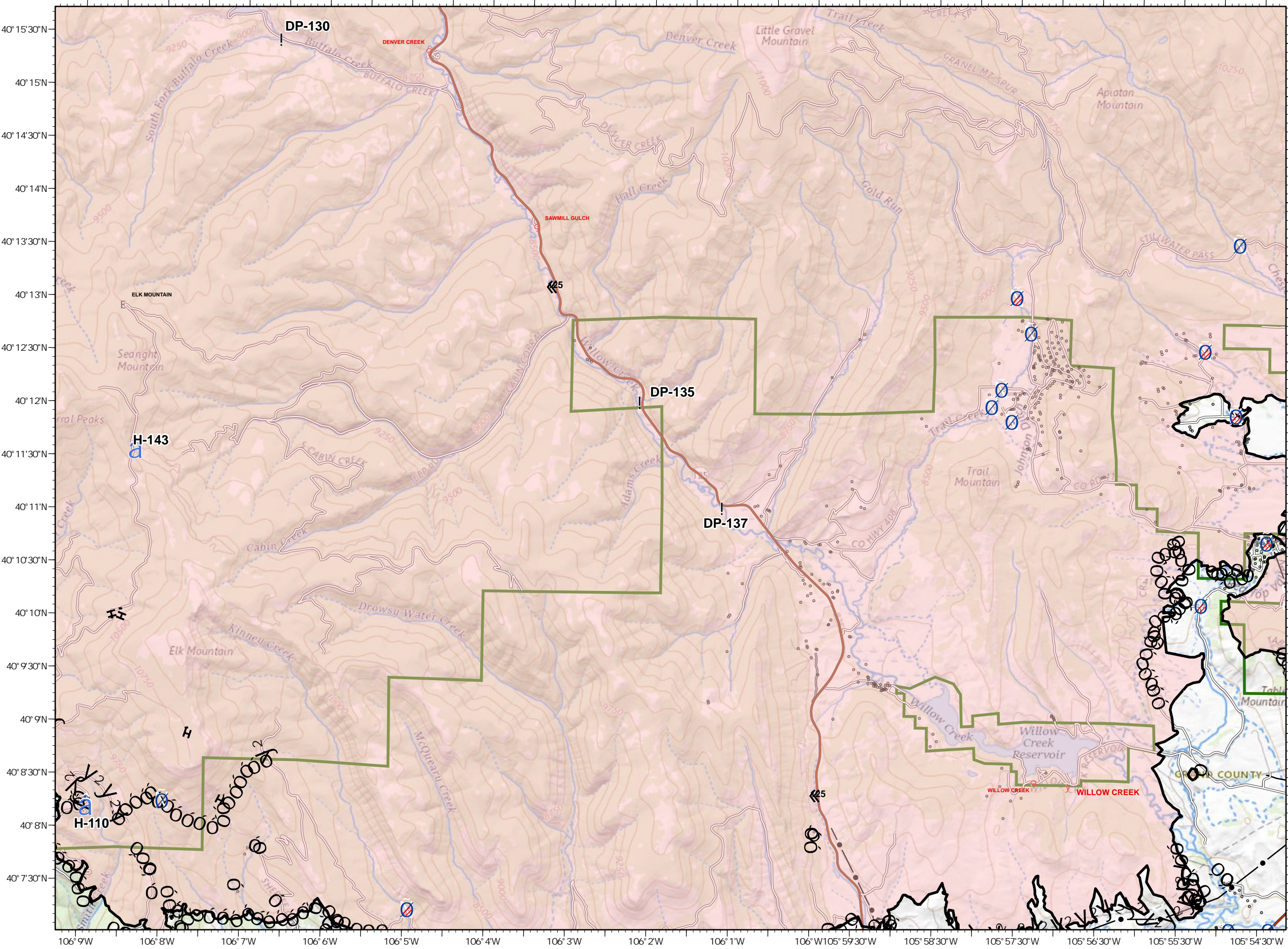
- ! Drop Point
- â Helispot
- ⊕ Water Source
- ⊗ Restricted Water Source
-) (Division Break
- Contained Line
- Ó Completed Dozer Line
- H Completed Hand Line
- y Road as Completed Line
- Fire Perimeter
- Forest Powerline Data
 - PubServCo_CLC411113
 - MtnPrksElectricInc
- Utilities
 - Power Lines
 - × Gas Line
 - Res. Structures
 - Structures Centroids
 - Structure Footprints
 - Zone Break

Fire Perimeter as of 10/31/20 2145 hrs
 193,804 Total Acres
 188,915 Grand Zone
 4,889 Thompson Zone

Q RM Type 3
Team



A1	Div I A2	A3	A4
Div K B1	Div P B2	Div C B3	B4
Div M C1	C2	Div ZA C3	C4
D1	Div RX D2	D3	



EAST TROUBLESOME - GRAND ZONE

WY-MRF-000408

11/04/2020

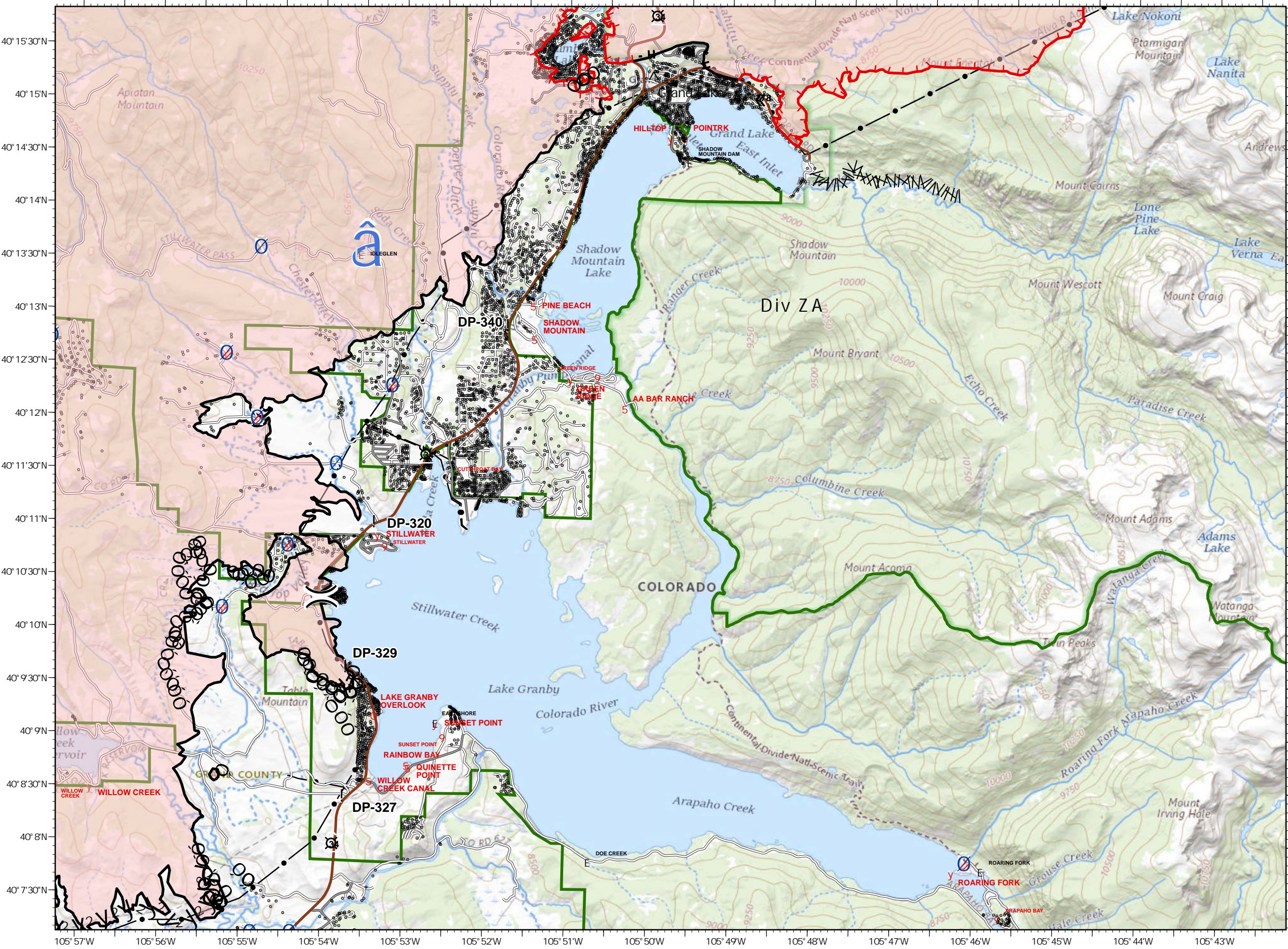
- ! Drop Point
- ⊕ Unimproved Landing Area
- ⊕ Water Source
- ⊕ Restricted Water Source
-) (Division Break
- Uncontrolled Fire Edge
- Contained Line
- Ó Completed Dozer Line
- H Completed Hand Line
- Y Road as Completed Line
- M Line Break Completed
- Fire Perimeter
- Forest Powerline Data
 - PubServCo_CLC411113
 - MtnPrksElectricInc
- Utilities
 - Power Lines
 - × Gas Line
 - Res. Structures
 - Structures Centroids
 - Structure Footprints
 - Zone Break

Fire Perimeter as of 10/31/20 2145 hrs
 193,804 Total Acres
 188,915 Grand Zone
 4,889 Thompson Zone

Q RM Type 3 Team



	Div I	Div J	Div K	Div L
A1	A2	A3	A4	
Div M	B1	B2	B3	B4
	C1	C2	C3	C4
	D1	D2	D3	Div RX



EAST TROUBLESOME - GRAND ZONE

WY-MRF-000408

11/04/2020

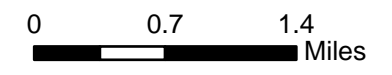
- Zone Break
- Uncontrolled Fire Edge
- Fire Perimeter

- ### Forest Powerline Data
- PubServCo_CLC411113
 - MtnPrksElectricInc

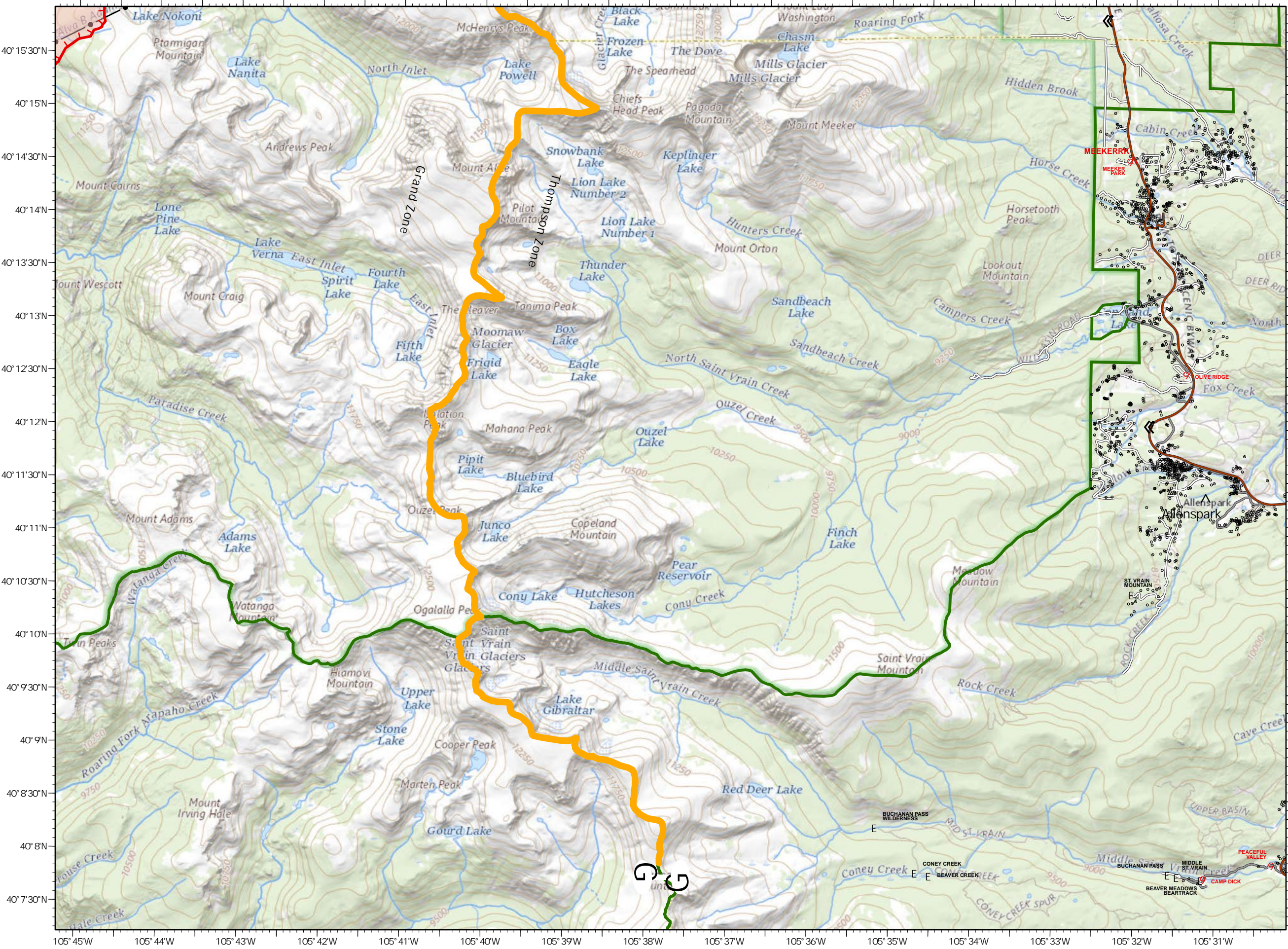
- ### Utilities
- Power Lines
 - Gas Line
 - Res. Structures
 - Structures Centroids
 - Structure Footprints
 - Zone Break

Fire Perimeter as of 10/31/20 2145 hrs
 193,804 Total Acres
 188,915 Grand Zone
 4,889 Thompson Zone

RM Type 3 Team



A1	Div I A2	A3	A4
Div K B1	B2	Div C B3	B4
Div M C1	C2	Div Z C3	C4
D1	Div RX D2	D3	



EAST TROUBLESOME - GRAND ZONE

WY-MRF-000408

11/04/2020

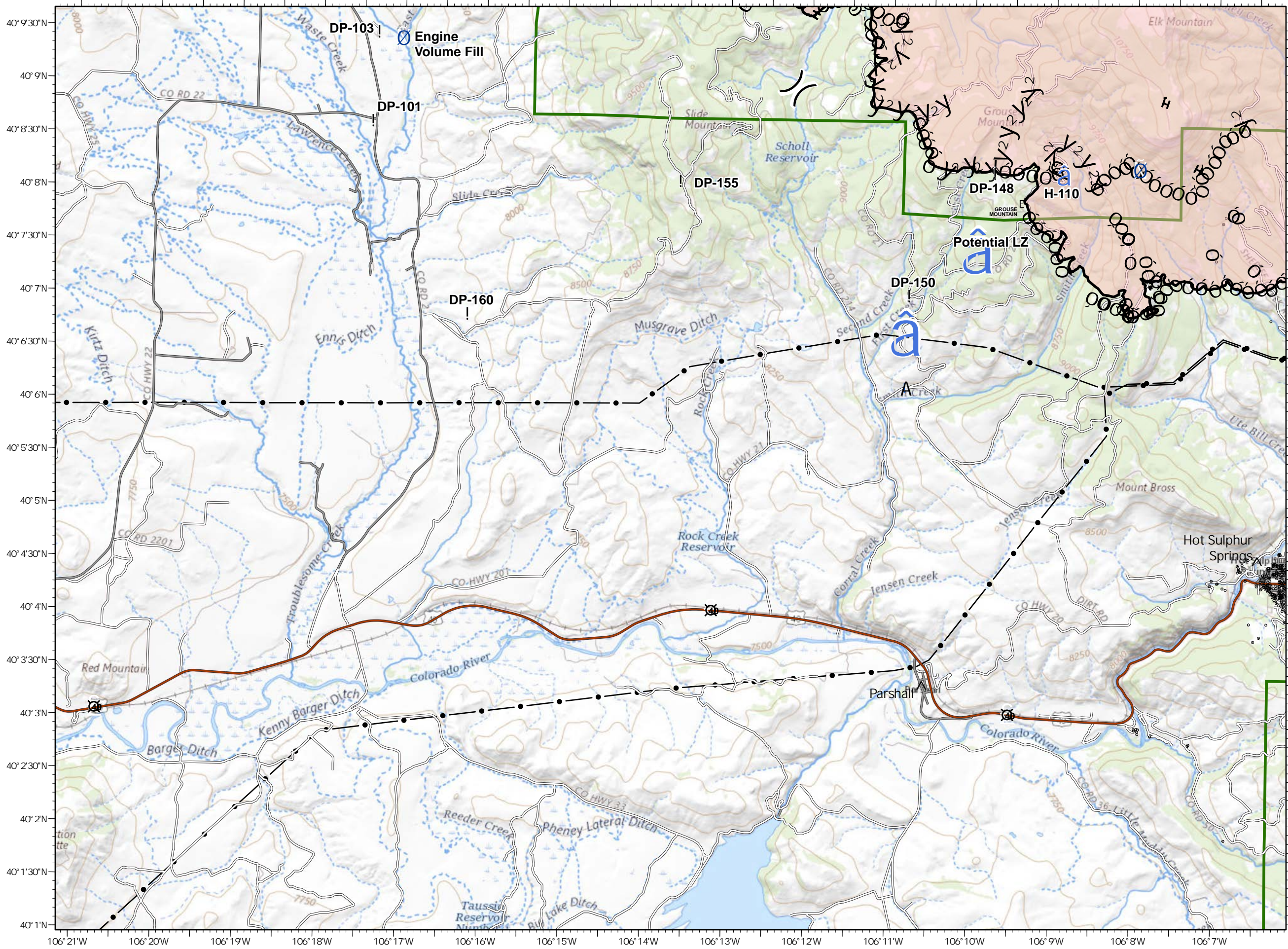
- A** Dip Site
- !** Drop Point
- Ⓐ** Unimproved Landing Area
- Ⓐ** Helispot
- ⊕** Water Source
-)** Division Break
- Contained Line
- ⓪** Completed Dozer Line
- H** Completed Hand Line
- y** Road as Completed Line
- Fire Perimeter
- Forest Powerline Data
 - PubServCo_CLC411113
 - MtnPrksElectricInc
- Utilities**
 - Power Lines
 - Gas Line
 - Res. Structures
 - Structures Centroids
 - Structure Footprints
 - Zone Break

Fire Perimeter as of 10/31/20 2145 hrs
 193,804 Total Acres
 188,915 Grand Zone
 4,889 Thompson Zone

Q RM Type 3 Team



A1	Div I A2	A3	A4
Div K B1	B2	Div P B3	B4
Div M C1	C2	Div Z A C3	C4
D1	D2	Div RX D3	



40° 9'30" N
40° 9' N
40° 8'30" N
40° 8' N
40° 7'30" N
40° 7' N
40° 6'30" N
40° 6' N
40° 5'30" N
40° 5' N
40° 4'30" N
40° 4' N
40° 3'30" N
40° 3' N
40° 2'30" N
40° 2' N
40° 1'30" N
40° 1' N

106° 21' W 106° 20' W 106° 19' W 106° 18' W 106° 17' W 106° 16' W 106° 15' W 106° 14' W 106° 13' W 106° 12' W 106° 11' W 106° 10' W 106° 9' W 106° 8' W 106° 7' W

EAST TROUBLESOME - GRAND ZONE

WY-MRF-000408

11/04/2020

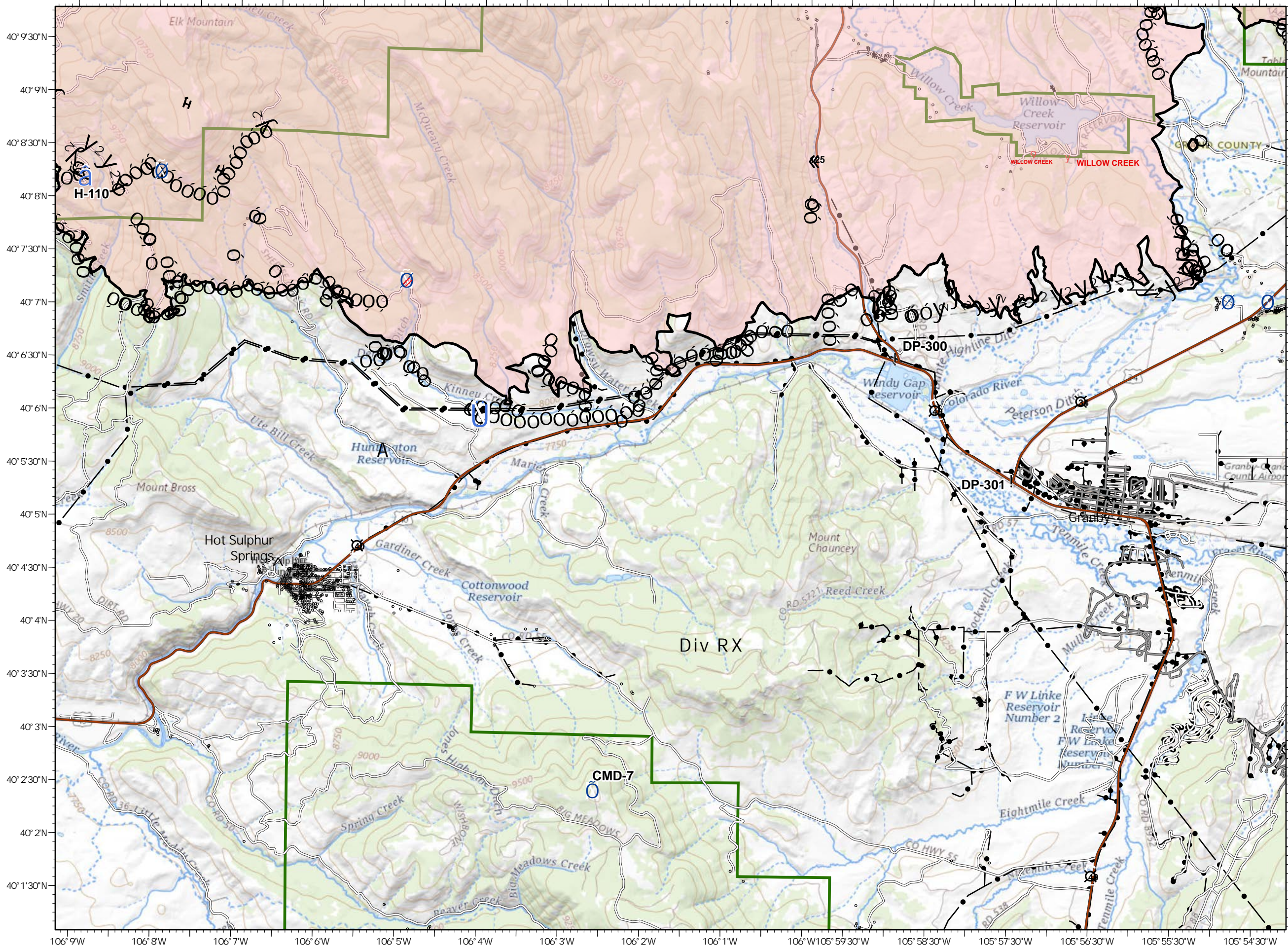
- A** Dip Site
- !** Drop Point
- â** Helispot
- ⊖** Repeater
- U** Staging Area
- ⊕** Water Source
- ⊗** Restricted Water Source
- Contained Line
- ⊖** Completed Dozer Line
- H** Completed Hand Line
- y** Road as Completed Line
- Fire Perimeter
- Forest Powerline Data**
- PubServCo_CLC411113
- MtnPrksElectricInc
- Utilities**
- Power Lines
- ×** Gas Line
- Res. Structures
- Structures Centroids
- Structure Footprints
- Zone Break

Fire Perimeter as of 10/31/20 2145 hrs
 193,804 Total Acres
 188,915 Grand Zone
 4,889 Thompson Zone

Q RM Type 3 Team



Div I	A1	A2	A3	A4
Div K	B1	B2	B3	B4
Div M	C1	C2	C3	C4
	D1	D2	D3	



40° 9'30"N
40° 9'N
40° 8'30"N
40° 8'N
40° 7'30"N
40° 7'N
40° 6'30"N
40° 6'N
40° 5'30"N
40° 5'N
40° 4'30"N
40° 4'N
40° 3'30"N
40° 3'N
40° 2'30"N
40° 2'N
40° 1'30"N

106° 9'W 106° 8'W 106° 7'W 106° 6'W 106° 5'W 106° 4'W 106° 3'W 106° 2'W 106° 1'W 105° 59'30"W 105° 58'30"W 105° 57'30"W 105° 56'30"W 105° 55'30"W 105° 54'30"W

EAST TROUBLESOME - GRAND ZONE

WY-MRF-000408

11/04/2020

- ! Drop Point
- ⊗ Water Source
- ⊗ Restricted Water Source
- Contained Line
- Ó Completed Dozer Line
- H Completed Hand Line
- y Road as Completed Line
- Fire Perimeter

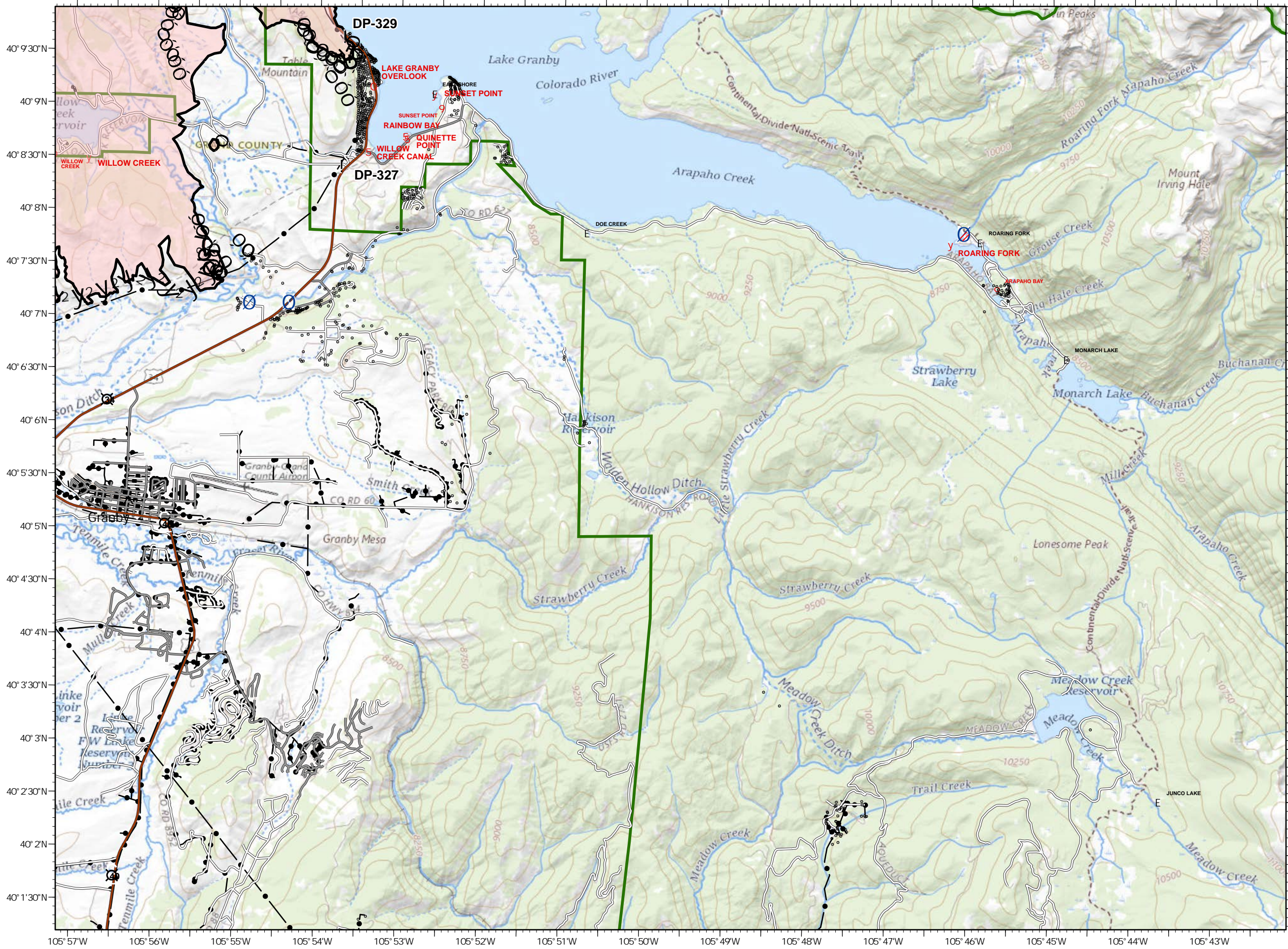
- Forest Powerline Data**
- PubServCo_CLC411113
 - MtnPrksElectricInc

- Utilities**
- Power Lines
 - ✕ Gas Line
 - Res. Structures
 - Structures Centroids
 - Structure Footprints
 - ▬ Zone Break

Fire Perimeter as of 10/31/20 2145 hrs
 193,804 Total Acres
 188,915 Grand Zone
 4,889 Thompson Zone

Q RM Type 3 Team

A1	Div I A2	A3	A4
Div K B1	B2	Div P B3	B4
Div M C1	C2	Div Z A C3	C4
D1	Div R X D2	D3	



40° 9'30"N
 40° 9'N
 40° 8'30"N
 40° 8'N
 40° 7'30"N
 40° 7'N
 40° 6'30"N
 40° 6'N
 40° 5'30"N
 40° 5'N
 40° 4'30"N
 40° 4'N
 40° 3'30"N
 40° 3'N
 40° 2'30"N
 40° 2'N
 40° 1'30"N

105° 57'W 105° 56'W 105° 55'W 105° 54'W 105° 53'W 105° 52'W 105° 51'W 105° 50'W 105° 49'W 105° 48'W 105° 47'W 105° 46'W 105° 45'W 105° 44'W 105° 43'W