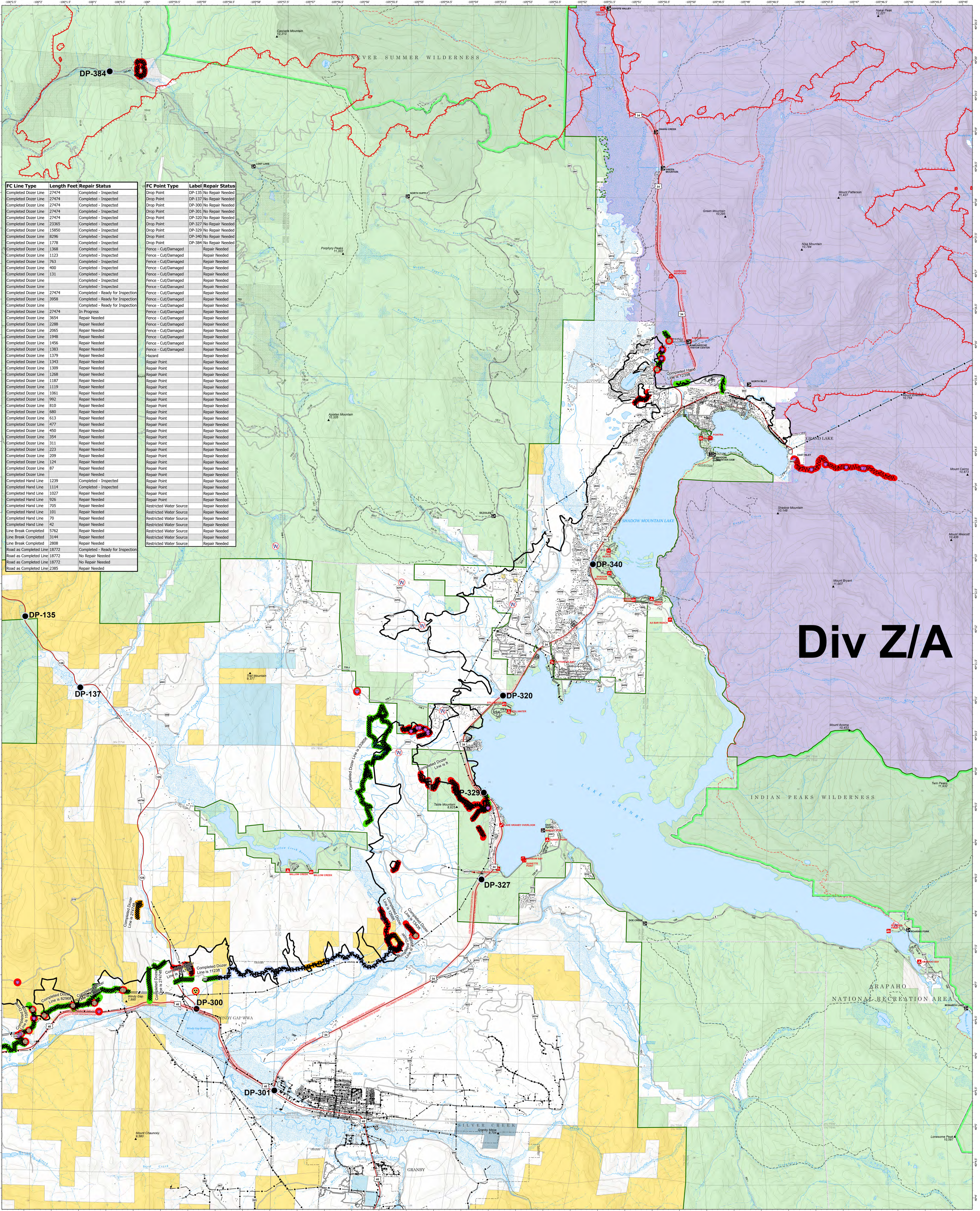


# SUPPRESSION REPAIR - EAST TROUBLESOME - EAST

NOVEMBER 7, 2020

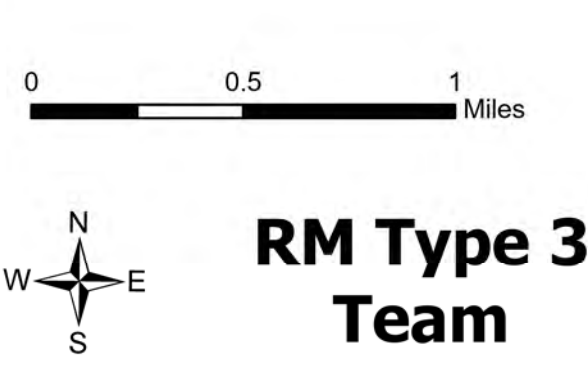


FC Line Type	Length Feet	Repair Status	FC Point Type	Label	Repair Status
Completed Dozer Line	27474	Completed - Inspected	Drop Point	DP-135	No Repair Needed
Completed Dozer Line	27474	Completed - Inspected	Drop Point	DP-137	No Repair Needed
Completed Dozer Line	27474	Completed - Inspected	Drop Point	DP-300	No Repair Needed
Completed Dozer Line	27474	Completed - Inspected	Drop Point	DP-301	No Repair Needed
Completed Dozer Line	27474	Completed - Inspected	Drop Point	DP-320	No Repair Needed
Completed Dozer Line	23865	Completed - Inspected	Drop Point	DP-327	No Repair Needed
Completed Dozer Line	15850	Completed - Inspected	Drop Point	DP-329	No Repair Needed
Completed Dozer Line	6296	Completed - Inspected	Drop Point	DP-340	No Repair Needed
Completed Dozer Line	1778	Completed - Inspected	Drop Point	DP-384	No Repair Needed
Completed Dozer Line	1368	Completed - Inspected	Fence - Cut/Damaged		Repair Needed
Completed Dozer Line	1123	Completed - Inspected	Fence - Cut/Damaged		Repair Needed
Completed Dozer Line	763	Completed - Inspected	Fence - Cut/Damaged		Repair Needed
Completed Dozer Line	400	Completed - Inspected	Fence - Cut/Damaged		Repair Needed
Completed Dozer Line	131	Completed - Inspected	Fence - Cut/Damaged		Repair Needed
Completed Dozer Line	1778	Completed - Inspected	Fence - Cut/Damaged		Repair Needed
Completed Dozer Line	27474	Completed - Ready for Inspection	Fence - Cut/Damaged		Repair Needed
Completed Dozer Line	3958	Completed - Ready for Inspection	Fence - Cut/Damaged		Repair Needed
Completed Dozer Line	27474	In Progress	Fence - Cut/Damaged		Repair Needed
Completed Dozer Line	3654	Repair Needed	Fence - Cut/Damaged		Repair Needed
Completed Dozer Line	2288	Repair Needed	Fence - Cut/Damaged		Repair Needed
Completed Dozer Line	2065	Repair Needed	Fence - Cut/Damaged		Repair Needed
Completed Dozer Line	1948	Repair Needed	Fence - Cut/Damaged		Repair Needed
Completed Dozer Line	1456	Repair Needed	Fence - Cut/Damaged		Repair Needed
Completed Dozer Line	1383	Repair Needed	Fence - Cut/Damaged		Repair Needed
Completed Dozer Line	1379	Repair Needed	Repair Point		Repair Needed
Completed Dozer Line	1343	Repair Needed	Repair Point		Repair Needed
Completed Dozer Line	1309	Repair Needed	Repair Point		Repair Needed
Completed Dozer Line	1268	Repair Needed	Repair Point		Repair Needed
Completed Dozer Line	1187	Repair Needed	Repair Point		Repair Needed
Completed Dozer Line	1119	Repair Needed	Repair Point		Repair Needed
Completed Dozer Line	1061	Repair Needed	Repair Point		Repair Needed
Completed Dozer Line	992	Repair Needed	Repair Point		Repair Needed
Completed Dozer Line	810	Repair Needed	Repair Point		Repair Needed
Completed Dozer Line	680	Repair Needed	Repair Point		Repair Needed
Completed Dozer Line	613	Repair Needed	Repair Point		Repair Needed
Completed Dozer Line	477	Repair Needed	Repair Point		Repair Needed
Completed Dozer Line	450	Repair Needed	Repair Point		Repair Needed
Completed Dozer Line	354	Repair Needed	Repair Point		Repair Needed
Completed Dozer Line	311	Repair Needed	Repair Point		Repair Needed
Completed Dozer Line	223	Repair Needed	Repair Point		Repair Needed
Completed Dozer Line	209	Repair Needed	Repair Point		Repair Needed
Completed Dozer Line	124	Repair Needed	Repair Point		Repair Needed
Completed Dozer Line	87	Repair Needed	Repair Point		Repair Needed
Completed Dozer Line	1239	Completed - Inspected	Repair Point		Repair Needed
Completed Hand Line	1114	Completed - Inspected	Repair Point		Repair Needed
Completed Hand Line	1027	Repair Needed	Repair Point		Repair Needed
Completed Hand Line	926	Repair Needed	Repair Point		Repair Needed
Completed Hand Line	705	Repair Needed	Restricted Water Source		Repair Needed
Completed Hand Line	101	Repair Needed	Restricted Water Source		Repair Needed
Completed Hand Line	70	Repair Needed	Restricted Water Source		Repair Needed
Completed Hand Line	42	Repair Needed	Restricted Water Source		Repair Needed
Line Break Completed	1562	Repair Needed	Restricted Water Source		Repair Needed
Line Break Completed	3144	Repair Needed	Restricted Water Source		Repair Needed
Line Break Completed	2808	Repair Needed	Restricted Water Source		Repair Needed
Road as Completed Line	18772	Completed - Ready for Inspection			
Road as Completed Line	18772	No Repair Needed			
Road as Completed Line	2385	Repair Needed			

Div Z/A

**EAST TROUBLESOME - 11/04/20 1850 hrs**  
**GRAND ZONE 193,812 Total Acres**  
**WY-MRF-000408 188,915 Grand Zone**  
**4,897 Thompson Zone**

<ul style="list-style-type: none"> <li>Culvert</li> <li>Drop Point</li> <li>Fence - Cut/Damaged</li> <li>Hazard</li> <li>Repair Point</li> </ul>	<ul style="list-style-type: none"> <li>Restricted Water Source</li> <li>Uncontrolled Fire Edge</li> <li>Contained Line</li> <li>Completed Dozer Line</li> </ul>	<ul style="list-style-type: none"> <li>Completed Hand Line</li> <li>Road as Completed Line</li> <li>Line Break Completed</li> <li>BLM CO Mining Claims</li> </ul>	<ul style="list-style-type: none"> <li>Repair Status Point</li> <li>Completed - Inspected</li> <li>In Use - Fire Management</li> <li>Completed - Ready for Inspection</li> <li>In Progress</li> <li>Repair Needed</li> <li>No Repair Needed</li> <li>Other - See Comments</li> <li>Unknown</li> </ul>	<ul style="list-style-type: none"> <li>Repair Status Line</li> <li>Completed - Inspected</li> <li>In Use - Fire Management</li> <li>Completed - Ready for Inspection</li> <li>In Progress</li> <li>Repair Needed</li> <li>No Repair Needed</li> <li>Other - See Comments</li> <li>Unknown</li> </ul>	<ul style="list-style-type: none"> <li>Surface Management Agency (Outline)</li> <li>Bureau of Land Management</li> <li>Bureau of Reclamation</li> <li>Indian Reservation</li> <li>Military Reservation</li> <li>National Grasslands</li> <li>National Park Service</li> <li>Other Federal</li> </ul>	<ul style="list-style-type: none"> <li>Private</li> <li>State</li> <li>State, County, City, Areas</li> <li>Bankhead-Jones Land Use Lands</li> <li>US Fish and Wildlife Service</li> <li>US Forest Service</li> <li>World Hillshade</li> </ul>
--	---	---	---	--	--	---



RM Type 3 Team