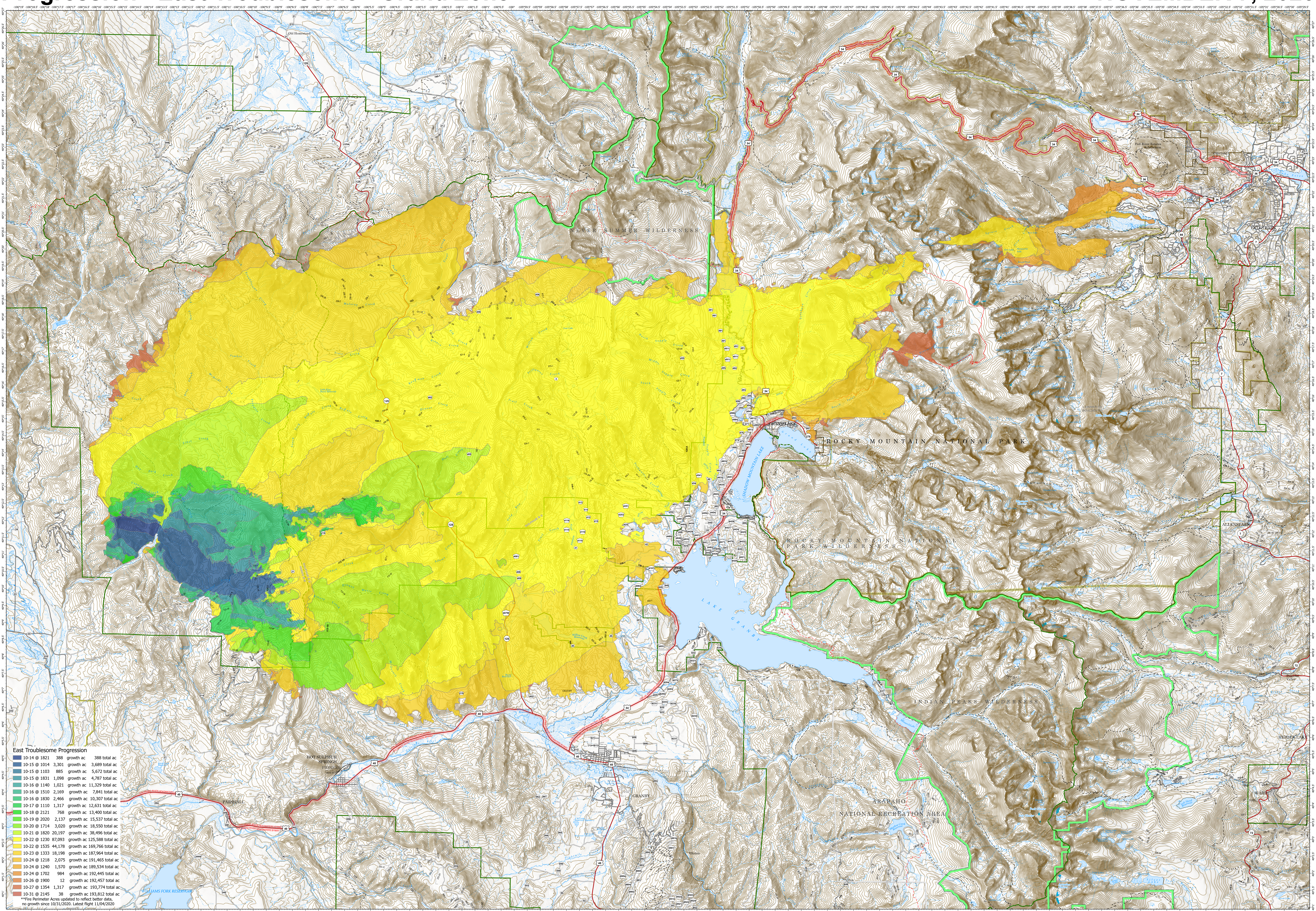


# Progression - East Troublesome - Grand Zone

NOVEMBER 7, 2020



**East Troublesome Progression**

|              |                  |                  |
|--------------|------------------|------------------|
| 10-14 @ 1821 | 388 growth ac    | 388 total ac     |
| 10-15 @ 1014 | 3,301 growth ac  | 3,689 total ac   |
| 10-15 @ 1103 | 885 growth ac    | 5,672 total ac   |
| 10-15 @ 1831 | 1,098 growth ac  | 4,787 total ac   |
| 10-16 @ 1140 | 1,021 growth ac  | 11,329 total ac  |
| 10-16 @ 1510 | 2,166 growth ac  | 7,941 total ac   |
| 10-16 @ 1820 | 2,466 growth ac  | 10,307 total ac  |
| 10-17 @ 1110 | 1,317 growth ac  | 12,621 total ac  |
| 10-18 @ 2121 | 768 growth ac    | 13,400 total ac  |
| 10-19 @ 2020 | 2,137 growth ac  | 15,537 total ac  |
| 10-20 @ 1714 | 3,020 growth ac  | 18,550 total ac  |
| 10-21 @ 1820 | 20,197 growth ac | 38,496 total ac  |
| 10-22 @ 1230 | 87,093 growth ac | 125,588 total ac |
| 10-22 @ 1535 | 44,178 growth ac | 169,766 total ac |
| 10-23 @ 1333 | 18,198 growth ac | 187,964 total ac |
| 10-24 @ 1248 | 2,075 growth ac  | 194,445 total ac |
| 10-24 @ 1240 | 1,570 growth ac  | 189,534 total ac |
| 10-24 @ 1702 | 994 growth ac    | 192,445 total ac |
| 10-26 @ 1900 | 12 growth ac     | 192,457 total ac |
| 10-27 @ 1354 | 1,317 growth ac  | 193,774 total ac |
| 10-31 @ 2145 | 38 growth ac     | 193,812 total ac |

\*\*Fire Perimeter Acres updated to reflect better data, no growth since 10/31/2020. Latest flight 11/04/2020.

## EAST TROUBLESOME - GRAND ZONE WY-MRF-000408

- Scenic\_Byways
- FS\_Administrative\_Forest
- Wilderness
- County\_Boundary
- FS\_Proclaimed\_Forest\_Grassland
- FS\_Ranger\_Districts
- State\_Boundary
- World\_Hillshade

RM Type 3 Team

Map Projection: UTM Zone 13, NAD83