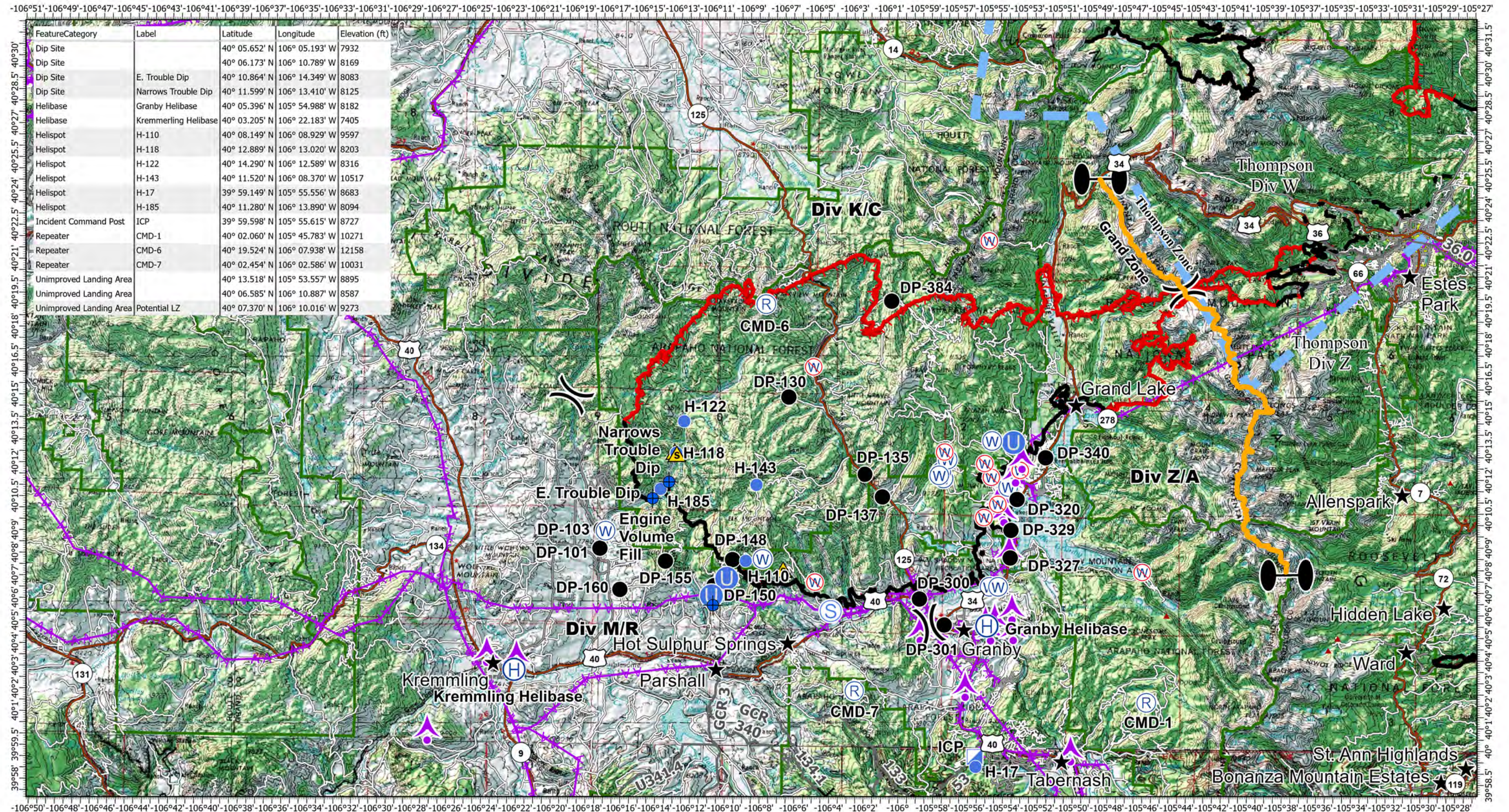


Air Operations - East Troublesome - Grand Zone

11/7/2020



EAST TROUBLESOME - GRAND ZONE
 11/04/20 1850 hrs
 193,812 Total Acres
 188,915 Grand Zone
 4,897 Thompson Zone

- | | | | | | |
|-----------------|---------------------------|----------------|---------------------------|------------------------------------|--------------------------------|
| ✦ Aerial Hazard | ⊕ Helibase | Ⓡ Repeater | Ⓜ Restricted Water Source | — Uncontrolled Fire Edge | Ⓛ Temporary Flight Restriction |
| ✕ Closure | • Unimproved Landing Area | ⚠ Safety Zone | ⦿ Zone Break | — Contained Line | ▭ Fire Perimeter |
| ◆ Dip Site | • Helispot | Ⓢ Staging Area | ⌋ Division Break | ⋯ Fire Break Planned or Incomplete | ▭ FS Proclaimed Forest |
| ● Drop Point | Ⓛ Incident Command Post | Ⓜ Water Source | | — Planned Fire Line | — ZoneBreak |

RM Type 3 Team

0 5 10 Miles

FeatureCategory	Label	Latitude	Longitude	Elevation (ft)
Dip Site		40° 05.652' N	106° 05.193' W	7932
Dip Site		40° 06.173' N	106° 10.789' W	8169
Dip Site	E. Trouble Dip	40° 10.864' N	106° 14.349' W	8083
Dip Site	Narrows Trouble Dip	40° 11.599' N	106° 13.410' W	8125
Helibase	Granby Helibase	40° 05.396' N	105° 54.988' W	8182
Helibase	Kremmerling Helibase	40° 03.205' N	106° 22.183' W	7405
Helispot	H-110	40° 08.149' N	106° 08.929' W	9597
Helispot	H-118	40° 12.889' N	106° 13.020' W	8203
Helispot	H-122	40° 14.290' N	106° 12.589' W	8316
Helispot	H-143	40° 11.520' N	106° 08.370' W	10517
Helispot	H-17	39° 59.149' N	105° 55.556' W	8683
Helispot	H-185	40° 11.280' N	106° 13.890' W	8094
Incident Command Post	ICP	39° 59.598' N	105° 55.615' W	8727
Repeater	CMD-1	40° 02.060' N	105° 45.783' W	10271
Repeater	CMD-6	40° 19.524' N	106° 07.938' W	12158
Repeater	CMD-7	40° 02.454' N	106° 02.586' W	10031
Unimproved Landing Area		40° 13.518' N	105° 53.557' W	8895
Unimproved Landing Area		40° 06.585' N	106° 10.887' W	8587
Unimproved Landing Area	Potential LZ	40° 07.370' N	106° 10.016' W	9273