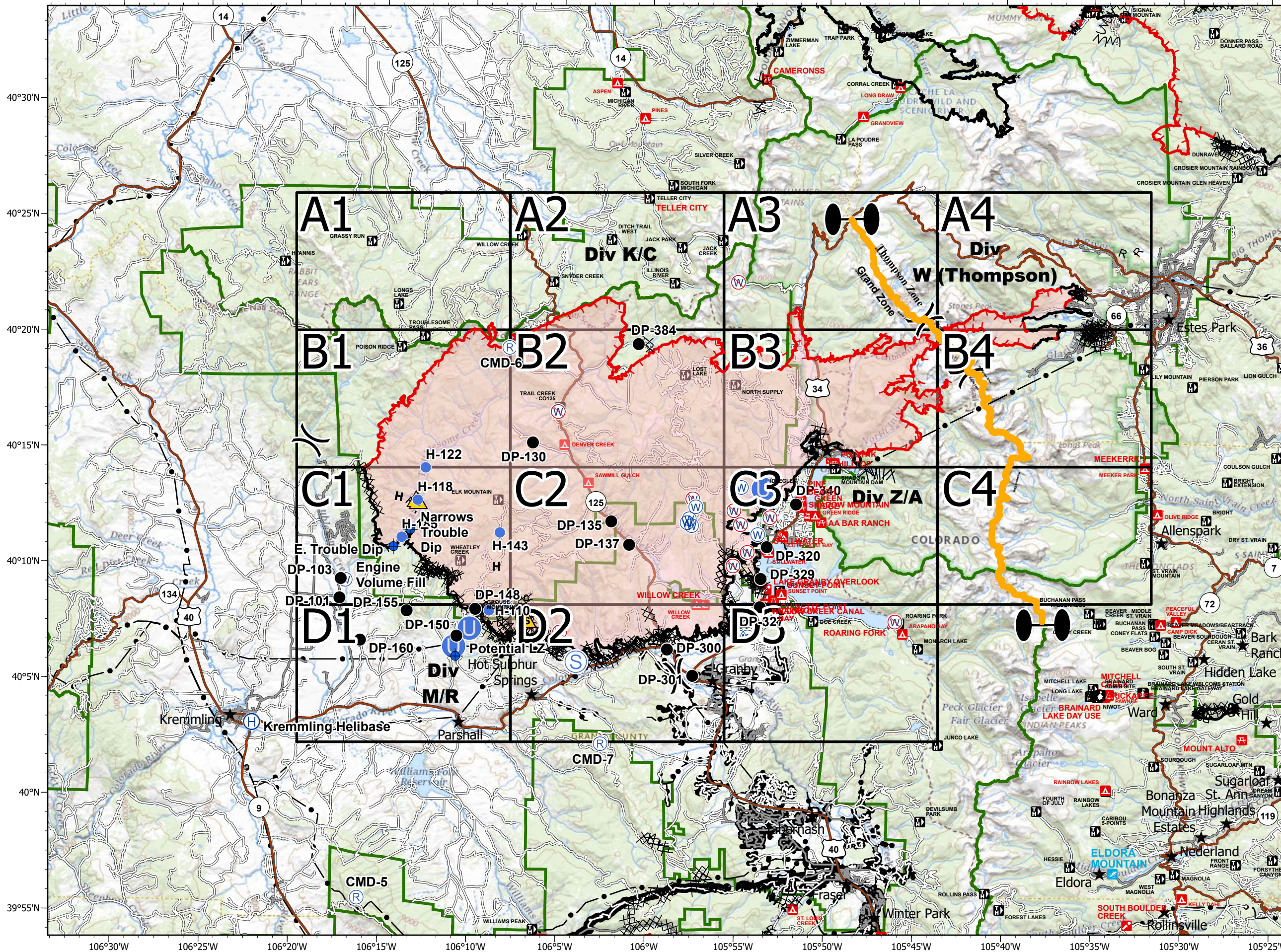
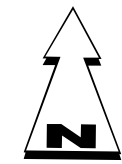


EAST TROUBLESOME - GRAND ZONE WY-MRF-000408

Fire Perimeter as of 11/04/20 1850 hrs
193,812 Total Acres
188,915 Grand Zone
4,897 Thompson Zone






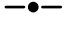







- Dip Site
 - Drop Point
 - ⊕ Helibase
 - ⊕ Unimproved Landing Area
 - ⊕ Helispot
 - ⊕ Repeater
 - ⚠ Safety Zone
 - ⊕ Staging Area
 - ⊕ Water Source
 - ⊕ Restricted Water Source
 - ⊕ Zone Break
 - ⊕ Division Break
 - Uncontrolled Fire Edge
 - Contained Line
 - ⊗ Completed Dozer Line
 - H Completed Hand Line
 - R Road as Completed Line
 - ⊕ Line Break Completed
 - ⊕ Fire Break Planned or Incomplete
 - Planned Fire Line
 - Fire Perimeter
- SITE_TYPE**
- ⊕ INFO SITE/FEE STATION
 - ⊕ CAMPGROUND
 - ⊕ GROUP CAMPGROUND
 - ⊕ TRAILHEAD
 - ⊕ PICNIC SITE
 - ⊕ GROUP PICNIC SITE
 - ⊕ BOATING SITE
 - ⊕ INTERPRETIVE SITE; INTERPRETIVE SITE (ADMIN)
 - ⊕ SKI AREA ALPINE
- Forest Powerline Data**
- PubServCo_CLC411113
 - MtnPrksElectricInc
- Utilities**
- Power Lines
 - ⊕ Gas Line
 - Zone Break



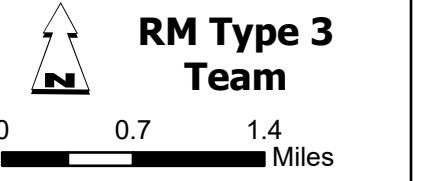
**RM Type 3
Team**



-  Repeater
-  Uncontrolled Fire Edge
-  Fire Perimeter
- Forest Powerline Data**
-  PubServCo_CLC411113
-  MtnPrksElectricInc
- Utilities**
-  Power Lines
-  Gas Line
-  Res. Structures
-  Structures Centroids
-  Structure Footprints
-  Zone Break

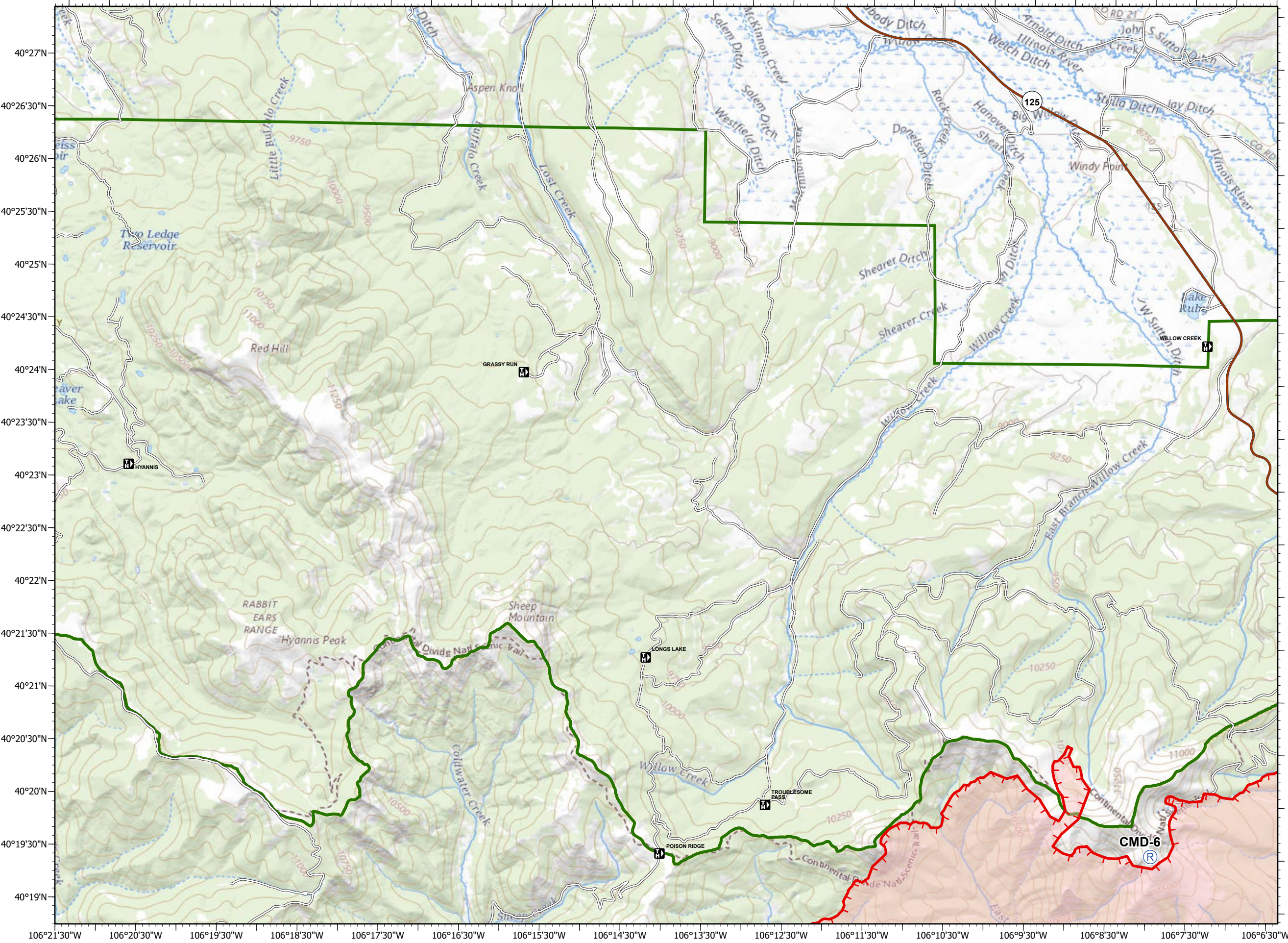
Fire Perimeter as of 11/04/20 1850 hrs
 193,812 Total Acres
 188,915 Grand Zone
 4,897 Thompson Zone

RM Type 3 Team



0 0.7 1.4 Miles

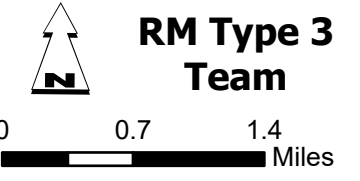
A1	A2 Div K/C	A3	A4
B1	B2	B3 Div W (Thompson)	B4
C1	C2	C3 Div Z/A	C4
D1 Div M/R	D2	D3	



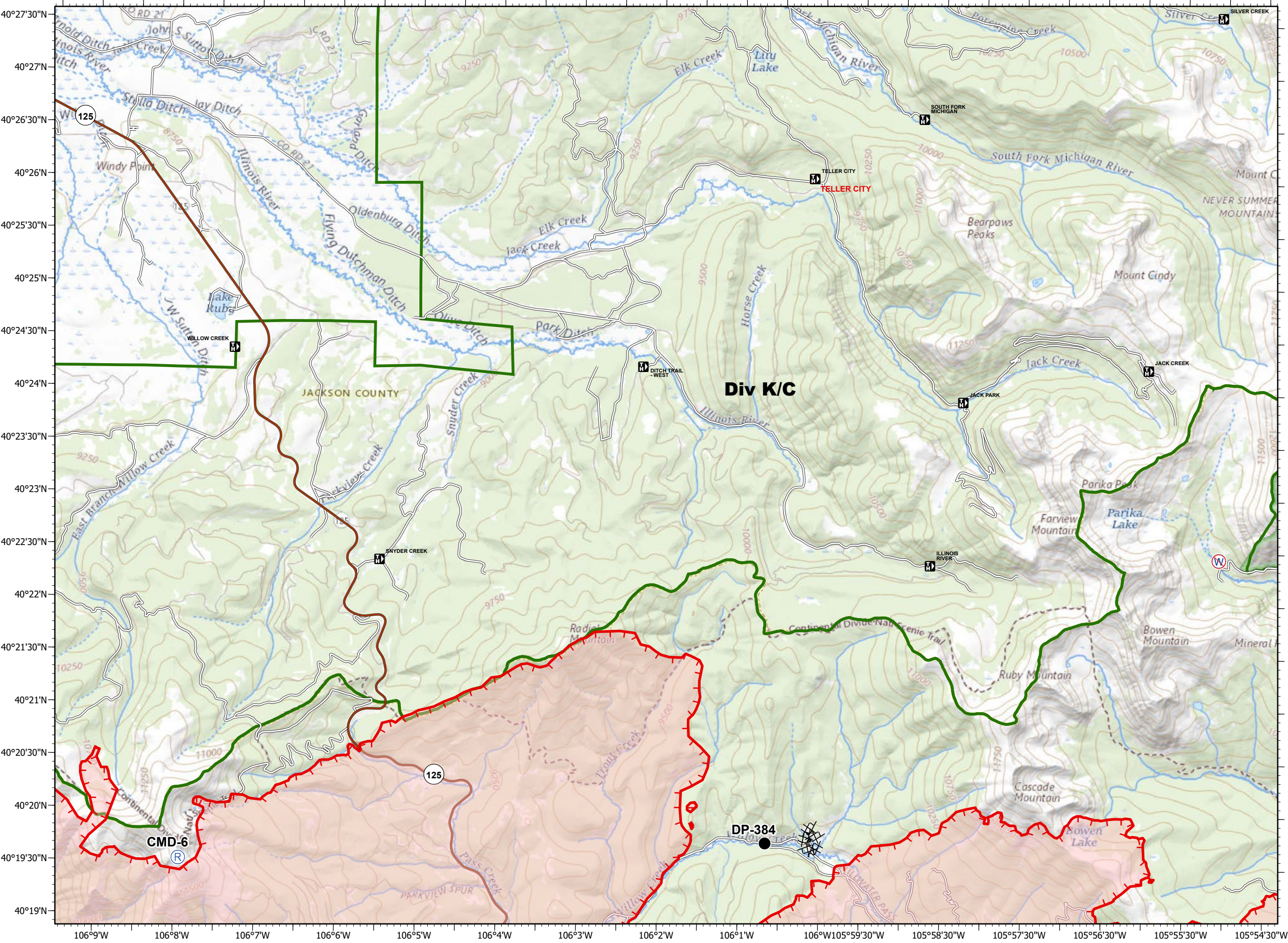
CMD-6 



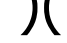










- Drop Point
 - Ⓡ Repeater
 - Ⓡ Restricted Water Source
 - Uncontrolled Fire Edge
 - XXXX Completed Dozer Line
 - Fire Perimeter
- Forest Powerline Data**
- PubServCo_CLC411113
 - MtnPrksElectricInc
- Utilities**
- Power Lines
 - ⊕ Gas Line
 - Res. Structures
 - Structures Centroids
 - Structure Footprints
 - Zone Break

Fire Perimeter as of 11/04/20 1850 hrs
 193,812 Total Acres
 188,915 Grand Zone
 4,897 Thompson Zone



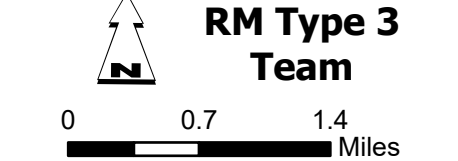
A1	A2 <small>Div K/C</small>	A3	A4 <small>Div W (Thompson)</small>
B1	B2	B3	B4
C1	C2	C3 <small>Div Z/A</small>	C4
D1 <small>Div M/R</small>	D2	D3	



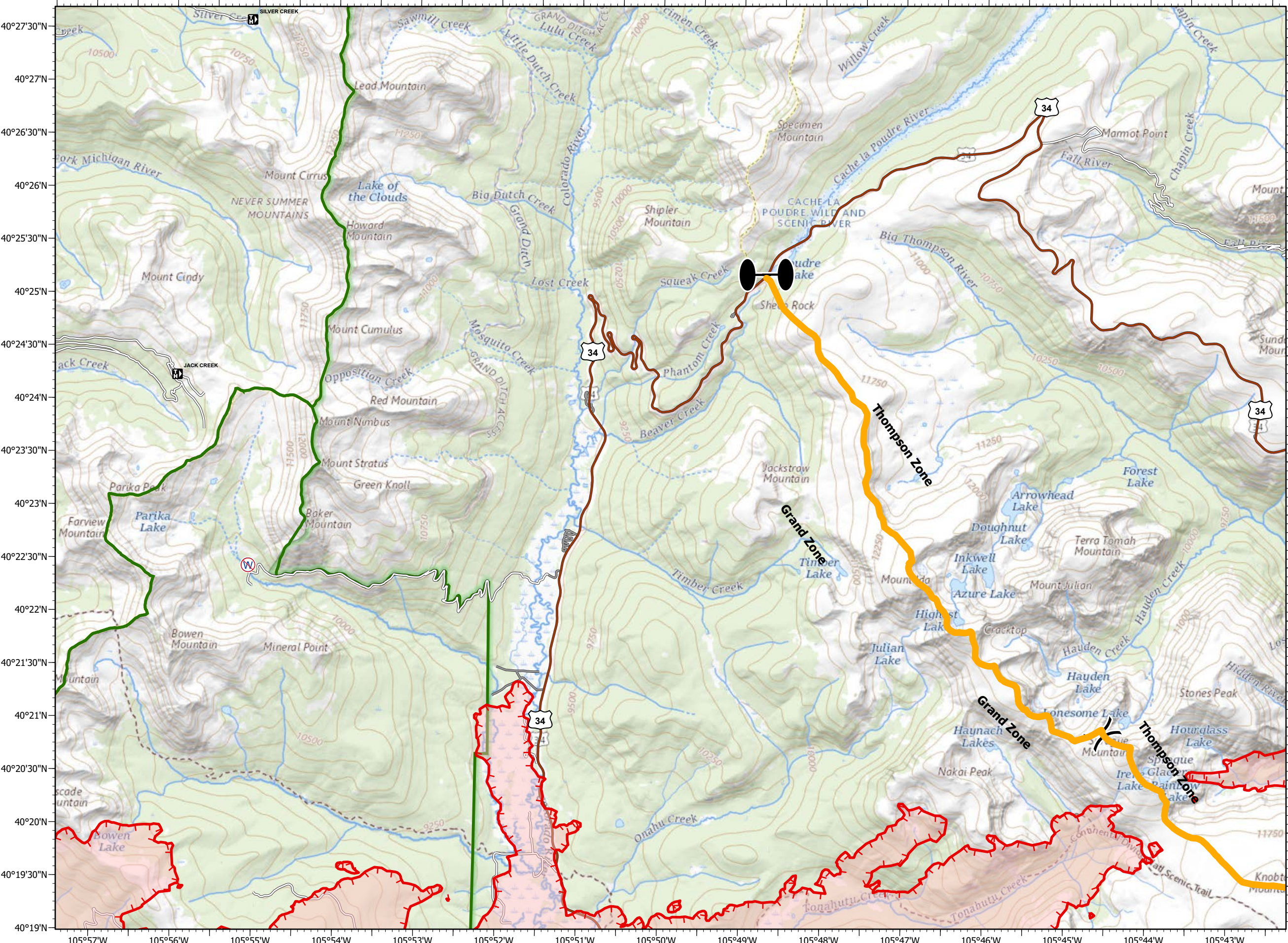
-  Restricted Water Source
-  Zone Break
-  Division Break
-  Uncontrolled Fire Edge
-  Fire Perimeter
- Forest Powerline Data**
-  PubServCo_CLC411113
-  MtnPrksElectricInc
- Utilities**
-  Power Lines
-  Gas Line
-  Res. Structures
-  Structures Centroids
-  Structure Footprints
-  Zone Break

Fire Perimeter as of 11/04/20 1850 hrs
 193,812 Total Acres
 188,915 Grand Zone
 4,897 Thompson Zone

RM Type 3 Team



A1	A2 Div K	A3	A4
B1	B2	B3	B4
C1	C2	C3	C4
D1 Div M/R	D2	D3	



EAST TROUBLESOME - GRAND ZONE

WY-MRF-000408

11/09/2020

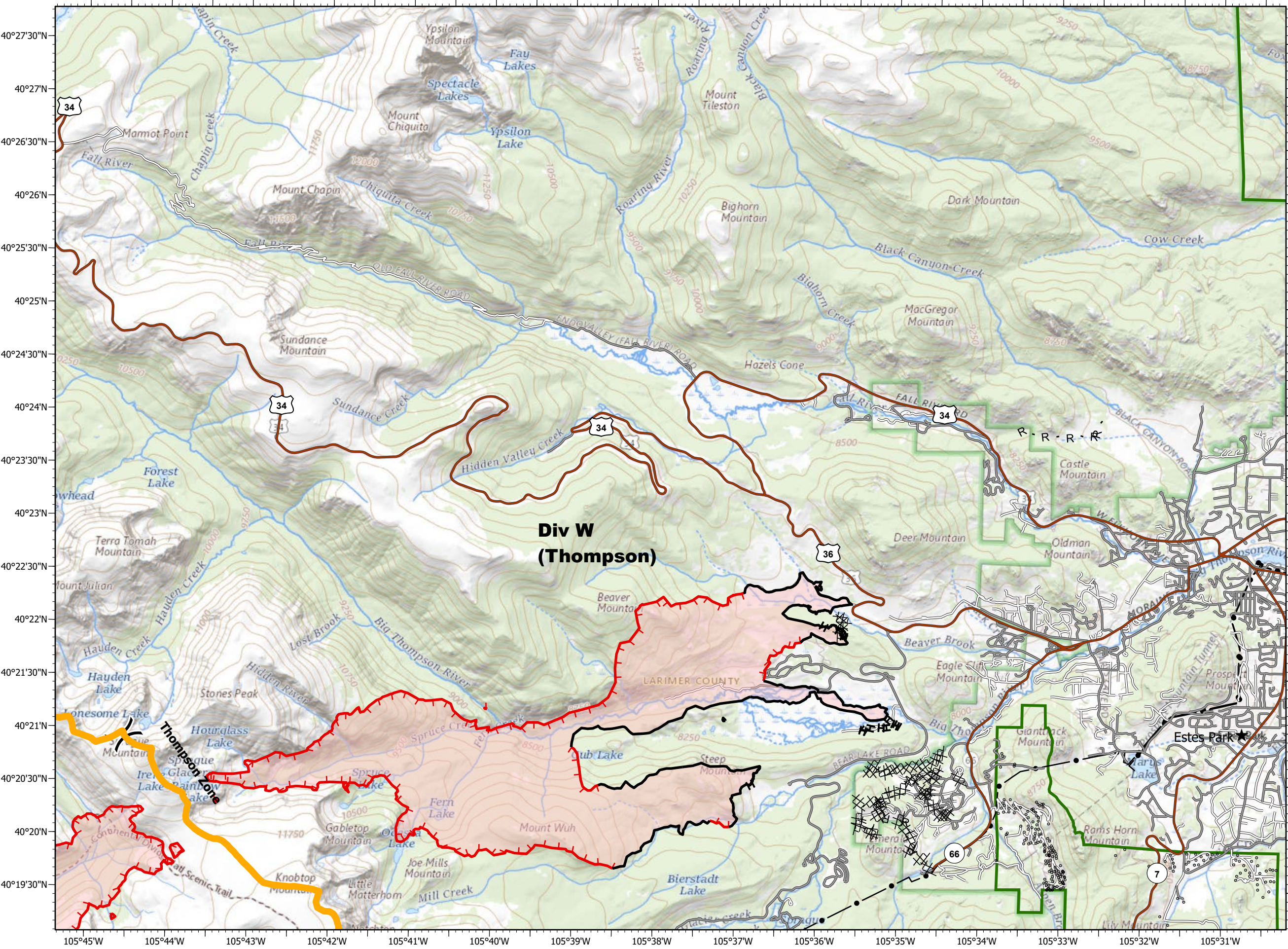
- Division Break
 - Uncontrolled Fire Edge
 - Contained Line
 - Completed Dozer Line
 - Completed Hand Line
 - Road as Completed Line
 - Fire Perimeter
- Forest Powerline Data**
- PubServCo_CLC411113
 - MtnPrksElectricInc
- Utilities**
- Power Lines
 - Gas Line
 - Res. Structures
 - Structures Centroids
 - Structure Footprints
 - Zone Break

Fire Perimeter as of 11/04/20 1850 hrs
 193,812 Total Acres
 188,915 Grand Zone
 4,897 Thompson Zone

RM Type 3 Team

0 0.7 1.4 Miles

A1	A2 Div K/C	A3	A4
B1	B2	B3	B4
C1	C2	C3 Div Z/A	C4
D1 Div M/R	D2	D3	



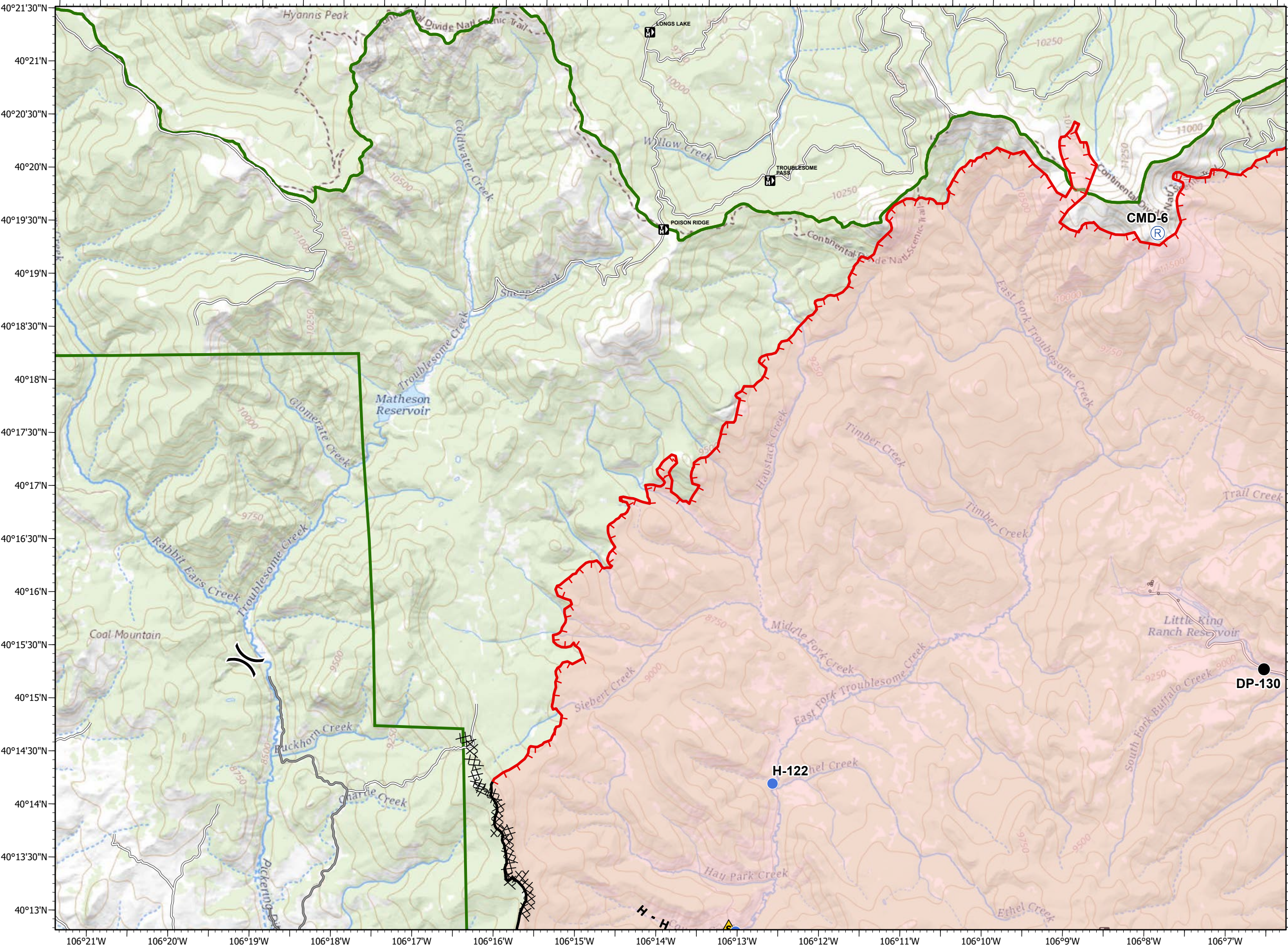
**Div W
(Thompson)**

- Drop Point
 - Helispot
 - Ⓡ Repeater
 - ▲ Safety Zone
 -) (Division Break
 - Uncontrolled Fire Edge
 - Contained Line
 - ⊗ Completed Dozer Line
 - H Completed Hand Line
 - R Road as Completed Line
 - Fire Perimeter
- Forest Powerline Data**
- PubServCo_CLC411113
 - MtnPrksElectricInc
- Utilities**
- Power Lines
 - ⊕ Gas Line
 - Res. Structures
 - Structures Centroids
 - Structure Footprints
 - Zone Break

Fire Perimeter as of 11/04/20 1850 hrs
 193,812 Total Acres
 188,915 Grand Zone
 4,897 Thompson Zone

RM Type 3 Team

A1	A2 Div K/C	A3	A4
B1	B2	B3 Div W (Thompson)	B4
C1	C2	C3 Div Z/A	C4
D1 Div M/R	D2	D3	

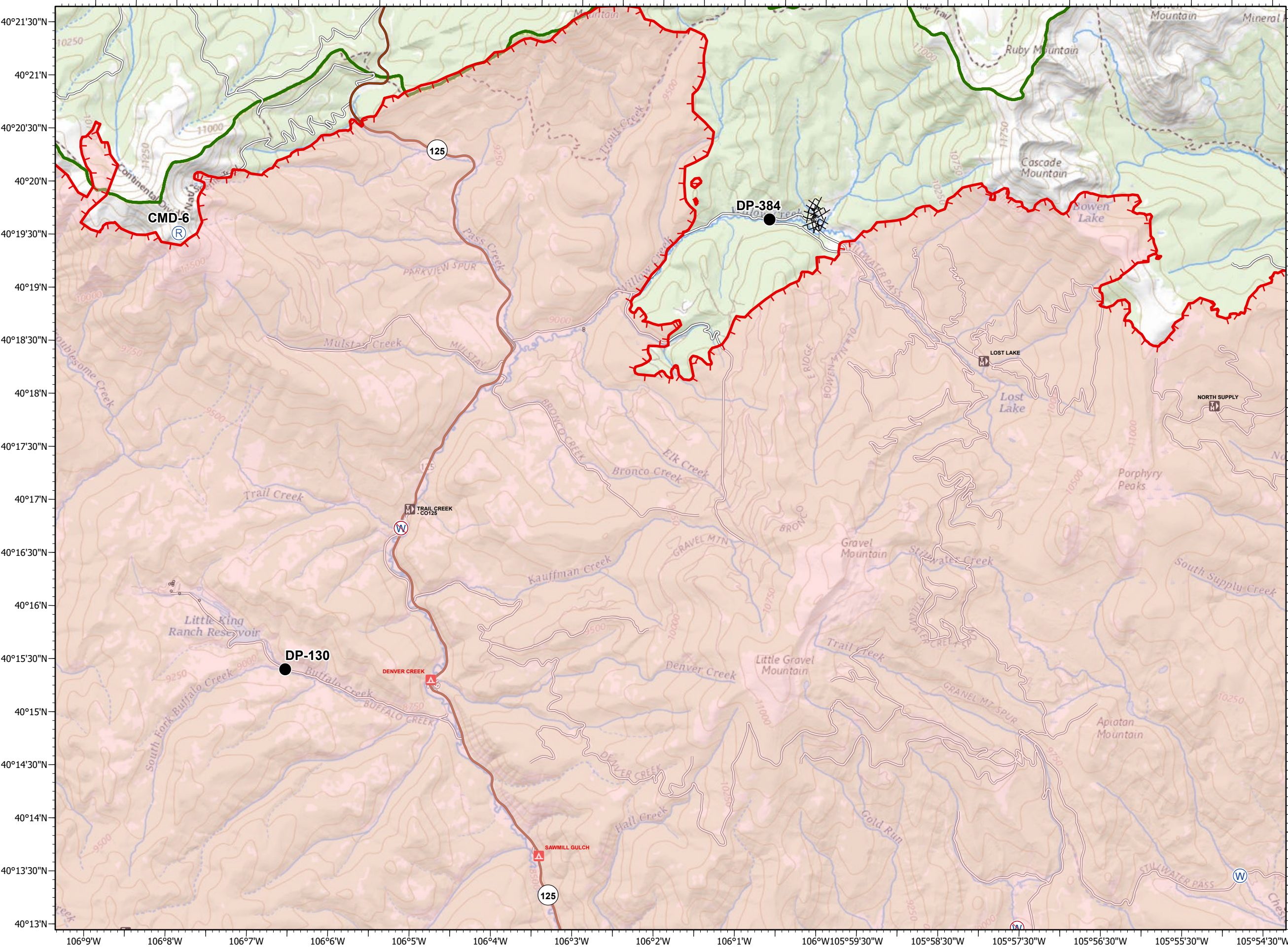


- Drop Point
 - Ⓡ Repeater
 - Ⓜ Water Source
 - Ⓜ Restricted Water Source
 - Uncontrolled Fire Edge
 - ⊗ Completed Dozer Line
 - Fire Perimeter
- Forest Powerline Data**
- PubServCo_CLC411113
 - MtnPrksElectricInc
- Utilities**
- Power Lines
 - ⊕ Gas Line
 - Res. Structures
 - Structures Centroids
 - Structure Footprints
 - ▬ Zone Break

Fire Perimeter as of 11/04/20 1850 hrs
 193,812 Total Acres
 188,915 Grand Zone
 4,897 Thompson Zone

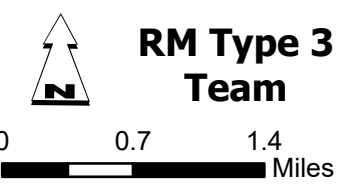
RM Type 3 Team

A1	A2 Div K/C	A3	A4
B1	B2	B3 Div W (Thompson)	B4
C1	C2	C3 Div Z/A	C4
D1 Div M/R	D2	D3	

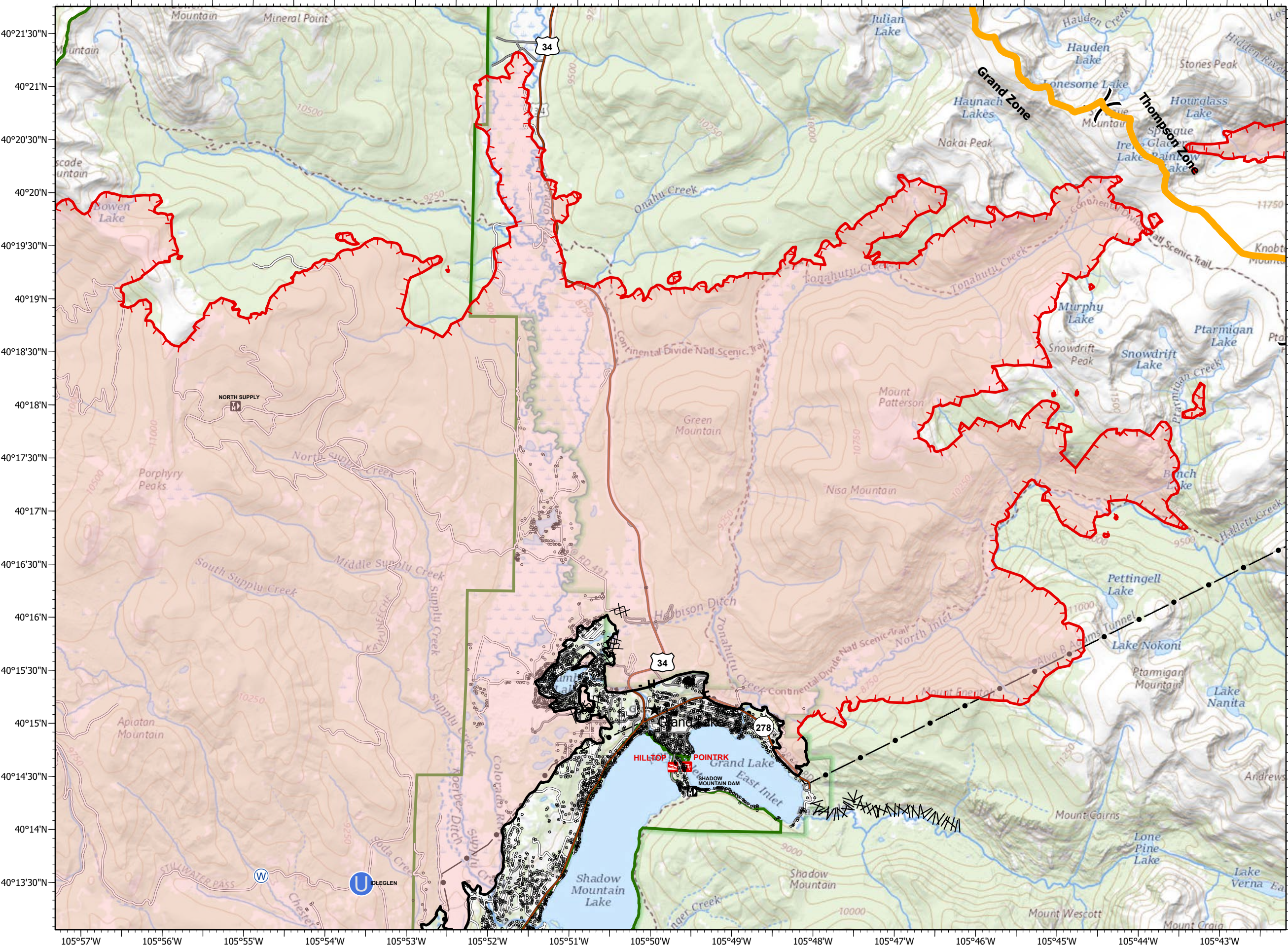


- Unimproved Landing Area
 - ⊙ Water Source
 - ⊙ Restricted Water Source
 -) (Division Break
 - ┌ ┐ └ ┘ Uncontrolled Fire Edge
 - Contained Line
 - ⊗ Completed Dozer Line
 - H Completed Hand Line
 - Λ Line Break Completed
 - Fire Perimeter
- Forest Powerline Data**
- PubServCo_CLC411113
 - MtnPrksElectricInc
- Utilities**
- Power Lines
 - ⊙ Gas Line
 - Res. Structures
 - Structures Centroids
 - Structure Footprints
 - Zone Break

Fire Perimeter as of 11/04/20 1850 hrs
 193,812 Total Acres
 188,915 Grand Zone
 4,897 Thompson Zone



A1	A2 <small>Div K/C</small>	A3	A4
B1	B2	B3	B4
C1	C2	C3 <small>Div Z/A</small>	C4
D1 <small>Div M/R</small>	D2 <small>(</small>	D3	



EAST TROUBLESOME - GRAND ZONE

WY-MRF-000408

11/09/2020

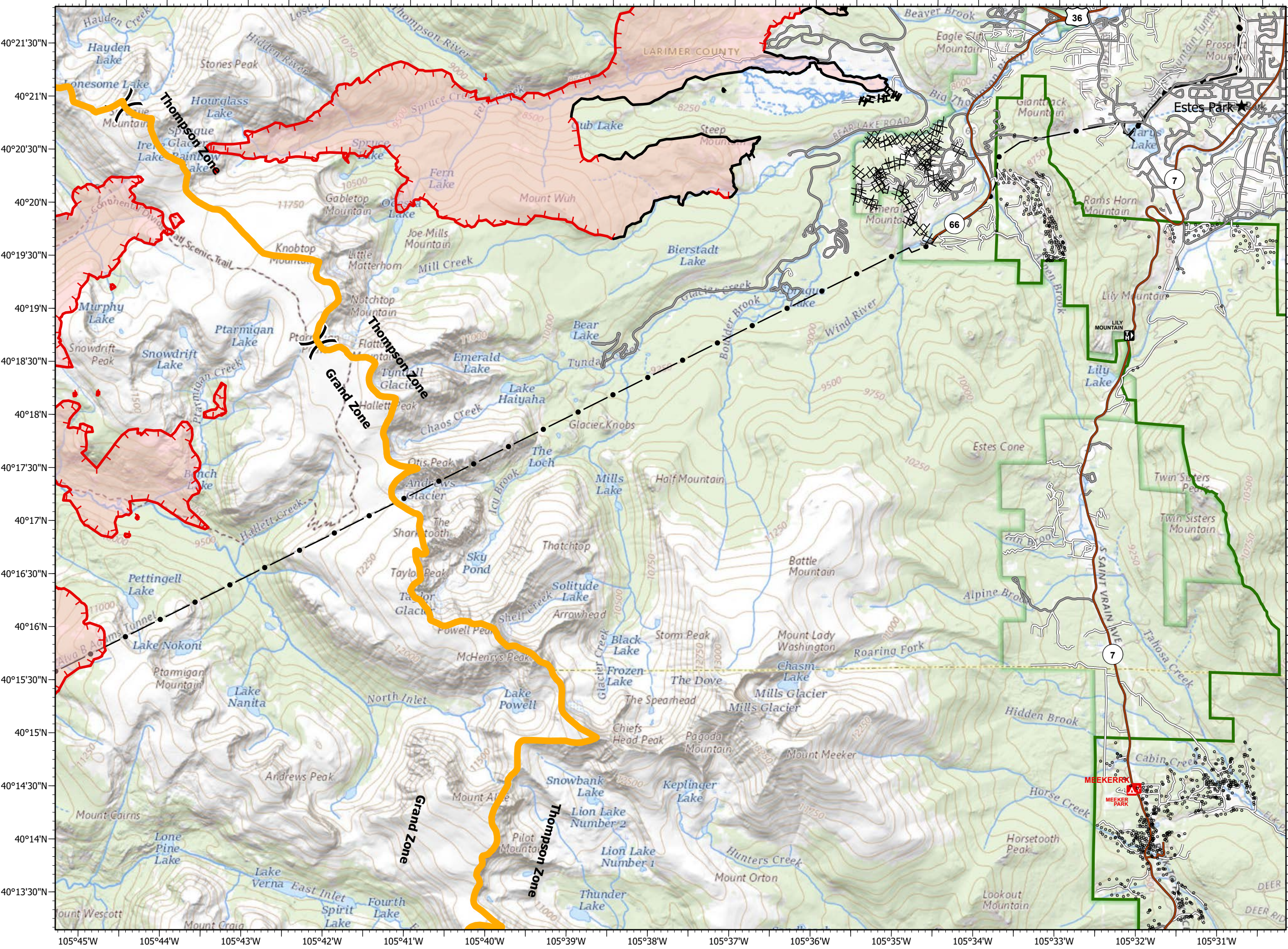
- Division Break
 - Uncontrolled Fire Edge
 - Contained Line
 - Completed Dozer Line
 - Completed Hand Line
 - Road as Completed Line
 - Fire Perimeter
- Forest Powerline Data**
- PubServCo_CLC411113
 - MtnPrksElectricInc
- Utilities**
- Power Lines
 - Gas Line
 - Res. Structures
 - Structures Centroids
 - Structure Footprints
 - Zone Break

Fire Perimeter as of 11/04/20 1850 hrs
 193,812 Total Acres
 188,915 Grand Zone
 4,897 Thompson Zone

RM Type 3 Team

0 0.7 1.4 Miles

A1	A2 Div K/C	A3	A4 Div W (Thompson)
B1	B2	B3	B4
C1	C2	C3 Div Z/A	C4
D1 Div M/R	D2	D3	



EAST TROUBLESOME - GRAND ZONE

WY-MRF-000408

11/09/2020

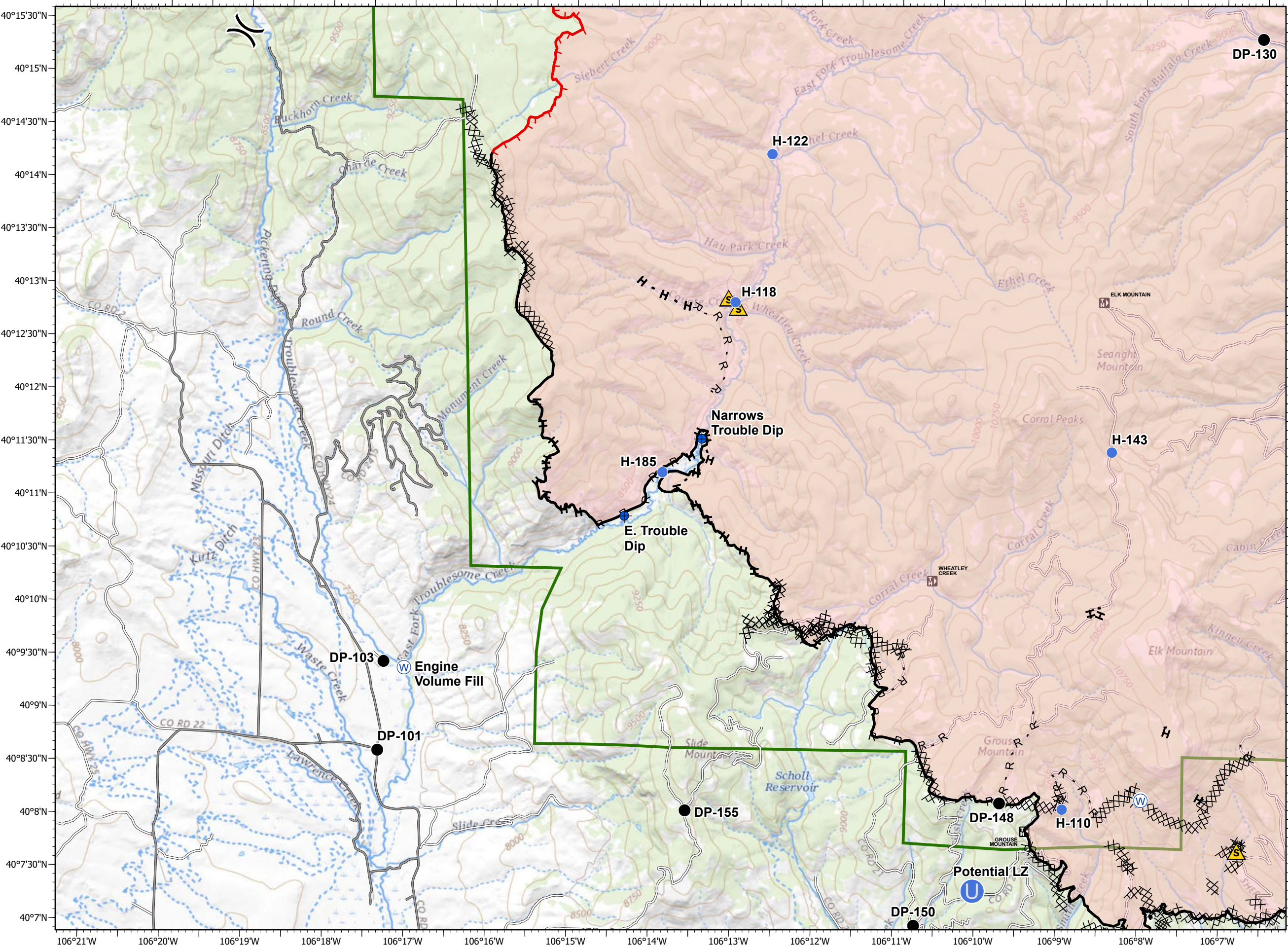
- Dip Site
 - Drop Point
 - Unimproved Landing Area
 - Helispot
 - Safety Zone
 - Water Source
 - Division Break
 - Uncontrolled Fire Edge
 - Contained Line
 - Completed Dozer Line
 - Completed Hand Line
 - Road as Completed Line
 - Fire Perimeter
- Forest Powerline Data**
- PubServCo_CLC411113
 - MtnPrksElectricInc
- Utilities**
- Power Lines
 - Gas Line
 - Res. Structures
 - Structures Centroids
 - Structure Footprints
 - Zone Break

Fire Perimeter as of 11/04/20 1850 hrs
 193,812 Total Acres
 188,915 Grand Zone
 4,897 Thompson Zone

RM Type 3 Team

0 0.7 1.4
Miles

A1	A2 <small>Div K/C</small>	A3	A4 <small>Div W (Thompson)</small>
B1	B2	B3 <small>Div Z/A</small>	B4
C1	C2	C3	C4
D1 <small>Div M/R</small>	D2 <small>(</small>	D3	



EAST TROUBLESOME - GRAND ZONE

WY-MRF-000408

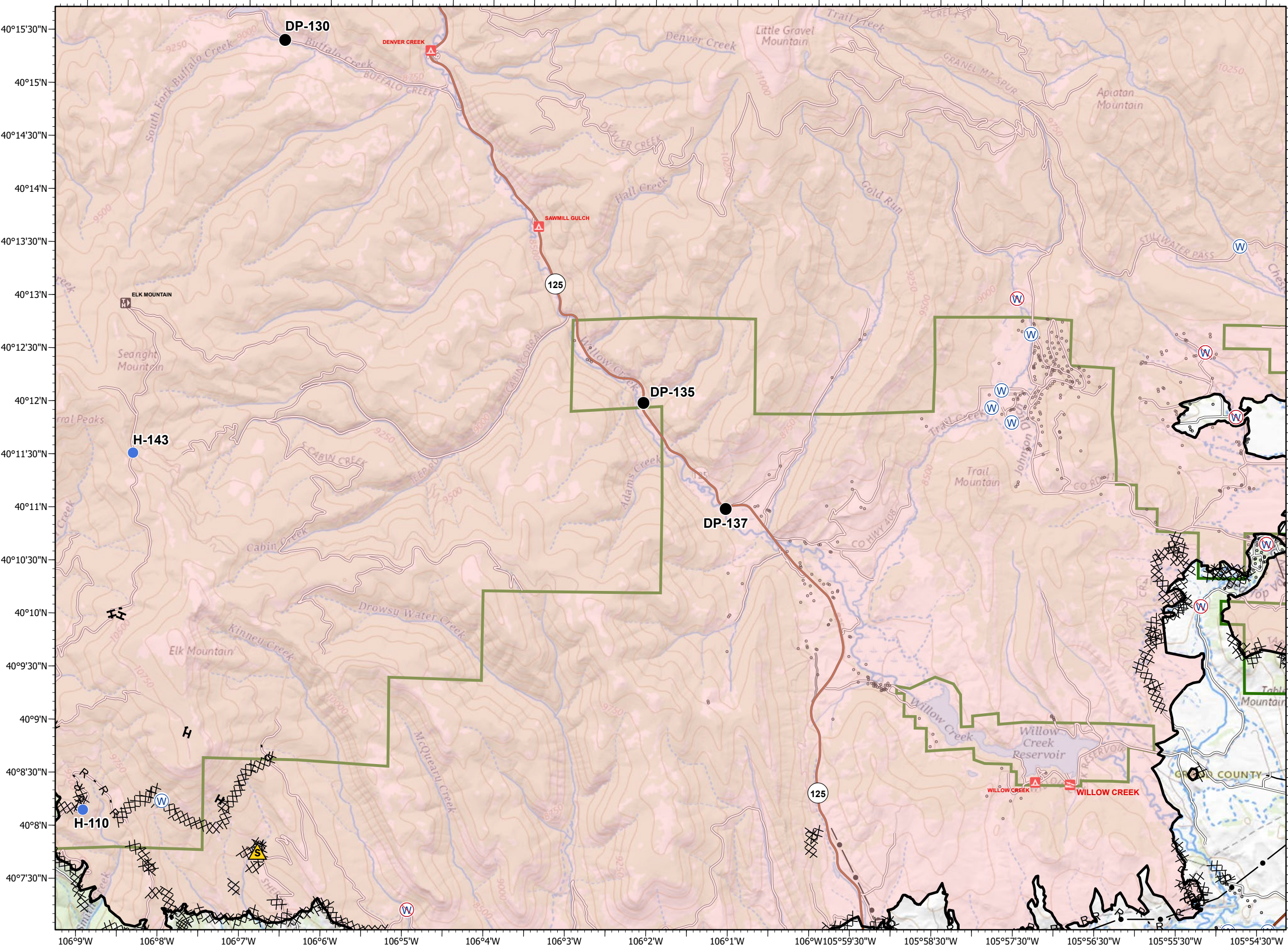
11/09/2020

- Drop Point
 - Helispot
 - ▲ Safety Zone
 - ⊕ Water Source
 - ⊖ Restricted Water Source
 - Contained Line
 - ⊗ Completed Dozer Line
 - H Completed Hand Line
 - R Road as Completed Line
 - Fire Perimeter
- Forest Powerline Data**
- PubServCo_CLC411113
 - MtnPrksElectricInc
- Utilities**
- Power Lines
 - ⊕ Gas Line
 - Res. Structures
 - Structures Centroids
 - Structure Footprints
 - ▬ Zone Break

Fire Perimeter as of 11/04/20 1850 hrs
 193,812 Total Acres
 188,915 Grand Zone
 4,897 Thompson Zone

RM Type 3 Team

A1	A2 Div K/C	A3	A4 Div W (Thompson)
B1	B2	B3 Div Z/A	B4
C1	C2	C3	C4
D1 Div M/R	D2	D3	



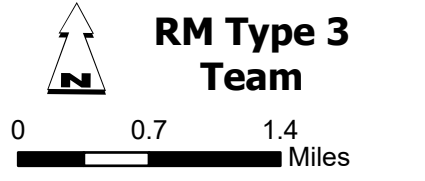
106°9'W 106°8'W 106°7'W 106°6'W 106°5'W 106°4'W 106°3'W 106°2'W 106°1'W 105°59'30"W 105°58'30"W 105°57'30"W 105°56'30"W 105°55'30"W 105°54'30"W

- Drop Point
- Unimproved Landing Area
- Ⓜ Water Source
- Ⓜ Restricted Water Source
- Uncontrolled Fire Edge
- Contained Line
- ⊗ Completed Dozer Line
- H Completed Hand Line
- R Road as Completed Line
- Λ Line Break Completed
- Fire Perimeter

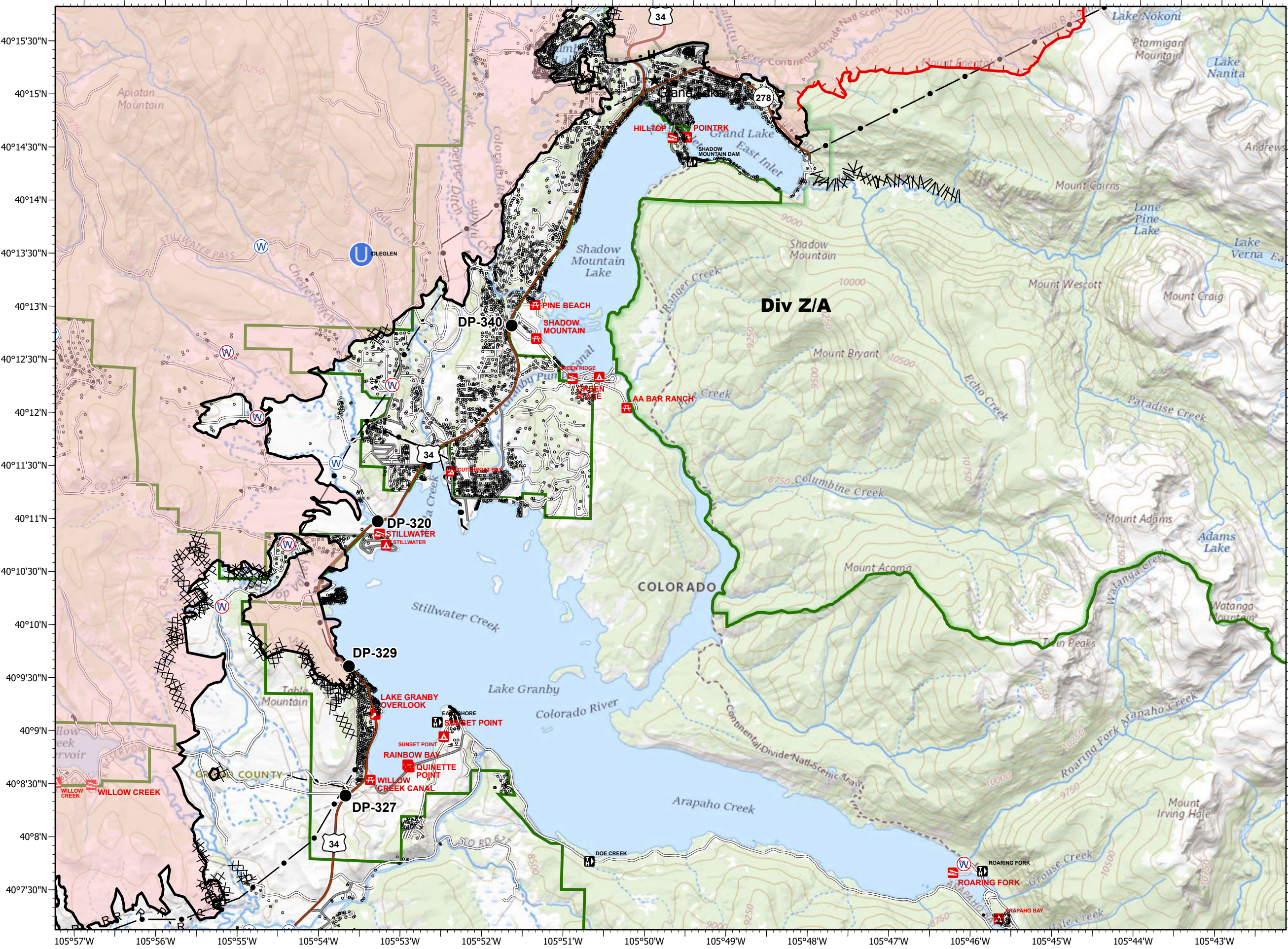
- Forest Powerline Data**
- PubServCo_CLC411113
 - MtnPrksElectricInc




- Utilities**
- Power Lines
 - ⊕ Gas Line
 - Res. Structures
 - Structures Centroids
 - Structure Footprints
 - Zone Break

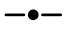
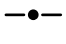
Fire Perimeter as of 11/04/20 1850 hrs
 193,812 Total Acres
 188,915 Grand Zone
 4,897 Thompson Zone









A1	A2 Div K/C	A3	A4
B1	B2	B3	B4
C1	C2	C3	C4
D1 Div M/R	D2	D3	



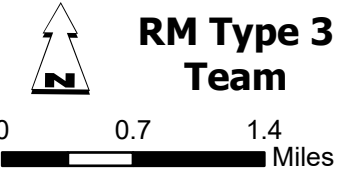
-  Zone Break
-  Uncontrolled Fire Edge
-  Fire Perimeter

- Forest Powerline Data**
-  PubServCo_CLC411113
 -  MtnPrksElectricInc

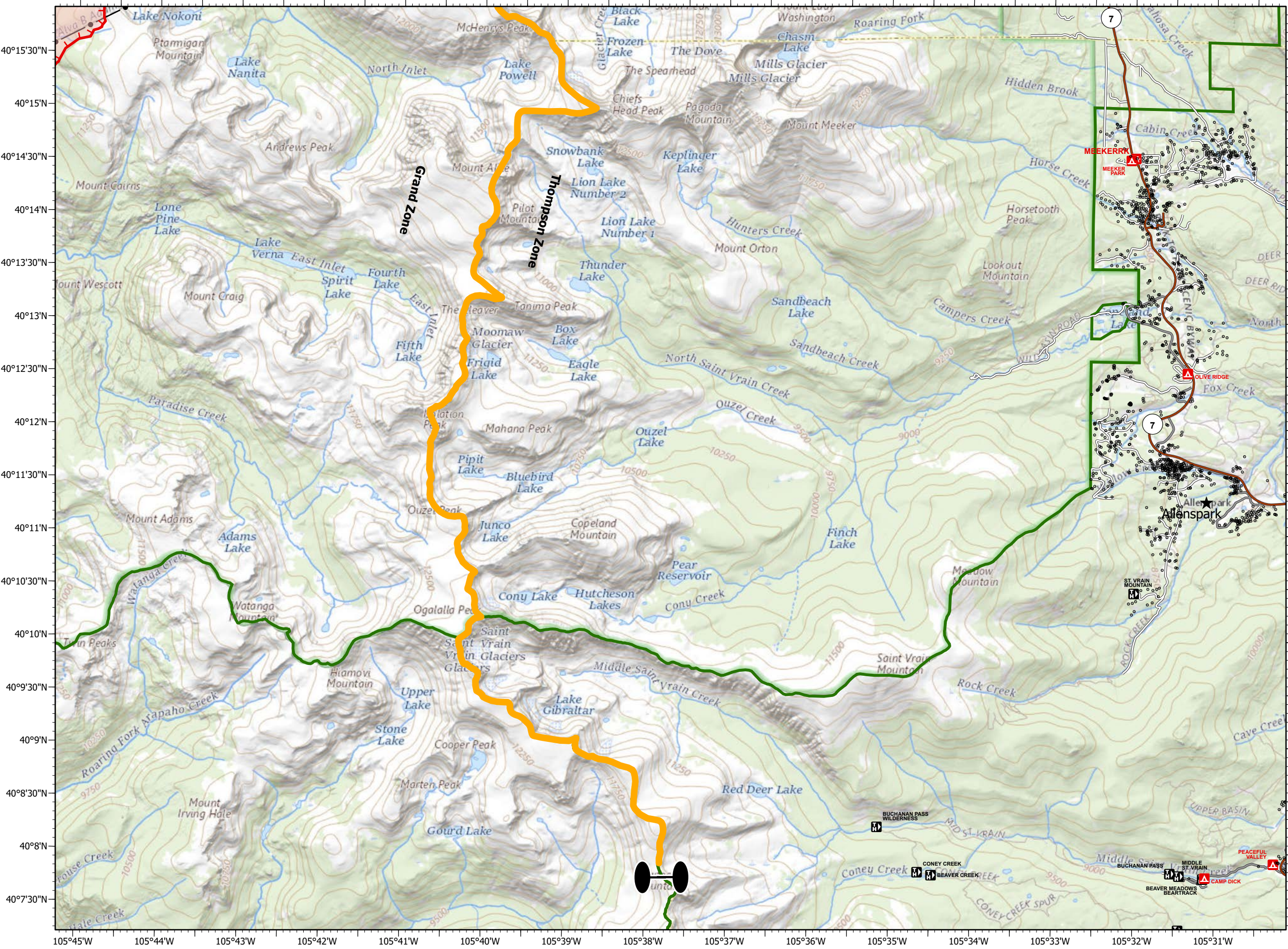
- Utilities**
-  Power Lines
 -  Gas Line
 -  Res. Structures
 -  Structures Centroids
 -  Structure Footprints
 -  Zone Break

Fire Perimeter as of 11/04/20 1850 hrs
 193,812 Total Acres
 188,915 Grand Zone
 4,897 Thompson Zone

RM Type 3 Team



A1	A2 Div K/C	A3	A4 Div W (Thompson)
B1	B2	B3	B4
C1	C2	C3 Div Z	C4
D1 Div M/R	D2	D3	



Legend

- Dip Site
- Drop Point
- Unimproved Landing Area
- Helipot
- Safety Zone
- Water Source
- Contained Line
- Completed Dozer Line
- Completed Hand Line
- Road as Completed Line
- Fire Perimeter

Forest Powerline Data

- PubServCo_CLC411113
- MtnPrksElectricInc

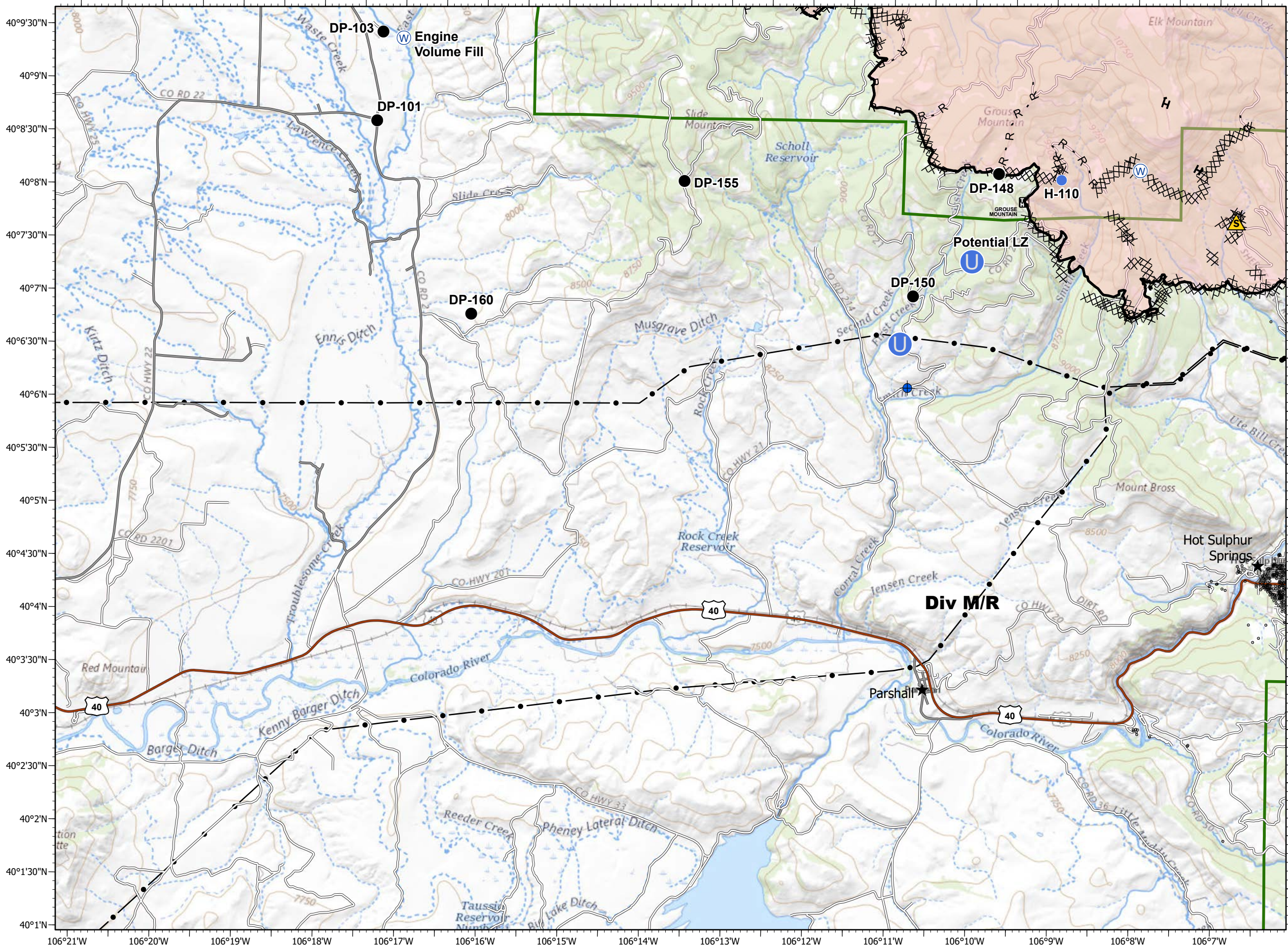
Utilities

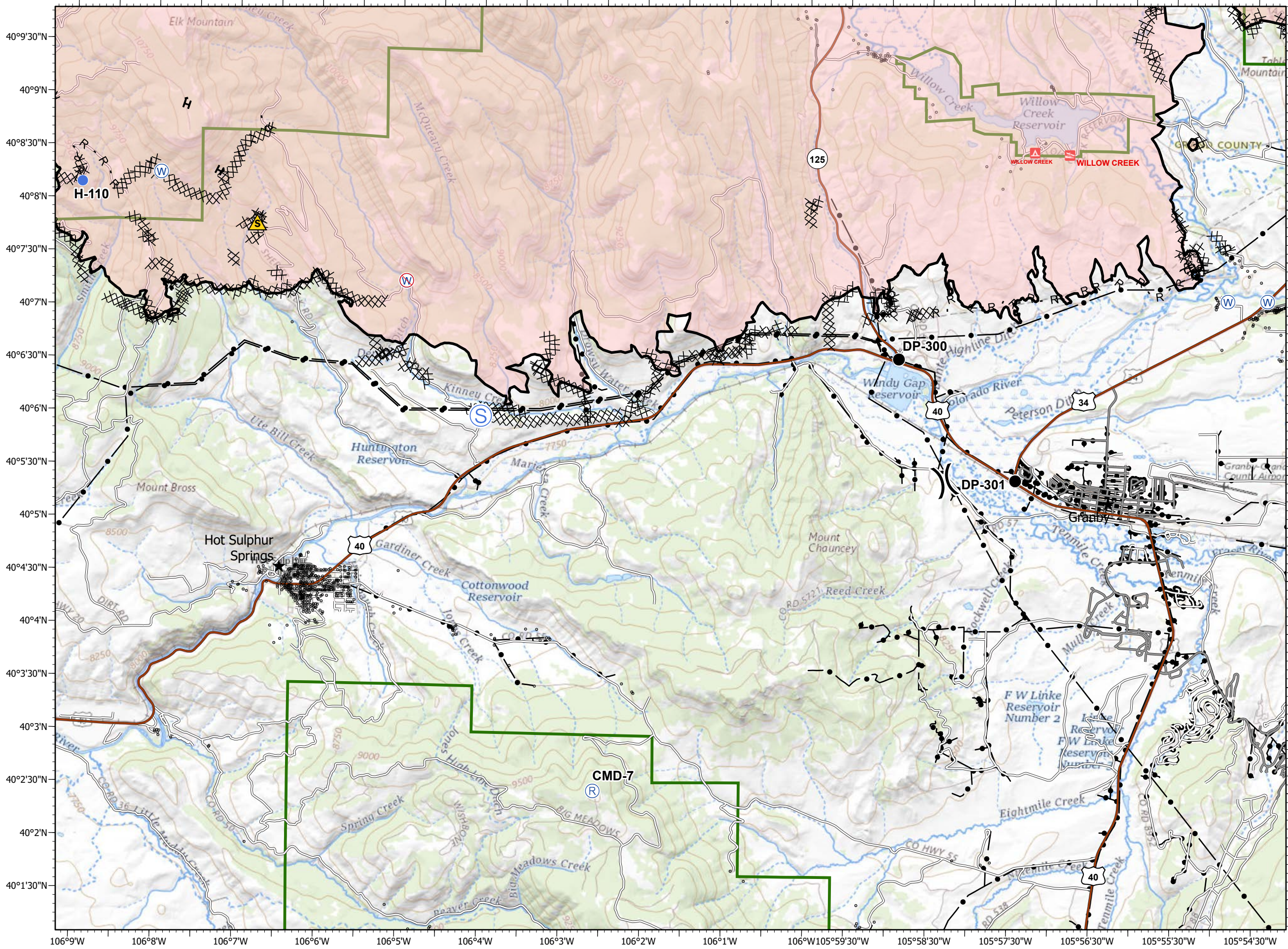
- Power Lines
- Gas Line
- Res. Structures
- Structures Centroids
- Structure Footprints
- Zone Break

Fire Perimeter as of 11/04/20 1850 hrs
 193,812 Total Acres
 188,915 Grand Zone
 4,897 Thompson Zone

RM Type 3 Team

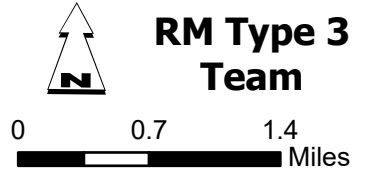
A1	A2 Div K/C	A3	A4
B1	B2	B3 Div W (Thompson)	B4
C1	C2	C3 Div Z/A	C4
D1 Div M/R	D2	D3	



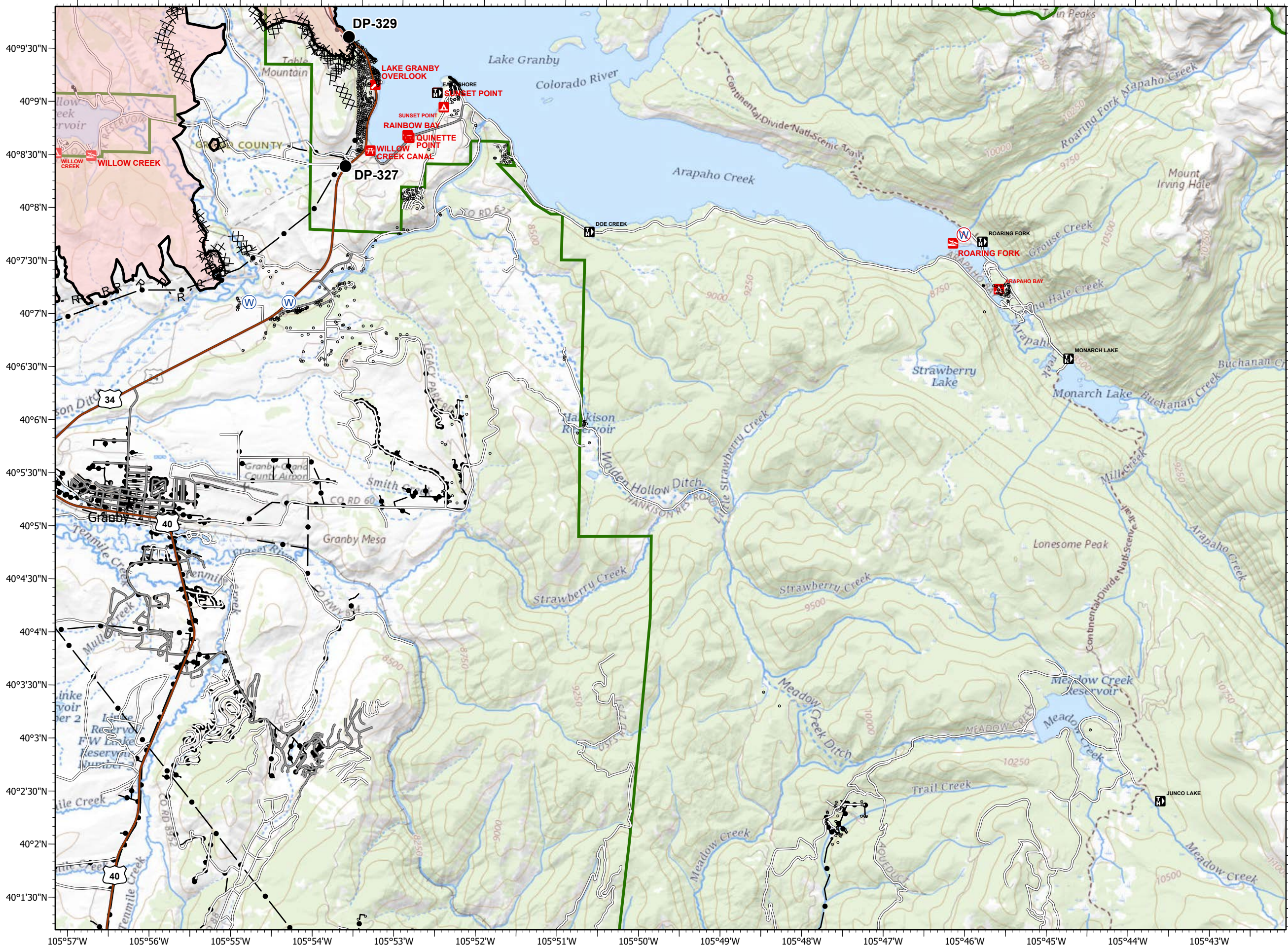


- Drop Point
- Helispot
- Ⓡ Repeater
- ▲ Safety Zone
- Ⓢ Staging Area
- Ⓜ Water Source
- Ⓜ Restricted Water Source
-) (Division Break
- Contained Line
- ⓧ Completed Dozer Line
- H Completed Hand Line
- R Road as Completed Line
- Fire Perimeter
- Forest Powerline Data
 - PubServCo_CLC411113
 - MtnPrksElectricInc
- Utilities
 - Power Lines
 - Gas Line
 - Res. Structures
 - Structures Centroids
 - Structure Footprints
- ▬ Zone Break

Fire Perimeter as of 11/04/20 1850 hrs
 193,812 Total Acres
 188,915 Grand Zone
 4,897 Thompson Zone



A1	A2 Div K/C	A3	A4
B1	B2	B3	B4
C1	C2	C3	C4
D1 Div W/R	D2	D3	

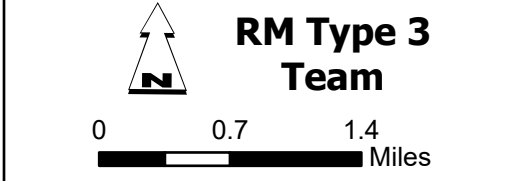


- Drop Point
- ⊕ Water Source
- ⊖ Restricted Water Source
- Contained Line
- ⊗ Completed Dozer Line
- H Completed Hand Line
- R Road as Completed Line
- Fire Perimeter

- Forest Powerline Data**
- PubServCo_CLC411113
 - MtnPrksElectricInc

- Utilities**
- Power Lines
 - ⊕ Gas Line
 - Res. Structures
 - Structures Centroids
 - Structure Footprints
 - ▬ Zone Break

Fire Perimeter as of 11/04/20 1850 hrs
 193,812 Total Acres
 188,915 Grand Zone
 4,897 Thompson Zone



A1	A2 Div K/C	A3	A4
B1	B2	B3 (Thompson)	B4
C1	C2	C3 Div Z/A	C4
D1 Div M/R	D2	D3	