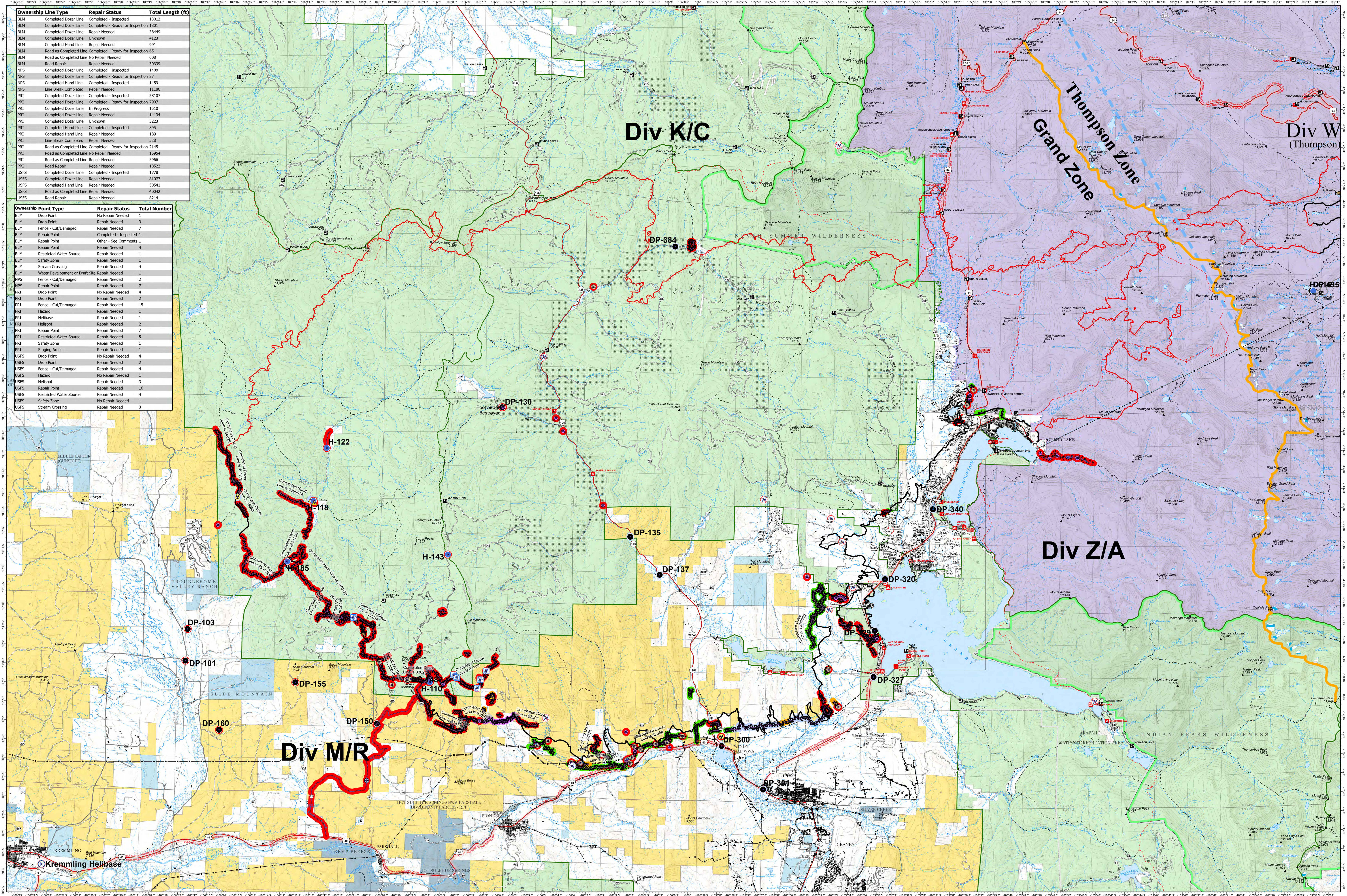


# SUPPRESSION REPAIR - EAST TROUBLESOME - GRAND ZONE

NOVEMBER 9, 2020



Ownership Line Type	Repair Status	Total Length (ft)
BLM Completed Dozer Line	Completed - Inspected	13012
BLM Completed Dozer Line	Completed - Ready for Inspection	1801
BLM Completed Dozer Line	Repair Needed	38449
BLM Completed Dozer Line	Unknown	4123
BLM Completed Hand Line	Repair Needed	991
BLM Road as Completed Line	Completed - Ready for Inspection	65
BLM Road as Completed Line	No Repair Needed	608
BLM Road Repair	Repair Needed	30339
NPS Completed Dozer Line	Completed - Inspected	1408
NPS Completed Dozer Line	Completed - Ready for Inspection	27
NPS Completed Hand Line	Completed - Inspected	1469
NPS Line Break Completed	Repair Needed	11186
PRI Completed Dozer Line	Completed - Inspected	58107
PRI Completed Dozer Line	Completed - Ready for Inspection	7907
PRI Completed Dozer Line	In Progress	1510
PRI Completed Dozer Line	Repair Needed	14134
PRI Unknown	Unknown	3223
PRI Completed Hand Line	Completed - Inspected	895
PRI Completed Hand Line	Repair Needed	189
PRI Line Break Completed	Repair Needed	528
PRI Road as Completed Line	Completed - Ready for Inspection	2145
PRI Road as Completed Line	No Repair Needed	19954
PRI Road as Completed Line	Repair Needed	5966
PRI Road Repair	Repair Needed	18522
USFS Completed Dozer Line	Completed - Inspected	1778
USFS Completed Dozer Line	Repair Needed	81077
USFS Completed Hand Line	Repair Needed	50541
USFS Road as Completed Line	Repair Needed	40942
USFS Road Repair	Repair Needed	8214

Ownership Point Type	Repair Status	Total Number
BLM Drop Point	No Repair Needed	1
BLM Drop Point	Repair Needed	3
BLM Fence - Cut/Damaged	Repair Needed	7
BLM Repair Point	Completed - Inspected	1
BLM Repair Point	Other - See Comments	1
BLM Repair Point	Repair Needed	4
BLM Restricted Water Source	Repair Needed	1
BLM Safety Zone	Repair Needed	1
BLM Stream Crossing	Repair Needed	4
BLM Water Development or Draft Site	Repair Needed	1
NPS Fence - Cut/Damaged	Repair Needed	2
NPS Repair Point	Repair Needed	7
PRI Drop Point	No Repair Needed	4
PRI Drop Point	Repair Needed	2
PRI Fence - Cut/Damaged	Repair Needed	15
PRI Hazard	Repair Needed	1
PRI Heliport	Repair Needed	1
PRI Heliport	Repair Needed	2
PRI Repair Point	Repair Needed	7
PRI Restricted Water Source	Repair Needed	5
PRI Safety Zone	Repair Needed	1
PRI Staging Area	Repair Needed	1
USFS Drop Point	No Repair Needed	4
USFS Drop Point	Repair Needed	2
USFS Fence - Cut/Damaged	Repair Needed	4
USFS Hazard	No Repair Needed	1
USFS Heliport	Repair Needed	3
USFS Repair Point	Repair Needed	16
USFS Restricted Water Source	Repair Needed	4
USFS Safety Zone	No Repair Needed	1
USFS Stream Crossing	Repair Needed	3

**EAST TROUBLESOME - GRAND ZONE**  
**WY-MRF-000408**  
 11/04/20 1850 hrs  
 193,812 Total Acres  
 188,915 Grand Zone  
 4,897 Thompson Zone

● Drop Point	▲ Repair Point	⊕ Water Development or Draft Site	— Road as Completed Line	▨ BLM CO Mining Claims	● Repair Status Point	● Repair Status Line	▨ Surface Management Agency (Outline)	▨ State, County, City, Areas
⊕ Fence - Cut/Damaged	▲ Safety Zone	— Uncontrolled Fire Edge	— Line Break Completed	— ZoneBreak	● Completed - Inspected	● Completed - Inspected	▨ Bureau of Land Management	▨ Bankhead-Jones Land Use Lands
⊕ Hazard	▲ Staging Area	— Contained Line	— Temporary Flight Restriction	— Repair Line	● In Use - Fire Management	● In Use - Fire Management	▨ Bureau of Reclamation	▨ US Fish and Wildlife Service
⊕ Heliport	▲ Stream Crossing	— Completed Dozer Line	— Road Repair	— Road Repair	● Completed - Ready for Inspection	● Completed - Ready for Inspection	▨ US Forest Service	▨ National Park Service
⊕ Heliport	▲ Restricted Water Source	— Completed Hand Line			● In Progress	● In Progress	▨ Military Reservation	▨ National Park Service
					● Repair Needed	● Repair Needed	▨ Indian Reservation	▨ National Park Service
					● No Repair Needed	● No Repair Needed	▨ National Grasslands	▨ National Park Service
					● Other - See Comments	● Other - See Comments	▨ National Park Service	▨ National Park Service
					● Unknown	● Unknown	▨ Private	▨ Private
							▨ State	▨ State

Map Projection: UTM Zone 13, NAD83

RM Type 3 Team