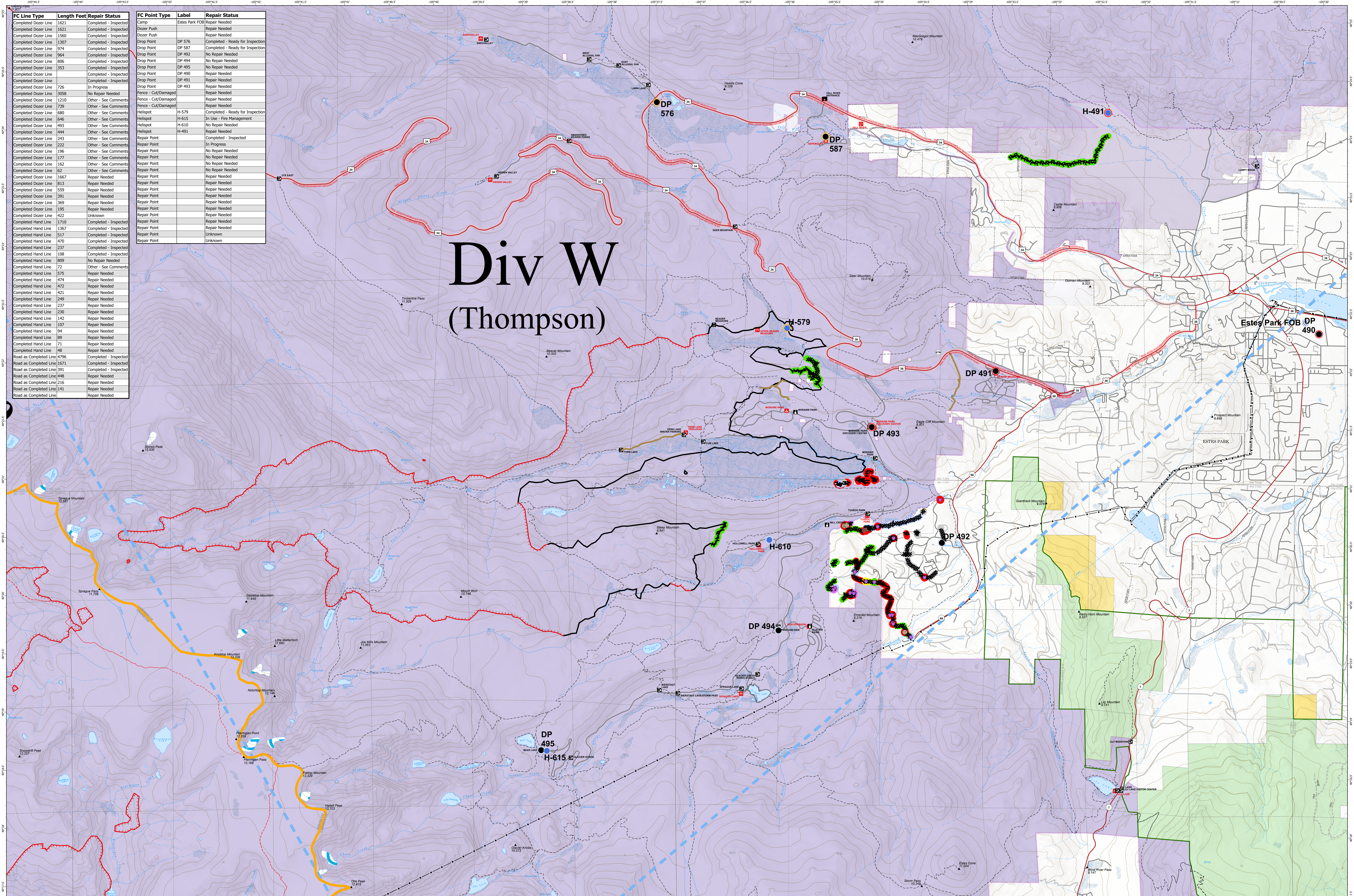


FC Line Type	Length Feet	Repair Status	FC Point Type	Label	Repair Status
Completed Dozer Line	1621	Completed - Inspected	Camp	Estes Park FOB	Repair Needed
Completed Dozer Line	1621	Completed - Inspected	Dozer Push		Repair Needed
Completed Dozer Line	1560	Completed - Inspected	Dozer Push		Repair Needed
Completed Dozer Line	1307	Completed - Inspected	Drop Point	DP 576	Completed - Ready for Inspection
Completed Dozer Line	974	Completed - Inspected	Drop Point	DP 587	Completed - Ready for Inspection
Completed Dozer Line	964	Completed - Inspected	Drop Point	DP 492	No Repair Needed
Completed Dozer Line	806	Completed - Inspected	Drop Point	DP 494	No Repair Needed
Completed Dozer Line	353	Completed - Inspected	Drop Point	DP 495	No Repair Needed
Completed Dozer Line		Completed - Inspected	Drop Point	DP 490	Repair Needed
Completed Dozer Line		Completed - Inspected	Drop Point	DP 491	Repair Needed
Completed Dozer Line	726	In Progress	Drop Point	DP 493	Repair Needed
Completed Dozer Line	3058	No Repair Needed	Fence - Cut/Damaged		Repair Needed
Completed Dozer Line	1210	Other - See Comments	Fence - Cut/Damaged		Repair Needed
Completed Dozer Line	778	Other - See Comments	Fence - Cut/Damaged		Repair Needed
Completed Dozer Line	680	Other - See Comments	Helispot	H-579	Completed - Ready for Inspection
Completed Dozer Line	646	Other - See Comments	Helispot	H-615	In Use - Fire Management
Completed Dozer Line	493	Other - See Comments	Helispot	H-610	No Repair Needed
Completed Dozer Line	444	Other - See Comments	Helispot	H-491	Repair Needed
Completed Dozer Line	243	Other - See Comments	Repair Point		Completed - Inspected
Completed Dozer Line	222	Other - See Comments	Repair Point		In Progress
Completed Dozer Line	196	Other - See Comments	Repair Point		No Repair Needed
Completed Dozer Line	177	Other - See Comments	Repair Point		No Repair Needed
Completed Dozer Line	162	Other - See Comments	Repair Point		No Repair Needed
Completed Dozer Line	62	Other - See Comments	Repair Point		No Repair Needed
Completed Dozer Line	1667	Repair Needed	Repair Point		Repair Needed
Completed Dozer Line	813	Repair Needed	Repair Point		Repair Needed
Completed Dozer Line	550	Repair Needed	Repair Point		Repair Needed
Completed Dozer Line	391	Repair Needed	Repair Point		Repair Needed
Completed Dozer Line	369	Repair Needed	Repair Point		Repair Needed
Completed Dozer Line	195	Repair Needed	Repair Point		Repair Needed
Completed Dozer Line	422	Unknown	Repair Point		Repair Needed
Completed Hand Line	1710	Completed - Inspected	Repair Point		Repair Needed
Completed Hand Line	1367	Completed - Inspected	Repair Point		Repair Needed
Completed Hand Line	517	Completed - Inspected	Repair Point		Unknown
Completed Hand Line	470	Completed - Inspected	Repair Point		Unknown
Completed Hand Line	237	Completed - Inspected	Repair Point		Unknown
Completed Hand Line	108	Completed - Inspected	Repair Point		Unknown
Completed Hand Line	809	No Repair Needed	Repair Point		Unknown
Completed Hand Line	72	Other - See Comments	Repair Point		Unknown
Completed Hand Line	575	Repair Needed	Repair Point		Unknown
Completed Hand Line	474	Repair Needed	Repair Point		Unknown
Completed Hand Line	472	Repair Needed	Repair Point		Unknown
Completed Hand Line	421	Repair Needed	Repair Point		Unknown
Completed Hand Line	249	Repair Needed	Repair Point		Unknown
Completed Hand Line	237	Repair Needed	Repair Point		Unknown
Completed Hand Line	230	Repair Needed	Repair Point		Unknown
Completed Hand Line	142	Repair Needed	Repair Point		Unknown
Completed Hand Line	107	Repair Needed	Repair Point		Unknown
Completed Hand Line	94	Repair Needed	Repair Point		Unknown
Completed Hand Line	89	Repair Needed	Repair Point		Unknown
Completed Hand Line	71	Repair Needed	Repair Point		Unknown
Completed Hand Line	48	Repair Needed	Repair Point		Unknown
Road as Completed Line	4796	Completed - Inspected	Road as Completed Line		Unknown
Road as Completed Line	1671	Completed - Inspected	Road as Completed Line		Unknown
Road as Completed Line	391	Completed - Inspected	Road as Completed Line		Unknown
Road as Completed Line	443	Repair Needed	Road as Completed Line		Unknown
Road as Completed Line	216	Repair Needed	Road as Completed Line		Unknown
Road as Completed Line	141	Repair Needed	Road as Completed Line		Unknown
Road as Completed Line		Repair Needed	Road as Completed Line		Unknown

## Div W (Thompson)



**EAST TROUBLESOME - GRAND ZONE**  
**WY-MRF-000408**  
**11/04/20 1850 hrs**  
**193,812 Total Acres**  
**188,915 Grand Zone**  
**4,897 Thompson Zone**

<ul style="list-style-type: none"> <li>Camp</li> <li>Drop Point</li> <li>Dozer Push</li> <li>Fence - Cut/Damaged</li> <li>Helispot</li> <li>Repair Point</li> <li>Uncontrolled Fire Edge</li> <li>Contained Line</li> </ul>	<ul style="list-style-type: none"> <li>Completed Dozer Line</li> <li>Completed Hand Line</li> <li>Road as Completed Line</li> <li>Temporary Flight Restriction</li> <li>Repair Line</li> <li>ZoneBreak</li> </ul>	<ul style="list-style-type: none"> <li>Repair Status Point</li> <li>Completed - Inspected</li> <li>In Use - Fire Management</li> <li>Completed - Ready for Inspection</li> <li>In Progress</li> <li>Repair Needed</li> <li>No Repair Needed</li> <li>Other - See Comments</li> <li>Unknown</li> </ul>	<ul style="list-style-type: none"> <li>Repair Status Line</li> <li>Completed - Inspected</li> <li>In Use - Fire Management</li> <li>Completed - Ready for Inspection</li> <li>In Progress</li> <li>Repair Needed</li> <li>No Repair Needed</li> <li>Other - See Comments</li> <li>Unknown</li> </ul>	<ul style="list-style-type: none"> <li>Surface Management Agency (Outline)</li> <li>Bureau of Land Management</li> <li>Bureau of Reclamation</li> <li>Indian Reservation</li> <li>Military Reservation</li> <li>National Grasslands</li> <li>National Park Service</li> <li>Other Federal</li> <li>Private</li> <li>State</li> <li>State, County, City, Areas</li> <li>Bankhead-Jones Land Use Lands</li> <li>US Fish and Wildlife Service</li> <li>US Forest Service</li> <li>World Hillshade</li> </ul>
---	---	---	--	---