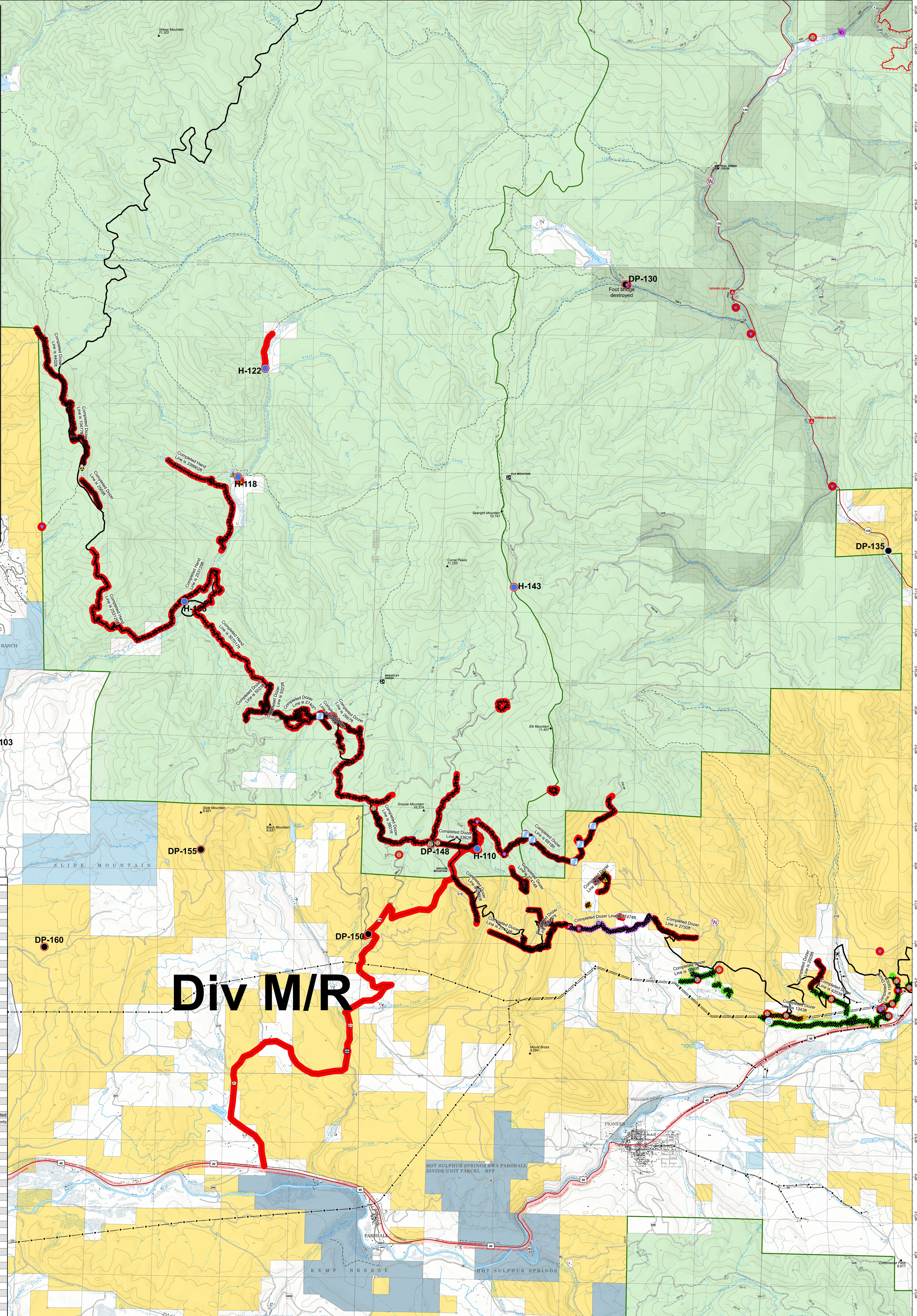


# SUPPRESSION REPAIR - EAST TROUBLESOME - WEST

# NOVEMBER 10, 2020

FC Line Type	Length	Feet	Repair Status
Completed Dozer Line	15850		Completed - Inspected
Completed Dozer Line	8296		Completed - Inspected
Completed Dozer Line	4223		Completed - Inspected
Completed Dozer Line	1799		Completed - Inspected
Completed Dozer Line	938		Completed - Inspected
Completed Dozer Line	898		Completed - Inspected
Completed Dozer Line	842		Completed - Inspected
Completed Dozer Line	654		Completed - Inspected
Completed Dozer Line	796		Completed - Inspected
Completed Dozer Line	90		Completed - Inspected
Completed Dozer Line	27474		Completed - Ready for Inspection
Completed Dozer Line	27474		Completed - Ready for Inspection
Completed Dozer Line	1343		Completed - Ready for Inspection
Completed Dozer Line	1218		Completed - Ready for Inspection
Completed Dozer Line	612		Completed - Ready for Inspection
Completed Dozer Line	27474		Repair Needed
Completed Dozer Line	27474		Repair Needed
Completed Dozer Line	27474		Repair Needed
Completed Dozer Line	27474		Repair Needed
Completed Dozer Line	10477		Repair Needed
Completed Dozer Line	9307		Repair Needed
Completed Dozer Line	6918		Repair Needed
Completed Dozer Line	5023		Repair Needed
Completed Dozer Line	5023		Repair Needed
Completed Dozer Line	1462		Repair Needed
Completed Dozer Line	3801		Repair Needed
Completed Dozer Line	1362		Repair Needed
Completed Dozer Line	2950		Repair Needed
Completed Dozer Line	2928		Repair Needed
Completed Dozer Line	2750		Repair Needed
Completed Dozer Line	2740		Repair Needed
Completed Dozer Line	2740		Repair Needed
Completed Dozer Line	2667		Repair Needed
Completed Dozer Line	2570		Repair Needed
Completed Dozer Line	2570		Repair Needed
Completed Dozer Line	2569		Repair Needed
Completed Dozer Line	1351		Repair Needed
Completed Dozer Line	1351		Repair Needed
Completed Dozer Line	1313		Repair Needed
Completed Dozer Line	1237		Repair Needed
Completed Dozer Line	1066		Repair Needed
Completed Dozer Line	1033		Repair Needed
Completed Dozer Line	1033		Repair Needed
Completed Dozer Line	946		Repair Needed
Completed Dozer Line	621		Repair Needed
Completed Dozer Line	621		Repair Needed
Completed Dozer Line	537		Repair Needed
Completed Dozer Line	313		Repair Needed
Completed Dozer Line	269		Repair Needed
Completed Dozer Line	235		Repair Needed
Completed Dozer Line	187		Repair Needed
Completed Dozer Line	187		Repair Needed
Completed Dozer Line	187		Repair Needed
Completed Dozer Line	187		Repair Needed
Completed Dozer Line	27474		Unknown
Completed Hand Line	339902		Repair Needed
Completed Hand Line	339902		Repair Needed
Completed Hand Line	307017		Repair Needed
Completed Hand Line	307017		Repair Needed
Completed Hand Line	307017		Repair Needed
Completed Hand Line	307017		Repair Needed
Completed Hand Line	253129		Repair Needed
Completed Hand Line	253129		Repair Needed
Completed Hand Line	253129		Repair Needed
Completed Hand Line	77		Repair Needed
Road as Completed Line	339902		Repair Needed
Road as Completed Line	253129		Repair Needed
Road as Completed Line	10889		Repair Needed
Road as Completed Line	10214		Repair Needed
Road as Completed Line	5033		Repair Needed
Road as Completed Line	1507		Repair Needed
Road as Completed Line	1003		Repair Needed
Road as Completed Line	410		Repair Needed
Road Repair	5421		Repair Needed
Road Repair	2654		Repair Needed

FC Point Type	Label	Repair Status
Drop Point	DP-135	No Repair Needed
Drop Point	DP-101	Repair Needed
Drop Point	DP-103	Repair Needed
Drop Point	DP-130	Repair Needed
Drop Point	DP-148	Repair Needed
Drop Point	DP-150	Repair Needed
Drop Point	DP-155	Repair Needed
Drop Point	DP-160	Repair Needed
Fence - Cut/Damaged		Repair Needed
Fence - Cut/Damaged		Repair Needed
Fence - Cut/Damaged		Repair Needed
Fence - Cut/Damaged		Repair Needed
Fence - Cut/Damaged		Repair Needed
Fence - Cut/Damaged		Repair Needed
Fence - Cut/Damaged		Repair Needed
Fence - Cut/Damaged		Repair Needed
Fence - Cut/Damaged		Repair Needed
Fence - Cut/Damaged		Repair Needed
Fence - Cut/Damaged		Repair Needed
Fence - Cut/Damaged		Repair Needed
Fence - Cut/Damaged		Repair Needed
Fence - Cut/Damaged		Repair Needed
Fence - Cut/Damaged		Repair Needed
Hazard	H-110	No Repair Needed
Hazard	H-118	Repair Needed
Hazard	H-122	Repair Needed
Hazard	H-143	Repair Needed
Hazard	H-185	Repair Needed
Repair Point		Completed - Inspected
Repair Point		Other - See Comments
Repair Point		Repair Needed
Repair Point		Repair Needed
Repair Point		Repair Needed
Repair Point		Repair Needed
Repair Point		Repair Needed
Repair Point		Repair Needed
Repair Point		Repair Needed
Repair Point		Repair Needed
Repair Point		Repair Needed
Repair Point		Repair Needed
Repair Point		Repair Needed
Repair Point		Repair Needed
Repair Point		Repair Needed
Repair Point		Repair Needed
Repair Point		Repair Needed
Repair Point		Repair Needed
Repair Point		Repair Needed
Repair Point		Repair Needed
Repair Point		Repair Needed
Repair Point		Repair Needed
Repair Point		Repair Needed
Repair Point		Repair Needed
Repair Point		Repair Needed
Restricted Water Source		Repair Needed
Restricted Water Source		Repair Needed
Safety Zone		No Repair Needed
Safety Zone		Repair Needed
Stream Crossing		Repair Needed
Stream Crossing		Repair Needed
Stream Crossing		Repair Needed
Stream Crossing		Repair Needed
Stream Crossing		Repair Needed
Stream Crossing		Repair Needed
Stream Crossing		Repair Needed
Stream Crossing		Repair Needed
Water Development or Draft Site		Repair Needed



**EAST TROUBLESOME - 11/04/20 1850 hrs**  
**GRAND ZONE 193,812 Total Acres**  
**WY-MRF-000408 188,915 Grand Zone**  
**4,897 Thompson Zone**

<ul style="list-style-type: none"><li>Drop Point</li><li>Fence - Cut/Damaged</li><li>Hazard</li><li>Hellspot</li><li>Repair Point</li><li>Safety Zone</li></ul>	<ul style="list-style-type: none"><li>Staging Area</li><li>Stream Crossing</li><li>Restricted Water Source</li><li>Water Development or Draft Site</li><li>Uncontrolled Fire Edge</li><li>Contained Line</li></ul>	<ul style="list-style-type: none"><li>Completed Dozer Line</li><li>Completed Hand Line</li><li>Road as Completed Line</li><li>Repair Line</li><li>Road Repair</li><li>BLM CO Mining Claims</li></ul>	<ul style="list-style-type: none"><li>Repair Status Point</li><li>Completed - Inspected</li><li>In Use - Fire Management</li><li>Completed - Ready for Inspection</li><li>In Progress</li><li>Repair Needed</li><li>No Repair Needed</li><li>Other - See Comments</li><li>Unknown</li></ul>	<ul style="list-style-type: none"><li>Repair Status Line</li><li>Completed - Inspected</li><li>In Use - Fire Management</li><li>Completed - Ready for Inspection</li><li>In Progress</li><li>Repair Needed</li><li>No Repair Needed</li><li>Other - See Comments</li><li>Unknown</li></ul>	<ul style="list-style-type: none"><li>Surface Management Agency (Outline)</li><li>Bureau of Land Management</li><li>Bureau of Reclamation</li><li>Indian Reservation</li><li>Military Reservation</li><li>National Grasslands</li><li>National Park Service</li><li>Other Federal</li><li>Private</li><li>State</li><li>US Fish and Wildlife Service</li><li>US Forest Service</li><li>World Hillshade</li></ul>	<ul style="list-style-type: none"><li>State, County, City, Areas</li><li>Bankhead-Jones Land Use Lands</li></ul>
---	--	--	---	--	--	--

0 0.5 1 Miles  
RM Type 3 Team