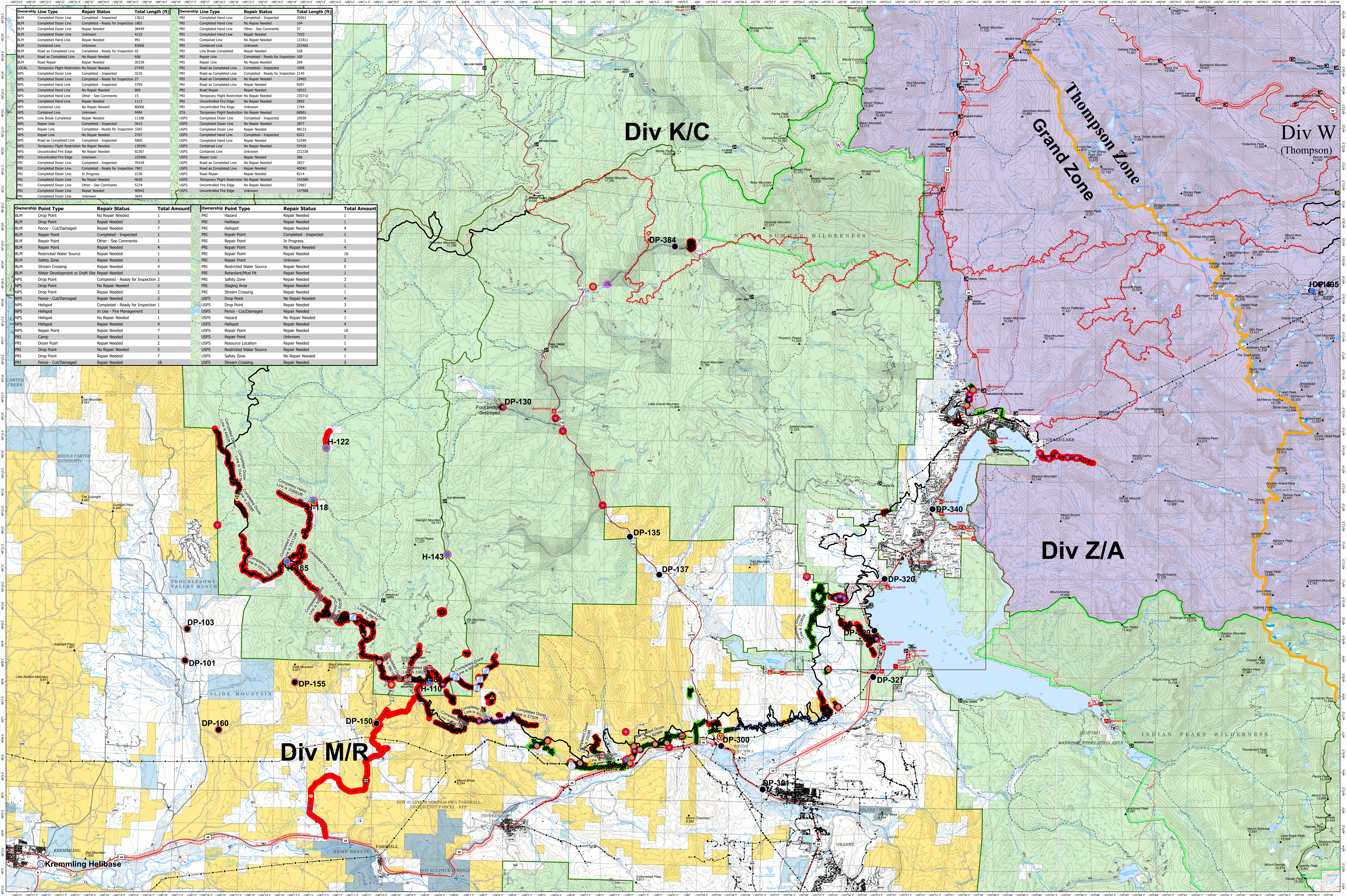


SUPPRESSION REPAIR - EAST TROUBLESOME - GRAND AND THOMPSON ZONES

NOVEMBER 10, 2020



Ownership Line Type	Repair Status	Total Length (ft)	Ownership Line Type	Repair Status	Total Length (ft)
BLM Completed Dozer Line	Completed - Inspected	13012	PRI Completed Hand Line	Completed - Inspected	20561
BLM Completed Dozer Line	Completed - Ready for Inspection	1803	PRI Completed Hand Line	No Repair Needed	164
BLM Completed Dozer Line	Repair Needed	38449	PRI Completed Hand Line	Other - See Comments	57
BLM Completed Dozer Line	Unknown	4123	PRI Completed Hand Line	Repair Needed	7203
BLM Completed Hand Line	Repair Needed	991	PRI Contained Line	No Repair Needed	13181
BLM Contained Line	Unknown	83606	PRI Contained Line	Unknown	233802
BLM Road as Completed Line	Completed - Ready for Inspection	65	PRI Line Break Completed	Repair Needed	528
BLM Road as Completed Line	No Repair Needed	608	PRI Repair Line	Completed - Ready for Inspection	100
BLM Road Repair	Repair Line	30339	PRI Repair Line	No Repair Needed	269
LOCAL Temporary Flight Restriction	No Repair Needed	27455	PRI Road as Completed Line	Completed - Inspected	1058
NPS Completed Dozer Line	Completed - Inspected	3226	PRI Road as Completed Line	Completed - Ready for Inspection	2145
NPS Completed Dozer Line	Completed - Ready for Inspection	27	PRI Road as Completed Line	No Repair Needed	19465
NPS Completed Hand Line	Completed - Inspected	5799	PRI Road as Completed Line	Repair Needed	9287
NPS Completed Hand Line	No Repair Needed	809	PRI Road Repair	Repair Needed	18823
NPS Completed Hand Line	Other - See Comments	15	PRI Temporary Flight Restriction	No Repair Needed	235710
NPS Completed Hand Line	Repair Needed	1113	PRI Uncontrolled Fire Edge	No Repair Needed	2892
NPS Contained Line	No Repair Needed	80006	PRI Uncontrolled Fire Edge	Unknown	1744
NPS Contained Line	Unknown	9484	STN Temporary Flight Restriction	No Repair Needed	68901
NPS Line Break Completed	Repair Needed	11186	USFS Completed Dozer Line	Completed - Inspected	29559
NPS Repair Line	Completed - Inspected	3615	USFS Completed Dozer Line	No Repair Needed	3977
NPS Repair Line	Completed - Ready for Inspection	3283	USFS Completed Dozer Line	Repair Needed	98133
NPS Repair Line	No Repair Needed	2207	USFS Contained Line	Completed - Inspected	6303
NPS Road as Completed Line	Completed - Inspected	5800	USFS Completed Hand Line	Repair Needed	53349
NPS Temporary Flight Restriction	No Repair Needed	139345	USFS Contained Line	No Repair Needed	57416
NPS Uncontrolled Fire Edge	No Repair Needed	92367	USFS Contained Line	Unknown	222338
NPS Uncontrolled Fire Edge	Repair Needed	2226	USFS Repair Line	Repair Needed	386
PRI Completed Dozer Line	Completed - Inspected	76428	USFS Road as Completed Line	No Repair Needed	2827
PRI Completed Dozer Line	Completed - Ready for Inspection	7907	USFS Road as Completed Line	Repair Needed	40492
PRI Completed Dozer Line	In Progress	2236	USFS Road Repair	Repair Needed	8214
PRI Completed Dozer Line	No Repair Needed	4630	USFS Temporary Flight Restriction	No Repair Needed	243589
PRI Completed Dozer Line	Other - See Comments	5274	USFS Uncontrolled Fire Edge	No Repair Needed	72967
PRI Completed Dozer Line	Repair Needed	40942	USFS Uncontrolled Fire Edge	Unknown	147988
PRI Completed Dozer Line	Unknown	3645			

Ownership Point Type	Repair Status	Total Amount	Ownership Point Type	Repair Status	Total Amount
BLM Drop Point	No Repair Needed	1	PRI Hazard	Repair Needed	1
BLM Drop Point	Repair Needed	3	PRI Helibase	Repair Needed	1
BLM Fence - Cut/Damaged	Repair Needed	7	PRI Helibase	Repair Needed	4
BLM Repair Point	Completed - Inspected	1	PRI Repair Point	Completed - Inspected	1
BLM Repair Point	Other - See Comments	1	PRI Repair Point	In Progress	1
BLM Repair Point	Repair Needed	4	PRI Repair Point	No Repair Needed	4
BLM Restricted Water Source	Repair Needed	1	PRI Repair Point	Repair Needed	16
BLM Safety Zone	Repair Needed	1	PRI Repair Point	Unknown	2
BLM Stream Crossing	Repair Needed	4	USFS Restricted Water Source	Repair Needed	5
BLM Water Development or Draft Site	Repair Needed	1	PRI Retardant/Mud Pit	Repair Needed	1
NPS Drop Point	Completed - Ready for Inspection	2	PRI Safety Zone	Repair Needed	3
NPS Drop Point	No Repair Needed	2	PRI Staging Area	Repair Needed	1
NPS Drop Point	Repair Needed	2	PRI Stream Crossing	Repair Needed	1
NPS Fence - Cut/Damaged	Repair Needed	2	USFS Drop Point	No Repair Needed	4
NPS Helibase	Completed - Ready for Inspection	1	USFS Drop Point	Repair Needed	3
NPS Helibase	In Use - Fire Management	1	USFS Fence - Cut/Damaged	Repair Needed	4
NPS Helibase	No Repair Needed	1	USFS Hazard	No Repair Needed	1
NPS Helibase	Repair Needed	4	USFS Helibase	Repair Needed	4
NPS Repair Point	Repair Needed	1	USFS Repair Point	Repair Needed	16
PRI Camp	Repair Needed	1	USFS Repair Point	Unknown	1
PRI Dozer Push	Repair Needed	2	USFS Resource Location	Repair Needed	1
PRI Drop Point	No Repair Needed	5	USFS Restricted Water Source	Repair Needed	4
PRI Drop Point	Repair Needed	7	USFS Safety Zone	No Repair Needed	1
PRI Fence - Cut/Damaged	Repair Needed	18	USFS Stream Crossing	Repair Needed	3

EAST TROUBLESOME - GRAND ZONE
WY-MRF-000408
 11/04/20 1850 hrs
 193,812 Total Acres
 188,915 Grand Zone
 4,897 Thompson Zone

Drop Point (Red circle)

Fence - Cut/Damaged (Yellow triangle)

Hazard (Red circle with X)

Helibase (Blue circle)

Helispot (Blue circle with X)

Repair Point (Green triangle)

Safety Zone (Blue triangle)

Staging Area (Blue circle)

Stream Crossing (Blue circle with X)

Restricted Water Source (Red circle with X)

Water Development or Draft Site (Blue circle with X)

Uncontrolled Fire Edge (Red line)

Contained Line (Black line)

Completed Dozer Line (Black line with X)

Completed Hand Line (Red line)

Road as Completed Line (Red line with X)

Line Break Completed (Black line with X)

Temporary Flight Restriction (Blue line)

Repair Line (Yellow line)

Road Repair (Black line)

BLM CO Mining Claims (Black line)

ZoneBreak (Yellow line)

Repair Status Point

- Completed - Inspected (Green circle)
- In Use - Fire Management (Yellow circle)
- Completed - Ready for Inspection (Red circle)
- In Progress (Orange circle)
- Repair Needed (Red circle)
- No Repair Needed (Blue circle)
- Other - See Comments (Purple circle)
- Unknown (Purple circle)

Repair Status Line

- Completed - Inspected (Green line)
- In Use - Fire Management (Yellow line)
- Completed - Ready for Inspection (Red line)
- In Progress (Orange line)
- Repair Needed (Red line)
- No Repair Needed (Blue line)
- Other - See Comments (Purple line)
- Unknown (Purple line)

Surface Management Agency (Outline)

- Bureau of Land Management (Yellow)
- Bureau of Reclamation (Orange)
- Indian Reservation (Red)
- National Grasslands (Green)
- National Park Service (Blue)
- Other Federal (Purple)

Private (White)

State (Light Blue)

State, County, City, Areas (Light Green)

Bankhead-Jones Land Use Lands (Light Yellow)

US Fish and Wildlife Service (Light Blue)

US Forest Service (Light Green)

World Hillshade (Light Blue)

Map Projection: UTM Zone 13, NAD83

RM Type 3 Team