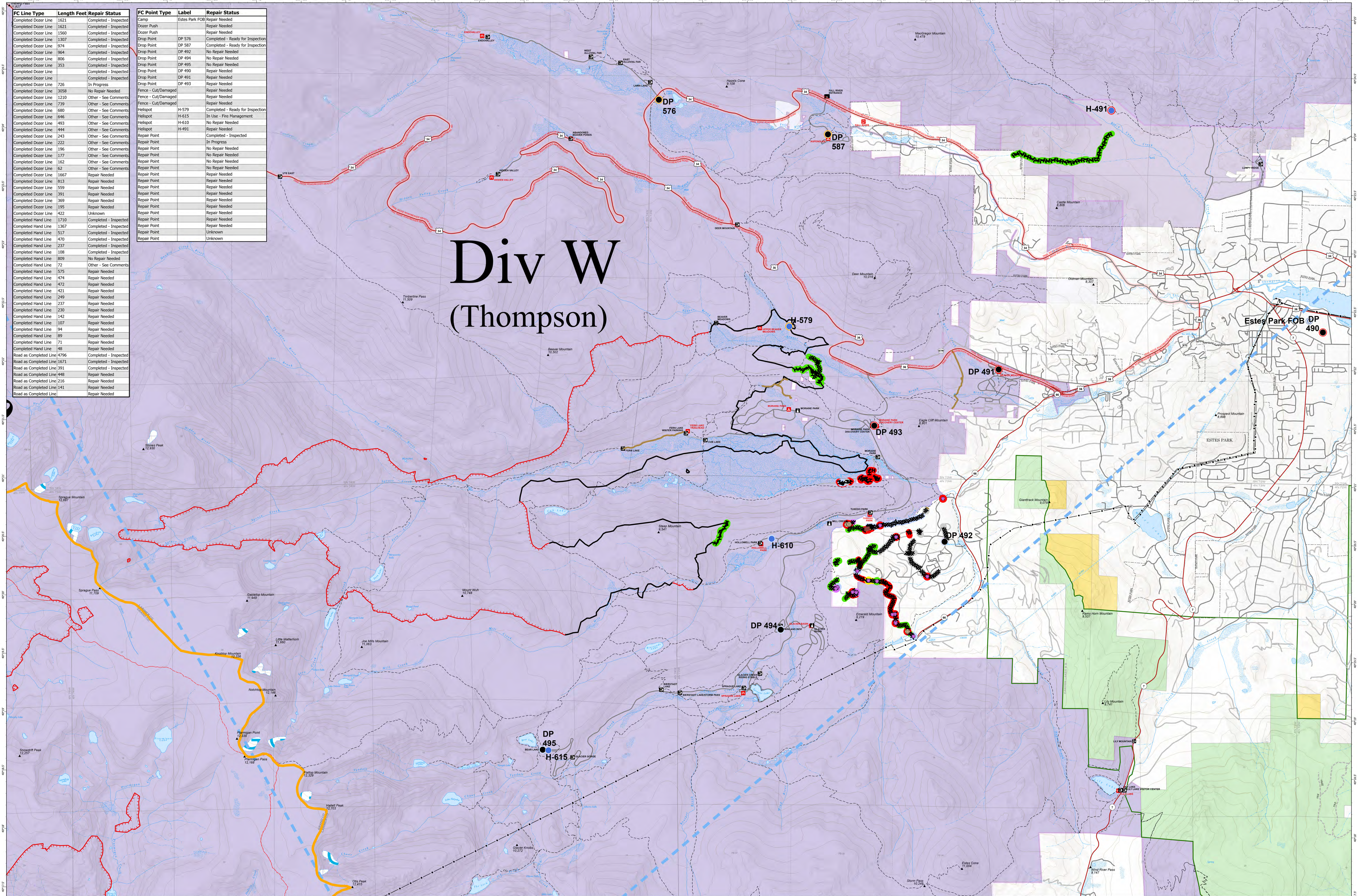


| FC Line Type | Length Feet | Repair Status | FC Point Type | Label | Repair Status |
|------------------------|-------------|-----------------------|---------------------|----------------|----------------------------------|
| Completed Dozer Line | 1621 | Completed - Inspected | Camp | Estes Park FOB | Repair Needed |
| Completed Dozer Line | 1621 | Completed - Inspected | Dozer Push | | Repair Needed |
| Completed Dozer Line | 1560 | Completed - Inspected | Dozer Push | | Repair Needed |
| Completed Dozer Line | 1307 | Completed - Inspected | Drop Point | DP 576 | Completed - Ready for Inspection |
| Completed Dozer Line | 974 | Completed - Inspected | Drop Point | DP 587 | Completed - Ready for Inspection |
| Completed Dozer Line | 964 | Completed - Inspected | Drop Point | DP 492 | No Repair Needed |
| Completed Dozer Line | 806 | Completed - Inspected | Drop Point | DP 494 | No Repair Needed |
| Completed Dozer Line | 353 | Completed - Inspected | Drop Point | DP 495 | No Repair Needed |
| Completed Dozer Line | | Completed - Inspected | Drop Point | DP 490 | Repair Needed |
| Completed Dozer Line | | Completed - Inspected | Drop Point | DP 491 | Repair Needed |
| Completed Dozer Line | | Completed - Inspected | Drop Point | DP 493 | Repair Needed |
| Completed Dozer Line | 726 | In Progress | Fence - Cut/Damaged | | Repair Needed |
| Completed Dozer Line | 3058 | No Repair Needed | Fence - Cut/Damaged | | Repair Needed |
| Completed Dozer Line | 1210 | Other - See Comments | Fence - Cut/Damaged | | Repair Needed |
| Completed Dozer Line | 739 | Other - See Comments | Fence - Cut/Damaged | | Repair Needed |
| Completed Dozer Line | 680 | Other - See Comments | Helispot | H-579 | Completed - Ready for Inspection |
| Completed Dozer Line | 646 | Other - See Comments | Helispot | H-615 | In Use - Fire Management |
| Completed Dozer Line | 493 | Other - See Comments | Helispot | H-610 | No Repair Needed |
| Completed Dozer Line | 444 | Other - See Comments | Helispot | H-491 | Repair Needed |
| Completed Dozer Line | 243 | Other - See Comments | Repair Point | | Completed - Inspected |
| Completed Dozer Line | 222 | Other - See Comments | Repair Point | | In Progress |
| Completed Dozer Line | 196 | Other - See Comments | Repair Point | | No Repair Needed |
| Completed Dozer Line | 177 | Other - See Comments | Repair Point | | No Repair Needed |
| Completed Dozer Line | 162 | Other - See Comments | Repair Point | | No Repair Needed |
| Completed Dozer Line | 62 | Other - See Comments | Repair Point | | No Repair Needed |
| Completed Dozer Line | 1667 | Repair Needed | Repair Point | | Repair Needed |
| Completed Dozer Line | 813 | Repair Needed | Repair Point | | Repair Needed |
| Completed Dozer Line | 550 | Repair Needed | Repair Point | | Repair Needed |
| Completed Dozer Line | 391 | Repair Needed | Repair Point | | Repair Needed |
| Completed Dozer Line | 369 | Repair Needed | Repair Point | | Repair Needed |
| Completed Dozer Line | 195 | Repair Needed | Repair Point | | Repair Needed |
| Completed Dozer Line | 422 | Unknown | Repair Point | | Repair Needed |
| Completed Hand Line | 1710 | Completed - Inspected | Repair Point | | Repair Needed |
| Completed Hand Line | 1367 | Completed - Inspected | Repair Point | | Repair Needed |
| Completed Hand Line | 517 | Completed - Inspected | Repair Point | | Unknown |
| Completed Hand Line | 470 | Completed - Inspected | Repair Point | | Unknown |
| Completed Hand Line | 237 | Completed - Inspected | | | |
| Completed Hand Line | 108 | Completed - Inspected | | | |
| Completed Hand Line | 809 | No Repair Needed | | | |
| Completed Hand Line | 72 | Other - See Comments | | | |
| Completed Hand Line | 575 | Repair Needed | | | |
| Completed Hand Line | 474 | Repair Needed | | | |
| Completed Hand Line | 472 | Repair Needed | | | |
| Completed Hand Line | 421 | Repair Needed | | | |
| Completed Hand Line | 249 | Repair Needed | | | |
| Completed Hand Line | 237 | Repair Needed | | | |
| Completed Hand Line | 230 | Repair Needed | | | |
| Completed Hand Line | 142 | Repair Needed | | | |
| Completed Hand Line | 107 | Repair Needed | | | |
| Completed Hand Line | 94 | Repair Needed | | | |
| Completed Hand Line | 89 | Repair Needed | | | |
| Completed Hand Line | 71 | Repair Needed | | | |
| Completed Hand Line | 48 | Repair Needed | | | |
| Road as Completed Line | 4796 | Completed - Inspected | | | |
| Road as Completed Line | 1671 | Completed - Inspected | | | |
| Road as Completed Line | 391 | Completed - Inspected | | | |
| Road as Completed Line | 448 | Repair Needed | | | |
| Road as Completed Line | 216 | Repair Needed | | | |
| Road as Completed Line | 141 | Repair Needed | | | |
| Road as Completed Line | | Repair Needed | | | |

Div W (Thompson)



EAST TROUBLESOME - GRAND ZONE
11/04/20 1850 hrs
193,812 Total Acres
188,915 Grand Zone
4,897 Thompson Zone

| | | | | | | | |
|---|--|---|--|---|--|--|---|
| <ul style="list-style-type: none"> Camp Drop Point Dozer Push Fence - Cut/Damaged | <ul style="list-style-type: none"> Helispot Repair Point Uncontrolled Fire Edge Contained Line | <ul style="list-style-type: none"> Completed Dozer Line Completed Hand Line Road as Completed Line Temporary Flight Restriction | <ul style="list-style-type: none"> Repair Line ZoneBreak | <ul style="list-style-type: none"> Repair Status Point Completed - Inspected In Use - Fire Management Completed - Ready for Inspection In Progress Repair Needed No Repair Needed Other - See Comments Unknown | <ul style="list-style-type: none"> Repair Status Line Completed - Inspected In Use - Fire Management Completed - Ready for Inspection In Progress Repair Needed No Repair Needed Other - See Comments Unknown | <ul style="list-style-type: none"> Surface Management Agency (Outline) Bureau of Land Management Bureau of Reclamation Indian Reservation Military Reservation National Grasslands National Park Service Other Federal | <ul style="list-style-type: none"> Private State State, County, City, Areas Bankhead-Jones Land Use Lands US Fish and Wildlife Service US Forest Service World Hillshade |
|---|--|---|--|---|--|--|---|