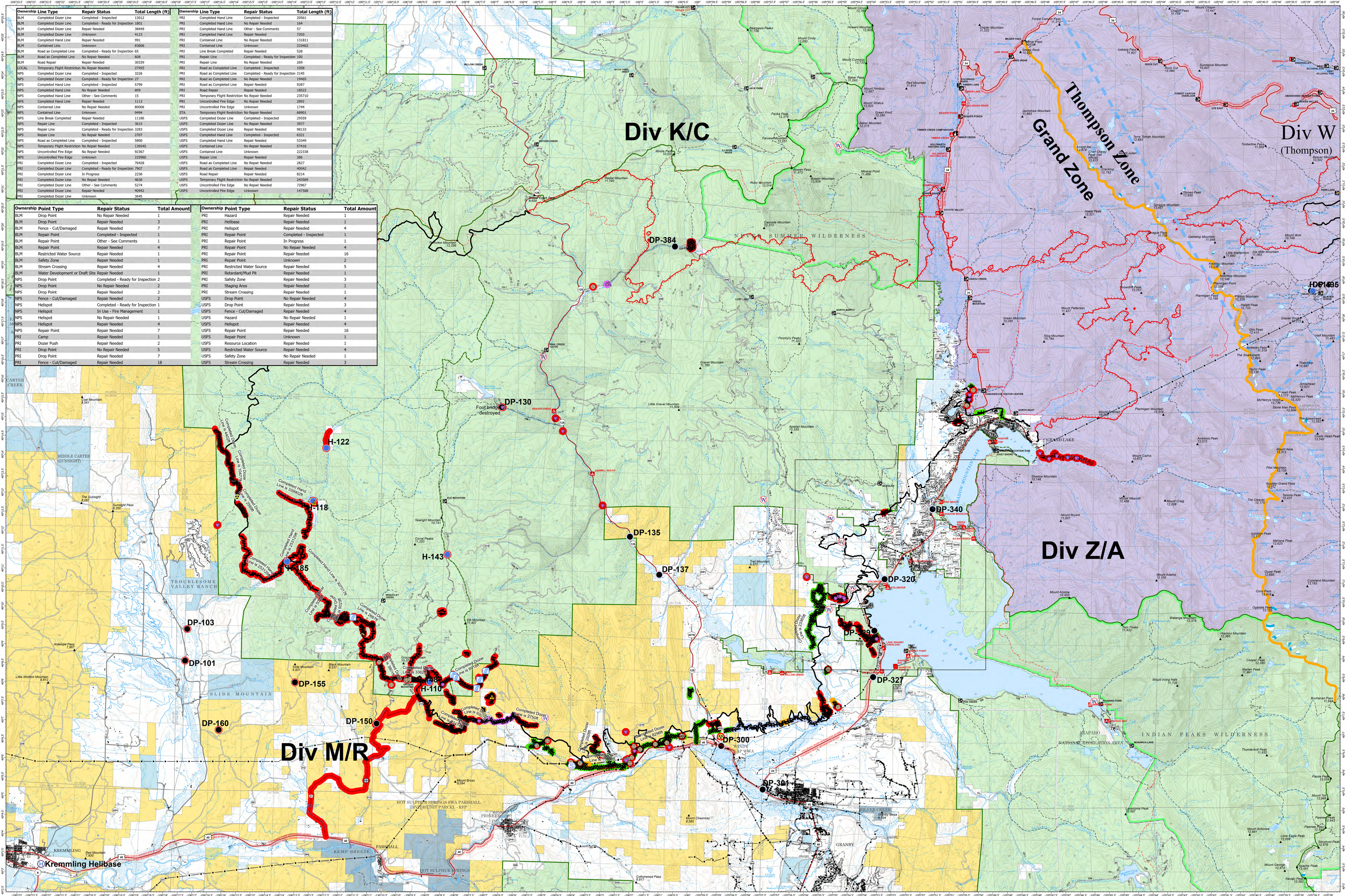


SUPPRESSION REPAIR - EAST TROUBLESOME - GRAND AND THOMPSON ZONES

NOVEMBER 10, 2020



Ownership Line Type	Repair Status	Total Length (ft)	Ownership Line Type	Repair Status	Total Length (ft)
BLM Completed Dozer Line	Completed - Inspected	13012	PRI Completed Hand Line	Completed - Inspected	20561
BLM Completed Dozer Line	Completed - Ready for Inspection	1803	PRI Completed Hand Line	No Repair Needed	164
BLM Completed Dozer Line	Repair Needed	38449	PRI Completed Hand Line	Other - See Comments	93
BLM Completed Dozer Line	Unknown	4123	PRI Completed Hand Line	Repair Needed	7203
BLM Completed Hand Line	Repair Needed	991	PRI Contained Line	No Repair Needed	13181
BLM Contained Line	Unknown	83606	PRI Contained Line	Unknown	233402
BLM Road as Completed Line	Completed - Ready for Inspection	45	PRI Line Break Completed	Repair Needed	528
BLM Road as Completed Line	No Repair Needed	608	PRI Repair Line	Completed - Ready for Inspection	160
BLM Road Repair	Repair Needed	30339	PRI Repair Line	No Repair Needed	269
LOCAL Temporary Flight Restriction No Repair Needed	No Repair Needed	27455	PRI Road as Completed Line	Completed - Inspected	1058
NPS Completed Dozer Line	Completed - Inspected	3226	PRI Road as Completed Line	Completed - Ready for Inspection	2145
NPS Completed Dozer Line	Completed - Ready for Inspection	27	PRI Road as Completed Line	No Repair Needed	19465
NPS Completed Hand Line	Completed - Inspected	5799	PRI Road as Completed Line	Repair Needed	9287
NPS Completed Hand Line	No Repair Needed	809	PRI Road Repair	Repair Needed	18923
NPS Completed Hand Line	Other - See Comments	15	PRI Temporary Flight Restriction No Repair Needed	No Repair Needed	235710
NPS Completed Hand Line	Repair Needed	1113	PRI Uncontrolled Fire Edge	No Repair Needed	2892
NPS Contained Line	No Repair Needed	80006	PRI Uncontrolled Fire Edge	Unknown	1744
NPS Contained Line	Unknown	9494	PRI Temporary Flight Restriction No Repair Needed	No Repair Needed	68903
NPS Line Break Completed	Repair Needed	11186	USFS Completed Dozer Line	Completed - Inspected	29599
NPS Repair Line	Completed - Inspected	3615	USFS Completed Dozer Line	No Repair Needed	3977
NPS Repair Line	Completed - Ready for Inspection	3283	USFS Completed Dozer Line	Repair Needed	98133
NPS Repair Line	No Repair Needed	2207	USFS Completed Hand Line	Completed - Inspected	6333
NPS Road as Completed Line	Completed - Inspected	5800	USFS Completed Hand Line	Repair Needed	53349
NPS Temporary Flight Restriction No Repair Needed	No Repair Needed	139345	USFS Contained Line	No Repair Needed	57416
NPS Uncontrolled Fire Edge	No Repair Needed	92387	USFS Contained Line	Unknown	223338
NPS Uncontrolled Fire Edge	Unknown	229960	USFS Repair Line	Repair Needed	786
PRI Completed Dozer Line	Completed - Inspected	76428	USFS Road as Completed Line	No Repair Needed	2827
PRI Completed Dozer Line	Completed - Ready for Inspection	7907	USFS Road as Completed Line	Repair Needed	40492
PRI Completed Dozer Line	In Progress	2238	USFS Road Repair	Repair Needed	8214
PRI Completed Dozer Line	No Repair Needed	4630	USFS Temporary Flight Restriction No Repair Needed	No Repair Needed	243569
PRI Completed Dozer Line	Other - See Comments	5274	USFS Uncontrolled Fire Edge	No Repair Needed	72967
PRI Completed Dozer Line	Repair Needed	40942	USFS Uncontrolled Fire Edge	Unknown	147588
PRI Completed Dozer Line	Unknown	3645			

Ownership Point Type	Repair Status	Total Amount	Ownership Point Type	Repair Status	Total Amount
BLM Drop Point	No Repair Needed	1	PRI Hazard	Repair Needed	1
BLM Drop Point	Repair Needed	3	PRI Helibase	Repair Needed	1
BLM Fence - Cut/Damaged	Repair Needed	7	PRI Helibase	Repair Needed	4
BLM Repair Point	Completed - Inspected	1	PRI Repair Point	Completed - Inspected	1
BLM Repair Point	Other - See Comments	1	PRI Repair Point	In Progress	1
BLM Repair Point	Repair Needed	4	PRI Repair Point	No Repair Needed	4
BLM Restricted Water Source	Repair Needed	1	PRI Repair Point	Repair Needed	16
BLM Safety Zone	Repair Needed	1	PRI Repair Point	Unknown	2
BLM Stream Crossing	Repair Needed	4	PRI Restricted Water Source	Repair Needed	5
BLM Water Development or Draft Site	Repair Needed	1	PRI Retained/Mud Pit	Repair Needed	1
NPS Drop Point	Completed - Ready for Inspection	2	PRI Safety Zone	Repair Needed	3
NPS Drop Point	No Repair Needed	2	PRI Staging Area	Repair Needed	1
NPS Drop Point	Repair Needed	2	PRI Stream Crossing	Repair Needed	1
NPS Fence - Cut/Damaged	Repair Needed	2	USFS Drop Point	No Repair Needed	4
NPS Helibase	Completed - Ready for Inspection	1	USFS Drop Point	Repair Needed	2
NPS Helibase	In Use - Fire Management	1	USFS Fence - Cut/Damaged	Repair Needed	4
NPS Helibase	No Repair Needed	1	USFS Hazard	No Repair Needed	1
NPS Helibase	Repair Needed	4	USFS Helibase	Repair Needed	4
NPS Repair Point	Repair Needed	16	USFS Repair Point	Repair Needed	16
PRI Camp	Repair Needed	7	USFS Repair Point	Unknown	1
PRI Dozer Push	Repair Needed	2	USFS Resource Location	Repair Needed	1
PRI Drop Point	No Repair Needed	5	USFS Restricted Water Source	Repair Needed	4
PRI Drop Point	Repair Needed	7	USFS Safety Zone	No Repair Needed	1
PRI Fence - Cut/Damaged	Repair Needed	18	USFS Stream Crossing	Repair Needed	3

EAST TROUBLESOME - 11/04/20 1850 hrs
GRAND ZONE 193,812 Total Acres
WY-MRF-000408 188,915 Grand Zone
4,897 Thompson Zone

Legend:

- Drop Point
- Fence - Cut/Damaged
- Hazard
- Helibase
- Helispot
- Repair Point
- Safety Zone
- Staging Area
- Stream Crossing
- Restricted Water Source
- Water Development or Draft Site
- Uncontrolled Fire Edge
- Contained Line
- Completed Dozer Line
- Completed Hand Line
- Road as Completed Line
- Line Break Completed
- Temporary Flight Restriction
- Repair Line
- Road Repair
- BLM CO Mining Claims
- ZoneBreak
- Repair Status Point
- Completed - Inspected
- In Use - Fire Management
- Completed - Ready for Inspection
- In Progress
- Repair Needed
- No Repair Needed
- Other - See Comments
- Unknown
- Repair Status Line
- Completed - Inspected
- In Use - Fire Management
- Completed - Ready for Inspection
- In Progress
- Repair Needed
- No Repair Needed
- Other - See Comments
- Unknown
- Surface Management Agency (Outline)
- Bureau of Land Management
- Bureau of Reclamation
- Indian Reservation
- National Grasslands
- National Park Service
- Other Federal
- Private
- State
- State, County, City, Areas
- Bankhead-Jones Land Use Lands
- US Fish and Wildlife Service
- US Forest Service
- World Hillshade

Scale: 0 to 2 Miles
 Map Projection: UTM Zone 13, NAD83

RM Type 3 Team