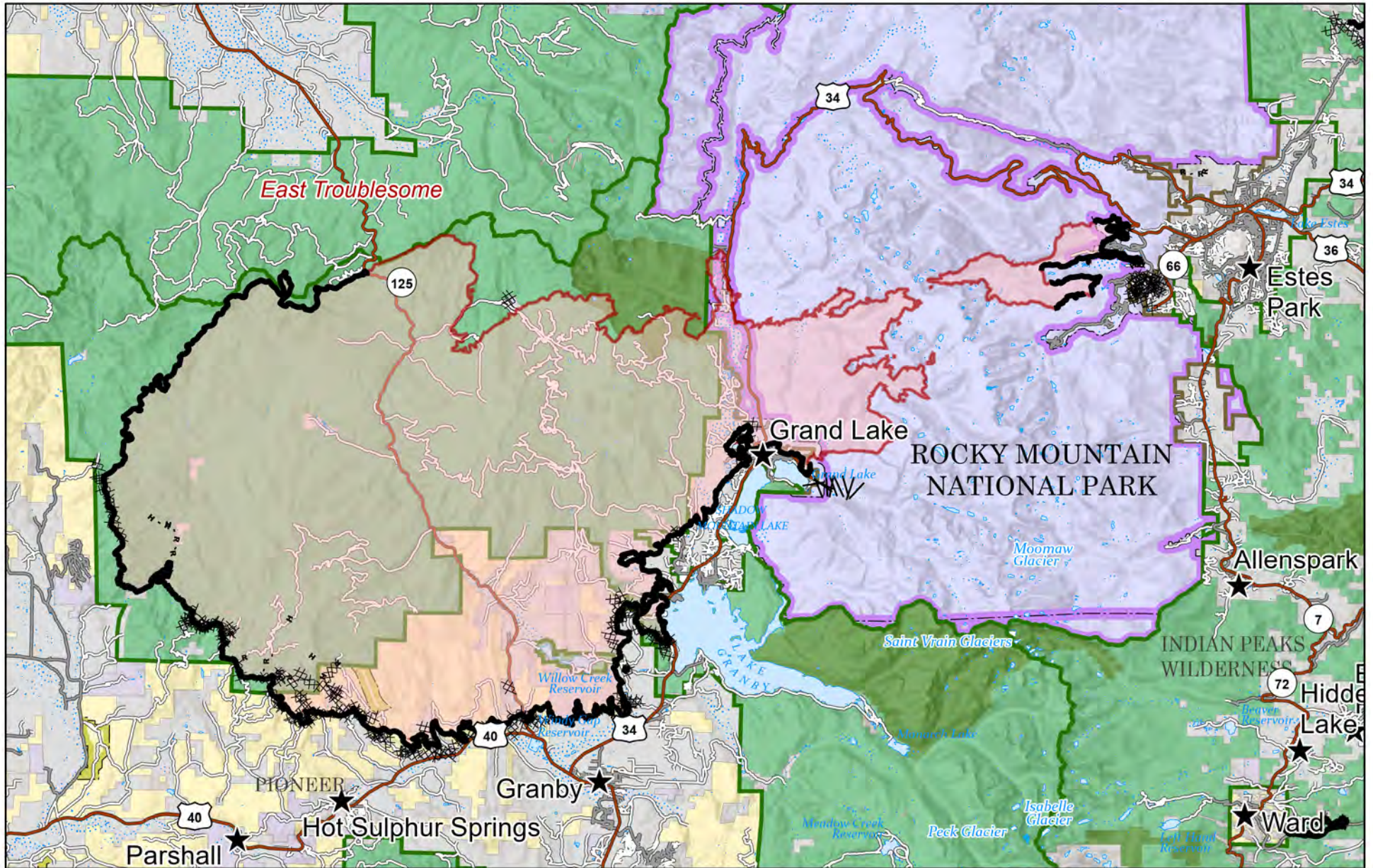


# East Troublesome Fire - Grand and Thompson Zones

November 10, 2020



Fire Perimeter as of  
11/04/20 1850 hrs  
193,812 Acres

- Fire Perimeter
- Contained Line
- Completed Dozer Line
- Completed Hand Line
- | Road as Completed Line
- / Line Break Completed
- Fraser Experimental Forest

- Forest Service
- Bureau of Land Management
- National Park Service
- State|Other or Unknown State Land|State Other or Unknown
- State
- State|State Park and Recreation|State Park
- World Hillshade

