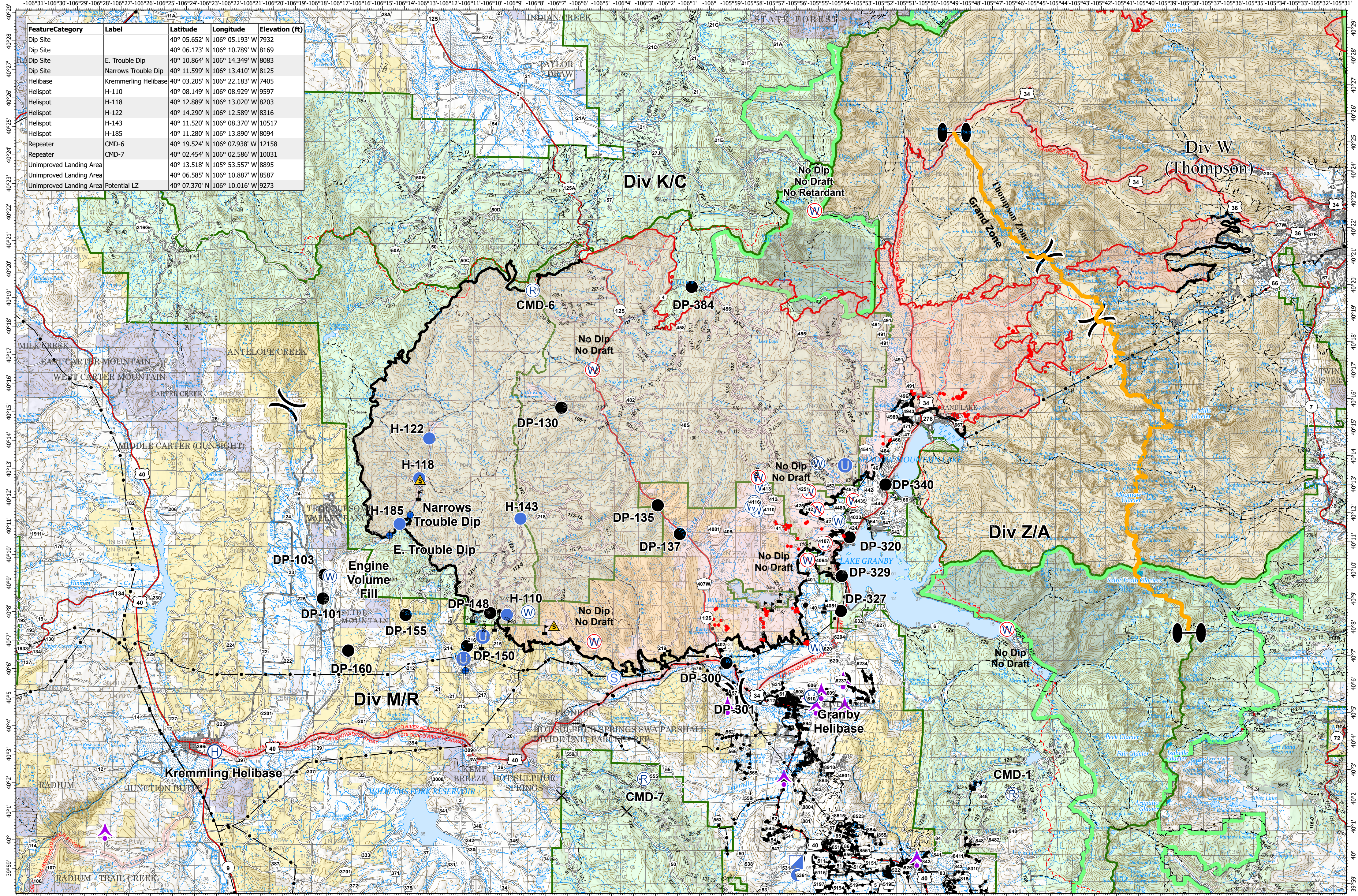


Air Operations - East Troublesome - Grand and Thompson Zones

November 10, 2020



| FeatureCategory | Label | Latitude | Longitude | Elevation (ft) |
|-------------------------|---------------------|---------------|----------------|----------------|
| Dip Site | | 40° 05.652' N | 106° 05.193' W | 7932 |
| Dip Site | | 40° 06.173' N | 106° 10.789' W | 8169 |
| Dip Site | E. Trouble Dip | 40° 10.864' N | 106° 14.349' W | 8083 |
| Dip Site | Narrows Trouble Dip | 40° 11.599' N | 106° 13.410' W | 8125 |
| Helibase | Kremmling Helibase | 40° 03.205' N | 106° 22.183' W | 7405 |
| Helispot | H-110 | 40° 08.149' N | 106° 08.929' W | 9597 |
| Helispot | H-118 | 40° 12.889' N | 106° 13.020' W | 8203 |
| Helispot | H-122 | 40° 14.290' N | 106° 12.589' W | 8316 |
| Helispot | H-143 | 40° 11.520' N | 106° 08.370' W | 10517 |
| Helispot | H-185 | 40° 11.280' N | 106° 13.890' W | 8094 |
| Repeater | CMD-6 | 40° 19.524' N | 106° 07.938' W | 12158 |
| Repeater | CMD-7 | 40° 02.454' N | 106° 02.586' W | 10031 |
| Unimproved Landing Area | | 40° 13.518' N | 105° 53.557' W | 8895 |
| Unimproved Landing Area | | 40° 06.585' N | 106° 10.887' W | 8587 |
| Unimproved Landing Area | Potential LZ | 40° 07.370' N | 106° 10.016' W | 9273 |

EAST TROUBLESOME - GRAND ZONE
 11/04/20 1850 hrs
 193,812 Total Acres
 188,915 Grand Zone
 4,897 Thompson Zone

- IR Isolated Heat
- ✕ Closure
- Ⓜ Helibase
- 🚚 Incident Command Post
- Ⓜ Staging Area
- Ⓜ Value at Risk
- ⚡ Aerial Hazard
- Ⓜ Dip Site
- Ⓜ Unimproved Landing Area
- Ⓜ Repeater
- Ⓜ Water Source
- Ⓜ Division Break
- Drop Point
- ⚠ Safety Zone
- Ⓜ Restricted Water Source
- Ⓜ Wildfire Daily Fire Perimeter

RM Type 3 Team

World Hillshade

0 2.5 5 Miles