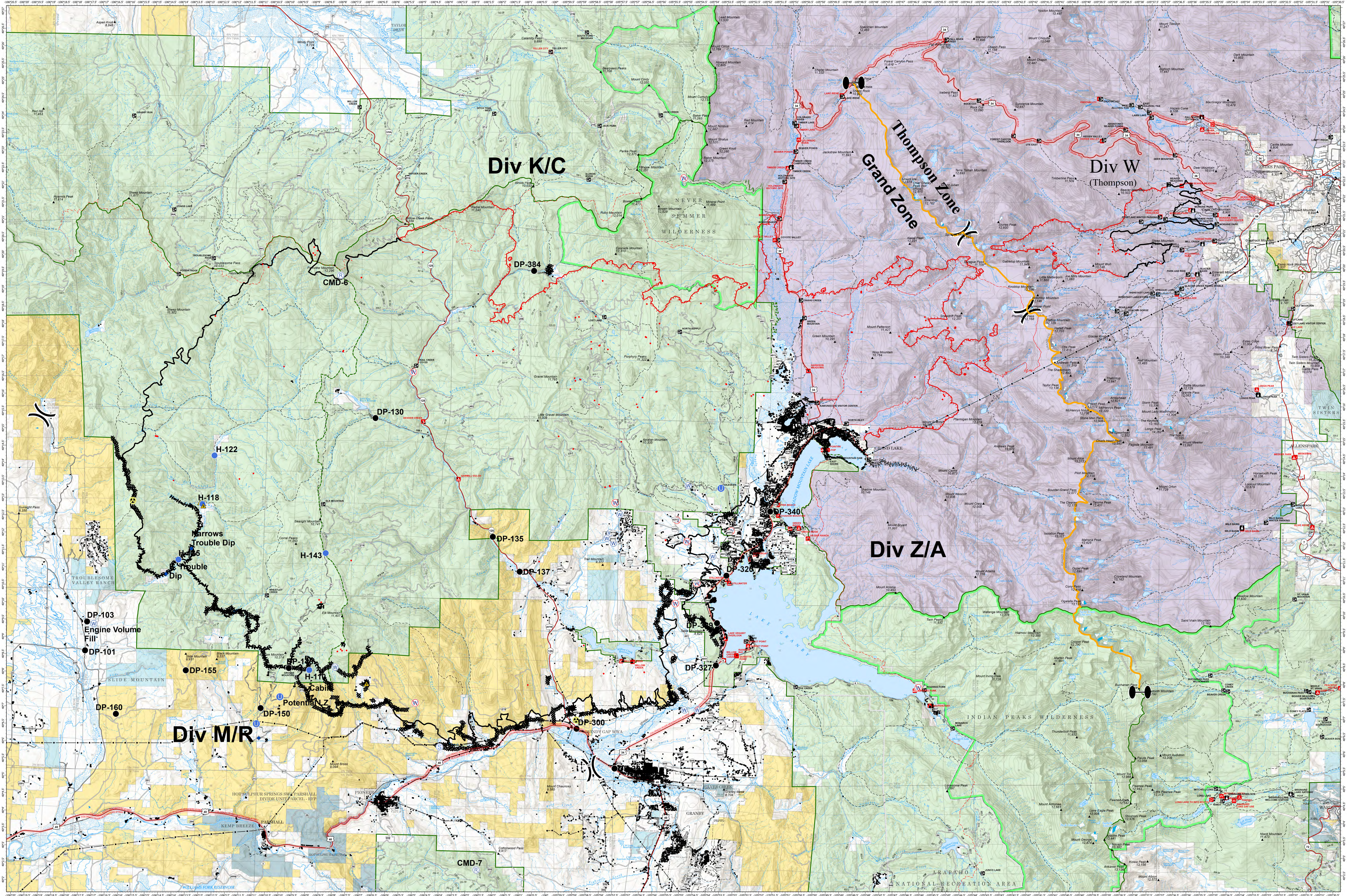


OPERATIONS - EAST TROUBLESOME - GRAND AND THOMPSON ZONE



EAST TROUBLESOME
WY-MRF-000408
 Current as of
 November 11, 2020

11/04/20 1850 hrs
193,812 Total Acres
188,915 Grand Zone
4,897 Thompson Zone

- Dip Site
- Repeater
- Value at Risk
- Contained Line
- IR Isolated Heat
- National Grasslands
- Drop Point
- ▲ Safety Zone
- Zone Break
- Completed Dozer Line
- Surface Management Agency
- Hazard
- Staging Area
-) Division Break
- Completed Hand Line
- Bureau of Land Management
- Unimproved Landing Area
- Water Source
- Road as Completed Line
- Bureau of Reclamation
- Hellsport
- Restricted Water Source
- Uncontrolled Fire Edge
- Line Break Completed
- Indian Reservation
- Military Reservation
- National Park Service
- Other Federal
- Private
- State
- State, County, City; Areas
- Bankhead-Jones Land Use Lands
- US Fish and Wildlife Service
- US Forest Service
- Zone Break
- World Hillshade

0 1 2 3 Miles
 Map Projection: UTM Zone 13, NAD83



RM Type 3 Team