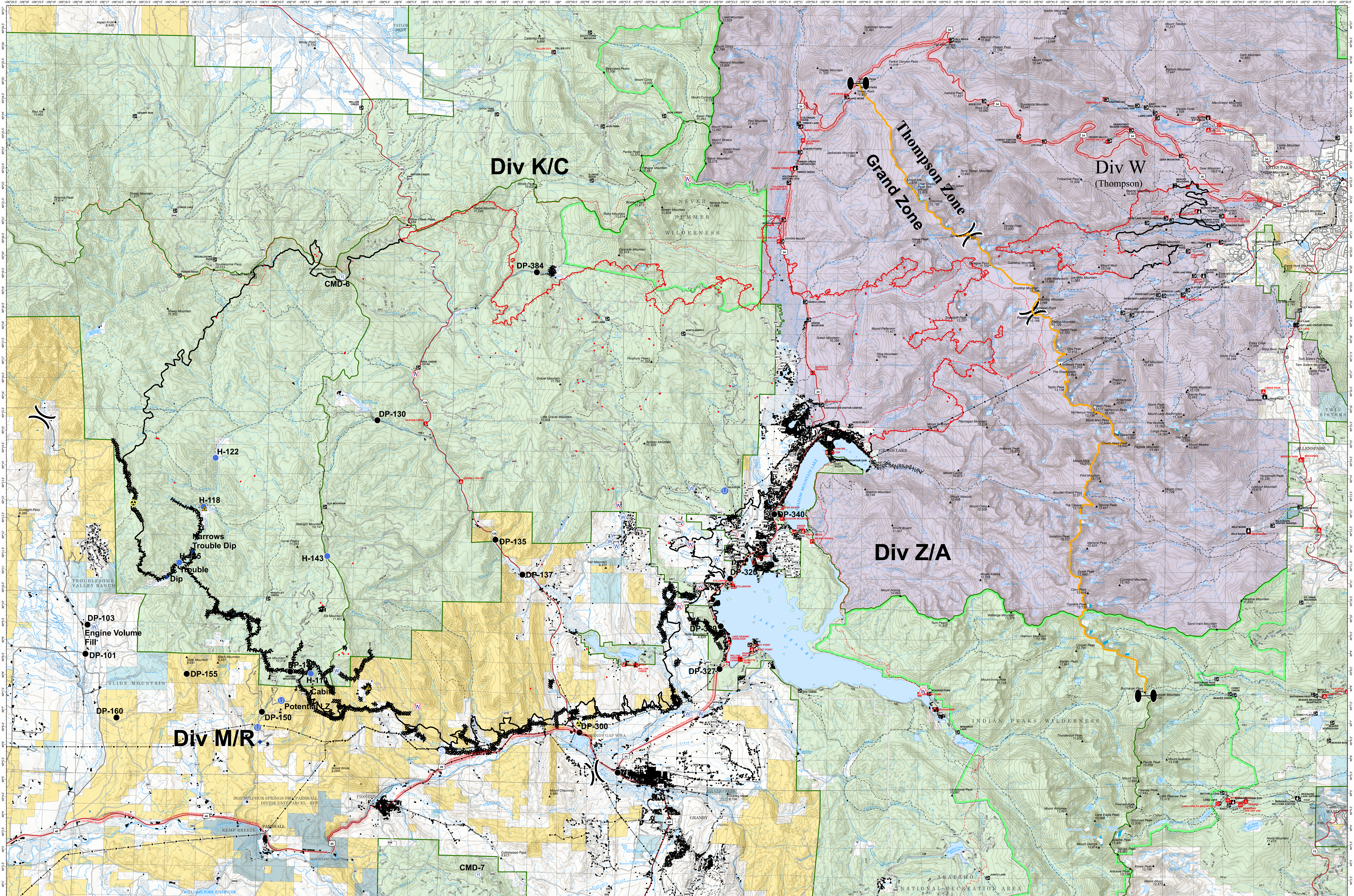


# OPERATIONS - EAST TROUBLESOME - GRAND AND THOMPSON ZONE



**EAST TROUBLESOME**  
**WY-MRF-000408**  
 Current as of  
 November 11, 2020

**11/04/20 1850 hrs**  
**193,812 Total Acres**  
**188,915 Grand Zone**  
**4,897 Thompson Zone**

- ◆ Dip Site
- Drop Point
- ⚠ Hazard
- Unimproved Landing Area
- Helispot
- ⊕ Repeater
- ▲ Safety Zone
- ⊕ Staging Area
- ⊕ Water Source
- ⊕ Restricted Water Source
- Value at Risk
- Zone Break
- ) Division Break
- Uncontrolled Fire Edge
- Contained Line
- Completed Dozer Line
- Completed Hand Line
- Road as Completed Line
- Line Break Completed
- IR Isolated Heat
- Surface Management Agency
- Bureau of Land Management
- Bureau of Reclamation
- Indian Reservation
- Military Reservation
- National Grasslands
- National Park Service
- Other Federal
- Private
- State
- State, County, City; Areas
- Bankhead-Jones Land Use Lands
- US Fish and Wildlife Service
- US Forest Service
- Zone Break
- World Hillshade

Map Scale: 0 1 2 3 Miles

Map Projection: UTM Zone 13, NAD83

**RM Type 3 Team**