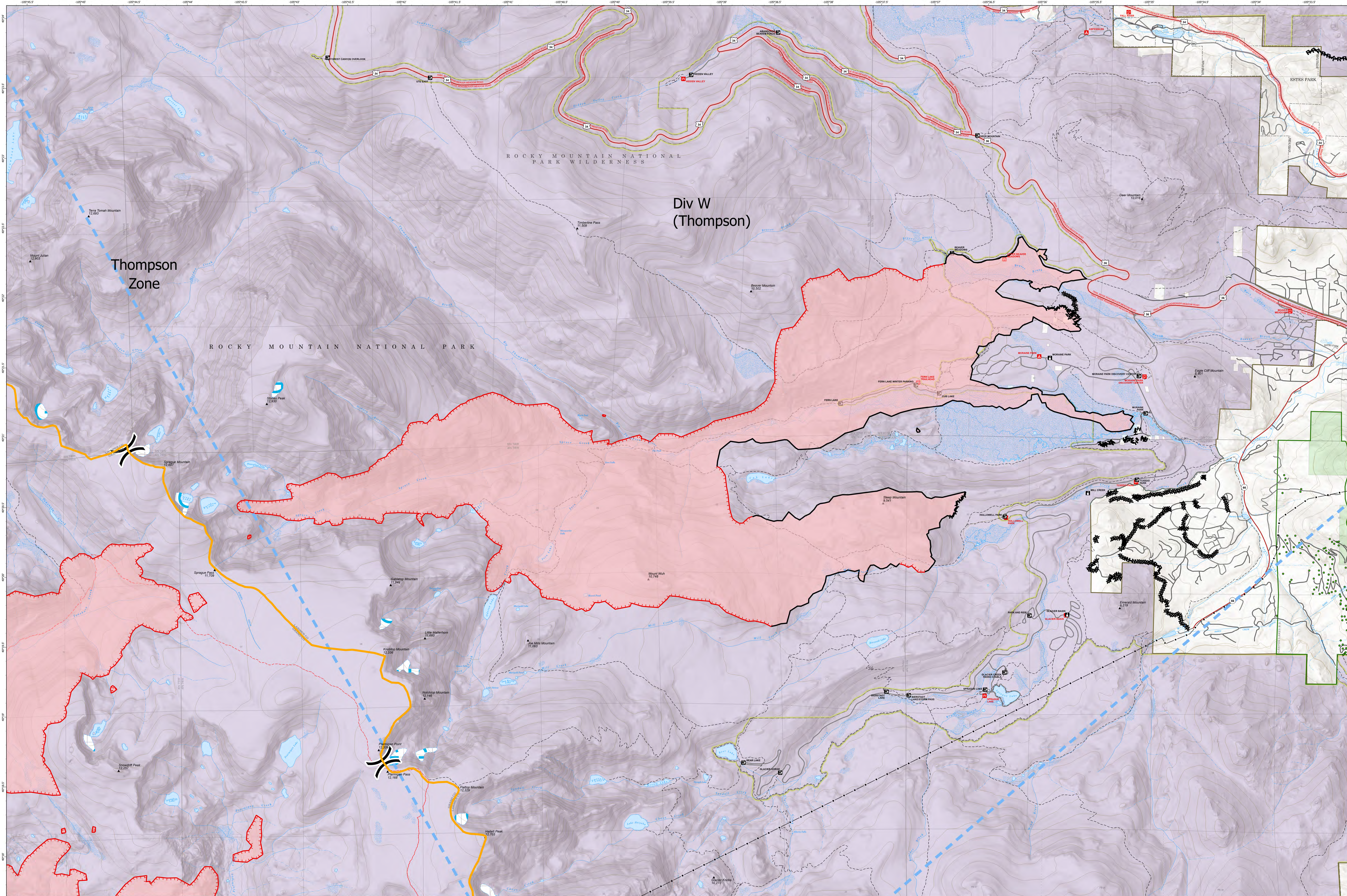


# OPERATIONS - EAST TROUBLESOME - THOMPSON ZONE



**EAST TROUBLESOME**  
**Thompson Zone**  
**WY-MRF-000408**  
 Current as of  
 November 11, 2020

**11/04/20 1850 hrs**  
**193,812 Total Acres**  
**188,915 Grand Zone**  
**4,897 Thompson Zone**

- ZoneBreak
- Division Break
- Uncontrolled Fire Edge
- Contained Line
- Completed Dozer Line
- Completed Hand Line
- Road as Completed Line
- Temporary Flight Restriction
- Wildfire Daily Fire Perimeter
- Power Lines
- NPS Office; Patrol Cabin; Ranger Station
- Campground
- Trailhead
- Visitor Center
- Picnic Area
- Scenic Byways
- FS\_Common\_Unit\_Names
- FS\_Proclaimed\_Forest\_Grassland
- FS\_Administrative\_Forest
- FS\_Ranger\_Districts
- Stream/River; Artificial Path
- Canal / Ditch
- Pipeline
- Pipeline Underground
- Stream/River Intermittent
- Bureau of Land Management
- National Park Service
- Private
- US Forest Service
- World Hillshade

0 1 Miles  
 Map Projection: UTM Zone 13, NAD83

N

**RM Type 3 Team**