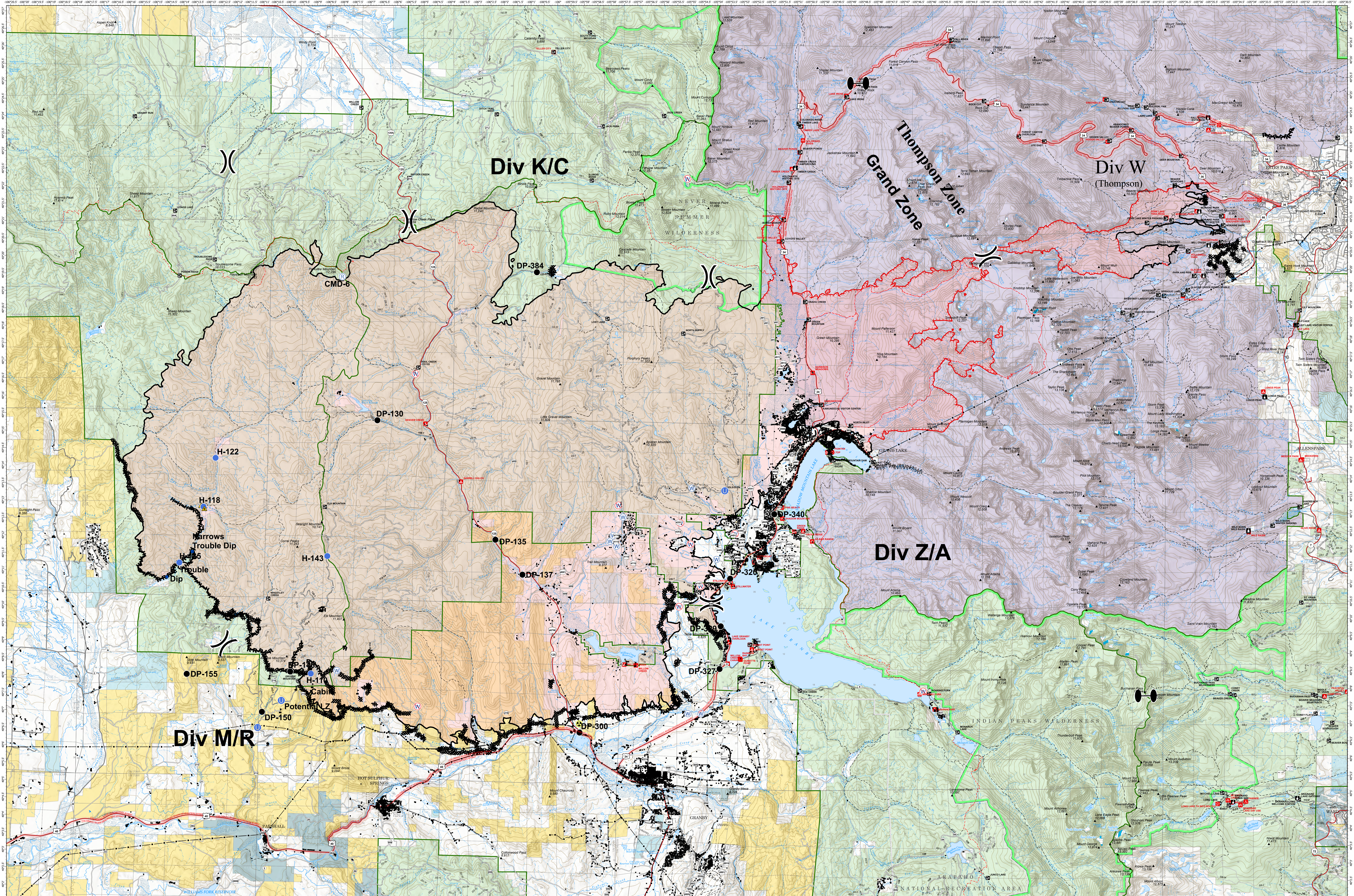


OPERATIONS - EAST TROUBLESOME - GRAND AND THOMPSON ZONE



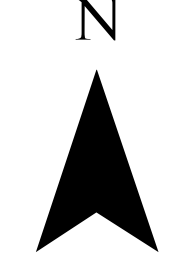
EAST TROUBLESOME
WY-MRF-000408

11/4/20 1850 hrs
193,812 Total Acres
188,915 Grand Zone
4,897 Thompson Zone

Current as of
November 23, 2020

- ◆ Dip Site
- Drop Point
- ☠ Hazard
- Unimproved Landing Area
- Helispot
- Repeater
- ▲ Safety Zone
- Water Source
- Restricted Water Source
- ⚡ Value at Risk
- Zone Break
- X Division Break
- Uncontrolled Fire Edge
- Contained Line
- Completed Dozer Line
- Completed Hand Line
- Road as Completed Line
- Line Break Completed
- Surface Management Agency
- Bureau of Land Management
- Bureau of Reclamation
- Indian Reservation
- Military Reservation
- National Grasslands
- National Park Service
- Other Federal
- Private
- State
- State, County, City; Areas
- Bankhead-Jones Land Use Lands
- US Fish and Wildlife Service
- US Forest Service
- World Hillshade

0 1 2 3 Miles
Map Projection: UTM Zone 13, NAD83



RM Type 3
Team