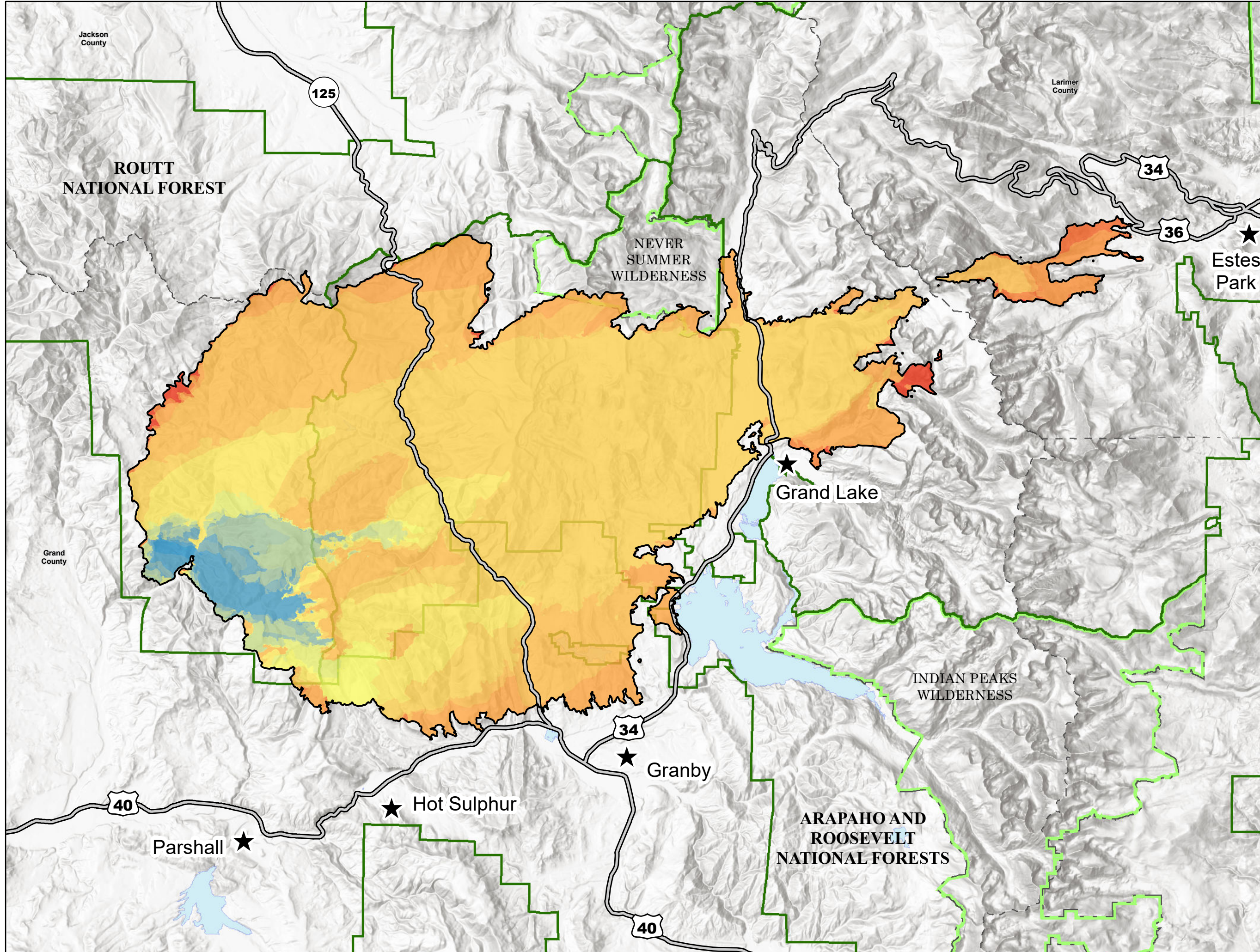


**East Troublesome  
WY-MRF-000408  
PROGRESSION MAP**

11/23/2020

**Final Perimeter  
193,812 Total Acres**

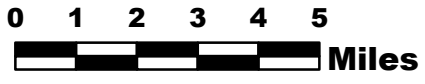


**East Troublesome Progression**

| Color              | Date/Time    | Daily Growth     | Total Acres      |
|--------------------|--------------|------------------|------------------|
| Blue               | 10-14 @ 1821 | 388 growth ac    | 388 total ac     |
| Light Blue         | 10-15 @ 1014 | 3,301 growth ac  | 3,689 total ac   |
| Teal               | 10-15 @ 1103 | 885 growth ac    | 4,574 total ac   |
| Green-Teal         | 10-15 @ 1831 | 1,098 growth ac  | 5,672 total ac   |
| Light Green        | 10-16 @ 1140 | 1,021 growth ac  | 6,693 total ac   |
| Green              | 10-16 @ 1510 | 2,169 growth ac  | 8,862 total ac   |
| Light Yellow-Green | 10-16 @ 1830 | 2,466 growth ac  | 11,328 total ac  |
| Yellow-Green       | 10-17 @ 1110 | 1,317 growth ac  | 12,631 total ac  |
| Yellow             | 10-18 @ 2121 | 768 growth ac    | 13,400 total ac  |
| Light Yellow       | 10-19 @ 2020 | 2,137 growth ac  | 15,537 total ac  |
| Yellow             | 10-20 @ 1714 | 3,020 growth ac  | 18,550 total ac  |
| Light Orange       | 10-21 @ 1820 | 20,197 growth ac | 38,496 total ac  |
| Orange             | 10-22 @ 1230 | 87,093 growth ac | 125,588 total ac |
| Light Orange       | 10-22 @ 1535 | 44,178 growth ac | 169,766 total ac |
| Orange             | 10-23 @ 1333 | 18,198 growth ac | 187,964 total ac |
| Dark Orange        | 10-24 @ 1218 | 2,075 growth ac  | 189,534 total ac |
| Red-Orange         | 10-24 @ 1240 | 1,570 growth ac  | 191,465 total ac |
| Red                | 10-24 @ 1702 | 984 growth ac    | 192,445 total ac |
| Dark Red           | 10-26 @ 1900 | 12 growth ac     | 192,457 total ac |
| Red                | 10-27 @ 1354 | 1,317 growth ac  | 193,774 total ac |
| Dark Red           | 10-31 @ 2145 | 38 growth ac     | 193,812 total ac |

\*\*Fire Perimeter Acres updated to reflect better data, no growth since 10/31/20. Latest flight 11/4/2020

- Wilderness
- County
- FS Boundary
- Reservoir



**RM Type 3  
Team**