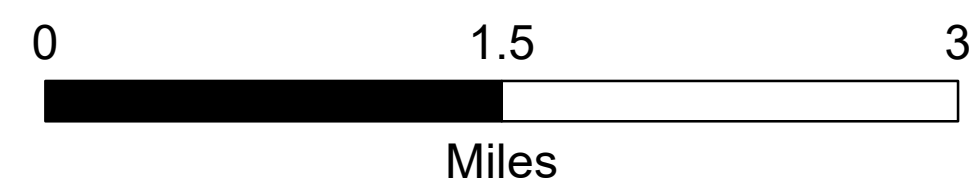


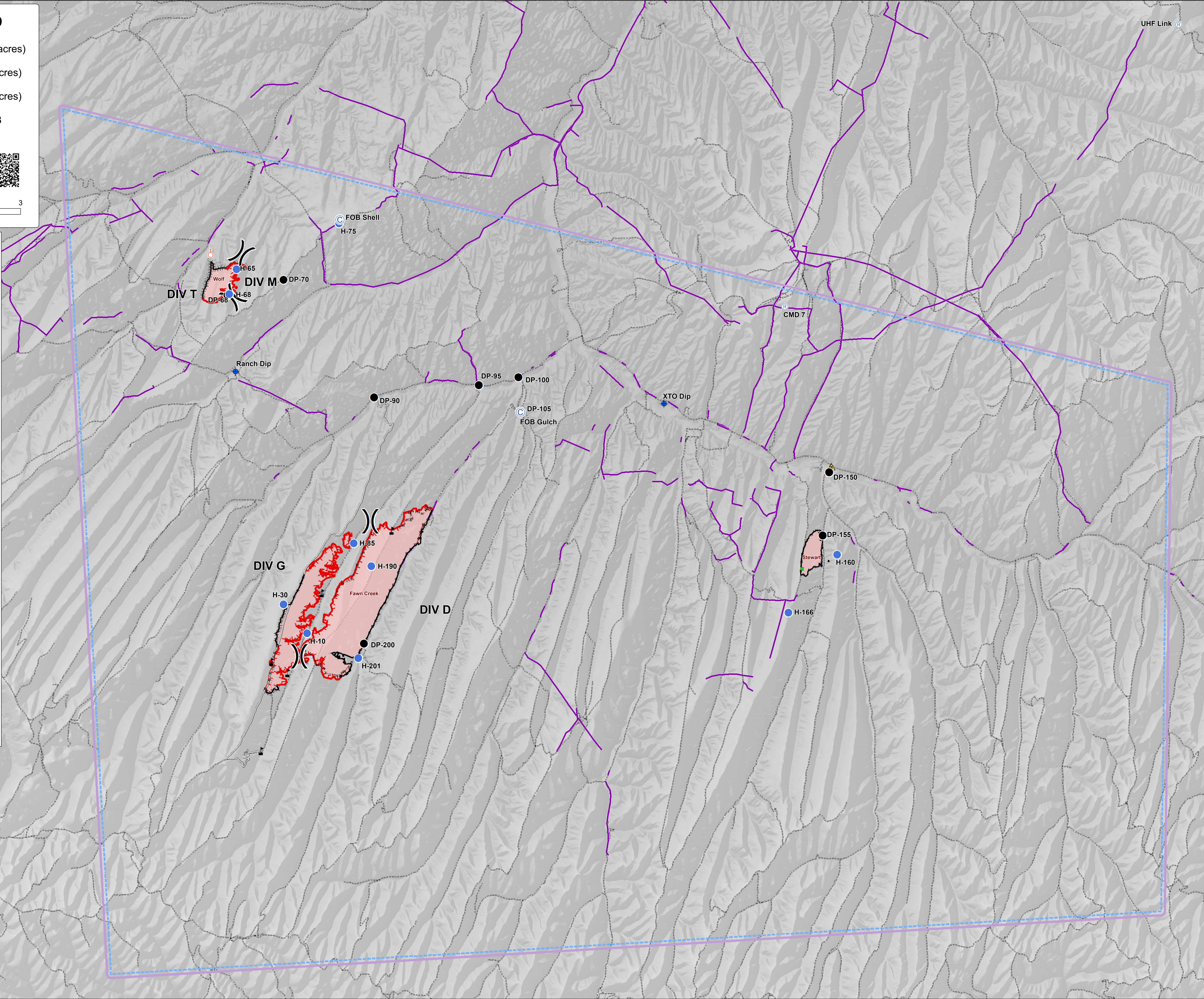
Pilot Map

Fawn Creek
CO-WRD 000166 (3,273 acres)
Stewart
CO-WRD 000165 (212 acres)
Wolf
CO-WRD 000186 (274 acres)

IR 7/16/2020 @ 2218
07/18/2020 day



- Camp
- Dip Site
- Drop Point
- Helispot
- Landmark
- Repeater
- Safety Zone
- Spot Fire
- Value at Risk
- Division Break
- Uncontrolled Fire Edge
- Contained Line
- Completed Dozer Line
- Completed Hand Line
- Road as Completed Line
- Access or Improved Road
- Line Break Completed
- Proposed Burnout
- Air Tanker Retardant
- Fence
- Temporary Flight Restriction
- Powerlines
- Local or 4WD road
- Wildfire Daily Fire Perimeter



UHF Link

CMD 7

FOB Shell
H-75

DIV T

Ranch Dip

DP-95

DP-100

XTO Dip

DP-105
FOB Gulch

DP-150

DIV G

H-30

H-85

H-190

DIV D

H-10

DP-200

H-201

Fawn Creek

Stewart

DP-155

H-160

H-166

IncidentName	FeatureCategory	Label	LatWGS84_DDM	LongWGS84_DDM	Comments
Fawn Creek	Camp	FOB Gulch	39° 50.870'	-108° 18.697'	Fawn Spike
Fawn Creek	Dip Site	XTO Dip	39° 50.947'	-108° 15.080'	
Fawn Creek	Drop Point	DP - 90	39° 51.240'	-108° 22.364'	
Fawn Creek	Drop Point	DP - 95	39° 51.411'	-108° 19.719'	
Fawn Creek	Drop Point	DP - 100	39° 51.547'	-108° 18.716'	
Fawn Creek	Drop Point	DP - 105	39° 50.878'	-108° 18.695'	
Fawn Creek	Drop Point	DP-200	39° 46.472'	-108° 22.801'	
Fawn Creek	Helispot	H-10	39° 46.708'	-108° 24.225'	Div G, Type 2, open pasture south end Eureka Creek
Fawn Creek	Helispot	H-30	39° 47.278'	-108° 24.793'	Div G, Type 2, open grass near oil tank on ridge
Fawn Creek	Helispot	H-85	39° 48.422'	-108° 22.980'	Div G, Type 2, open pasture north end Eureka Creek
Fawn Creek	Helispot	H-190	39° 47.968'	-108° 22.557'	Div D, Type 2, burnt area on ridge, dusty
Fawn Creek	Helispot	H-201	39° 46.196'	-108° 22.950'	Div D, Type 2, open pasture near DP-200
Fawn Creek	Repeater	CMD 7	39° 52.757'	-108° 11.962'	
Fawn Creek	Repeater	UHF Link	39° 57.973'	-108° 1.817'	
Fawn Creek	Value at Risk		39° 47.479'	-108° 23.817'	Log cabin, outbuildings and vehicles
Fawn Creek	Value at Risk		39° 45.949'	-108° 24.731'	Structure. Good defensible space
Fawn Creek	Value at Risk		39° 44.447'	-108° 25.463'	Log cabin and outbuilding
Fawn Creek	Value at Risk		39° 48.649'	39° 48.649'	Oil and gas facility
Fawn Creek	Value at Risk		39° 44.449'	-108° 25.456'	Log Cabin and 2 outbuildings
Fawn Creek	Value at Risk		39° 46.171'	-108° 25.135'	Oil and Gas pad with tanks and equipment
Fawn Creek	Value at Risk		39° 47.269'	-108° 24.780'	Oil and gas pad with tanks and equipment
Stewart	Dip Site	Ranch Dip	39° 51.820'	-108° 25.830'	
Stewart	Drop Point	DP-155	39° 48.294'	-108° 11.187'	
Stewart	Helispot	H-160	39° 47.920'	-108° 10.840'	
Stewart	Helispot	H-166	39° 46.827'	-108° 12.110'	Div D, Type 2, open sage ridge, powerlines nearby
Stewart	Drop Point	DP-150	39° 49.518'	-108° 10.976'	
Stewart	Safety Zone		39° 49.616'	-108° 10.923'	
Wolf	Camp	FOB Shell	39° 54.702'	-108° 23.094'	
Wolf	Drop Point	DP-68	39° 53.302'	-108° 25.975'	
Wolf	Drop Point	DP-70	39° 53.568'	-108° 24.554'	
Wolf	Helispot	H-65	39° 53.800'	-108° 25.730'	
Wolf	Helispot	H-68	39° 53.320'	-108° 25.930'	
Wolf	Helispot	H-75	39° 54.632'	-108° 23.114'	Private concrete helipad near what appears an a I dined private facility. Shell oil built. Mahogany Oil?
Wolf	Spot Fire		39° 54.094'	-108° 26.380'	Could be a separate fire (lightning strike)