

# DIV - Z Operations Map

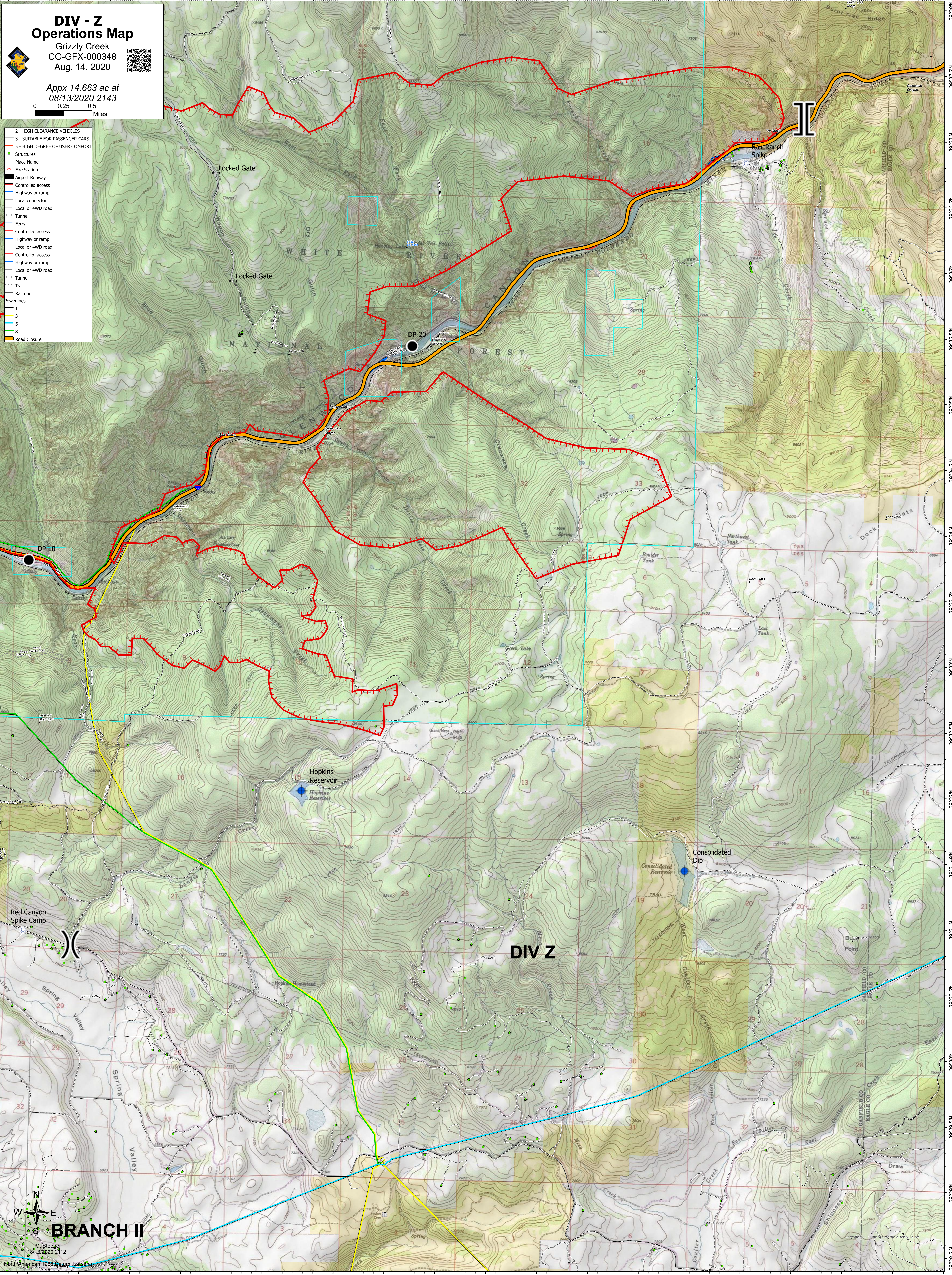
Grizzly Creek  
CO-GFX-000348  
Aug. 14, 2020



Appx 14,663 ac at  
08/13/2020 2143

0 0.25 0.5  
Miles

- 2 - HIGH CLEARANCE VEHICLES
- 3 - SUITABLE FOR PASSENGER CARS
- 5 - HIGH DEGREE OF USER COMFORT
- Structures
- Place Name
- Fire Station
- Airport Runway
- Controlled access
- Highway or ramp
- Local connector
- Local or 4WD road
- Tunnel
- Ferry
- Controlled access
- Highway or ramp
- Local or 4WD road
- Controlled access
- Highway or ramp
- Local or 4WD road
- Tunnel
- Trail
- Railroad
- Powerslines
- 1
- 3
- 5
- 8
- Road Closure



BRANCH II

DIV Z

North American 1983 Datum, Lantlog