

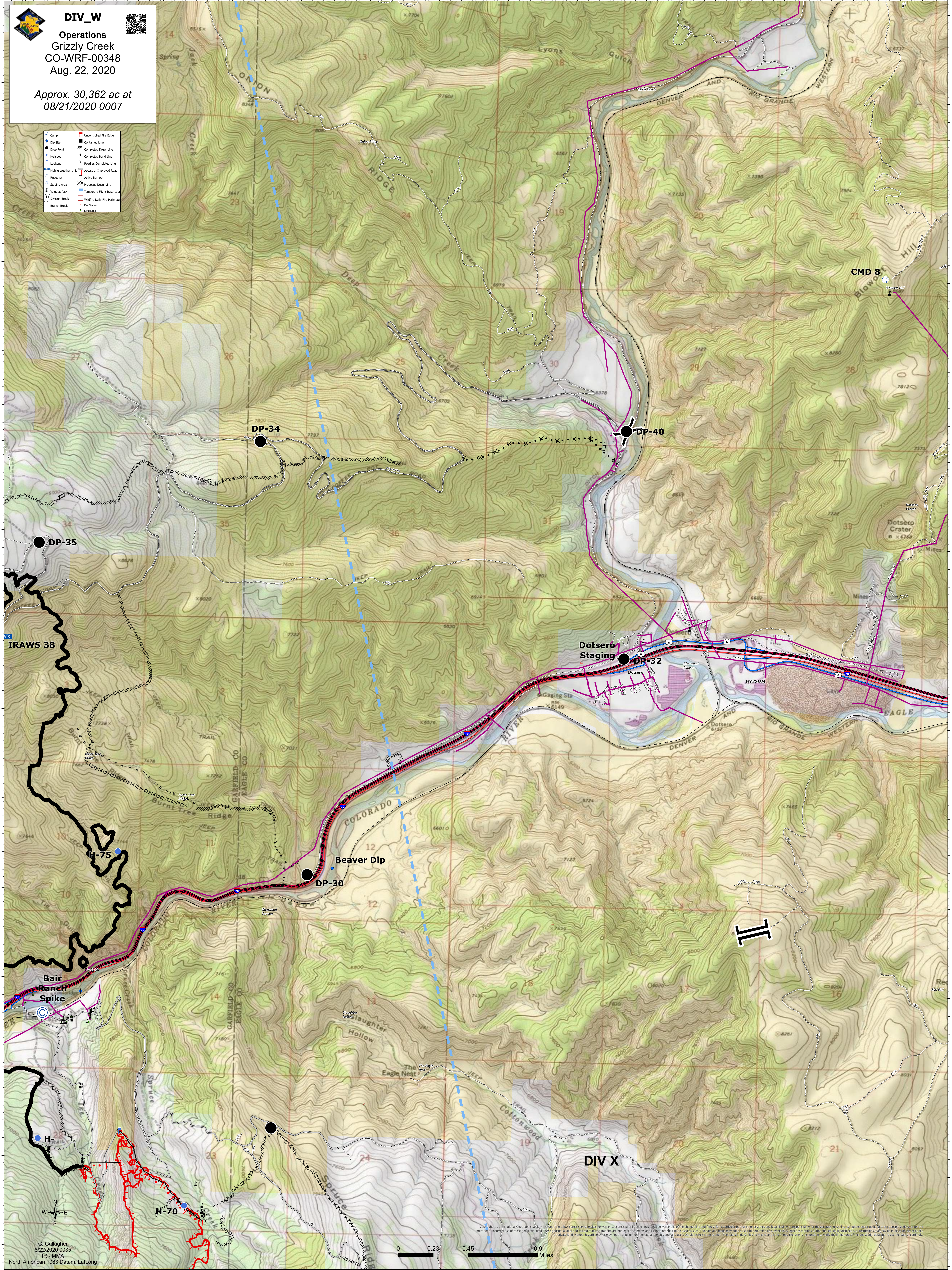


DIV_W

Operations
Grizzly Creek
CO-WRF-00348
Aug. 22, 2020

Approx. 30,362 ac at
08/21/2020 0007

- Camp
- Dip Site
- Drop Point
- Helispot
- Lookout
- Mobile Weather Unit
- Repeater
- Staging Area
- Value at Risk
- Division Break
- Branch Break
- Uncontrolled Fire Edge
- Contained Line
- Completed Dozer Line
- Completed Hand Line
- Road as Completed Line
- Access or Improved Road
- Active Burnout
- Proposed Dozer Line
- Temporary Flight Restriction
- Wildfire Daily Fire Perimeter
- Fire Station
- Structure



C. Gallagher
8/22/2020 0035
IR - MMA
North American 1983 Datum, Lallong

0 0.23 0.45 0.9 Miles

Copyright © 2010 National Geographic Society. All rights reserved. This content does not constitute a warranty or any other statement of fact. The user is responsible for the accuracy of the data and for any use of the data. The user is responsible for the accuracy of the data and for any use of the data.