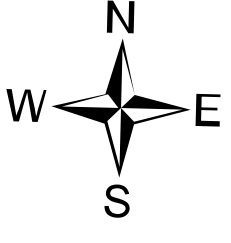




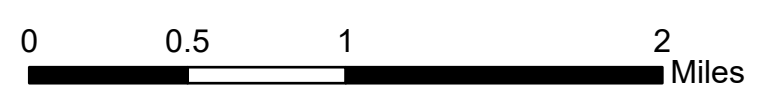
# Structure Protection



Grizzly Creek  
CO-WFR-00348  
Aug. 20, 2020



Approx. 29,992 ac at  
08/21/2020 0007



**Legend**

**WRNF Roads**  
OPERATIONAL MAINTENANCE LEVEL  
 --- 1 - BASIC CUSTODIAL CARE (CLOSED)  
 --- 2 - HIGH CLEARANCE VEHICLES  
 --- 3 - SUITABLE FOR PASSENGER CARS  
 --- 4 - MODERATE DEGREE OF USER COMFORT  
 --- 5 - HIGH DEGREE OF USER COMFORT

**2020\_GISS\_Edit**  
 Garfield County Structures

**Accountable Property**  
 Pump  
 Water Tank

**Event Point**  
 Camp  
 Dip Site  
 Drop Point  
 Dozer Push  
 Fence - Cut/Damaged  
 Gate  
 Helibase  
 Helispot  
 Lookout  
 Mobile Weather Unit  
 Repair Point  
 Repeater  
 Retardant/Mud Pit  
 Safety Zone  
 Staging Area  
 Water Source

**Value at Risk**  
 Other

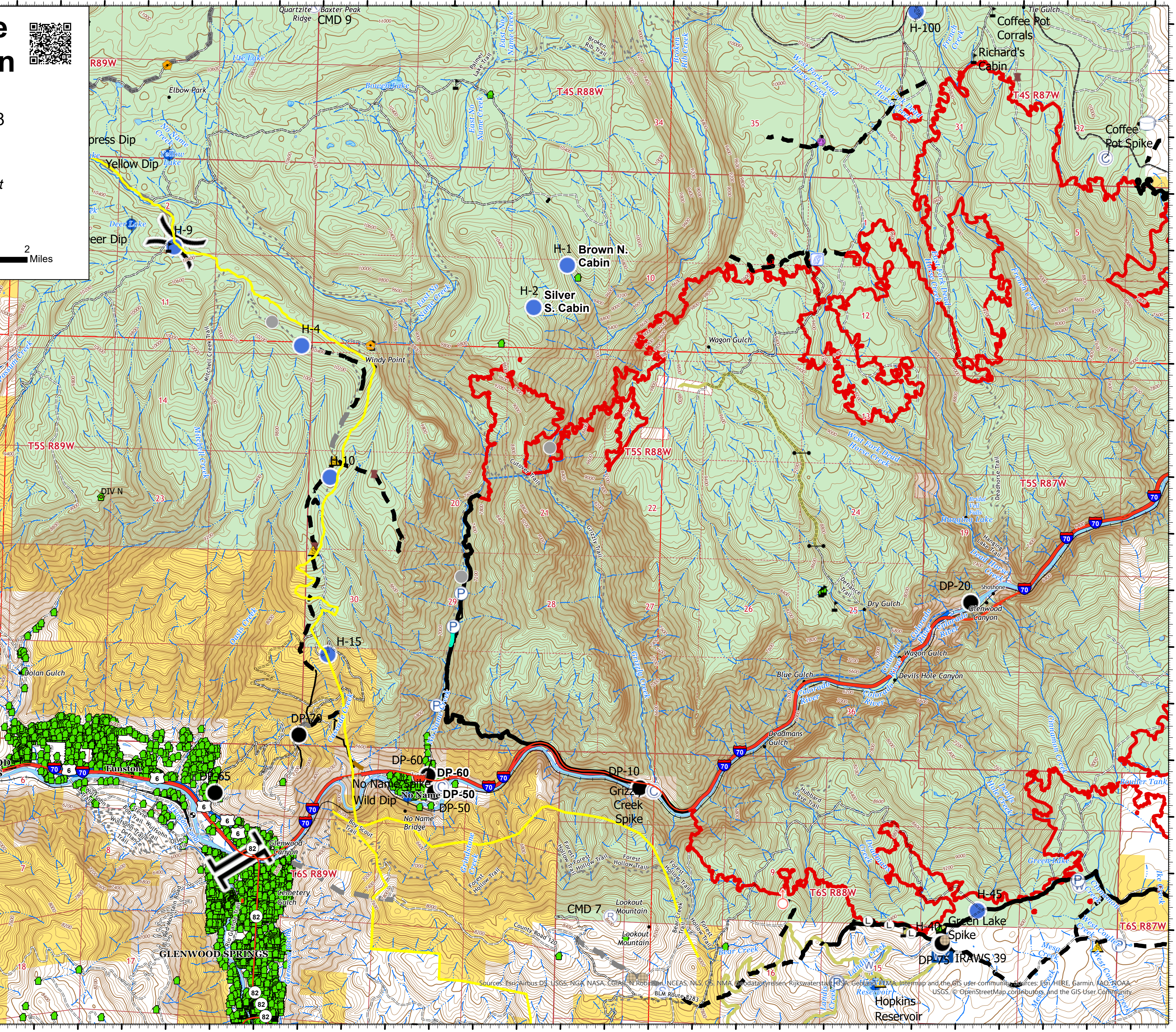
**Division Break**  
 Branch Break

**Event Line**  
 Uncontrolled Fire Edge  
 Completed Plow Line  
 Completed Hand Line  
 Completed Burnout  
 Active Burnout  
 Road as Completed Line  
 Access or Improved Road  
 Completed Dozer Line  
 Proposed Dozer Line  
 Planned Secondary Line  
 Ridge/Geographic Feature

**Transportation**  
 Other Road  
 Controlled access  
 Highway or ramp  
 Local connector  
 Local or 4WD road  
 Tunnel  
 Ferry

**USFS Road**  
 Controlled access  
 Highway or ramp  
 Local or 4WD road  
 Tunnel  
 Trail

**Land Ownership**  
 Forest Service  
 Bureau of Land Management  
 Private



M. Stoerber  
8/21/2020 2308  
North American 1983 Datum, Lat/Long  
Grid

Sources: Esri, Airbus DS, USGS, NGA, NASA, CGIAR, N. Robinson, NCEAS, NLS, CS, NMA, Geodatastyrelsen, Rijkswaterstaat, ESA, Copernicus, NOAA, Reservoir, USGS, OpenStreetMap contributors, and the GIS User Community