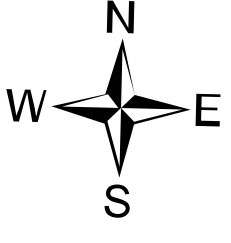


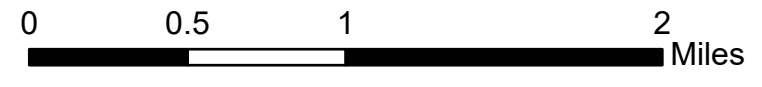


Structure Protection

Grizzly Creek
CO-WFR-00348
Aug. 20, 2020



Approx. 29,992 ac at
08/21/2020 0007



Legend

WRNF Roads
OPERATIONAL MAINTENANCE LEVEL
 - - - 1 - BASIC CUSTODIAL CARE (CLOSED)
 - - - 2 - HIGH CLEARANCE VEHICLES
 - - - 3 - SUITABLE FOR PASSENGER CARS
 - - - 4 - MODERATE DEGREE OF USER COMFORT
 - - - 5 - HIGH DEGREE OF USER COMFORT

2020_GISS_Edit
 Garfield County Structures

Accountable Property
 Pump
 Water Tank

Event Point
 Camp
 Dip Site
 Drop Point
 Dozer Push
 Fence - Cut/Damaged
 Gate
 Helibase
 Helispot
 Lookout
 Mobile Weather Unit
 Repair Point
 Repeater
 Retardant/Mud Pit
 Safety Zone
 Staging Area
 Water Source

Value at Risk
 Other

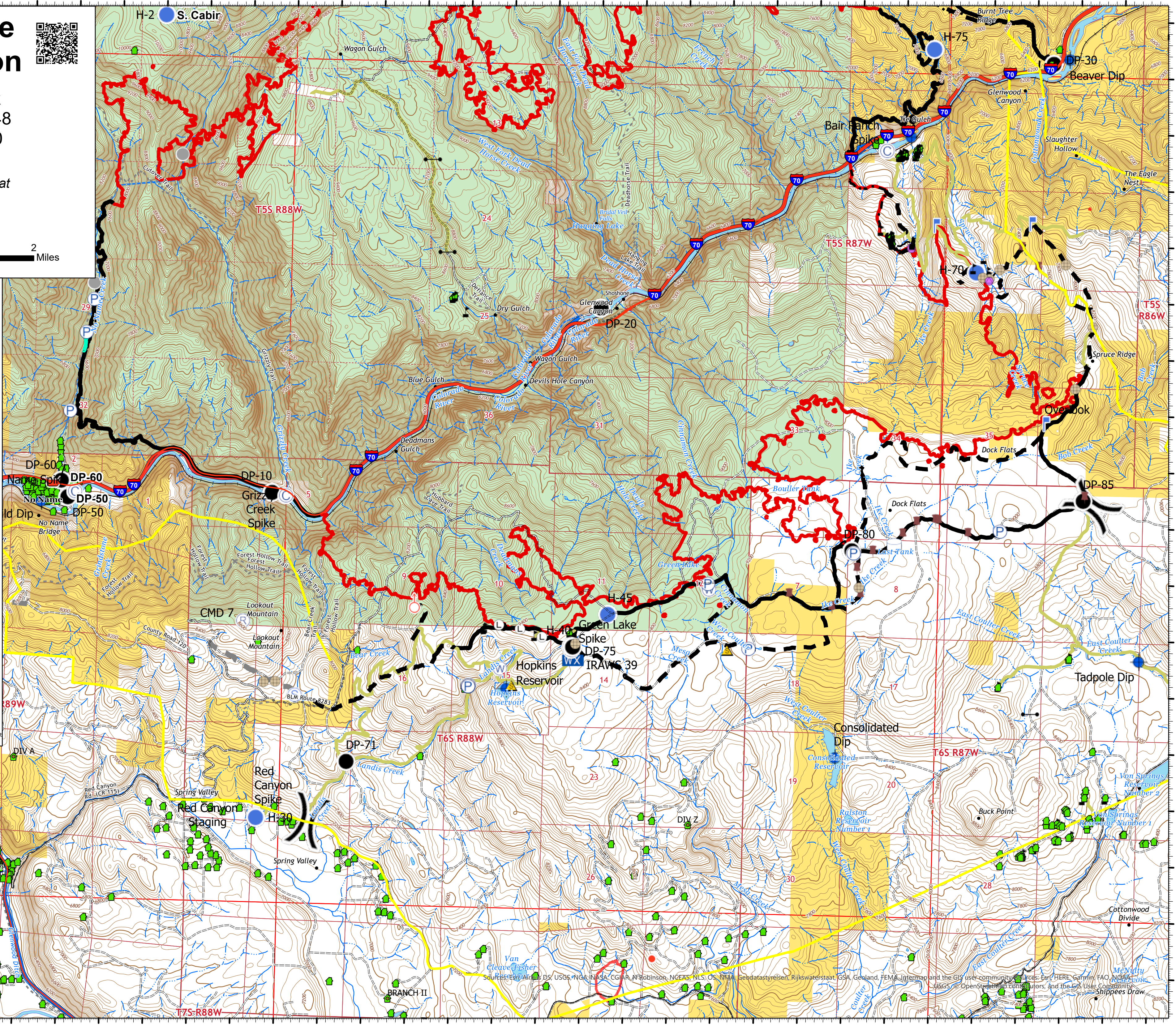
Division Break

Branch Break

Event Line
 Uncontrolled Fire Edge
 Completed Plow Line
 Completed Hand Line
 Completed Burnout
 Active Burnout
 Road as Completed Line
 Access or Improved Road
 Completed Dozer Line
 Proposed Dozer Line
 Planned Secondary Line
 Ridge/Geographic Feature

Transportation
Other Road
 Controlled access
 Highway or ramp
 Local connector
 Local or 4WD road
 Tunnel
 Ferry
USFS Road
 Controlled access
 Highway or ramp
 Local or 4WD road
 Tunnel
 Trail

Land Ownership
 Forest Service
 Bureau of Land Management
 Private



Inset Map

M. Stoerber
8/21/2020 2307

North American 1983 Datum, Lat/Long Grid