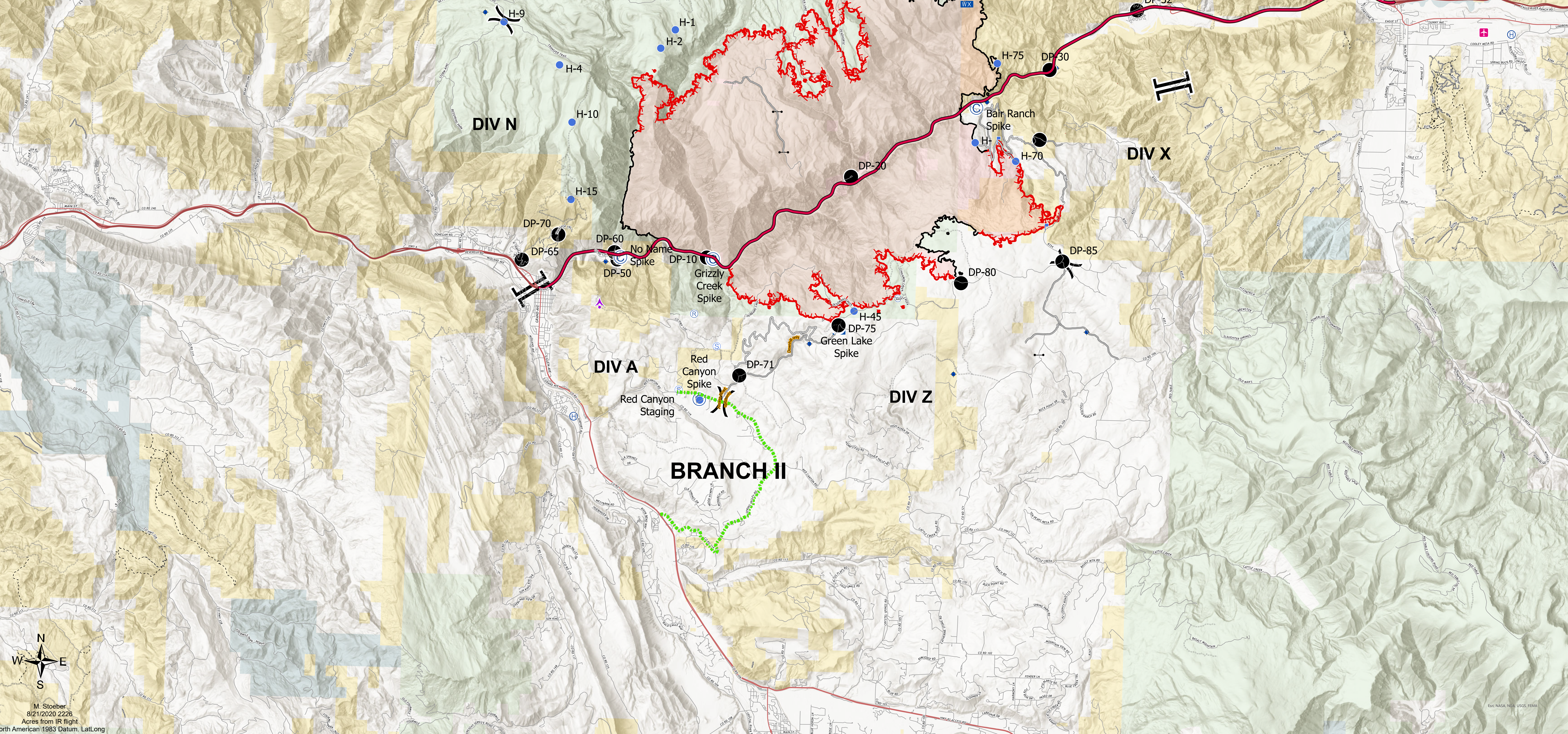


Transportation
Grizzly Creek
CO-GFX-00348
Aug. 22, 2020

*Est. 30,362ac at
 08/21/2020 0007*

0 0.5 1 2 Miles

- Aerial Hazard
- Airstrip or Airport
- Camp
- Drop Site
- Drop Point
- Gate
- Helibase
- Helipad
- Lookout
- Mobile Weather Unit
- Repeater
- National Guard Post
- Staging Area
- Water Source
- Division Break
- Branch Break
- Uncontrolled Fire Edge
- Contained Line
- Access or Improved Road
- Wildfire Daily Fire Perimeter
- RedCanyonSp. Route
- Road Closure
- RedCanyonSp. Route
- Forest Service
- Bureau of Land Management
- Private
- State, County, City, Areas
- State
- Closed to Motorized and Mechanized
- Open for Administrative Purpose Only
- Open to ATV (<50 lb), Motorcycles, Bikes, Hikers, & Equestrians
- Open to Motorcycles, Bikes, Hikers, & Equestrians
- Open to all Modes of Transportation
- Expressway
- Secondary Hwy
- Local Road
- Ramp
- W/D
- Tunnel



M. Stoeber
 8/21/2020 2226
 Acres from IR flight
 North American 1983 Datum, LatLong
 Grid