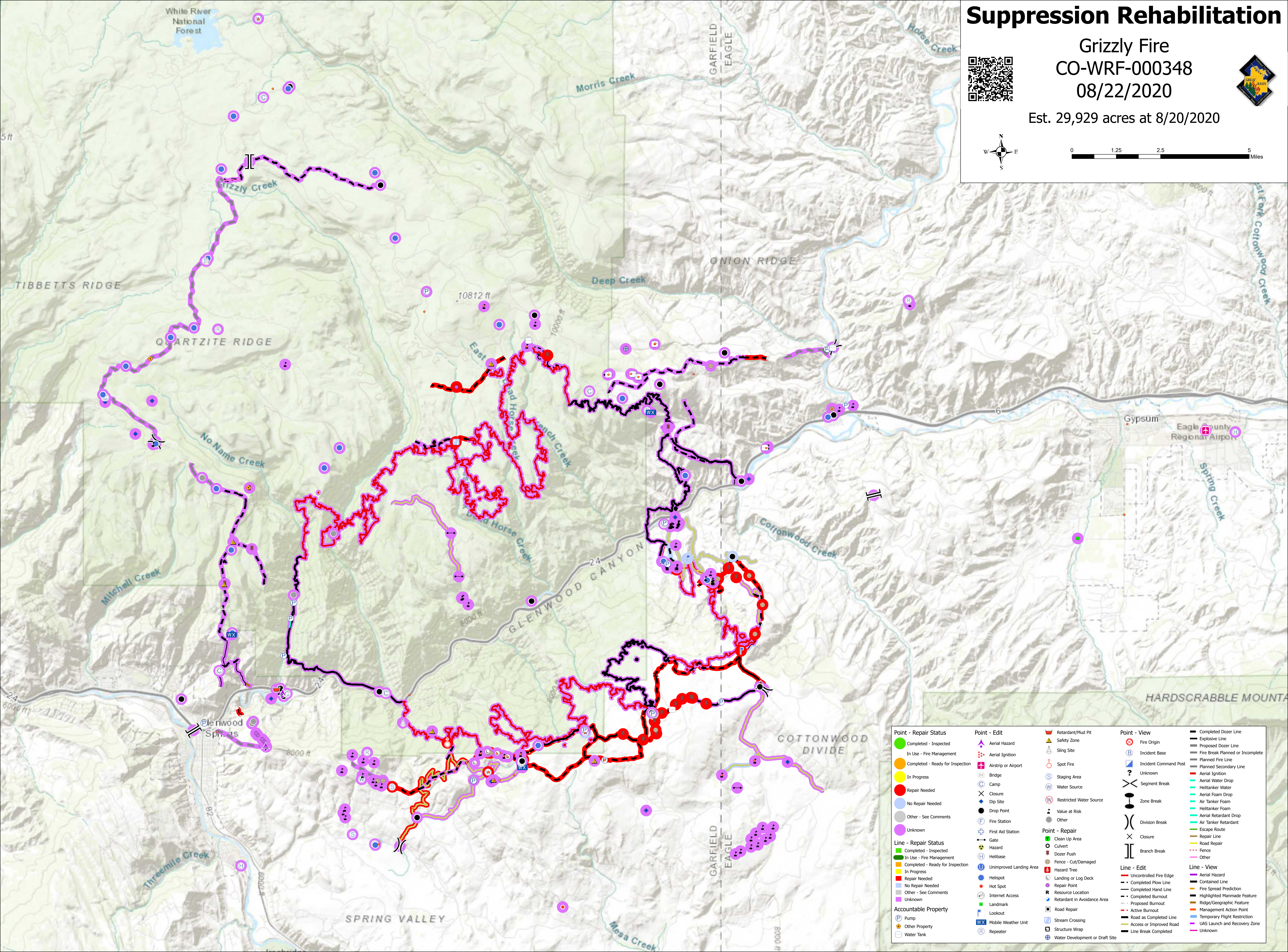
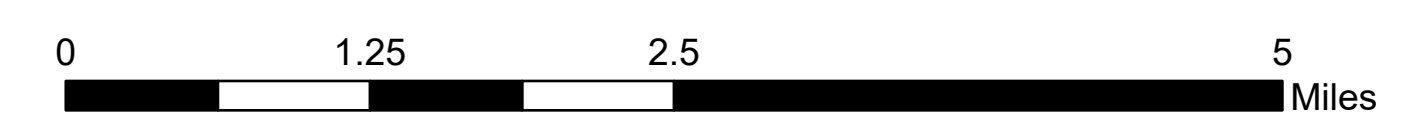
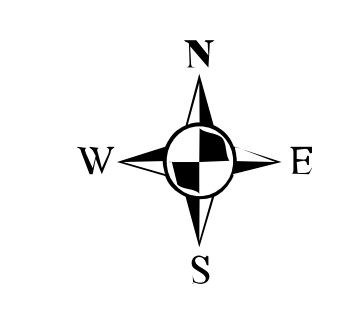


Suppression Rehabilitation

Grizzly Fire
CO-WRF-000348
08/22/2020

Est. 29,929 acres at 8/20/2020



Point - Repair Status <ul style="list-style-type: none">Completed - InspectedIn Use - Fire ManagementCompleted - Ready for InspectionIn ProgressRepair NeededNo Repair NeededOther - See CommentsUnknown	Point - Edit <ul style="list-style-type: none">Aerial HazardAerial IgnitionAirstrip or AirportBridgeClosureDip SiteDrop PointFire StationFirst Aid StationGateHazardHelibaseUnimproved Landing AreaHelispotHot SpotInternet AccessLandmarkLookoutMobile Weather UnitRepeater	Point - Repair <ul style="list-style-type: none">Clean Up AreaCulvertDozer PushFence - Cut/DamagedHazard TreeLanding or Log DeckRepair PointResource LocationRetardant in Avoidance AreaRoad RepairStream CrossingStructure WrapWater Development or Draft Site	Point - View <ul style="list-style-type: none">Fire OriginIncident BaseIncident Command PostUnknownSegment BreakZone BreakDivision BreakClosureBranch Break	Line - Repair Status <ul style="list-style-type: none">Completed - InspectedIn Use - Fire ManagementCompleted - Ready for InspectionIn ProgressRepair NeededNo Repair NeededOther - See CommentsUnknown	Line - Edit <ul style="list-style-type: none">Uncontrolled Fire EdgeCompleted Plow LineCompleted Hand LineCompleted BurnoutProposed BurnoutActive BurnoutRoad as Completed LineAccess or Improved RoadLine Break Completed	Line - View <ul style="list-style-type: none">Completed Dozer LineExplosive LineProposed Dozer LineFire Break Planned or IncompletePlanned Fire LinePlanned Secondary LineAerial IgnitionAerial Water DropHelitanker WaterAerial Foam DropAir Tanker FoamHelitanker FoamAerial Retardant DropAir Tanker RetardantEscape RouteRepair LineRoad RepairFenceOther
--	--	--	--	---	---	--