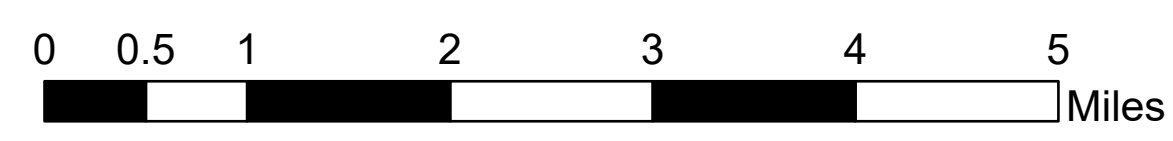


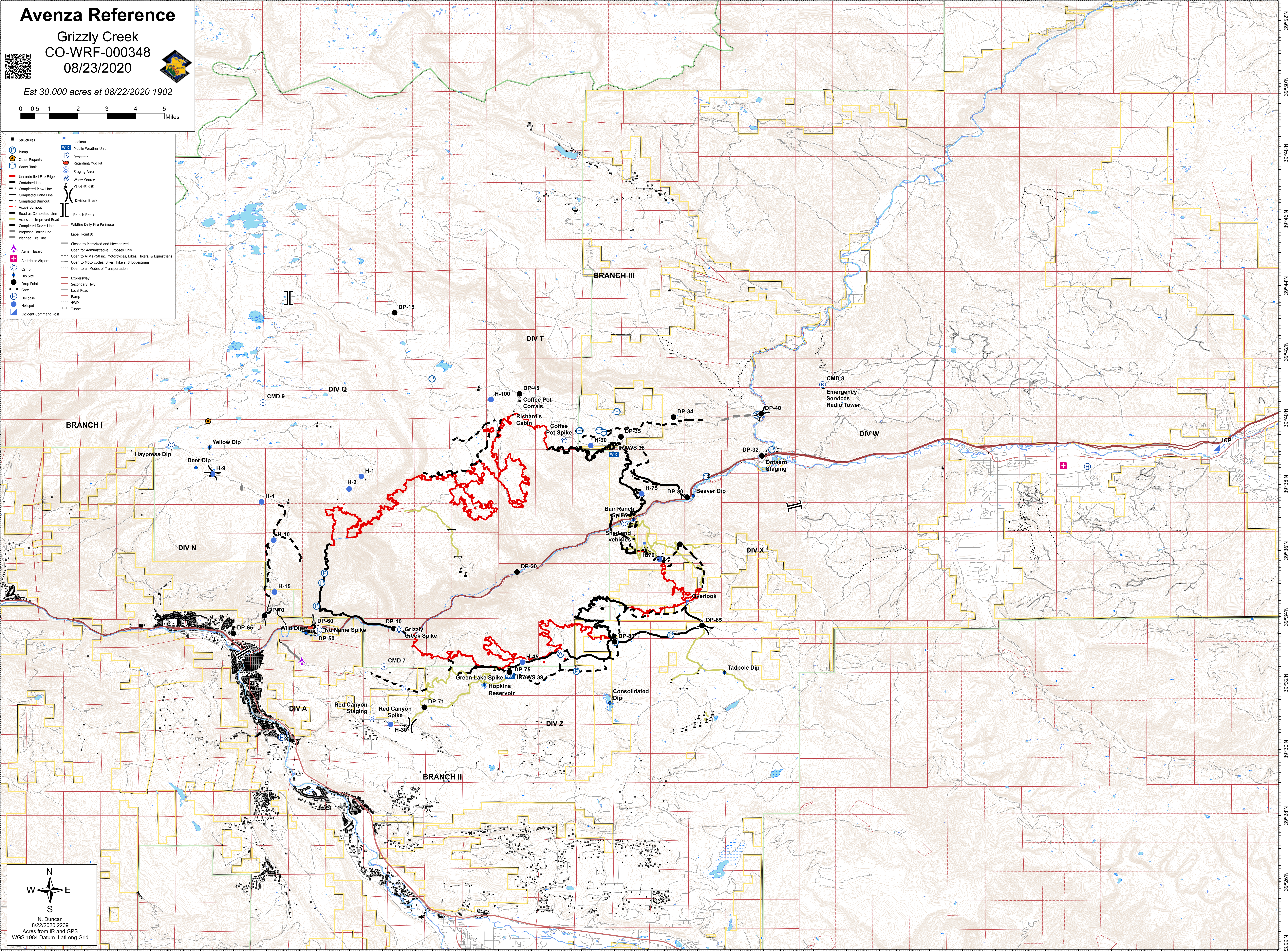
# Avenza Reference

Grizzly Creek  
CO-WRF-000348  
08/23/2020

Est 30,000 acres at 08/22/2020 1902



- |                         |   |
|-------------------------|---|
| Structures              | Lookout   |
| Pump                    | Mobile Weather Unit   |
| Other Property          | Repeater  |
| Water Tank              | Retardant/Mud Pit   |
| Uncontrolled Fire Edge  | Staging Area  |
| Contained Line          | Water Source  |
| Completed Plow Line     | Value at Risk   |
| Completed Hand Line     | Division Break  |
| Completed Burnout       | Branch Break  |
| Active Burnout          | Wildfire Daily Fire Perimeter                                   |
| Road as Completed Line  | Label_Point10   |
| Access or Improved Road |   |
| Completed Dozer Line    |   |
| Proposed Dozer Line     |   |
| Planned Fire Line       |   |
|                         | Closed to Motorized and Mechanized                              |
|                         | Open for Administrative Purposes Only                           |
|                         | Open to ATV (<50 in), Motorcycles, Bikes, Hikers, & Equestrians |
|                         | Open to Motorcycles, Bikes, Hikers, & Equestrians               |
|                         | Open to all Modes of Transportation                             |
| Aerial Hazard           |   |
| Airstrip or Airport     |   |
| Camp                    |   |
| Dip Site                | Expressway  |
| Drop Point              | Secondary Hwy   |
| Gate                    | Local Road  |
| Hellbase                | Ramp  |
| Hellspot                | 4WD   |
| Incident Command Post   | Tunnel  |



N  
W E  
S

N. Duncan  
8/22/2020 2239  
Acres from IR and GPS  
WGS 1984 Datum, LatLong Grid