

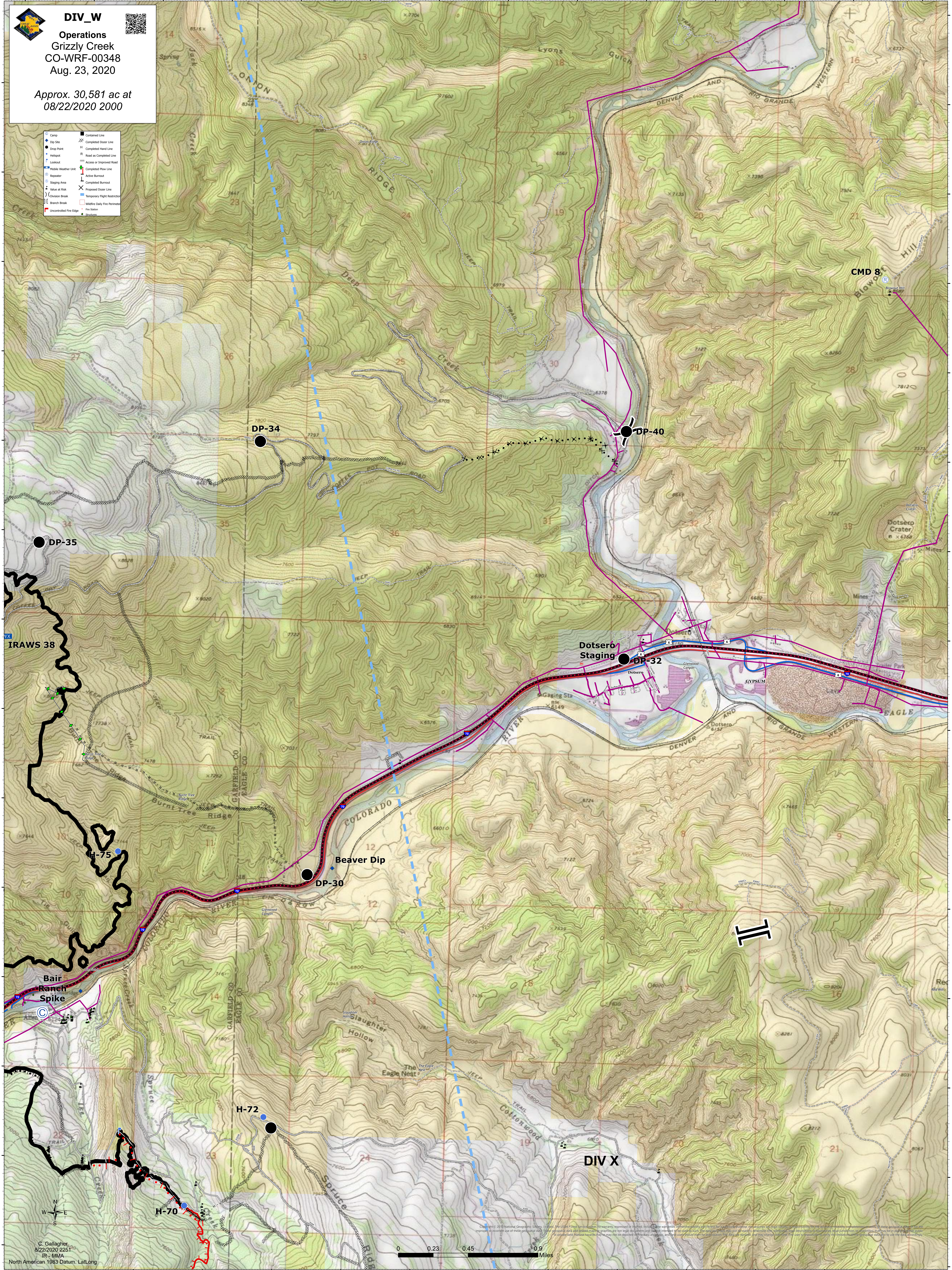


DIV_W

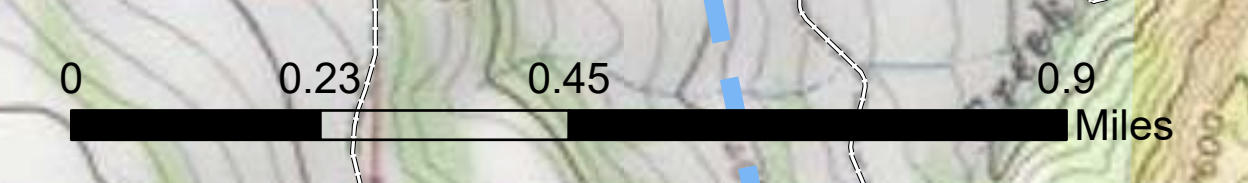
Operations
Grizzly Creek
CO-WRF-00348
Aug. 23, 2020

Approx. 30,581 ac at
08/22/2020 2000

- Camp
- Dip Site
- Drop Point
- Helipad
- Lookout
- Mobile Weather Unit
- Repeater
- Staging Area
- Vehicle at Risk
- Crewman Break
- Branch Break
- Uncontrolled Fire Edge
- Completed Line
- Completed Doser Line
- Completed Hand Line
- Road as Completed Line
- Access or Improved Road
- Completed Flow Line
- Active Burnout
- Completed Burnout
- Proposed Doser Line
- Proposed Hand Line
- Temporary Flight Restriction
- Weather Daily Fire Permit
- Fire Station
- Structure



C. Gallagher
8/22/2020 2251
IR - MMA
North American 1983 Datum, Lallong



Copyright © 2019 National Geographic Society. All rights reserved. This content does not constitute a warranty, expressed or implied, including the warranty of accuracy, completeness, or timeliness of the data. The user is responsible for the use of the data and for any consequences arising from its use. The user is responsible for the use of the data and for any consequences arising from its use.