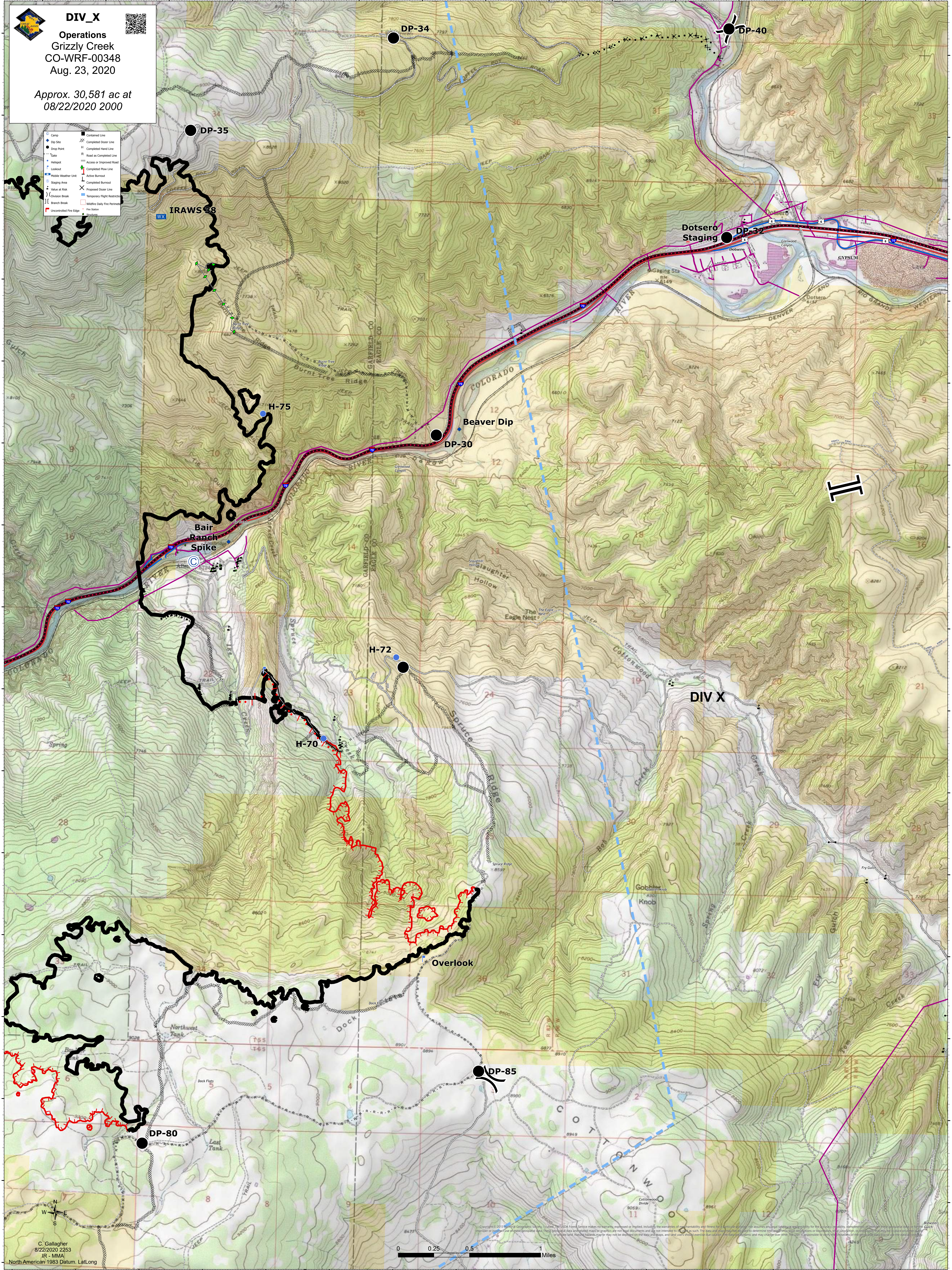


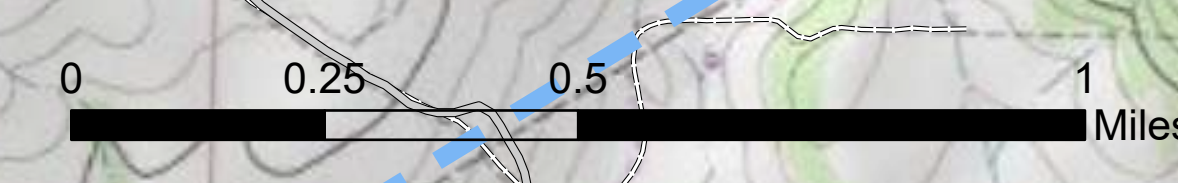
DIV_X
Operations
Grizzly Creek
CO-WRF-00348
Aug. 23, 2020

Approx. 30,581 ac at
 08/22/2020 2000

- | | | | |
|--|------------------------|--|-------------------------------|
| | Camp | | Controlled Line |
| | Dip Site | | Completed Burn Line |
| | Gate | | Completed Hand Line |
| | Helipad | | Road as Completed Line |
| | Lookout | | Access or Improved Road |
| | Mobile Weather Unit | | Completed Flow Line |
| | Staging Area | | Active Burnout |
| | Water or Dam | | Completed Burnout |
| | Crest Break | | Proposed Burn Line |
| | Branch Break | | Temporary Flight Restriction |
| | Uncontrolled Fire Edge | | Wildfire Daily Fire Perimeter |
| | Fire Station | | Fire Station |
| | Fire Station | | Fire Station |



C. Gallagher
 8/22/2020 2253
 IR - MMA
 North American 1983 Datum, Lat/Long



Copyright © 2013 National Geographic Society. To view the full data source, please visit the National Geographic Society's website. The data source makes no warranty, expressed or implied, including the availability and fitness for a particular purpose. The user assumes all liability for any use of the data. The data source is not responsible for any errors or omissions in the data. The data source is not responsible for any damage or loss of any kind resulting from the use of the data. The data source is not responsible for any damage or loss of any kind resulting from the use of the data. The data source is not responsible for any damage or loss of any kind resulting from the use of the data.