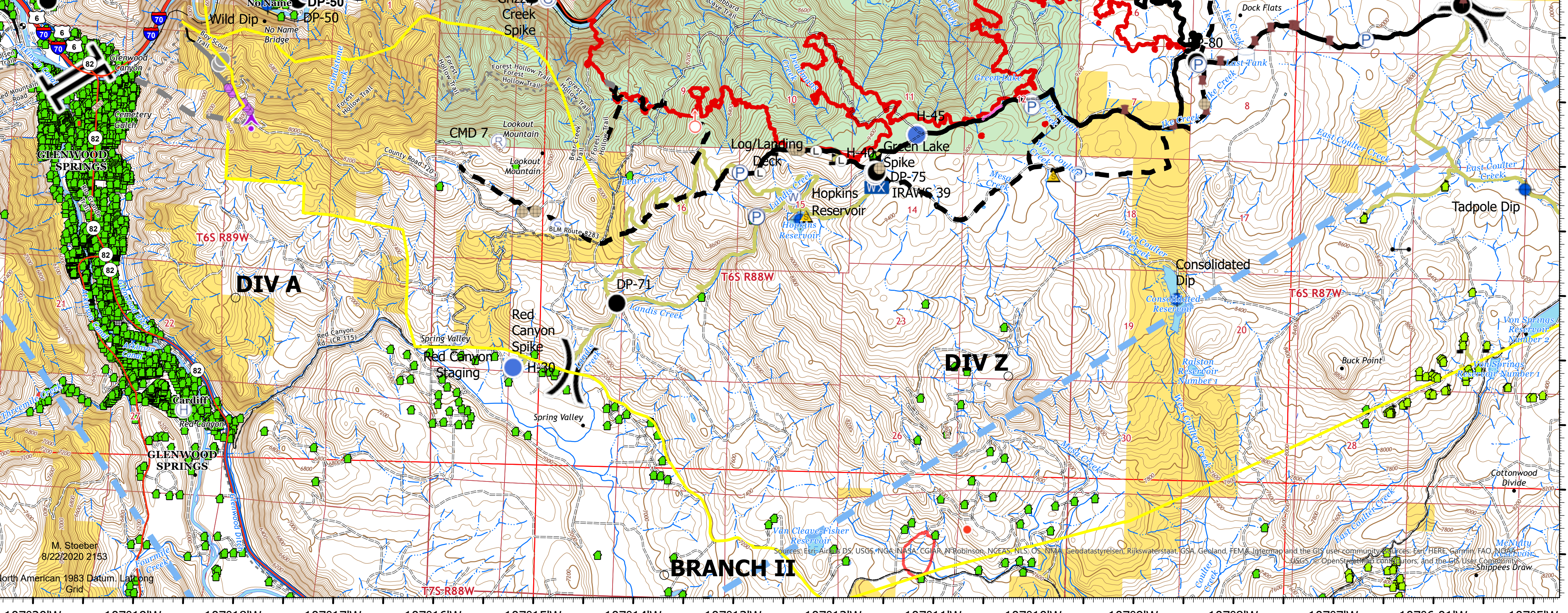


# Structure Protection

Grizzly Creek  
CO-WFR-00348  
Aug. 23, 2020

Approx. 30,581 ac at  
08/22/2020 2000

- Label Point
- Structures
- 2020\_GISS\_Edit
- Breaks
- Event Point
- Aerial Hazard
- Camp
- Dip Site
- Drop Point
- Dozer Push
- Fence - Cut/Damaged
- Gate
- Helibase
- Helispot
- Hot Spot
- Landing or Log Deck
- Lookout
- Mobile Weather Unit
- Repair Point
- Repeater
- Retardant/Mud Pit
- Safety Zone
- Spot Fire
- Staging Area
- Water Source
- Value at Risk
- Other
- Division Break
- Branch Break
- Uncontrolled Fire Edge
- Contained Line
- Completed Hand Line
- Completed Burnout
- Active Burnout
- Road as Completed Line
- Completed Dozer Line
- Proposed Dozer Line
- Planned Fire Line
- Aerial Retardant Drop
- Temporary Flight Restriction
- Repair Line
- Road Repair
- Ridge/Geographic Feature
- Other



M. Stoerber  
8/22/2020 2153  
North American 1983 Datum, Lat Long  
Grid

Sources: Esri, AirPhoto, USGS, NOAA, NASA, CGAR, Robinson, NCEAS, NLS, OS, NIMA, Geodatasystemen, Rijkswaterstaat, GSA, Geoland, FEMA, Intermap and the GIS user community sources: Esri, HERE, Garmin, FAO, NOAA, USGS, OpenStreetMap contributors, and the GIS User Community  
Shippes Draw