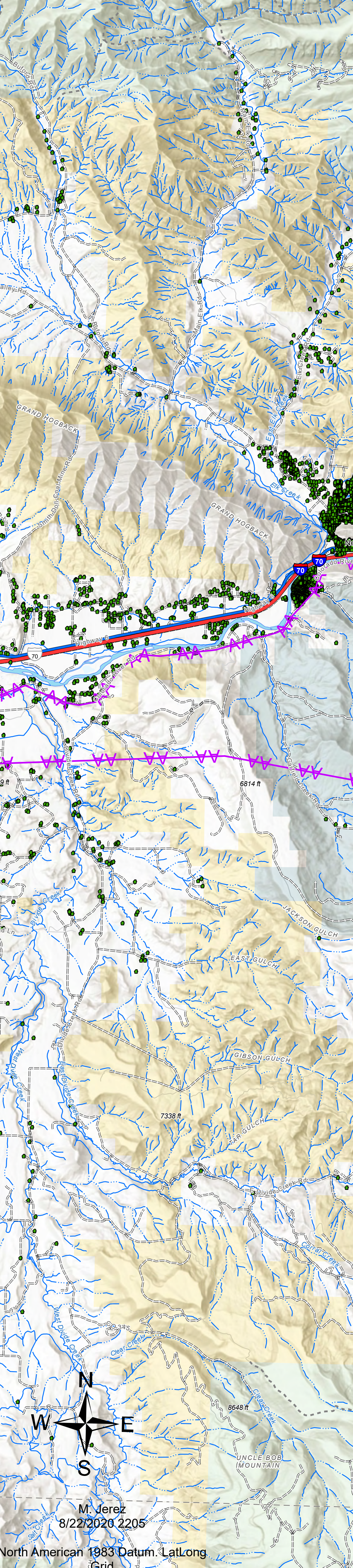


Air Operations
 Grizzly Creek
 CO-WRF-000348
 Aug. 23, 2020

Est. 30,581 ac at
 08/22/2020 2000

- | | |
|---|--|
| <ul style="list-style-type: none"> • Aerial Hazard • Airstrip or Airport • Camp • Dip Site • Drop Point • Gate • Helibase • Helispot • Incident Command Post • Lookout • Mobile Weather Unit • Repeater • Retardant/Mud Pit • Staging Area • Water Source • Value at Risk • Division Break • Branch Break • Uncontrolled Fire Edge | <ul style="list-style-type: none"> — Contained Line — Completed Dozer Line — Completed Hand Line — Road as Completed Line — Access or Improved Road — Completed Plow Line — Active Burnout — Completed Burnout — Proposed Dozer Line — Planned Fire Line — Temporary Flight Restriction — Wildfire Daily Fire Perimeter • Structures • Flight Routes • Check Points • Transmission Lines • Powerline Work Sites |
|---|--|



BRANCH I

BRANCH III

BRANCH II

DIV N

DIV Q

DIV T

DIV W

DIV X

DIV A

DIV Z



M. Jerez
 8/22/2020 2205
 North American 1983 Datum, LatLong
 S10