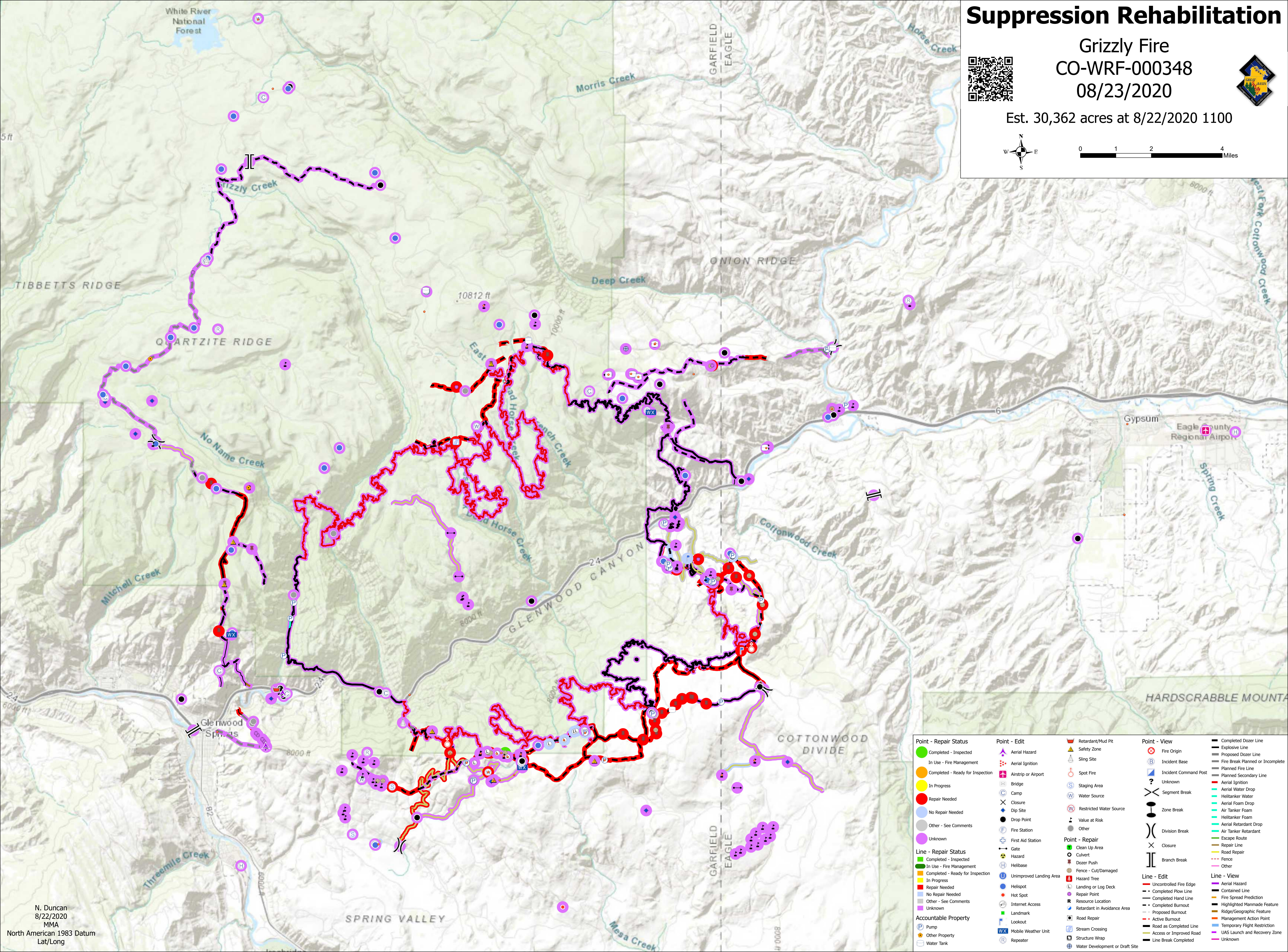
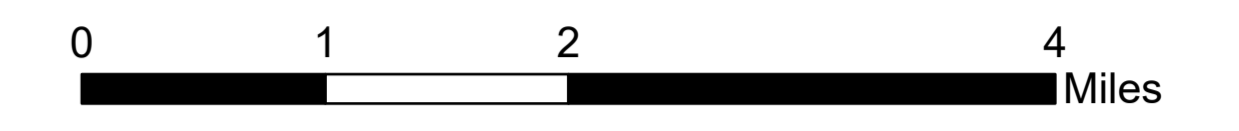
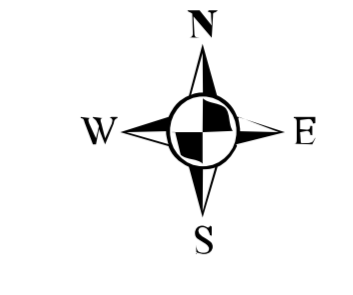


Suppression Rehabilitation

Grizzly Fire
CO-WRF-000348
08/23/2020



Est. 30,362 acres at 8/22/2020 1100



Point - Repair Status <ul style="list-style-type: none">Completed - InspectedIn Use - Fire ManagementCompleted - Ready for InspectionIn ProgressRepair NeededNo Repair NeededOther - See CommentsUnknown	Point - Edit <ul style="list-style-type: none">Aerial HazardAerial IgnitionAirstrip or AirportBridgeCampClosureDrop SiteFire StationFirst Aid StationGateHazardHelibaseUnimproved Landing AreaHot SpotInternet AccessLandmarkLookoutMobile Weather UnitRepeater	Point - Repair <ul style="list-style-type: none">Clean Up AreaCulvertDozer PushFence - Cut/DamagedHazard TreeLanding or Log DeckResource LocationRetardant in Avoidance AreaRoad RepairStream CrossingStructure WrapWater Development or Draft Site	Point - View <ul style="list-style-type: none">Fire OriginIncident BaseIncident Command PostUnknownSegment BreakZone BreakDivision BreakClosureBranch Break	Line - Repair Status <ul style="list-style-type: none">Completed - InspectedIn Use - Fire ManagementCompleted - Ready for InspectionIn ProgressRepair NeededNo Repair NeededOther - See CommentsUnknown	Line - Edit <ul style="list-style-type: none">Uncontrolled Fire EdgeCompleted Plow LineCompleted Hand LineCompleted BurnoutProposed BurnoutActive BurnoutRoad as Completed LineAccess or Improved RoadLine Break Completed	Line - View <ul style="list-style-type: none">Completed Dozer LineExposed LineProposed Dozer LineFire Break Planned or IncompletePlanned Fire LinePlanned Secondary LineAerial IgnitionAerial Water DropHelitanker WaterAerial Foam DropHelitanker FoamAerial Retardant DropAir Tanker RetardantEscape RouteRoad RepairRepair LineFenceOther
--	--	---	--	---	---	--