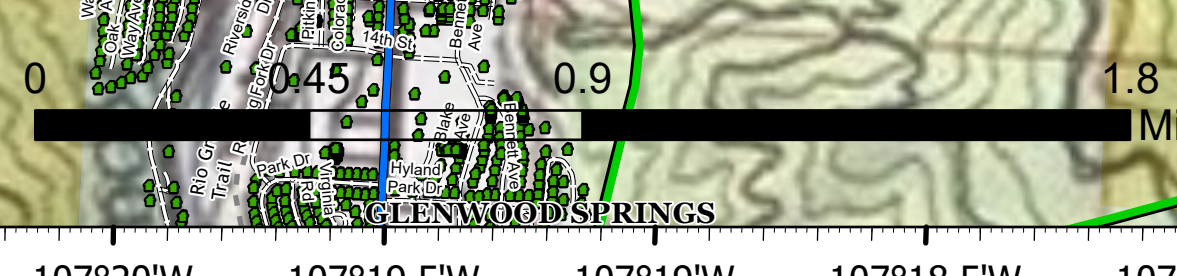
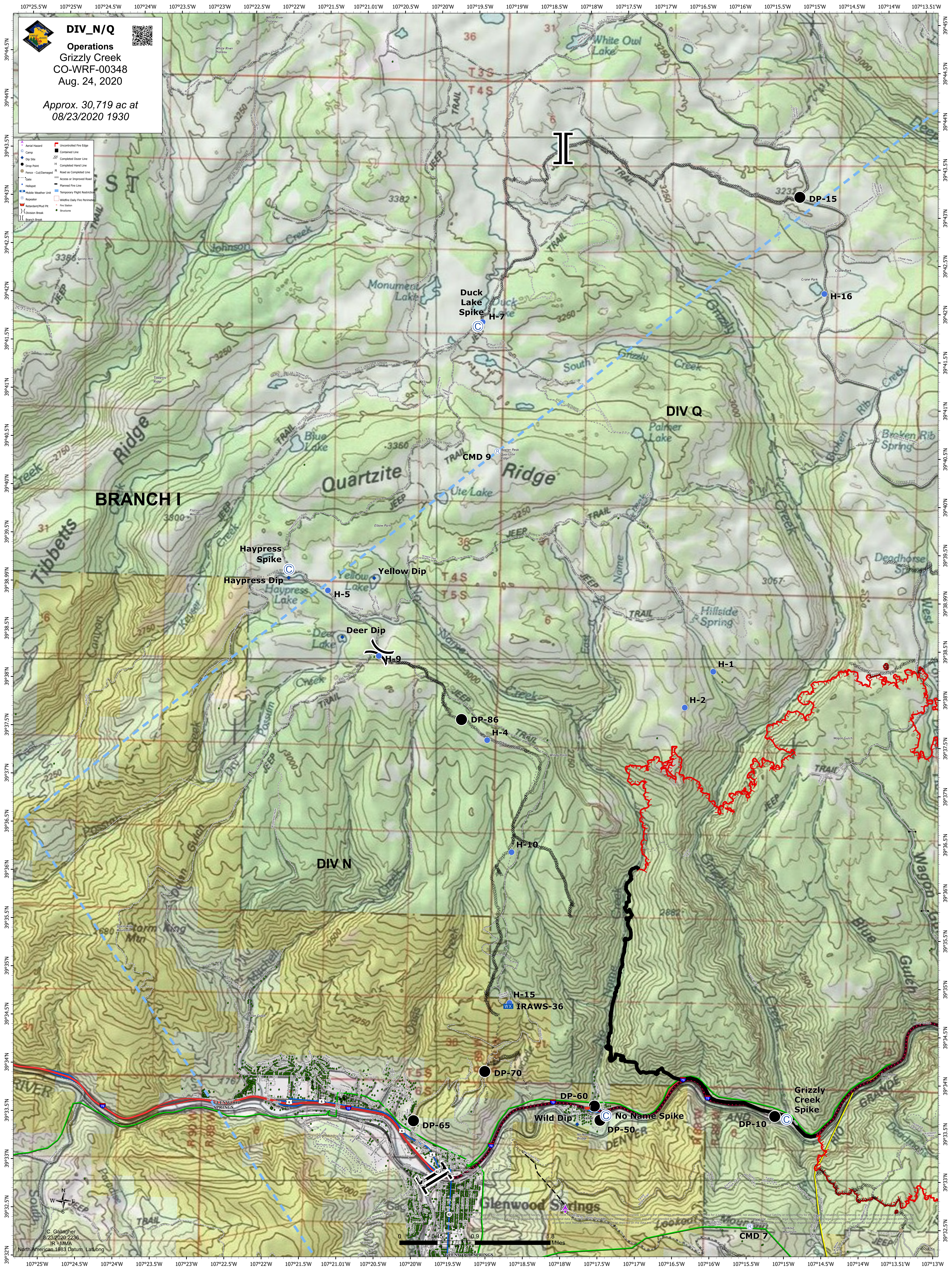


**DIV\_N/Q**

**Operations**  
 Grizzly Creek  
 CO-WRF-00348  
 Aug. 24, 2020

Approx. 30,719 ac at  
 08/23/2020 1930

- Aerial Hazard
- Camp
- Dip Site
- Drop Point
- Fence - Cut/Damaged
- Hoop
- Mobile Weather Line
- Repeater
- Standard/Mod PE
- Erosion Break
- Branch Break
- Uncontrolled Fire Edge
- Contained Line
- Completed Door Line
- Completed Hand Line
- Road as Completed Line
- Access or Improved Road
- Planned Fire Line
- Temporary Flight Restriction
- Wildfire Daily Fire Perimeter
- Fire Station
- Structure



**CMD 7**