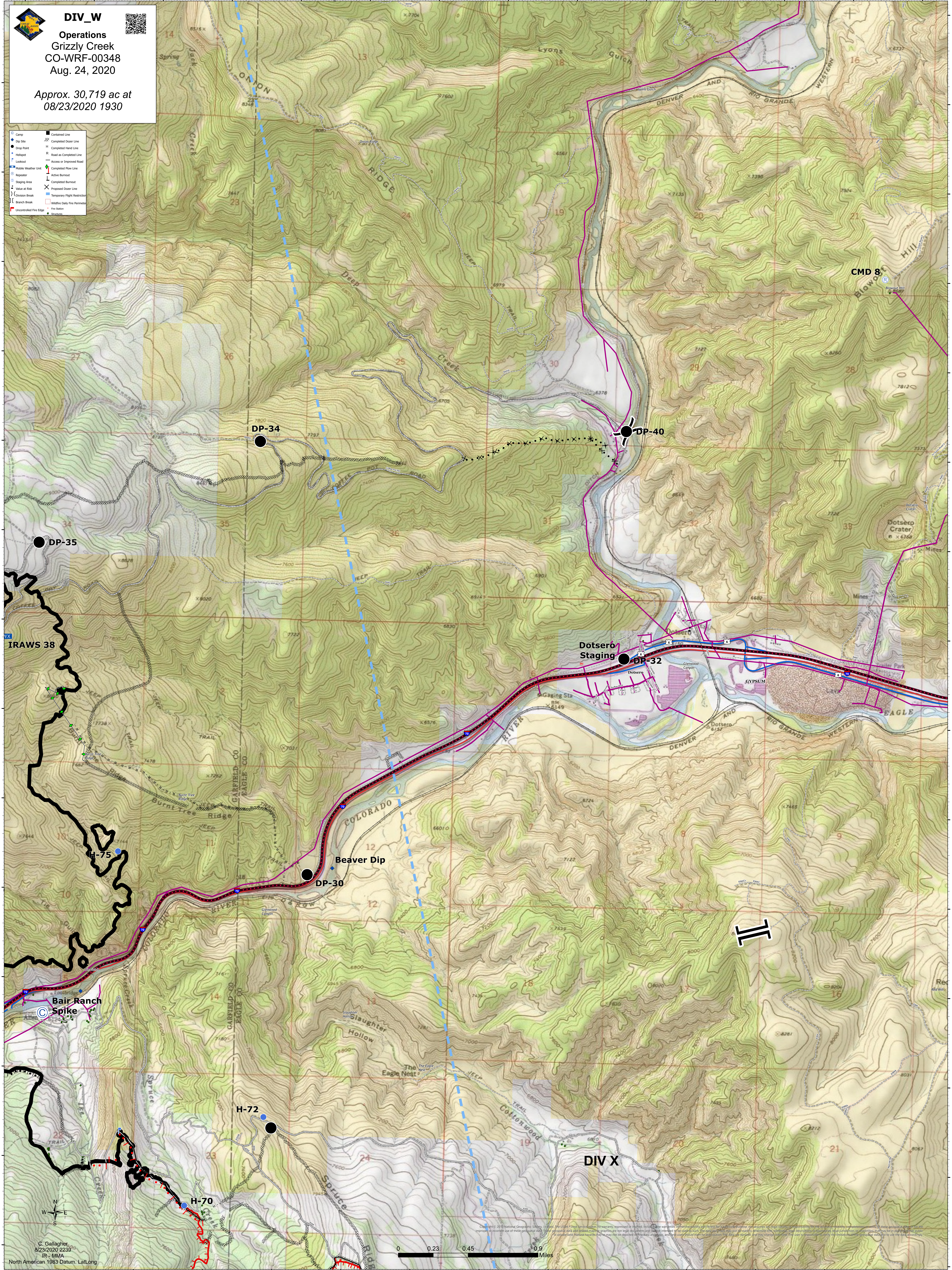


DIV_W

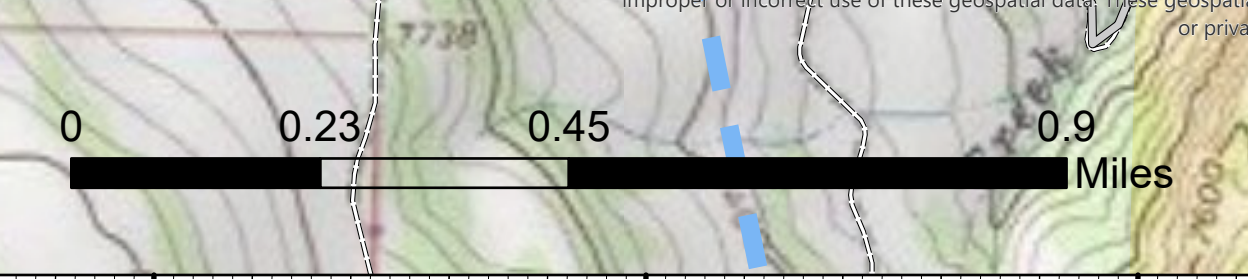
Operations
 Grizzly Creek
 CO-WRF-00348
 Aug. 24, 2020

Approx. 30,719 ac at
 08/23/2020 1930

- Camp
- Dip Site
- Drop Point
- Helipoint
- Lookout
- Mobile Weather Unit
- Resource
- Staging Area
- Value at Risk
- Crew Break
- Branch Break
- Uncontrolled Fire Edge
- Completed Dozer Line
- Completed Hand Line
- Road as Completed Line
- Access or Improved Road
- Completed Flow Line
- Active Burned
- Completed Burned
- Proposed Dozer Line
- Temporary Flight Restrictor
- Wildfire Daily Fire Perimeter
- Fire Station
- Structure



C. Gallagher
 8/23/2020 2239
 IR - MMA
 North American 1983 Datum, Lallong



Copyright: © 2019 National Geographic Society. All rights reserved. This content does not constitute a warranty, expressed or implied, including the warranty of accuracy, completeness, or timeliness of the data. The user is responsible for the accuracy and completeness of the data. The user is responsible for the accuracy and completeness of the data. The user is responsible for the accuracy and completeness of the data.