



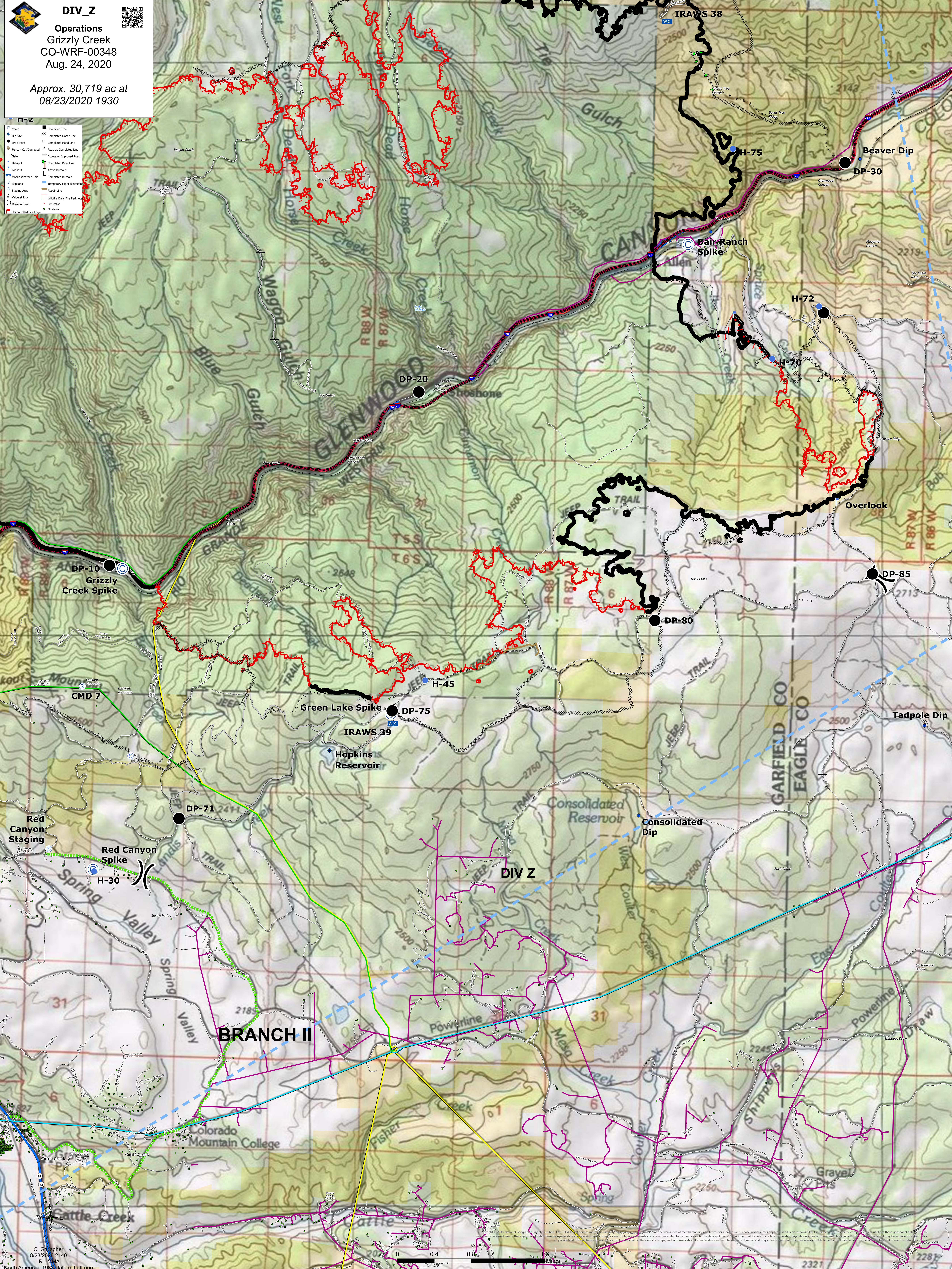
DIV_Z

Operations
Grizzly Creek
CO-WRF-00348
Aug. 24, 2020

Approx. 30,719 ac at
08/23/2020 1930

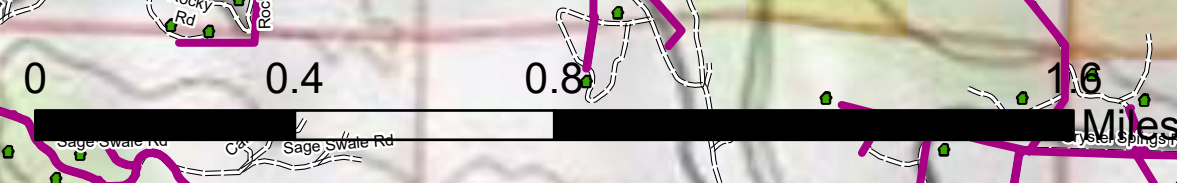


- | | |
|--|-------------------------------|
| | Contained Line |
| | Dip Site |
| | Drop Point |
| | Fence - Cut/Damaged |
| | Access or Improved Road |
| | State |
| | Hikepoint |
| | Lookout |
| | Public Weather Unit |
| | Repetitor |
| | Staging Area |
| | Value at Risk |
| | Division Break |
| | Uncontrolled Fire Edge |
| | Completed Doser Line |
| | Completed Hand Line |
| | Road as Completed Line |
| | Completed Power Line |
| | Active Burnout |
| | Completed Burnout |
| | Temporary Flight Restriction |
| | Repair Line |
| | Wildfire Daily Fire Perimeter |
| | Fire Station |
| | Structure |



BRANCH II

DIV Z



C. Gallagher
8/23/2020 2140
IR - MVA
North American 1983 Datum: LatLong

© 2013 National Geographic. All rights reserved. This product is not intended to be used as a substitute for professional advice. The data and maps are provided as a service and are not intended to be used as a substitute for professional advice. The data and maps are provided as a service and are not intended to be used as a substitute for professional advice. The data and maps are provided as a service and are not intended to be used as a substitute for professional advice.