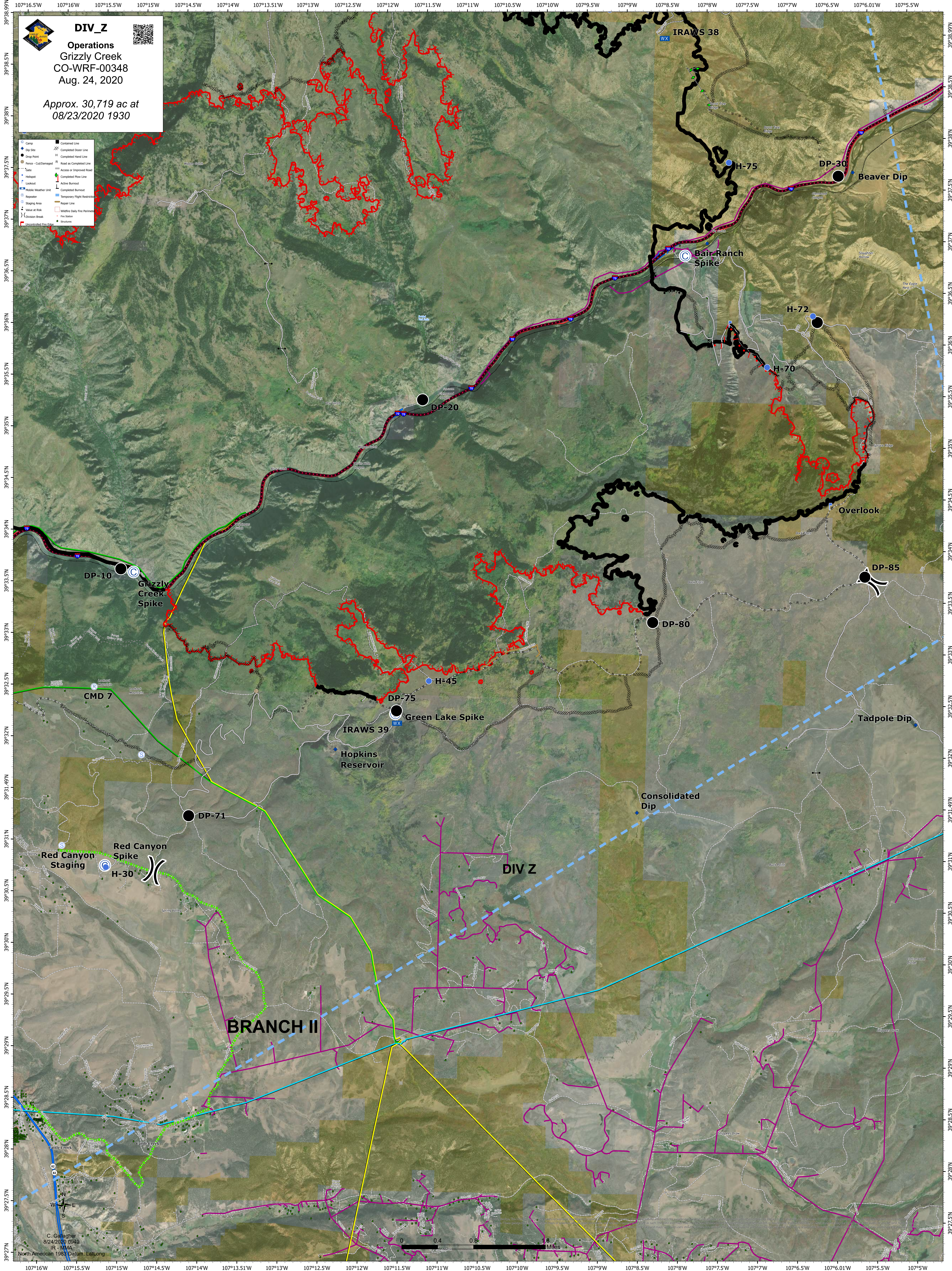


DIV_Z

Operations
Grizzly Creek
CO-WRF-00348
Aug. 24, 2020

Approx. 30,719 ac at 08/23/2020 1930

- Camp
- Dip Site
- Drop Point
- Fence - Cut/Changed
- Tunnel
- Lookout
- Mobile Weather Unit
- Reporter
- Staging Area
- Value at Risk
- Division Break
- Unaccompanied Fire Edge
- Contained Line
- Completed Dozer Line
- Road or Improved Road
- Fenced or Completed Line
- Active Burnout
- Completed Burnout
- Temporary Flight Restriction
- Repair Line
- Wildfire Daily Fire Permit
- Fire Station
- Structure



BRANCH II

DIV Z

