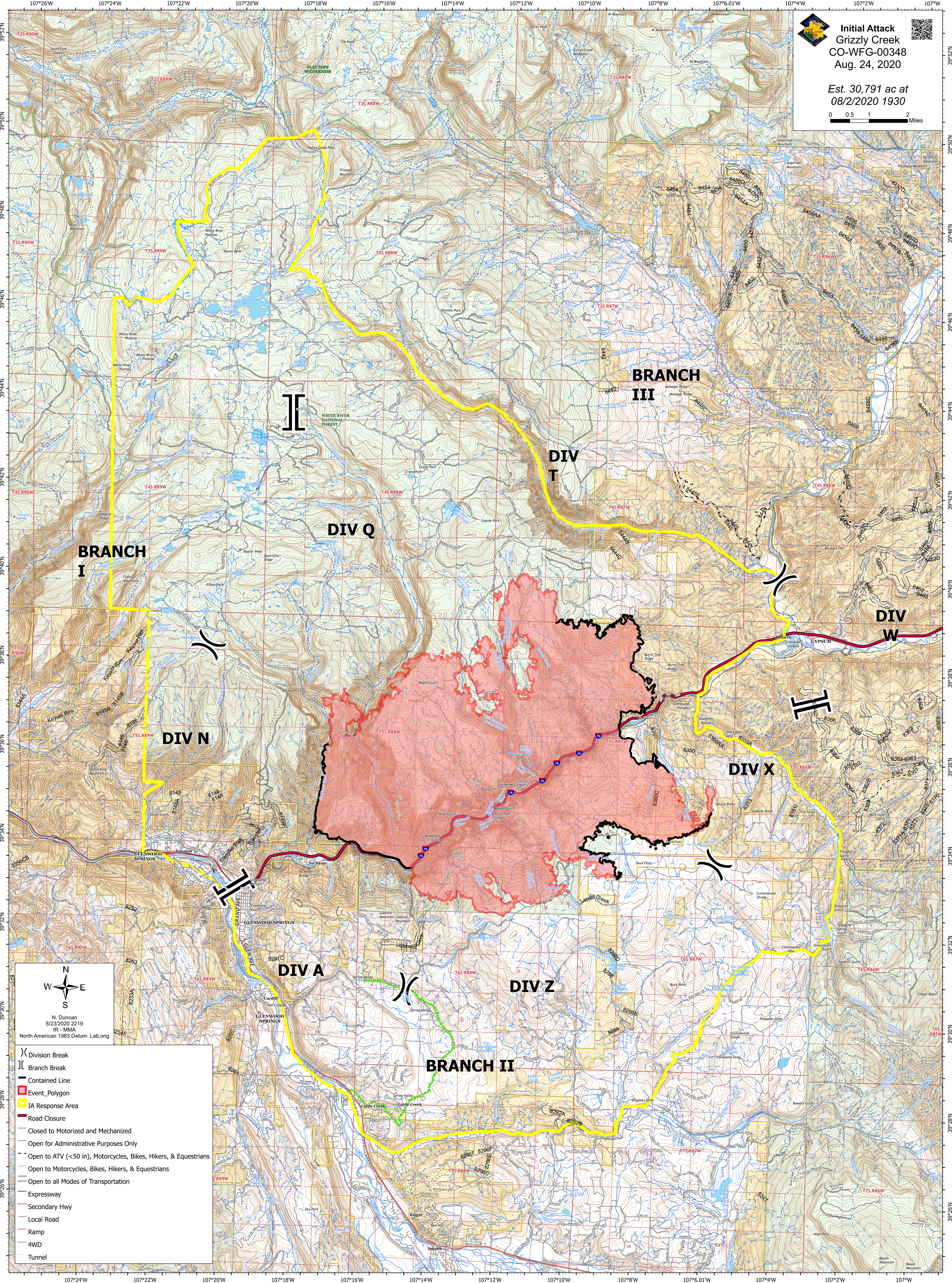
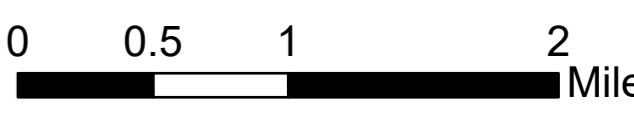




**Initial Attack**  
**Grizzly Creek**  
**CO-WFG-00348**  
**Aug. 24, 2020**

*Est. 30,791 ac at*  
*08/2/2020 1930*



N  
W E  
S

N. Duncan  
8/23/2020 2219  
IR - MMA  
North American 1983 Datum. Lat/Long

- ( ) Division Break
- || Branch Break
- Contained Line
- Event Polygon
- IA Response Area
- Road Closure
- Closed to Motorized and Mechanized
- Open for Administrative Purposes Only
- Open to ATV (<50 in), Motorcycles, Bikes, Hikers, & Equestrians
- Open to Motorcycles, Bikes, Hikers, & Equestrians
- Open to all Modes of Transportation
- Expressway
- Secondary Hwy
- Local Road
- Ramp
- 4WD
- Tunnel