

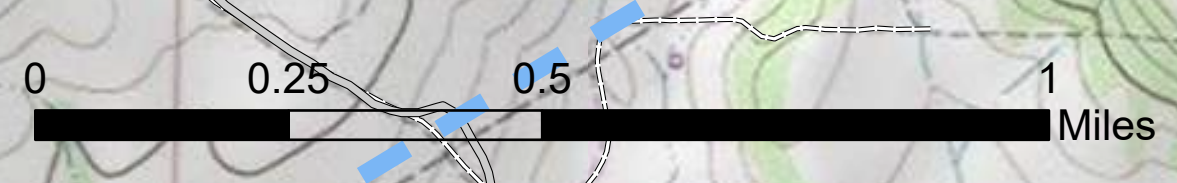
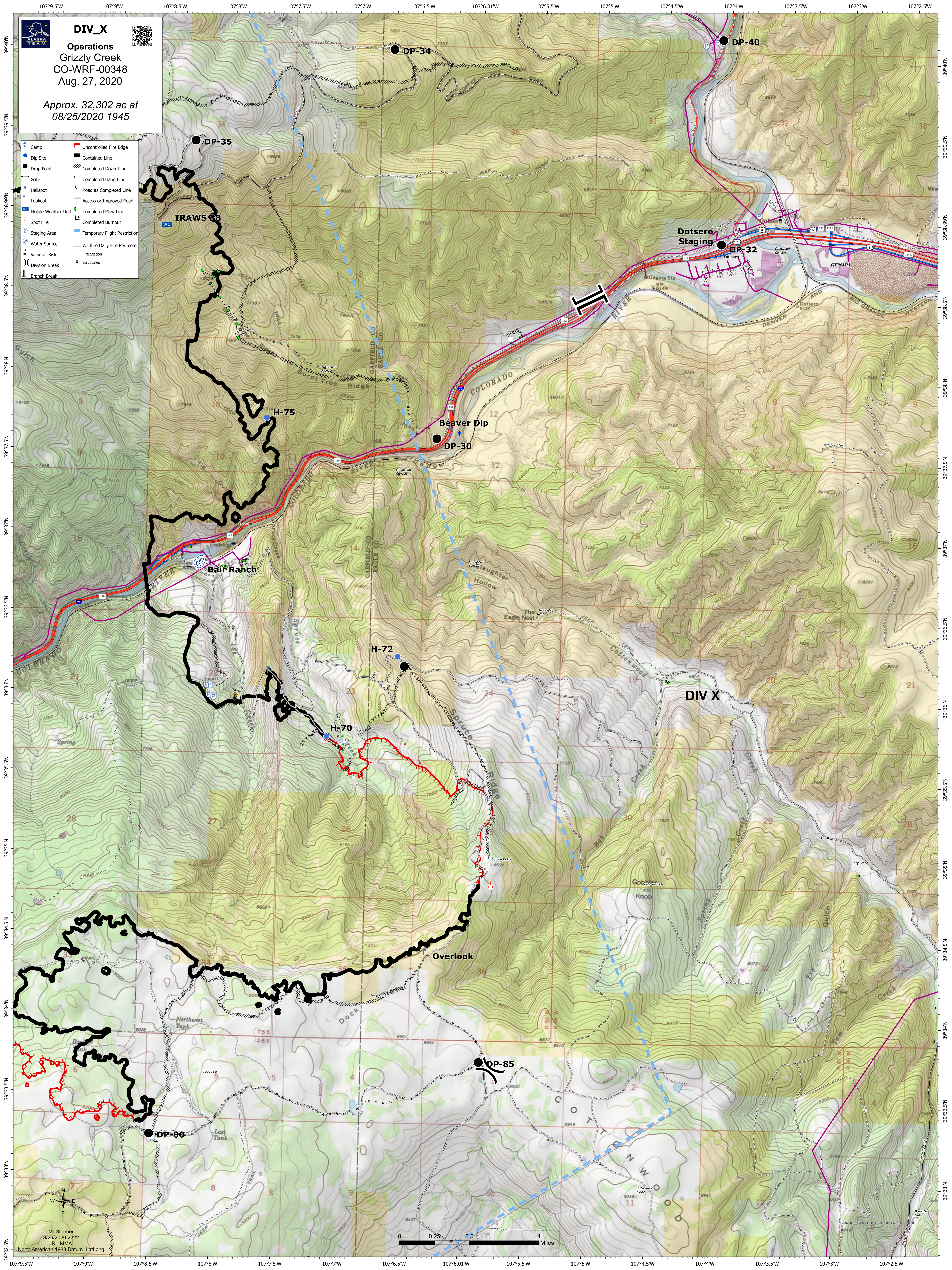
DIV_X

Operations
Grizzly Creek
CO-WRF-00348
Aug. 27, 2020

Approx. 32,302 ac at
08/25/2020 1945



- Camp
- Dip Site
- Drop Point
- Gate
- Helispot
- Lookout
- Mobile Weather Unit
- Spot Fire
- Staging Area
- Water Source
- Value at Risk
- Division Break
- Branch Break
- Uncontrolled Fire Edge
- Contained Line
- Completed Dozer Line
- Completed Hand Line
- Road as Completed Line
- Access or Improved Road
- Completed Plow Line
- Completed Burnout
- Temporary Flight Restriction
- Wildfire Daily Fire Perimeter
- Fire Station
- Structures



M. Stoerber
8/26/2020 2222
JR - MMA
North American 1983 Datum, Lat/Long