

DIV_W/T

Suppression Repair
Grizzly Creek
CO-WRF-00348
Aug. 27, 2020

Approx. 32,408 ac at
08/26/2020 1921

Event Point - Repair Status

- Completed - Inspected
- Repair Needed
- No Repair Needed
- Unknown

Event Line - Repair Status

- Repair Needed
- No Repair Needed
- Other - See Comments
- Unknown

Event Point - Repair

- Deer Flush
- Fence - Cut/Damaged
- Landing or Log Deck
- Stream Crossing
- Water Development or Draft Site

Structures

- Structures

Event Items

- Event Point
- Dip Site

Accountable Property

- Pump
- Other Property
- Water Tank

Event Line

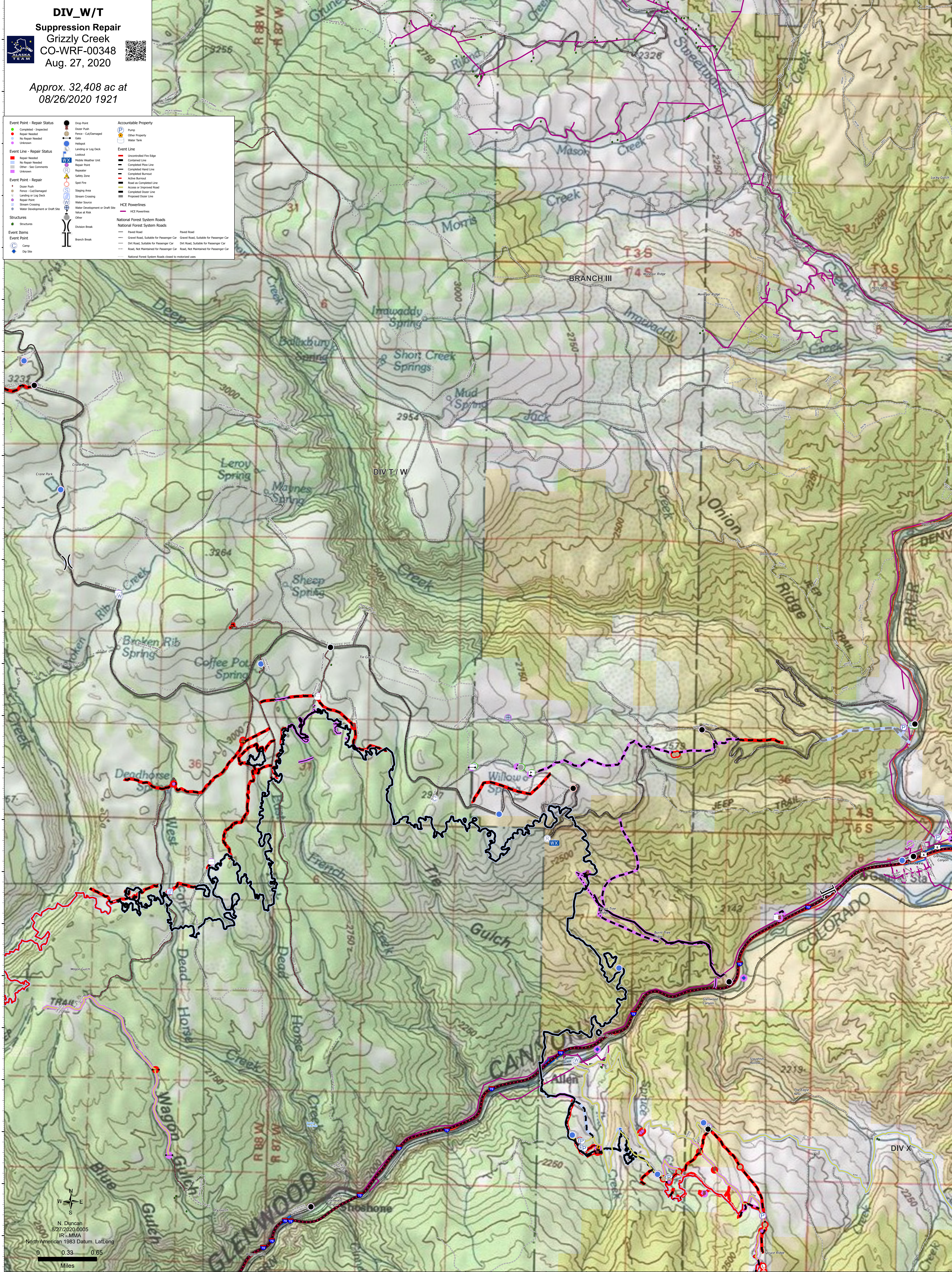
- Uncontrolled Fire Edge
- Controlled Line
- Completed Fire Line
- Completed Hand Line
- Completed Burnout
- Active Burnout
- Road as Completed Line
- Access or Improved Road
- Completed Deer Line
- Proposed Deer Line

HCE Powerlines

- HCE Powerlines

National Forest System Roads

- Paved Road
- Gravel Road, Suitable for Passenger Car
- Gravel Road, Not Suitable for Passenger Car
- Dirt Road, Suitable for Passenger Car
- Dirt Road, Not Maintained for Passenger Car
- Road, Not Maintained for Passenger Car
- National Forest System Roads closed to motorized uses



N. Duncan
8/27/2020 0005
IP - MMA
North American 1983 Datum, Lat,Long
0 0.33 0.65
Miles