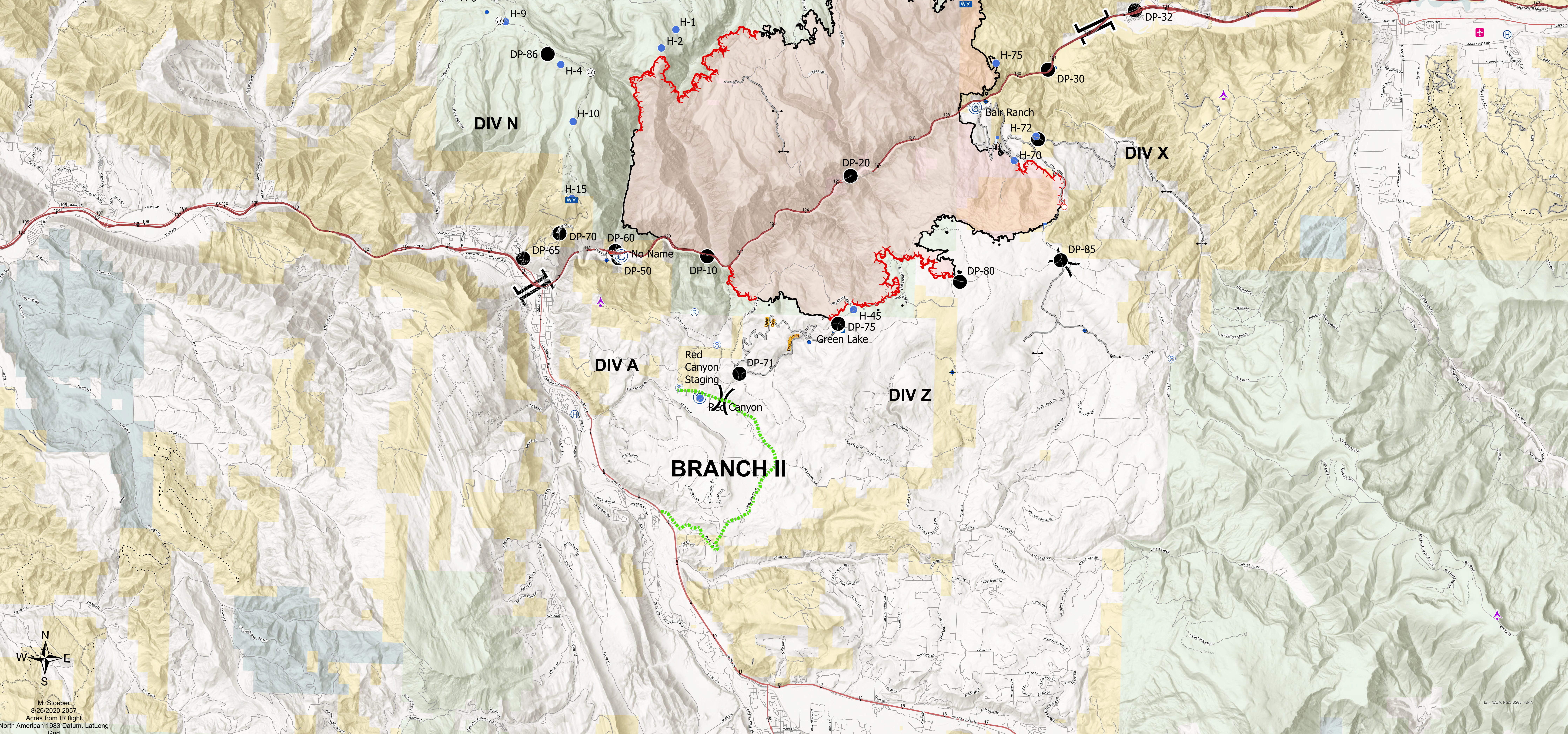


**Transportation**  
**Grizzly Creek**  
**CO-GFX-00348**  
**Aug. 27, 2020**

32,302 ac at  
 08/25/2020 1945

0 0.5 1 2 Miles

- Aerial Hazard
- Airport or Airport
- Camp
- Drop Site
- Gate
- Helispot
- Internet Access
- Lookout
- Mobile Weather Unit
- Restroom
- Restaurant/Mud Pit
- Staging Area
- Water Source
- Wildlife Break
- Branch Break
- Uncontrolled Fire Edge
- Contained Line
- Access or Improved Road
- Wildlife Daily Fire Perimeter
- Other
- Road/Campsite Route
- Road/Campsite Route
- Forest Service
- Bureau of Land Management
- Private
- State, County, City, Areas
- State
- Closed to Motorized and Mechanized
- Open for Administrative Purposes Only
- Open to ATV (<50 in), Motorcycles, Bikes, Hikers, & Equestrians
- Open to Motorcycles, Bikes, Hikers, & Equestrians
- Open to all Modes of Transportation
- Expressway
- Secondary Hwy
- Local Road
- Ramp
- 4WD
- Tunnel
- Milepost



M. Stoeber  
 8/26/2020 2057  
 Acres from IR flight  
 North American 1983 Datum, LatLong