
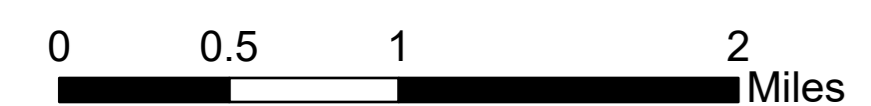
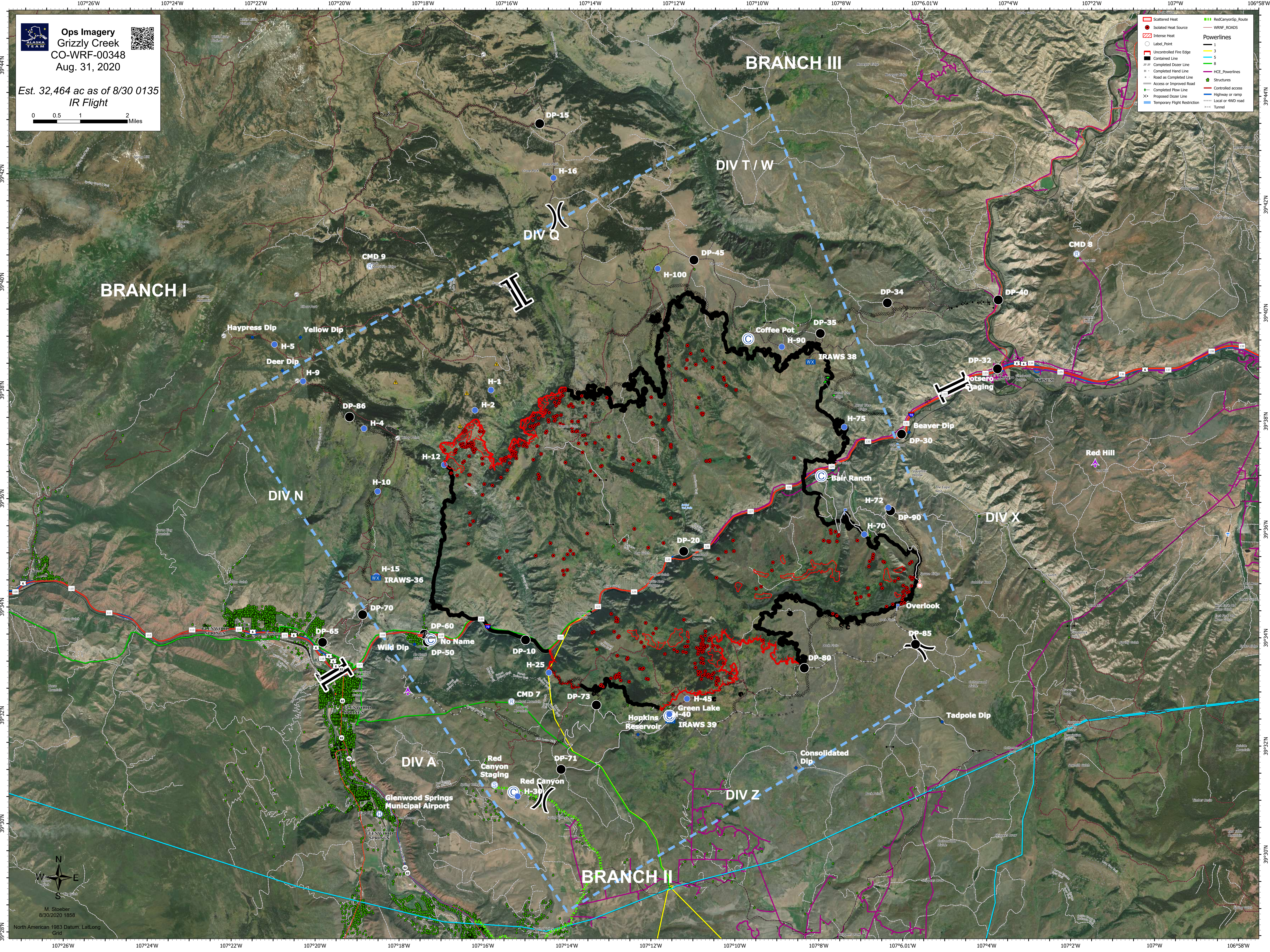


**Ops Imagery**  
 Grizzly Creek  
 CO-WRF-00348  
 Aug. 31, 2020  
 Est. 32,464 ac as of 8/30 0135  
 IR Flight

	Scattered Heat		Red Canyon Staging
	Isolated Heat Source		WRNF ROADS
	Uncontrolled Fire Edge		Powerlines 1
	Contained Line		Powerlines 3
	Completed Dozer Line		Powerlines 5
	Completed Hand Line		Powerlines 8
	Road as Completed Line		HCE Powerlines
	Access or Improved Road		Structures
	Completed Plow Line		Controlled access
	Proposed Dozer Restriction		Highway or ramp
	Temporary Flight Restriction		Local or 4WD road
			Tunnel




  
 M. Stoerber  
 8/30/2020 1858  
 North American 1983 Datum, LatLong  
 Grid