

Air Operations
Grizzly Creek
CO-WRF-000348
Aug. 31, 2020

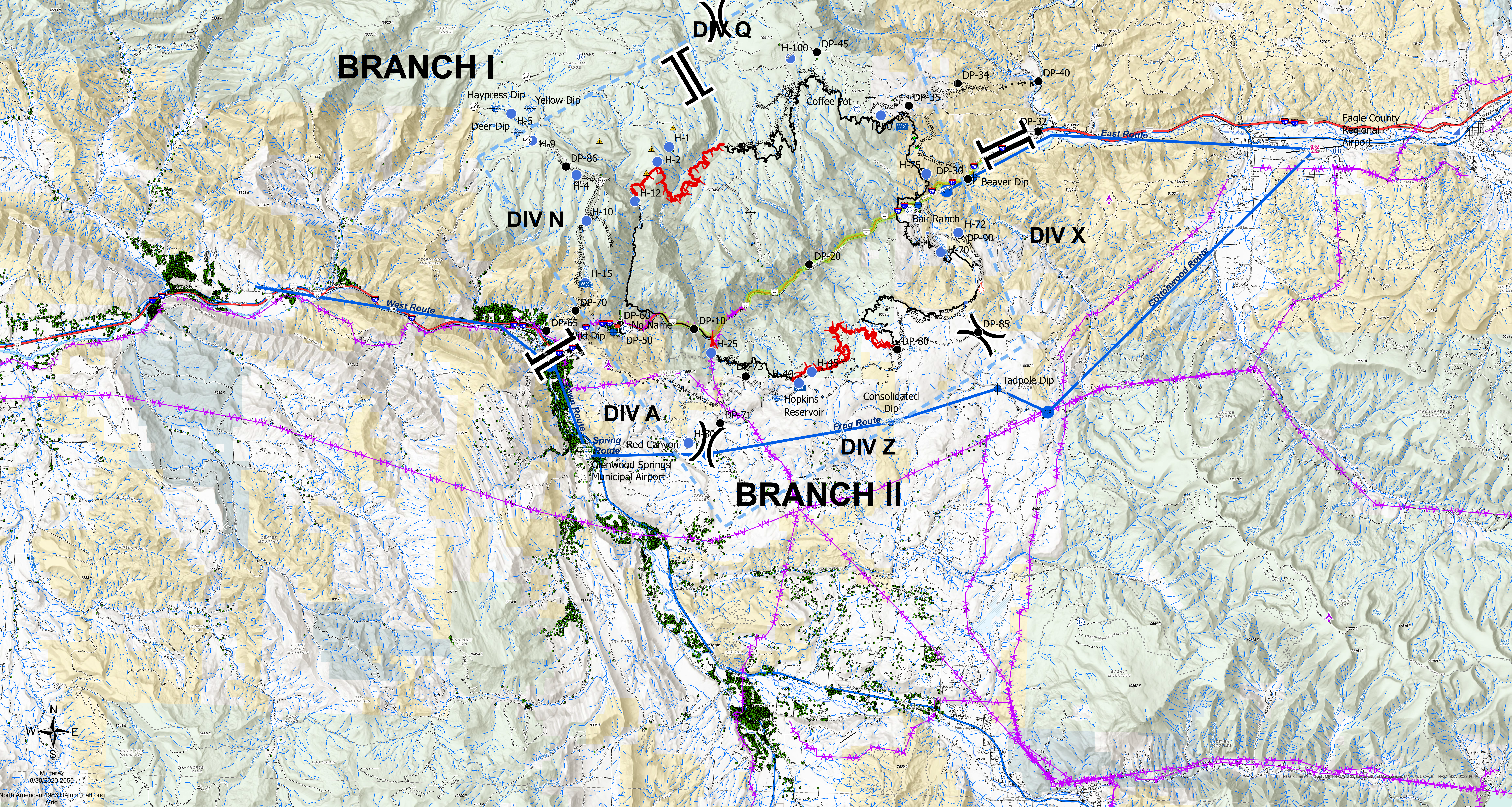



*Est. 32,464 acres as of
8/30 0135 IR Flight*



0 0.5 1 2 Miles

- | | |
|-------------------------|--------------------------------|
| ✦ Aerial Hazard | X Division Break |
| ✦ Airstrip or Airport | II Branch Break |
| ● Camp | — Uncontrolled Fire Edge |
| ● Dip Site | — Contained Line |
| ○ Gate | --- Completed Dozer Line |
| ○ Helibase | — Completed Hand Line |
| ○ Incident Command Post | — Road as Completed Line |
| ○ Internet Access | — Access or Improved Road |
| ○ Lookout | --- Completed Plow Line |
| ○ Mobile Weather Unit | --- Proposed Dozer Line |
| ○ Repeater | — Temporary Flight Restriction |
| ○ Retardant/Mud Pit | ● Structures |
| ○ Safety Zone | — Flight Routes |
| ○ Spot Fire | ● Check Points |
| ○ Staging Area | — Transmission Lines |
| ○ Value at Risk | ● Powerline Work Sites |

M. Jones
8/30/2020 2050
North American 1983 Datum, Lat Long Grid