



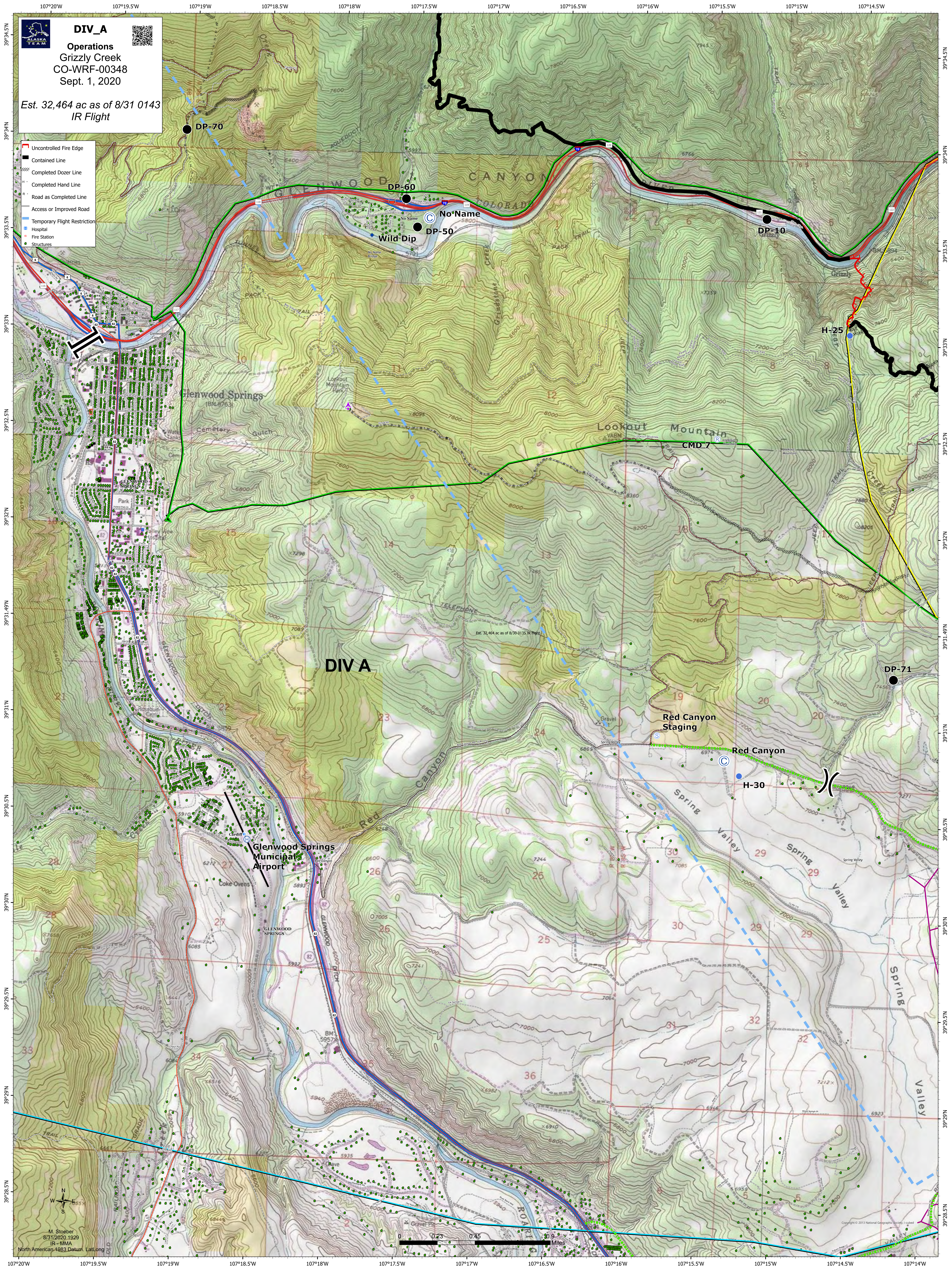
DIV_A

Operations
Grizzly Creek
CO-WRF-00348
Sept. 1, 2020



Est. 32,464 ac as of 8/31 0143
IR Flight

- Uncontrolled Fire Edge
- Contained Line
- Completed Dozer Line
- Completed Hand Line
- Road as Completed Line
- Access or Improved Road
- Temporary Flight Restriction
- Hospital
- Fire Station
- Structures



M. Stoerber
8/31/2020 1929
IR - MMA
North American 1983 Datum, LatLong

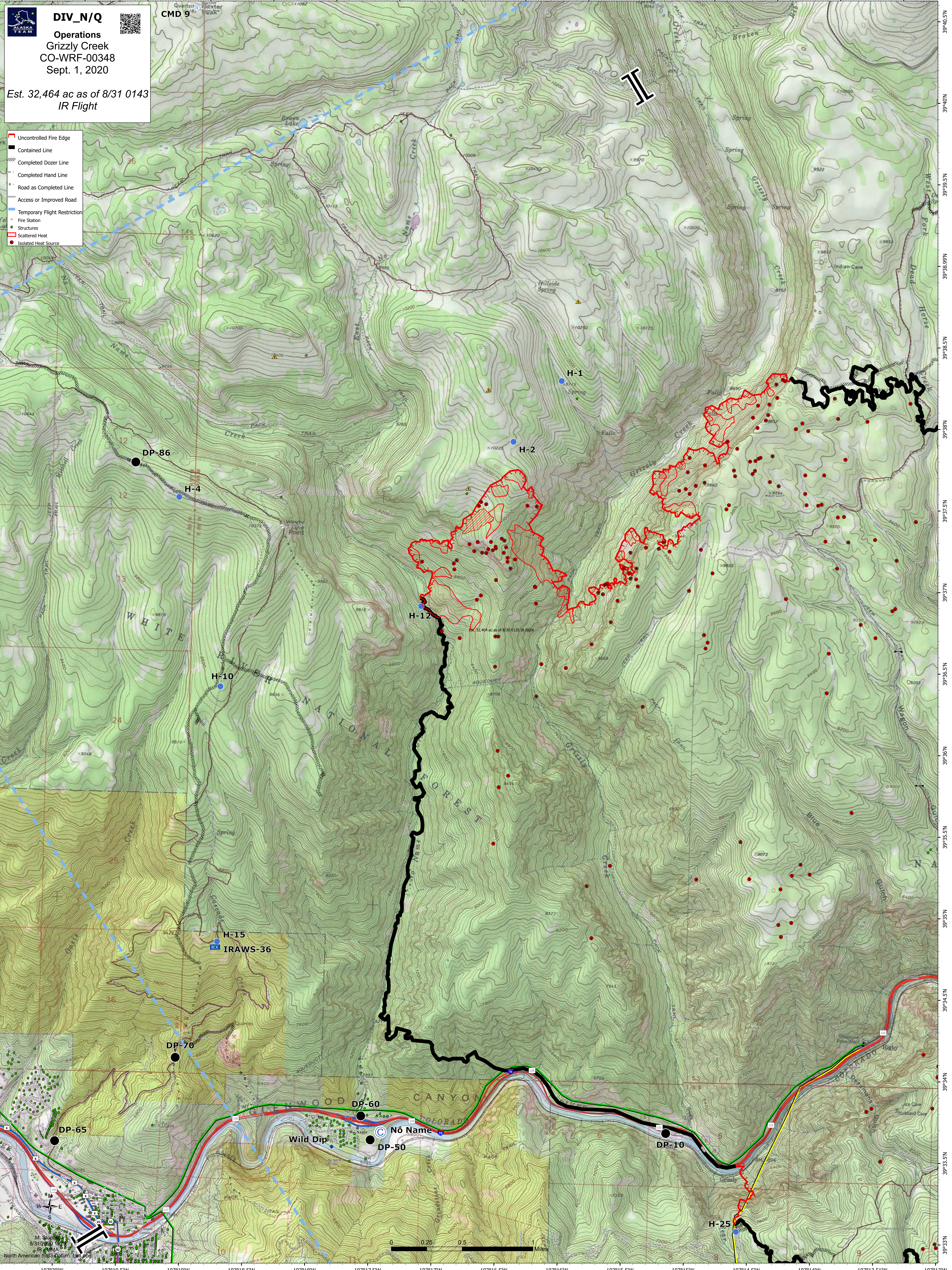
0 0.23 0.45 0.9 Miles

Copyright © 2013 National Geographic Society, Inc.

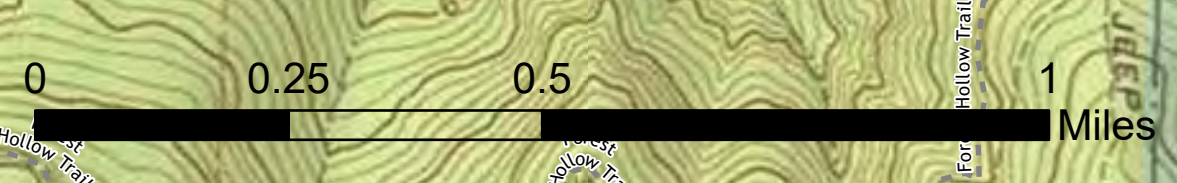
DIV_N/Q
Operations
Grizzly Creek
CO-WRF-00348
Sept. 1, 2020

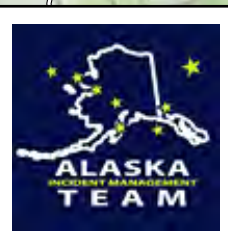
Est. 32,464 ac as of 8/31 0143
 IR Flight

- █ Uncontrolled Fire Edge
- Contained Line
- Completed Dozer Line
- Completed Hand Line
- Road as Completed Line
- Access or Improved Road
- Temporary Flight Restriction
- Fire Station
- Structures
- Scattered Heat
- Isolated Heat Source



M. Storch
 8/31/2020 16:25
 IR (WMA)
 North American 1983 datum, UTM Long





DIV_W/T

Operations
Grizzly Creek
CO-WRF-00348
Sept. 1, 2020



Est. 32,464 ac as of 8/31 0143
IR Flight

- Uncontrolled Fire Edge
- Completed Plow Line
- Contained Line
- Proposed Dozer Line
- - - Temporary Flight Restriction
- - - Completed Dozer Line
- Fire Station
- Completed Hand Line
- Structures
- Road as Completed Line
- Scattered Heat
- Access or Improved Road
- Isolated Heat Source

BRANCH III

DIV T / W

DIV X

DP-15

H-16

H-100

DP-45

Coffee Pot

H-90

DP-35

IRAWS 38

DP-34

DP-40

Dotsero Staging

DP-32

H-75

Beaver Dip

DP-30

Bair Ranch

H-72

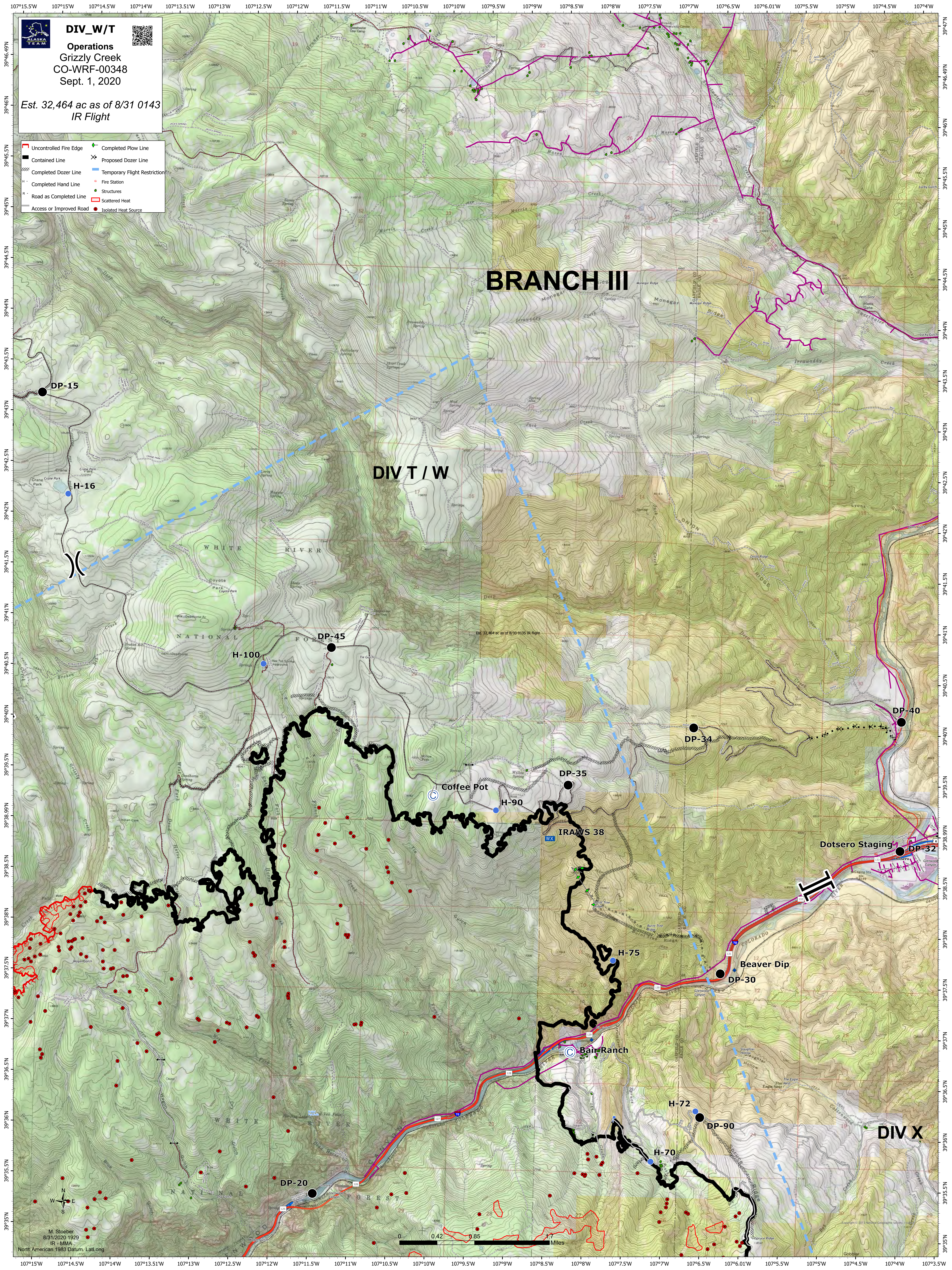
DP-90

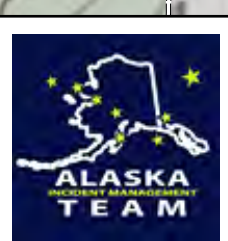
H-70

DP-20



M. Stoerber
8/31/2020 1929
IR - MMA
North American 1983 Datum, Lat/Long





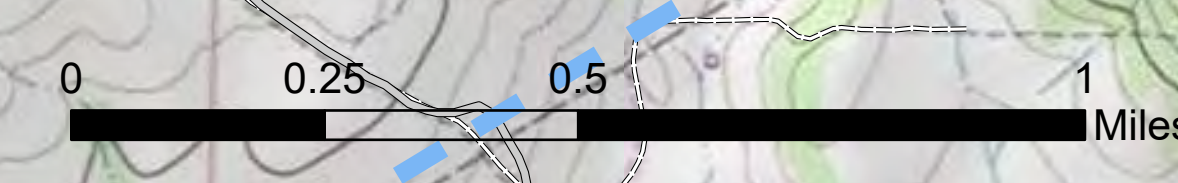
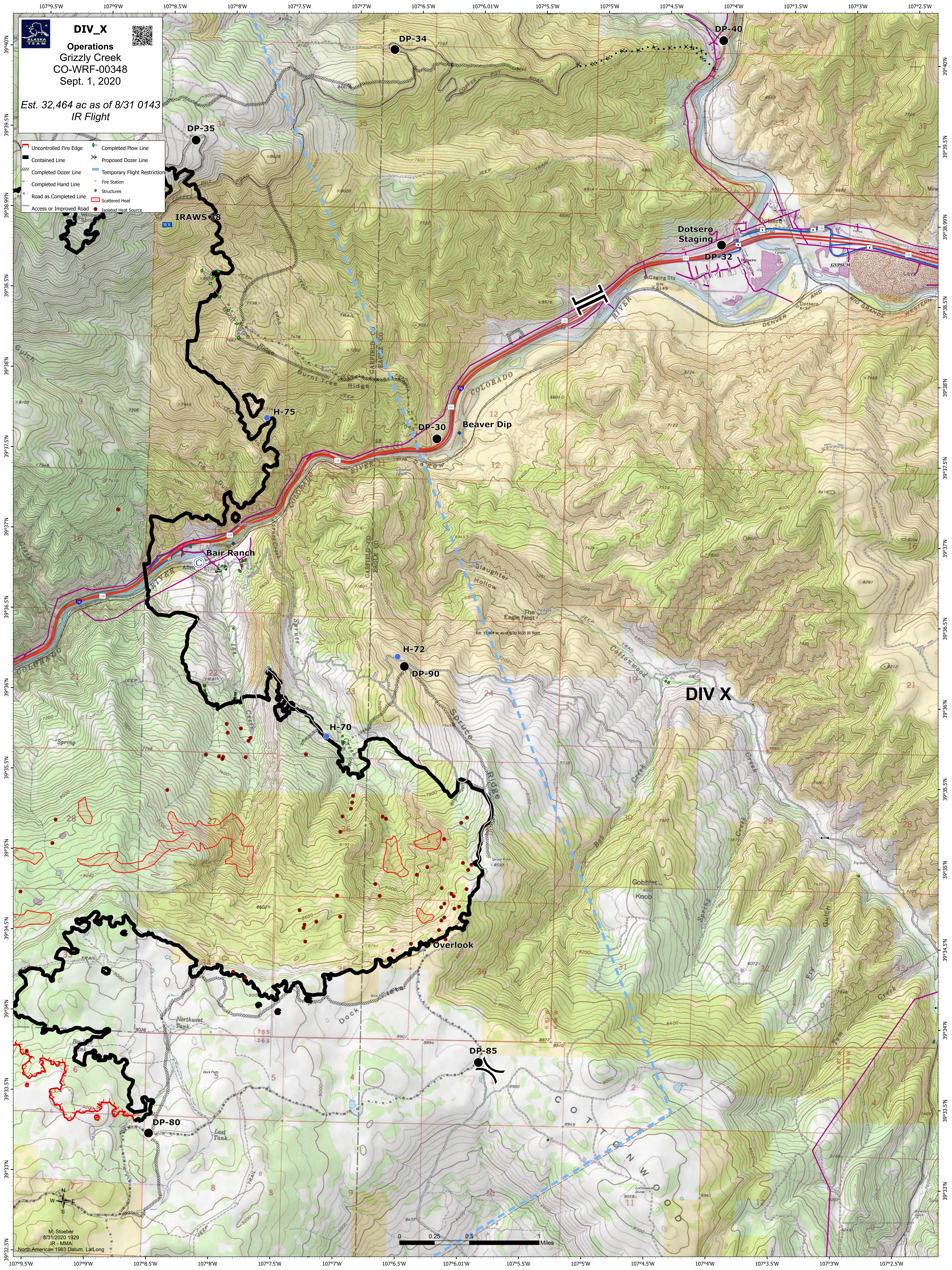
DIV_X

Operations
Grizzly Creek
CO-WRF-00348
Sept. 1, 2020

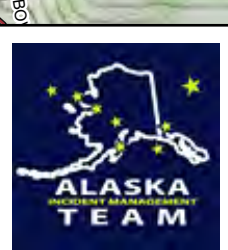


Est. 32,464 ac as of 8/31 0143
IR Flight

- Uncontrolled Fire Edge
- Contained Line
- Completed Dozer Line
- Completed Hand Line
- Road as Completed Line
- Access or Improved Road
- Completed Plow Line
- Proposed Dozer Line
- Temporary Flight Restriction
- Fire Station
- Structures
- Scattered Heat
- Isolated Heat Source



M. Stoerber
8/31/2020 1929
IR - MMA
North American 1983 Datum, Lat/Long



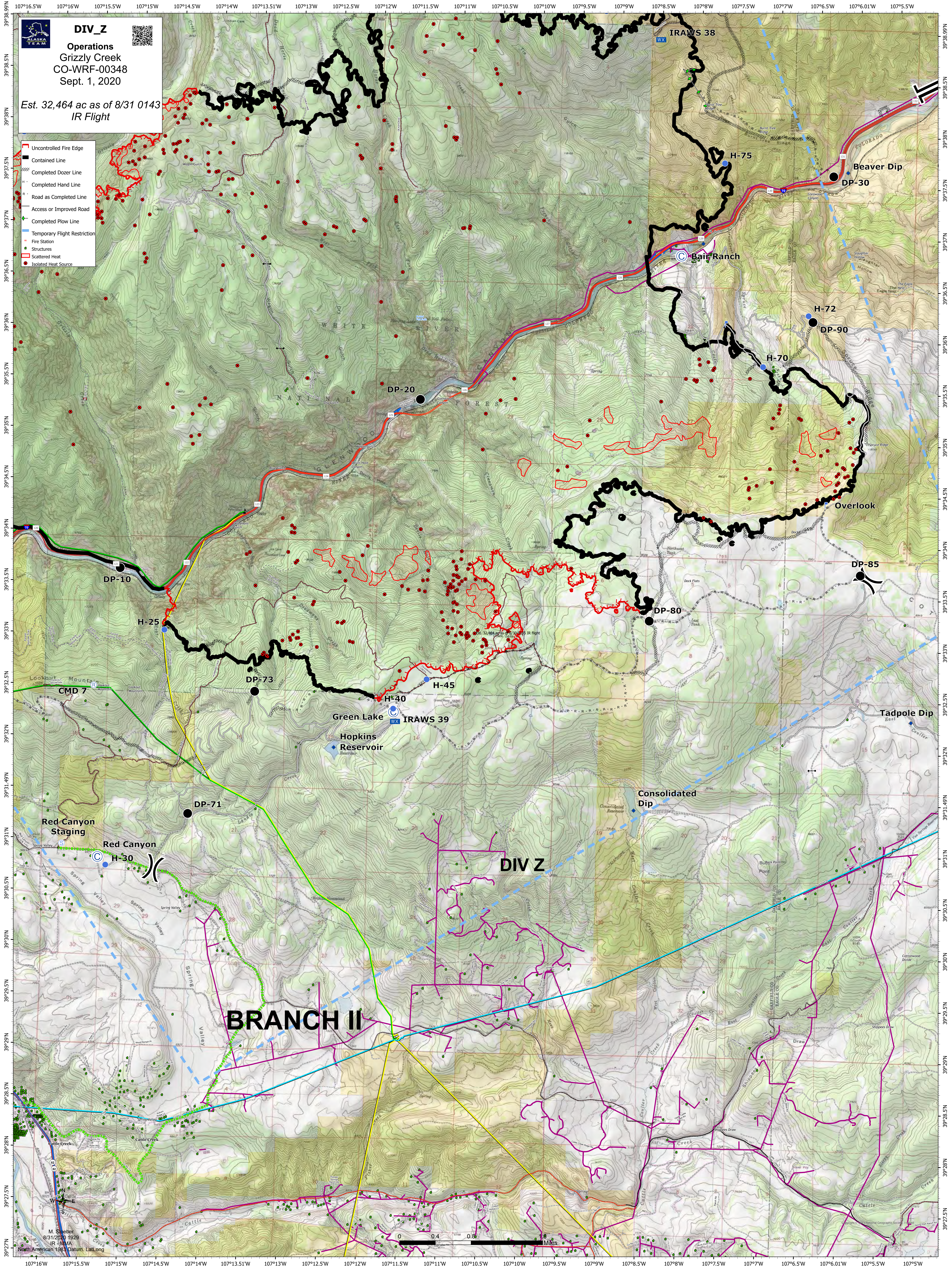
DIV_Z

Operations
Grizzly Creek
CO-WRF-00348
Sept. 1, 2020



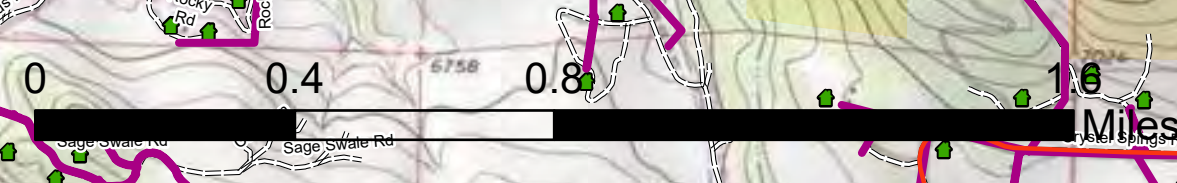
Est. 32,464 ac as of 8/31 0143
IR Flight

- Uncontrolled Fire Edge
- Contained Line
- Completed Dozer Line
- Completed Hand Line
- Road as Completed Line
- Access or Improved Road
- Completed Plow Line
- Temporary Flight Restriction
- Fire Station
- Structures
- Scattered Heat
- Isolated Heat Source



BRANCH II

DIV Z



M. Steeber
8/31/2020 1929
IR - MWA
North American 1983 Datum, LatLong