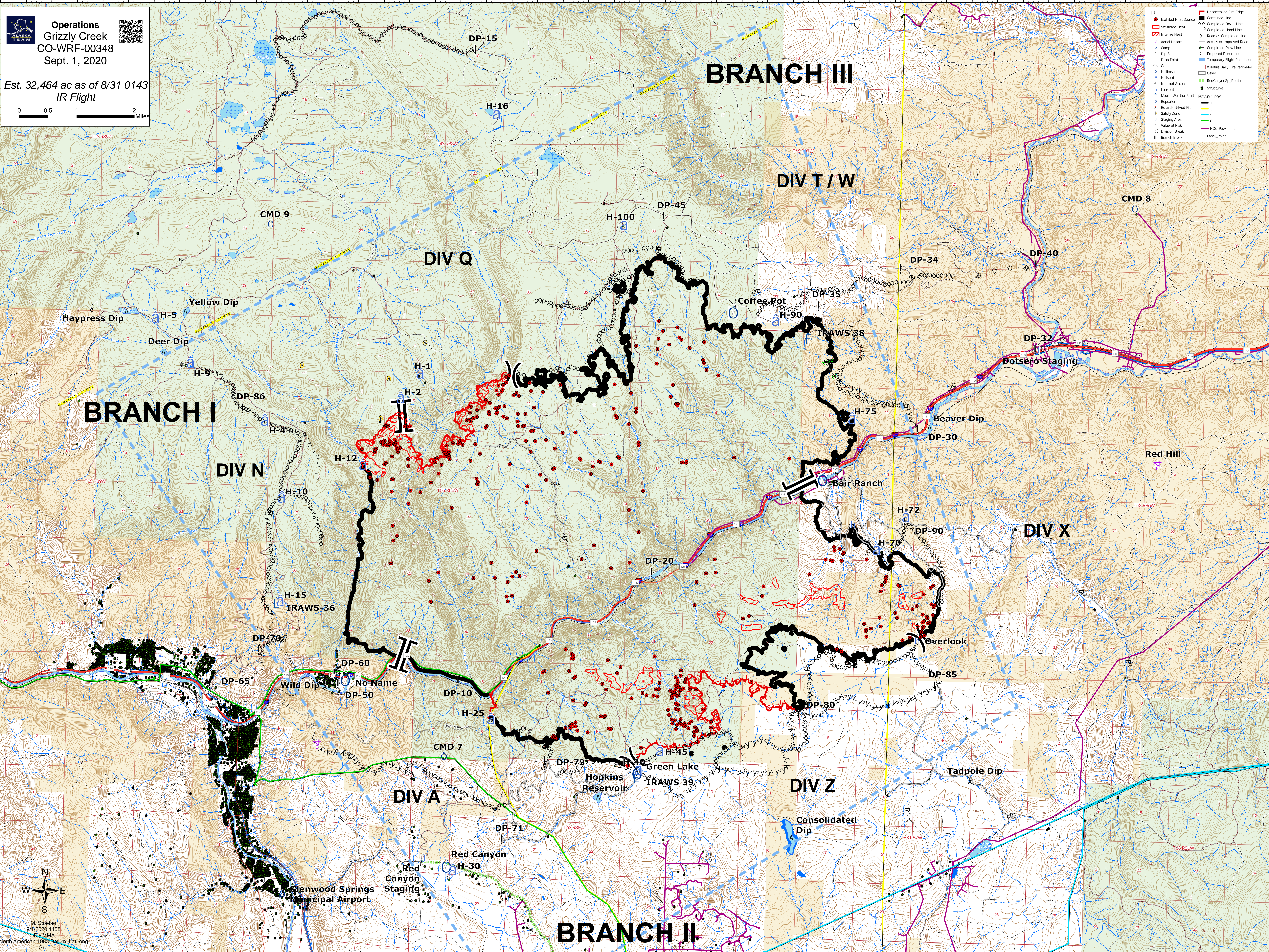


Operations
Grizzly Creek
CO-WRF-00348
 Sept. 1, 2020

Est. 32,464 ac as of 8/31 0143
 IR Flight



IR	Uncontrolled Fire Edge
●	Isolated Heat Source
○	Completed Down Line
○	Completed Heat Line
○	Completed Prow Line
○	Completed Dozer Line
○	Completed Plover Line
○	Temporary Flight Restriction
○	Wildfire Daily Fire Perimeter
○	Other
○	Red Canyon Sp. Route
○	Structures
○	Powerlines
○	3
○	5
○	8
○	HCE Powerlines
○	Label Point

M. Stoeber
 9/1/2020 1458
 IR - MMA
 North American 1983 Datum, Lat/Long Grid