

Operations Planning

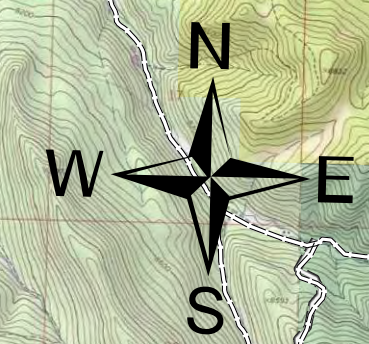
Grizzly Creek
CO-WRF-000348
Sept. 1, 2020

Est. 32,464 acres as of
8/31 0143 IR Flight

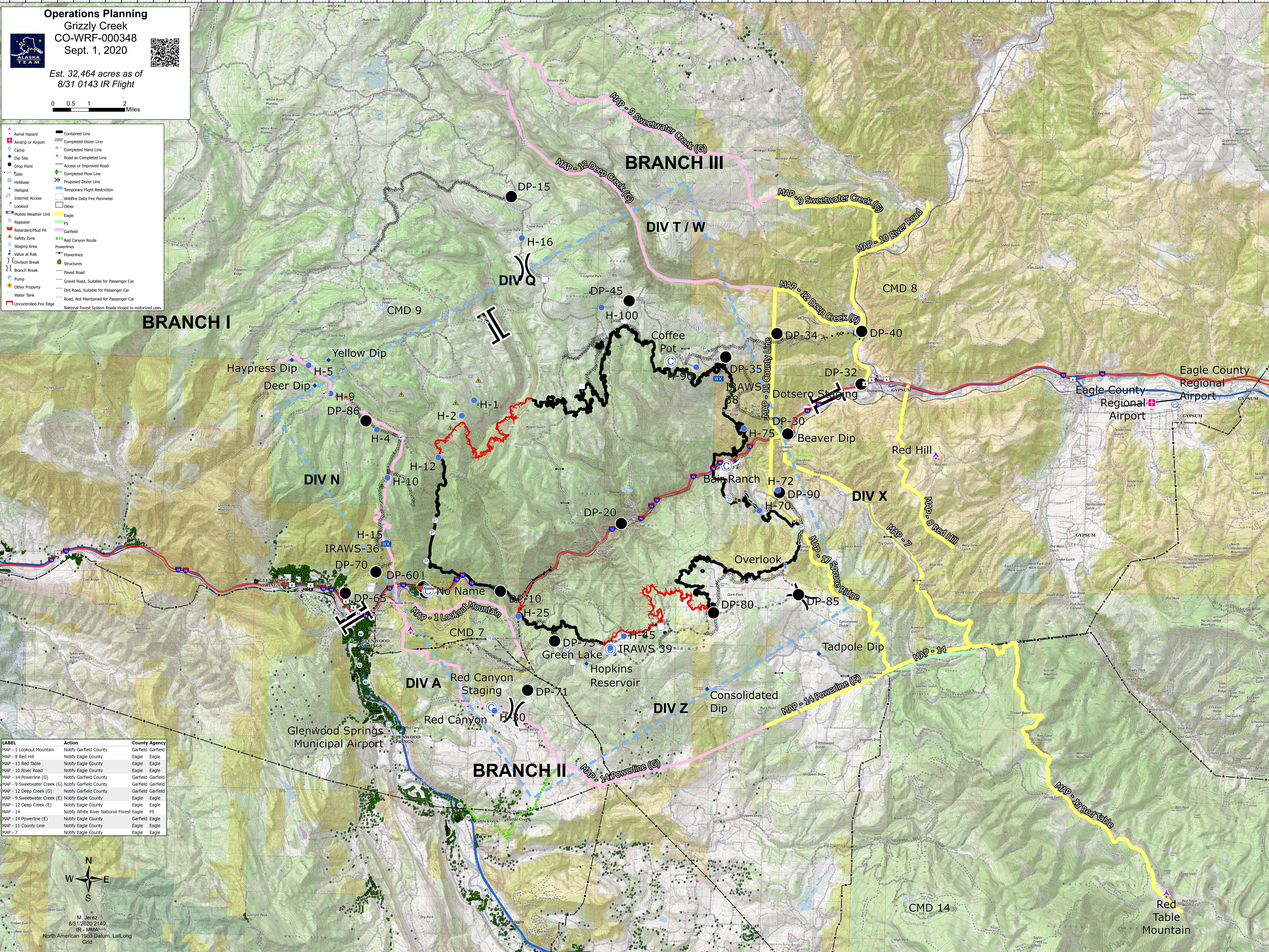


- Aerial Hazard
- Airstrip or Airport
- Camp
- Dip Site
- Drop Point
- Gate
- Helibase
- Helipoint
- Internet Access
- Lookout
- Mobile Weather Unit
- Repeater
- Retardant/Mud Pit
- Safety Zone
- Staging Area
- Value at Risk
- Division Break
- Branch Break
- Pump
- Other Property
- Water Tank
- Uncontrolled Fire Edge
- Contained Line
- Completed Dozer Line
- Completed Hand Line
- Road as Completed Line
- Access or Improved Road
- Completed Plow Line
- Proposed Dozer Line
- Temporary Flight Restriction
- Wildfire Daily Fire Perimeter
- Other
- FS
- Garfield
- Red Canyon Route
- Powerlines
- Powerlines
- Structures
- Paved Road
- Gravel Road, Suitable for Passenger Car
- Dirt Road, Suitable for Passenger Car
- Road, Not Maintained for Passenger Car
- National Forest System Roads closed to motorized uses

LABEL	Action	County Agency
MAP - 1 Lookout Mountain	Notify Garfield County	Garfield Garfield
MAP - 8 Red Hill	Notify Eagle County	Eagle Eagle
MAP - 13 Red Table	Notify Eagle County	Eagle Eagle
MAP - 10 River Road	Notify Eagle County	Eagle Eagle
MAP - 14 Powerline (G)	Notify Garfield County	Garfield Garfield
MAP - 9 Sweetwater Creek (G)	Notify Garfield County	Garfield Garfield
MAP - 12 Deep Creek (G)	Notify Garfield County	Garfield Garfield
MAP - 9 Sweetwater Creek (E)	Notify Eagle County	Eagle Eagle
MAP - 12 Deep Creek (E)	Notify Eagle County	Eagle Eagle
MAP - 14	Notify White River National Forest	Eagle FS
MAP - 14 Powerline (E)	Notify Eagle County	Garfield Eagle
MAP - 11 County Line	Notify Eagle County	Eagle Eagle
MAP - 7	Notify Eagle County	Eagle Eagle



M. Jerez
8/31/2020 1:49
IR - MMA
North American 1983 Datum, Lat/Long
Grid



39°46'N
39°44'N
39°42'N
39°40'N
39°38'N
39°36'N
39°34'N
39°32'N
39°30'N
39°28'N
39°26'N

107°30'W
107°28'W
107°26'W
107°24'W
107°22'W
107°20'W
107°18'W
107°16'W
107°14'W
107°12'W
107°10'W
107°8'W
107°6.01'W
107°4'W
107°2'W
107°W
106°58'W
106°56'W
106°54'W
106°52'W