



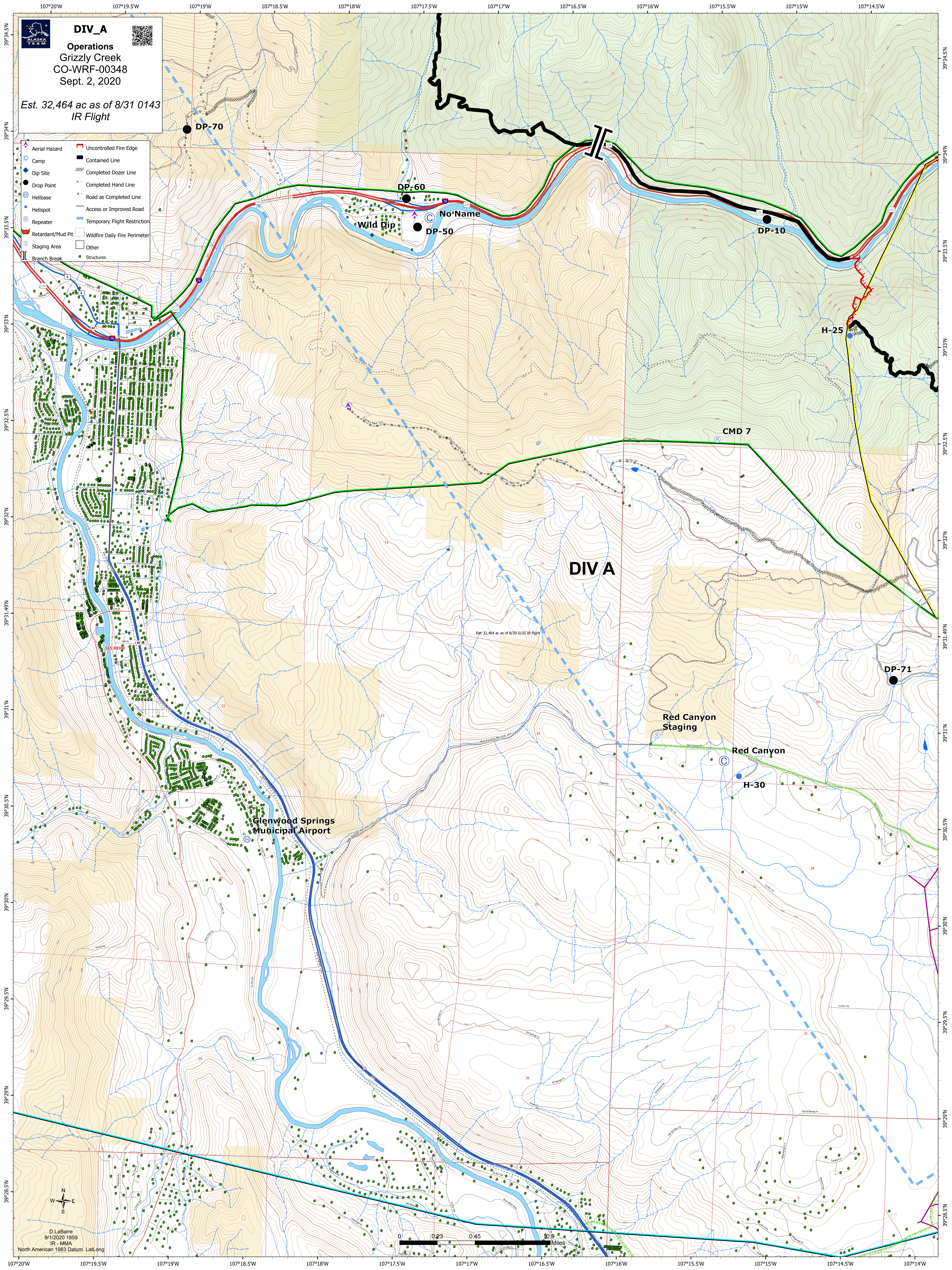
**DIV\_A**

**Operations**  
Grizzly Creek  
CO-WRF-00348  
Sept. 2, 2020



Est. 32,464 ac as of 8/31 0143  
IR Flight

- Aerial Hazard
- Camp
- Dip Site
- Drop Point
- Helibase
- Helispot
- Repeater
- Retardant/Mud Pit
- Staging Area
- Branch Break
- Uncontrolled Fire Edge
- Contained Line
- Completed Dozer Line
- Completed Hand Line
- Road as Completed Line
- Access or Improved Road
- Temporary Flight Restriction
- Wildfire Daily Fire Perimeter
- Other
- Structures



Est. 32,464 ac as of 8/30 0135 IR flight

D. LaBarre  
9/1/2020 1859  
IR - MMA  
North American 1983 Datum, Lat/Long

