



DIV_W/T

Operations
Grizzly Creek
CO-WRF-00348
Sept. 2, 2020



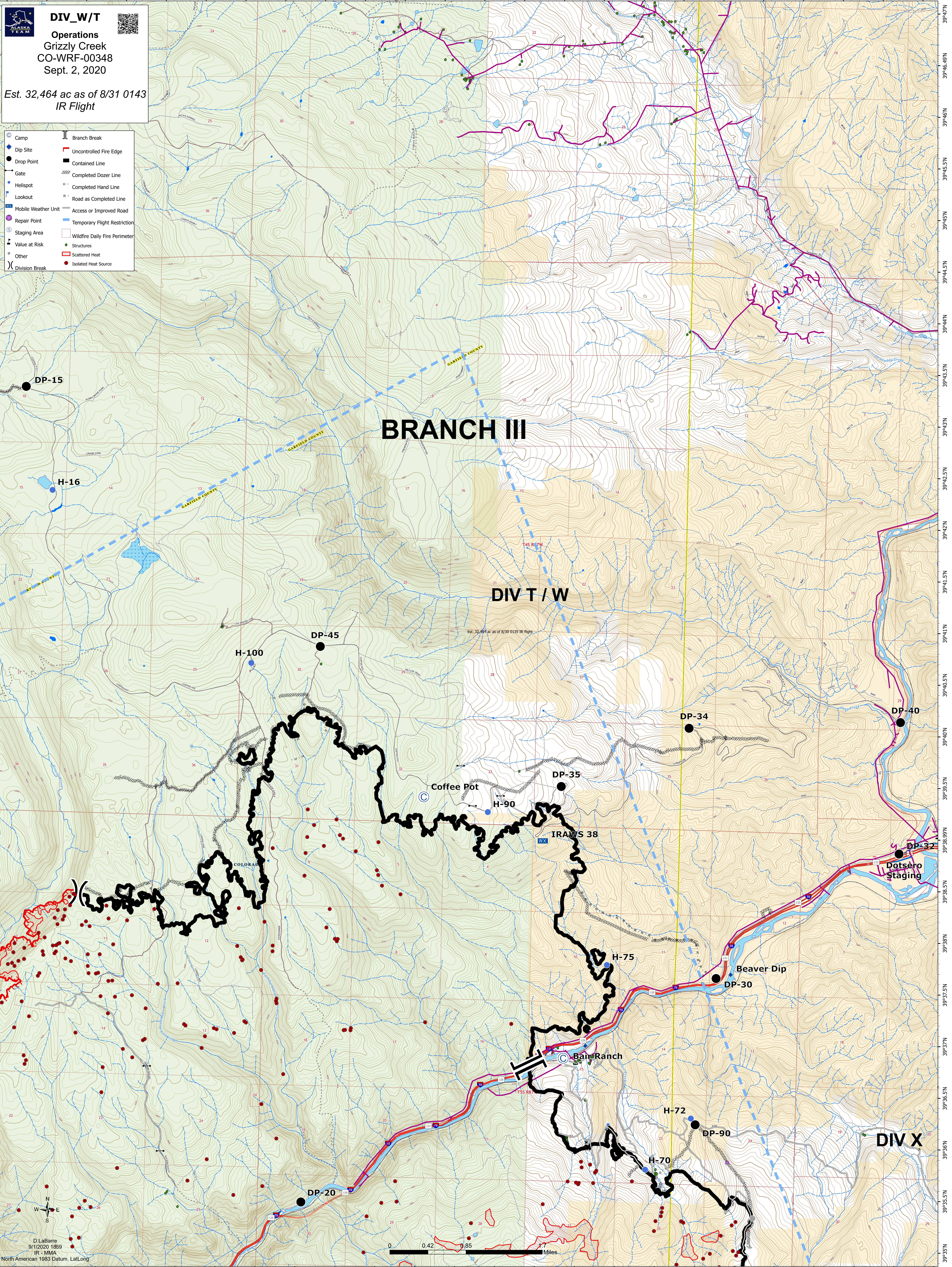
Est. 32,464 ac as of 8/31 0143
IR Flight

- | | |
|---------------------|-------------------------------|
| Camp | Branch Break |
| Dip Site | Uncontrolled Fire Edge |
| Drop Point | Contained Line |
| Gate | Completed Dozer Line |
| Helispot | Completed Hand Line |
| Lookout | Road as Completed Line |
| Mobile Weather Unit | Access or Improved Road |
| Repair Point | Temporary Flight Restriction |
| Staging Area | Wildfire Daily Fire Perimeter |
| Value at Risk | Structures |
| Other | Scattered Heat |
| Division Break | Isolated Heat Source |

BRANCH III

DIV T / W

DIV X



D. LaBarre
9/1/2020 1859
IR - MMA
North American 1983 Datum, Lat/Long