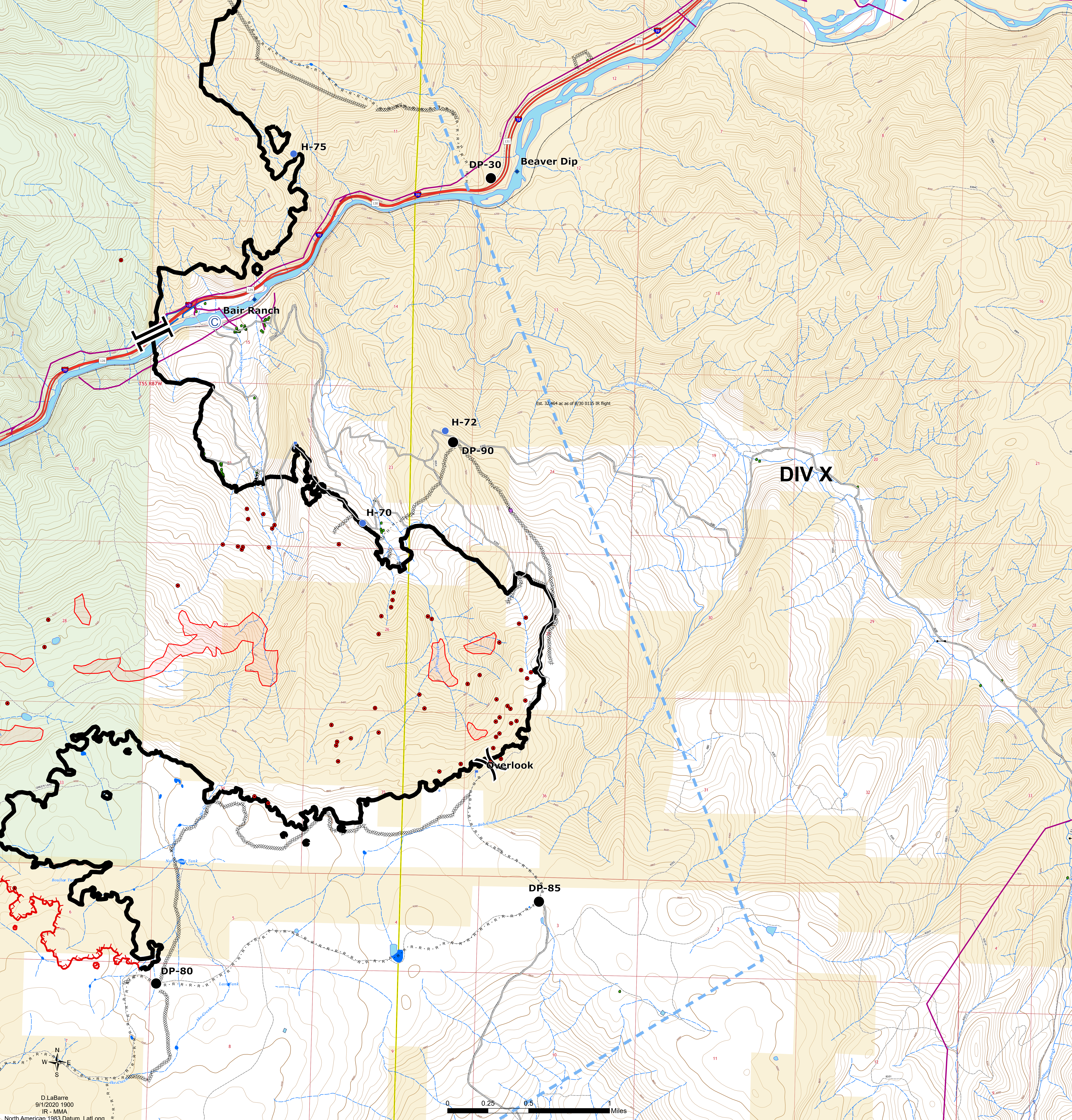


DIV_X
Operations
Grizzly Creek
CO-WRF-00348
Sept. 2, 2020

Est. 32,464 ac as of 8/31 0143
 IR Flight

- | | | | |
|--|---------------------|--|-------------------------------|
| | Camp | | Branch Break |
| | Dip Site | | Uncontrolled Fire Edge |
| | Drop Point | | Contained Line |
| | Helispot | | Completed Dozer Line |
| | Lookout | | Completed Hand Line |
| | Mobile Weather Unit | | Road as Completed Line |
| | Repair Point | | Access or Improved Road |
| | Staging Area | | Temporary Flight Restriction |
| | Value at Risk | | Wildfire Daily Fire Perimeter |
| | Other | | Scattered Heat |
| | Division Break | | Isolated Heat Source |



D.LaBarre
 9/1/2020 1900
 IR - MMA
 North American 1983 Datum, Lat/Long