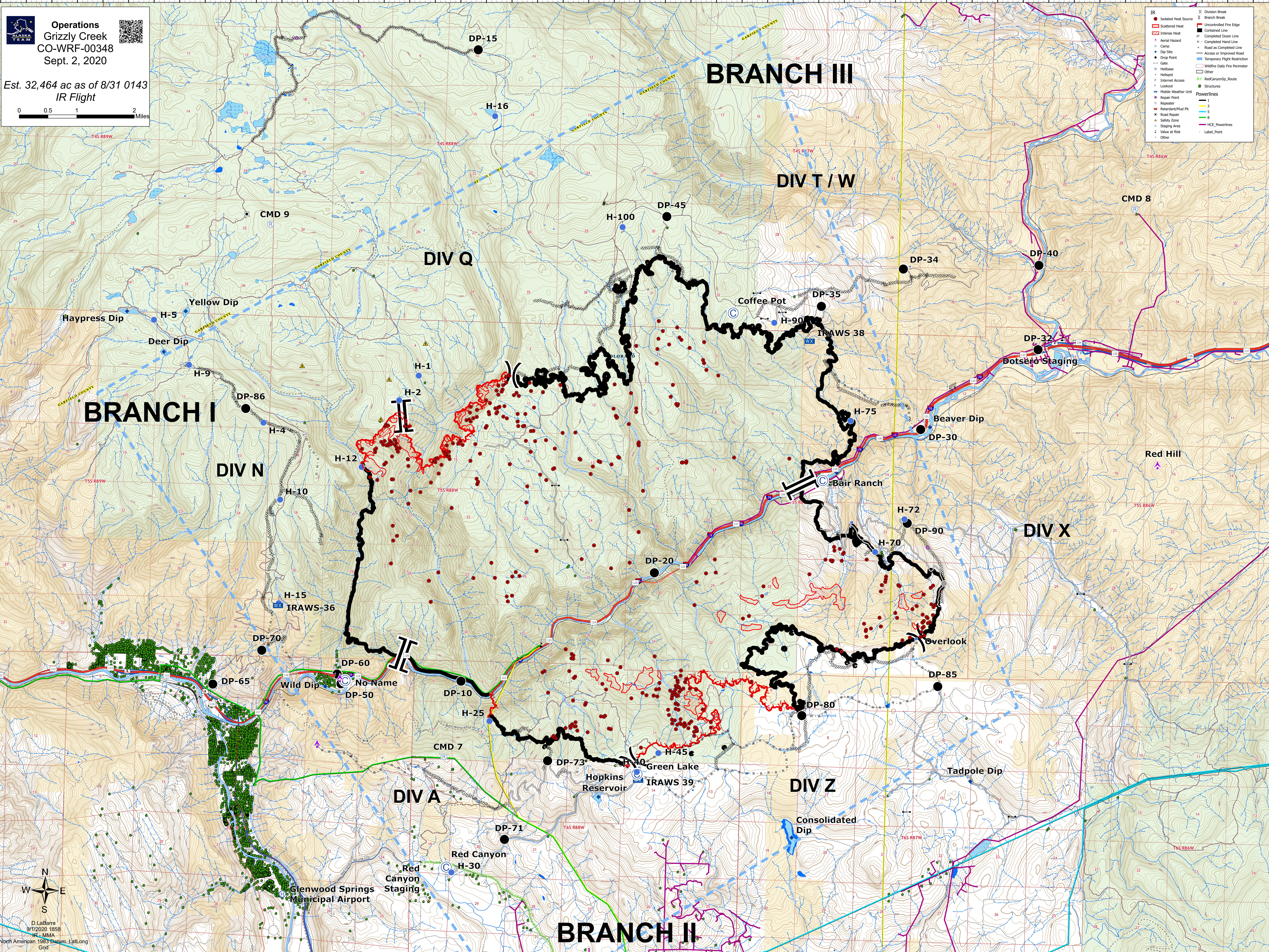


**Operations**  
**Grizzly Creek**  
**CO-WRF-00348**  
**Sept. 2, 2020**

Est. 32,464 ac as of 8/31 0143  
 IR Flight



- |                     |                      |                               |                               |
|---------------------|----------------------|-------------------------------|-------------------------------|
| IR                  | Isolated Heat Source | X                             | Division Break                |
| Scattered Heat      | Scattered Heat       | II                            | Branch Break                  |
| Intense Heat        | Intense Heat         | Uncontrolled Fire Edge        | Uncontrolled Fire Edge        |
| Aerial Hazard       | Aerial Hazard        | Completed Fire Line           | Completed Fire Line           |
| Camp                | Camp                 | Road as Completed Line        | Road as Completed Line        |
| Drop Site           | Drop Site            | Access or Improved Road       | Access or Improved Road       |
| Drop Point          | Drop Point           | Temporary Flight Restriction  | Temporary Flight Restriction  |
| Gate                | Gate                 | Wildfire Daily Fire Perimeter | Wildfire Daily Fire Perimeter |
| Helibase            | Helibase             | Other                         | Other                         |
| Helipad             | Helipad              | Red Canyon So. Route          | Red Canyon So. Route          |
| Internal Access     | Internal Access      | Structures                    | Structures                    |
| Lookout             | Lookout              | Powerlines                    | Powerlines                    |
| Mobile Weather Unit | Mobile Weather Unit  | 1                             | 1                             |
| Repair Point        | Repair Point         | 2                             | 2                             |
| Reservoir           | Reservoir            | 3                             | 3                             |
| Resturant/Mud Pit   | Resturant/Mud Pit    | 4                             | 4                             |
| Road Repair         | Road Repair          | 5                             | 5                             |
| Safety Zone         | Safety Zone          | 6                             | 6                             |
| Staging Area        | Staging Area         | NCE Powerlines                | NCE Powerlines                |
| Value at Risk       | Value at Risk        | Label_Pore                    | Label_Pore                    |
| Other               | Other                | Other                         | Other                         |

North Arrow

D. LaBare  
 9/1/2020 1858  
 IR - MMA  
 North American 1983 Datum, Lat/Long  
 Grid