
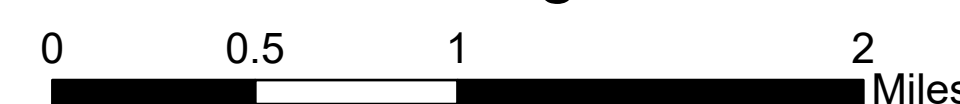


Recommended Organizational Structure
Grizzly Creek
 CO-WRF-00348
 Sept. 2, 2020



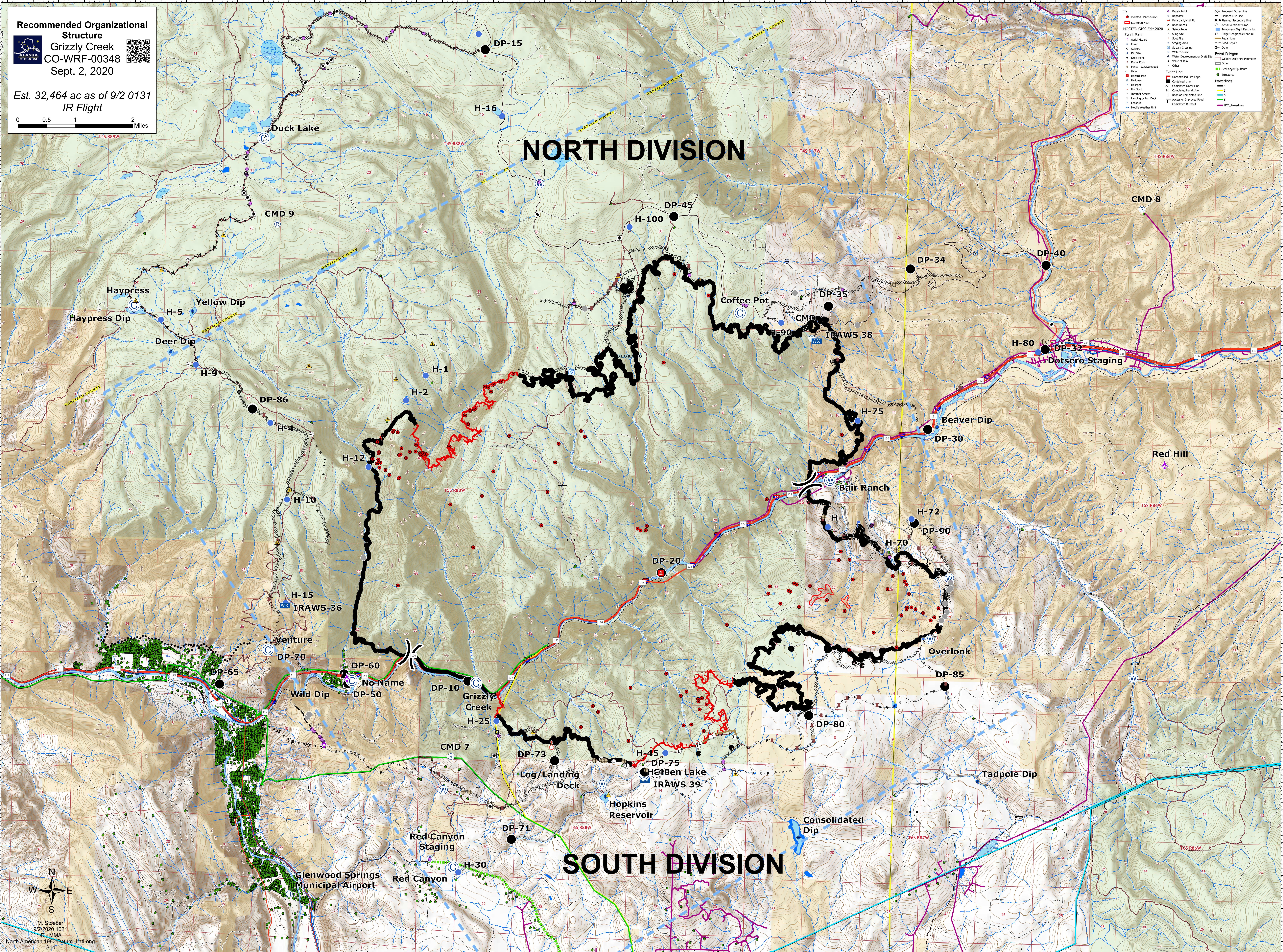
Est. 32,464 ac as of 9/2 0131
 IR Flight



IR	● Isolated Heat Source	● Repair Point	● Proposed Door Line
HOSTED GIS	● Superior Water	● Repaired Mud Pit	● Repaired Fire Line
Event Point	● Aerial Hazard	● Canoe	● Curlew
	● Dip Site	● Drop Point	● Door Push
	● Fences - Cut/Damaged	● Gate	● Hazard Tree
	● Helipad	● Helipoint	● Hot Spot
	● Inland Access	● Landing or Log Deck	● Load
	● Mobile Weather Unit		
		● Road Repair	● Slag Site
		● Staging Area	● Stream Crossing
		● Water Source	● Water Development or Draft Site
		● Value at Risk	● Value at Risk
		● Other	● Other
		● Structure	● Structure
		● Powerlines	● Powerlines
		● Access or Improved Road	● Access or Improved Road
		● Completed Burnout	● Completed Burnout

NORTH DIVISION

SOUTH DIVISION



M. Staeber
 9/2/2020 1621
 IR - MMA
 North American 1983 Datum, Lat/Long Grid