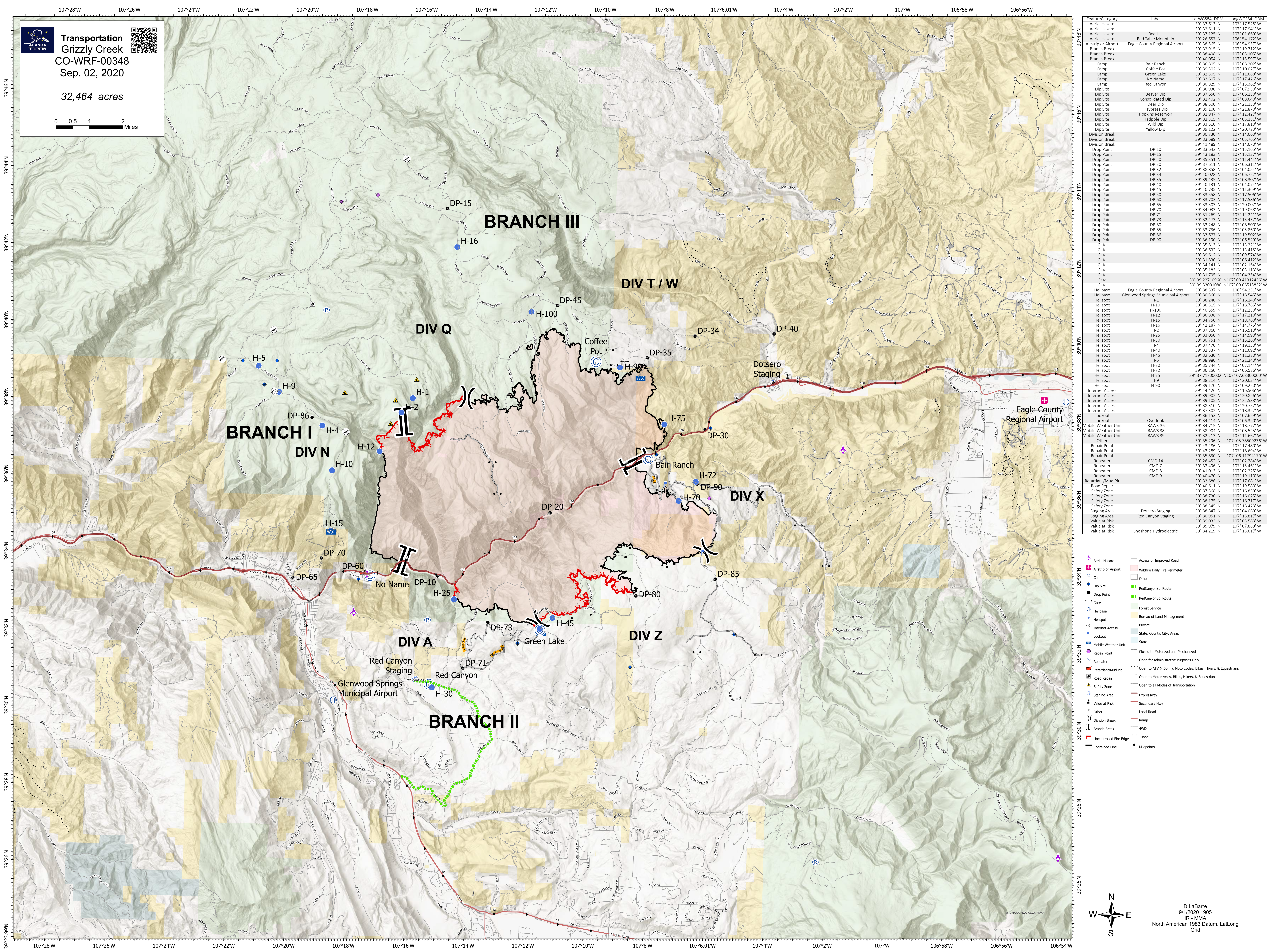


Transportation
Grizzly Creek
CO-WRF-00348
Sep. 02, 2020

32,464 acres



Feature/Category	Label	Lat/WGS84	DDM	Long/WGS84	DDM
Aerial Hazard		39° 33.613' N		107° 17.528' W	
Aerial Hazard		39° 33.611' N		107° 17.541' W	
Aerial Hazard	Red Hill	39° 37.125' N		107° 01.669' W	
Aerial Hazard	Red Table Mountain	39° 26.657' N		106° 54.172' W	
Airstrip or Airport	Eagle County Regional Airport	39° 38.565' N		106° 54.957' W	
Branch Break		39° 32.915' N		107° 19.712' W	
Branch Break		39° 38.498' N		107° 05.105' W	
Branch Break		39° 40.054' N		107° 15.597' W	
Camp	Bair Ranch	39° 39.805' N		107° 08.302' W	
Camp	Coffee Pot	39° 39.302' N		107° 10.027' W	
Camp	Green Lake	39° 32.305' N		107° 11.688' W	
Camp	No Name	39° 33.607' N		107° 17.426' W	
Camp	Red Canyon	39° 32.829' N		107° 15.362' W	
Dip Site		39° 36.930' N		107° 07.930' W	
Dip Site	Beaver Dip	39° 37.650' N		107° 06.130' W	
Dip Site	Consolidated Dip	39° 31.407' N		107° 08.640' W	
Dip Site	Deer Dip	39° 38.500' N		107° 21.130' W	
Dip Site	Haypress Dip	39° 39.100' N		107° 21.870' W	
Dip Site	Hopkins Reservoir	39° 31.947' N		107° 12.427' W	
Dip Site	Tedpole Dip	39° 32.315' N		107° 05.181' W	
Dip Site	Wild Dip	39° 33.510' N		107° 17.810' W	
Dip Site	Yellow Dip	39° 39.122' N		107° 20.723' W	
Division Break		39° 30.730' N		107° 14.660' W	
Division Break		39° 33.689' N		107° 05.765' W	
Division Break		39° 41.489' N		107° 14.670' W	
Drop Point	DP-10	39° 33.644' N		107° 15.165' W	
Drop Point	DP-15	39° 43.183' N		107° 15.137' W	
Drop Point	DP-20	39° 35.351' N		107° 11.444' W	
Drop Point	DP-30	39° 37.611' N		107° 06.311' W	
Drop Point	DP-32	39° 38.858' N		107° 10.436' W	
Drop Point	DP-34	39° 40.028' N		107° 06.722' W	
Drop Point	DP-35	39° 39.435' N		107° 08.307' W	
Drop Point	DP-40	39° 40.111' N		107° 04.714' W	
Drop Point	DP-45	39° 40.735' N		107° 11.369' W	
Drop Point	DP-50	39° 33.558' N		107° 17.506' W	
Drop Point	DP-60	39° 33.703' N		107° 17.586' W	
Drop Point	DP-65	39° 33.501' N		107° 20.007' W	
Drop Point	DP-70	39° 34.033' N		107° 19.068' W	
Drop Point	DP-71	39° 31.269' N		107° 14.241' W	
Drop Point	DP-72	39° 33.476' N		107° 13.837' W	
Drop Point	DP-73	39° 33.248' N		107° 08.500' W	
Drop Point	DP-75	39° 33.736' N		107° 05.860' W	
Drop Point	DP-80	39° 33.677' N		107° 18.560' W	
Drop Point	DP-85	39° 36.150' N		107° 06.529' W	
Drop Point	DP-90	39° 35.813' N		107° 13.221' W	
Gate		39° 36.633' N		107° 13.415' W	
Gate		39° 39.616' N		107° 09.574' W	
Gate		39° 31.830' N		107° 06.412' W	
Gate		39° 34.141' N		107° 02.164' W	
Gate		39° 35.183' N		107° 03.113' W	
Gate		39° 31.795' N		107° 04.354' W	
Gate		39° 39.22710960' N	107° 09.41312436' W		
Gate		39° 39.33003080' N	107° 09.06515832' W		
Helibase	Eagle County Regional Airport	39° 30.360' N		107° 18.545' W	
Helibase	Glenwood Springs Municipal Airport	39° 30.360' N		107° 18.545' W	
Helispot	H-1	39° 38.240' N		107° 16.140' W	
Helispot	H-10	39° 34.311' N		107° 18.753' W	
Helispot	H-100	39° 40.559' N		107° 12.230' W	
Helispot	H-12	39° 36.838' N		107° 17.210' W	
Helispot	H-15	39° 34.750' N		107° 18.760' W	
Helispot	H-16	39° 42.187' N		107° 14.775' W	
Helispot	H-2	39° 37.860' N		107° 16.510' W	
Helispot	H-25	39° 33.050' N		107° 14.590' W	
Helispot	H-30	39° 30.715' N		107° 15.260' W	
Helispot	H-4	39° 37.470' N		107° 19.150' W	
Helispot	H-40	39° 32.337' N		107° 11.692' W	
Helispot	H-45	39° 33.638' N		107° 11.380' W	
Helispot	H-5	39° 38.980' N		107° 21.340' W	
Helispot	H-70	39° 35.744' N		107° 07.144' W	
Helispot	H-72	39° 36.250' N		107° 06.586' W	
Helispot	H-75	39° 37.7000002' N	107° 07.68000000' W		
Helispot	H-9	39° 38.314' N		107° 20.634' W	
Helispot	H-90	39° 39.170' N		107° 09.220' W	
Internet Access		39° 34.421' N		107° 16.566' W	
Internet Access		39° 39.902' N		107° 20.826' W	
Internet Access		39° 39.105' N		107° 22.538' W	
Internet Access		39° 38.310' N		107° 20.757' W	
Internet Access		39° 37.300' N		107° 18.322' W	
Lookout		39° 36.153' N		107° 07.629' W	
Lookout	Overlook	39° 34.414' N		107° 06.320' W	
Mobile Weather Unit	IRAWS-36	39° 34.715' N		107° 18.777' W	
Mobile Weather Unit	IRAWS-38	39° 38.904' N		107° 08.525' W	
Mobile Weather Unit	IRAWS-39	39° 32.213' N		107° 11.667' W	
Other		39° 35.296' N		107° 05.78509236' W	
Repair Point		39° 43.486' N		107° 17.480' W	
Repair Point		39° 43.289' N		107° 18.694' W	
Repair Point		39° 35.830' N		107° 06.1194170' W	
Repeater		39° 26.457' N		107° 02.288' W	
Repeater	CMD 7	39° 32.496' N		107° 15.461' W	
Repeater	CMD 8	39° 41.013' N		107° 02.225' W	
Repeater	CMD 9	39° 40.470' N		107° 19.110' W	
Retardant/Mud Pit		39° 33.686' N		107° 17.681' W	
Road Repair		39° 40.611' N		107° 19.580' W	
Safety Zone		39° 37.568' N		107° 16.859' W	
Safety Zone		39° 38.730' N		107° 16.025' W	
Safety Zone		39° 38.175' N		107° 16.717' W	
Safety Zone		39° 38.345' N		107° 18.423' W	
Staging Area	Dotsero Staging	39° 38.847' N		107° 04.069' W	
Staging Area	Red Canyon Staging	39° 30.951' N		107° 15.817' W	
Value at Risk		39° 39.033' N		107° 03.583' W	
Value at Risk		39° 35.979' N		107° 07.889' W	
Value at Risk	Shoshone Hydroelectric	39° 34.219' N		107° 13.617' W	

- Aerial Hazard
- Airstrip or Airport
- Camp
- Dip Site
- Drop Point
- Gate
- Helibase
- Helispot
- Internet Access
- Lookout
- Mobile Weather Unit
- Repair Point
- Repeater
- Retardant/Mud Pit
- Road Repair
- Safety Zone
- Staging Area
- Value at Risk
- Uncontrolled Fire Edge
- Contained Line
- Access or Improved Road
- Wildfire Daily Fire Perimeter
- Other
- RedCanyonSp_Route
- RedCanyonSp_Route
- Forest Service
- Bureau of Land Management
- Private
- State, County, City, Areas
- State
- Closed to Motorized and Mechanized
- Open for Administrative Purposes Only
- Open to ATV (<50 in), Motorcycles, Bikes, Hikers, & Equestrians
- Open to Motorcycles, Bikes, Hikers, & Equestrians
- Open to all Modes of Transportation
- Expressway
- Secondary Hwy
- Local Road
- 4WD
- Tunnel
- Mileposts